

INTERVAL SHEET

Page 1 of 1

VDMR Well No: 2208

Date rec'd: 6/68

Sample Interval: from 0 to: 66

PROP: State road right-of-way

Number of samples: 13

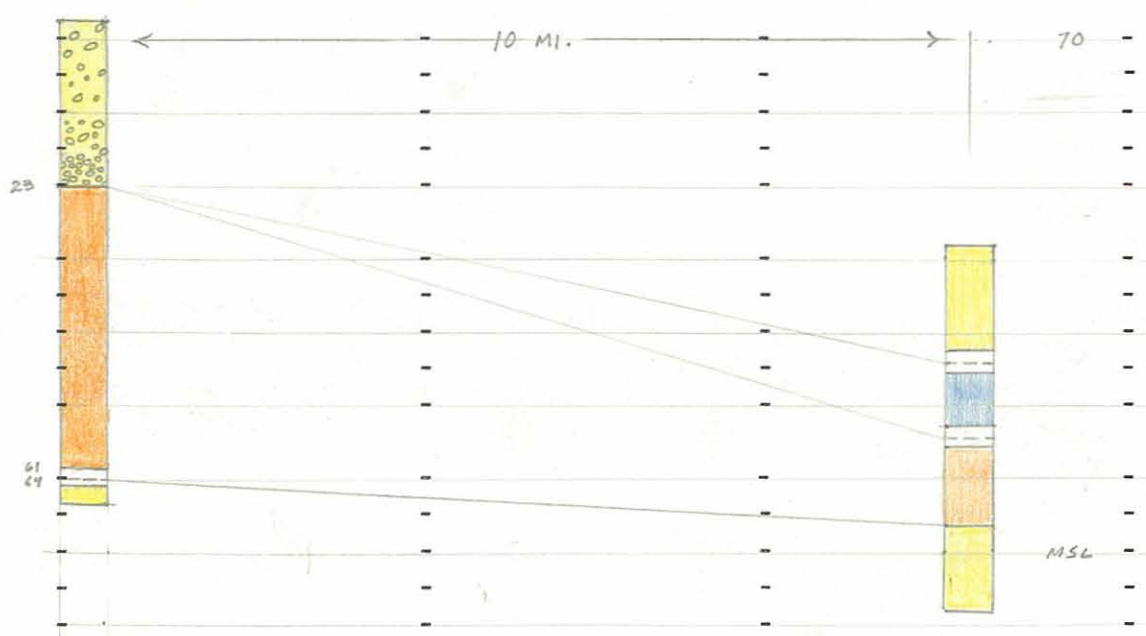
COMP: Froehling and Robertson

Total Depth: 66'

COUNTY: Southampton (Little Texas)  
Margarettesville Quad.

Oil or Gas: Water: Exploratory: X

	UNWASHED From-To	From-To	WASHED From-To	From-To
73' ↓	4 - 5	-	4 - 5	-
23'	9 - 10	-	9 - 10	-
	14 - 16	-	14 - 16	-
	19 - 21	-	19 - 21	-
23'	-	-	-	-
	24 - 26 core	-	24 - 26	-
	29 - 31 core	-	29 - 31	-
	34 - 36 core	-	34 - 36	-
28'	39 - 41 core	-	39 - 41	-
	-	-	-	-
	44 - 46	-	44 - 46	-
	49 - 51	-	49 - 51	-
	54 - 56	-	54 - 56	-
	59 - 61	-	59 - 61	-
2'	64 - 66	-	64 - 66	-





County : Southampton  
VOMR Well No. 2208

Well : LTX (Little Texas)  
Property : State road right-of-way  
Driller : Froehling and Robertson  
Location : in intersection of Rte. 653 and Rte. 730

Elevation : 73 feet

Total Depth : 66 feet

Started drilling : June 1968      Completed drilling : June 1968

Sample description by : R.H. Teifke, Virginia Division of  
Mineral Resources, November 12, 1968

### ~~GEOLOGIC SUMMARY~~

<del>Depth (feet)</del>	<del>Thickness (feet)</del>	<del>Formation (and remarks)</del>
<del>0-23</del>	<del>23</del>	<del>Columbia Group</del>
<del>23-61</del>	<del>38</del>	<del>Mataponi Formation</del>
<del>61-64</del>	<del>3</del>	<del>No sample.</del>
<del>64-66</del>	<del>2</del>	<del>Patuxent Formation</del>



County: Southampton

WDR Well No. 2208

GEOLOGIC LOG

Depth in feet

Description

COLUMBIA GROUP (~~2~~<sup>4</sup>-23')

0-4

No sample

4-5

Sand - light-gray to tan, clayey, a few small (7-10 mm) rounded pebbles; fine to very fine, very well-sorted; clear quartz with accessory muscovite

5-9

No sample

9-10

Sand and Gravel - tan, very slightly clayey; 20% granite gravel, and a few small pebbles up to 10 mm; 75% fine to very coarse, poorly sorted, angular to sub-angular sand; both fractions contain abundant dull-white decomposed feldspar

10-14

No sample

14-16

Sand and Gravel - pale-yellow, slightly clayey; 45% fine (2-10 mm), poorly rounded gravel; 50% fine to coarse, poorly sorted sand; both fractions contain abundant dull-white decomposed feldspar; trace of muscovite



16-19 No sample

19-21 Gravel — clean; fine (2-8 mm), well-sorted, angular to rounded; quartz, dull-white decomposed feldspar, and subordinate quartzite and chert fragments

21-24 No sample; contact at 23' as determined by drilling characteristics

### MATTAPONI FORMATION (23 - 61')

24-26 Clay — greenish-gray, very sandy; sand is very fine to fine grained, very well-sorted, angular; clean to pale-green quartz, with 5% glauconite and trace of muscovite; a few plant fragments

26-29 No sample

29-31 Sand — greenish-gray, slightly clayey; fine, well-sorted, angular to subangular; clean quartz, with 5% glauconite, and traces of muscovite, magnetite, and garnet

31-34 No sample.

34-36 Sand — greenish-gray, slightly clayey; medium, fairly well-sorted, subangular; clean quartz, with 5% fragmental phosphite, minor glauconite, and trace of garnet; a few plant fragments

36-39 No sample



38-41

Sand - greenish-gray, slightly clayey; fine to medium, well-sorted, subangular; clear and pale-green quartz, with minor amounts of phosphorite, magnetite, and glauconite

41-44

No sample

44-46

Sand - grayish-green, very slightly clayey; fine to medium, well-sorted, angular to subangular; clear and pale green quartz, with minor amounts of glauconite and fragmental phosphorite

46-49

No sample

49-51

Sand - grayish-green, very slightly clayey; fine, very well-sorted, angular; clear and pale-green quartz, with 5% combined glauconite and fragmental phosphorite; traces of coarse garnet and feldspar

51-54

No sample

54-56

Sand - grayish-green, very slightly clayey, 15% ~~MMM~~ coarse sand and granule gravel and a few small pebbles up to 10 mm; fine, well-sorted, angular; clear and pale-green quartz, with 5% combined glauconite and fragmental phosphorite; coarse fraction contains some feldspar, phosphorite nodules, fish teeth, and garnet



56-59 No sample

59-61 Sand and Gravel - grayish-green, very slightly clayey; <sup>73%</sup>~~75%~~ fine to very coarse, poorly sorted, angular to subangular sand; 25% fine (2-12 mm), fairly well-sorted, subangular to rounded gravel; sand is slightly to moderately glauconitic in fine grades, slightly feldspathic (glauconite-pigmented feldspar fragments) in coarse grades; gravel consists of quartz, feldspar, and abundant rounded and polished phosphorite nodules; garnet common; trace of pyrite

61-64 No sample; contact at 63', according to <sup>Drilling</sup> ~~field notes~~ characteristics

PATUXENT FORMATION (63'-66')

64-66 Sand - tan, slightly silty and clayey, 5% granule gravel; medium to very coarse, moderately sorted, angular to subrounded; feldspathic; accessory garnet and muscovite

GEOLOGIC SUMMARY

	<u>Rock Unit</u>	<u>Age</u>
0-4	No sample	—
4-23	Columbia Group	Pleistocene
23-61	Mataponi Formation	Paleocene
61-64	No sample	—
64-66	Patuxent Formation	Early Cretaceous