

Operator: Wilshire Oil Company of Texas
 Farm: J. V. Graham
 Well No.: 3
 Location: Lee County
 7150' S of 36°45')
 3500' E of 83°05') approximate
 Elevation: 1710 Gr.
 Total Depth: 2725'
 Drilling Commenced: May 26, 1967
 Drilling Completed: June 19, 1967
 Result: Operations temporarily suspended on June 19, 1967.

DRILLERS LOG

<u>Formation</u>	<u>Top (feet)</u>	<u>Bottom (feet)</u>
Limestone, grey, hard	0	400
Dolomite & limestone, gray soft	400	600
Sandstone, grey, hard	600	640
Shale, red, soft	640	990
Sandstone, white, hard	990	1140
Shale, grey, soft	1140	1270
Shale, red, soft	1220	1400
Limestone, grey, hard	1400	1700
Shale & limestone, grey, hard	1700	1860
Shale, grey, soft	1860	2106
Limestone, grey, hard	2106	2734

Remarks: Fresh water - none
 Well acidized from 2095-2725 with 3000 gal. of 28% acid.
 No shows of oil or gas after acidization.
 Drilled in after setting 7" @2108' using salt water
 and reverse circulation.

Operator: Wilshire Oil Company of Texas

Farm: James V. Graham

Well No.: 3

Location: Lee County

7150' S. of 36°45'

3500' E. of 83°05'

} approximate

Elevation:

Total Depth: 2734'

Drilling Commenced: 1967

Drilling Completed: 1967

Result:

Remarks: Well drilled with rotary rig.

June 1, 1967

- Drilling at 563'

June 15, 1967

- Running logs in Trenton (?).

Will acidize 6/16. Lost circulation
in Trenton.

August 3, 1967

- Standing. Rig removed, may frac.
the well.

Top of Trenton reported at 2106'. No oil shows reported.

VDMR Well No.: W-2057

Operator: Wilshire Oil Company of Texas
 Farm: J. V. Graham
 Well No.: 3
 Location: Lee County
 7150' S of 36°45')
 3500' E of 83°05') approximate
 Elevation: 1710 Gr.
 Total Depth: 2725'
 Drilling Commenced: May 26, 1967
 Drilling Completed: June 19, 1967
 Result: Operations temporarily suspended on June 19, 1967.

DRILLERS LOG

<u>Formation</u>	<u>Top (feet)</u>	<u>Bottom (feet)</u>
Limestone, grey, hard	0	400
Dolomite & limestone, gray soft	400	600
Sandstone, grey, hard	600	640
Shale, red, soft	640	990
Sandstone, white, hard	990	1140
Shale, grey, soft	1140	1270
Shale, red, soft	1220	1400
Limestone, grey, hard	1400	1700
Shale & limestone, grey, hard	1700	1860
Shale, grey, soft	1860	2106
Limestone, grey, hard	2106	2734

Remarks: Fresh water - none
 Well acidized from 2095-2725 with 3000 gal. of 28% acid.
 No shows of oil or gas after acidization.
 Drilled in after setting 7" @2108' using salt water
 and reverse circulation.

Operator: Wilshire Oil Company of Texas

Farm: James V. Graham

Well No.: 3

Location: Lee County

7150' S. of 36°45'

3500' E. of 83°05'

} approximate

Elevation:

Total Depth: 2734'

Drilling Commenced: 1967

Drilling Completed: 1967

Result:

Remarks: Well drilled with rotary rig.

June 1, 1967

- Drilling at 563'

June 15, 1967

- Running logs in Trenton (?).

Will acidize 6/16. Lost circulation
in Trenton.

August 3, 1967

- Standing. Rig removed, may frac.
the well.

Top of Trenton reported at 2106'. No oil shows reported.

(Well in hollow)

INTERVAL SHEET

Page 1 of 3

VDMR Well No: 2057

Date rec'd: 12/4/67

Sample Interval: from 50' to: 2725'

PROP: J. V. Graham Well #3

Number of samples: 275

COMP: Wilshire Oil Co. of Texas

Total Depth: 2734'

COUNTY: Lee

Oil or Gas: XWater: Exploratory:

From-To	From-To	From-To	From-To
no samples	340 - 350	640 - 650	940 - 950
50 - 60	350 - 360	650 - 660	950 - 960
60 - 70	360 - 370	660 - 670	960 - 970
70 - 80	370 - 380	670 - 680	970 - 980
80 - 90	380 - 390	680 - 690	980 - 990
90 - 100	390 - 400	690 - 700	990 - 1000
100 - 110	400 - 410	700 - 710	1000 - 1010
110 - 120	410 - 420	710 - 720	1010 - 1020
120 - 130	420 - 430	720 - 730	1020 - 1030
130 - 140	430 - 440	-	1030 - 1040
140 - 150	440 - 450	-	1040 - 1050
150 - 160	450 - 460	750 - 760	1050 - 1060
160 - 170	460 - 470	760 - 770	1060 - 1070
170 - 180	470 - 480	770 - 780	1070 - 1080
180 - 190	480 - 490	780 - 790	1080 - 1090
190 - 200	490 - 500	790 - 800	1090 - 1100
200 - 210	500 - 510	800 - 810	1100 - 1110
210 - 220	510 - 520	810 - 820	1110 - 1120
220 - 230	520 - 530	820 - 830	1120 - 1130
230 - 240	530 - 540	830 - 840	1130 - 1140
240 - 250	540 - 550	840 - 850	1140 - 1150
250 - 260	550 - 560	850 - 860	1150 - 1160
260 - 270	560 - 570	860 - 870	1160 - 1170
270 - 280	570 - 580	870 - 880	1170 - 1180
280 - 290	580 - 590	880 - 890	1180 - 1190
290 - 300	590 - 600	890 - 900	1190 - 1200
300 - 310	600 - 610	900 - 910	1200 - 1210
310 - 320	610 - 620	910 - 920	1210 - 1220
320 - 330	620 - 630	920 - 930	1220 - 1230
330 - 340	630 - 640	930 - 940	1230 - 1240

All intervals have both washed and unwashed samples

INTERVAL SHEET

Page 2 of 3

VDMR Well No: 2057

Date rec'd: 12/4/67

Sample Interval: from 50' to: 2725'

PROP: J. V. Graham Well #3

Number of samples: 275

COMP: Wilshire Oil Co. of Texas

Total Depth: 2734'

COUNTY: Lee

Oil or Gas~~X~~ Water: Exploratory:

From-To	From-To	From-To	From-To
1240 - 1250	1540 - 1550	1840 - 1850	2090 - 2095
1250 - 1260	1550 - 1560	1850 - 1860	2095 - 2100
1260 - 1270	1560 - 1570	1860 - 1870	2100 - 2105
1270 - 1280	1570 - 1580	1870 - 1880	2105 - 2108
1280 - 1290	1580 - 1590	1880 - 1890	2108 - 2108
1290 - 1300	-	1890 - 1900	2108 - 2108
1300 - 1310	1600 - 1610	1900 - 1910	2108 - 2108
1310 - 1320	1610 - 1620	1910 - 1920	2108 - 2110
1320 - 1330	1620 - 1630	1920 - 1930	2110 - 2120
1330 - 1340	1630 - 1640	1930 - 1940	2120 - 2130
1340 - 1350	1640 - 1650	1940 - 1950	2130 - 2140
1350 - 1360	1650 - 1660	1950 - 1960	2140 - 2150
1360 - 1370	1660 - 1670	1960 - 1970	2150 - 2160
1370 - 1380	1670 - 1680	1970 - 1980	2160 - 2170
1380 - 1390	1680 - 1690	1980 - 1990	2170 - 2180
1390 - 1400	1690 - 1700	1900 - 2000	2180 - 2190
1400 - 1410	1700 - 1710	2000 - 2010	2190 - 2200
1410 - 1420	1710 - 1720	2010 - 2020	2200 - 2210
1420 - 1430	1720 - 1730	2020 - 2030	2210 - 2220
1430 - 1440	1730 - 1740	2030 - 2040	2220 - 2230
1440 - 1450	1740 - 1750	2040 - 2045	2230 - 2240
1450 - 1460	1750 - 1760	2045 - 2050	2240 - 2250
-	1760 - 1770	2050 - 2055	2250 - 2260
1470 - 1480	1770 - 1780	2050 - 2060	2260 - 2270
1480 - 1490	1780 - 1790	2060 - 2065	2270 - 2280
1490 - 1500	1790 - 1800	2065 - 2070	2280 - 2290
1500 - 1510	1800 - 1810	2070 - 2075	2290 - 2300
1510 - 1520	1810 - 1820	2075 - 2080	2300 - 2310
1520 - 1530	1820 - 1830	2080 - 2085	2310 - 2320
1530 - 1540	1830 - 1840	2085 - 2090	2320 - 2330

All intervals have both washed and unwashed samples

INTERVAL SHEET

Page 3 of 3

VDMR Well No: 2057

Date rec'd: 12/4/67

Sample Interval: from 50' to: 2725'

PROP: J. V. Graham Well #3

Number of samples: 275

COMP: Wilshire Oil Co. of Texas

Total Depth: 2734'

COUNTY: Lee

Oil or Gas: X Water: Exploratory:

From-To	From-To	From-To	From-To
2330 - 2340	2630 - 2640	-	-
2340 - 2350	2640 - 2650	-	-
2350 - 2360	2650 - 2660	-	-
2360 - 2370	2660 - 2670	-	-
2370 - 2380	2670 - 2680	-	-
2380 - 2390	2680 - 2690	-	-
2390 - 2400	2690 - 2700	-	-
2400 - 2410	2700 - 2710	-	-
2410 - 2420	2710 - 2720	-	-
2420 - 2430	2720 - 2725	-	-
2430 - 2440	-	-	-
2440 - 2450	-	-	-
2450 - 2460	-	-	-
2460 - 2470	-	-	-
2470 - 2480	-	-	-
2480 - 2490	-	-	-
2490 - 2500	-	-	-
2500 - 2510	-	-	-
2510 - 2520	-	-	-
2520 - 2530	-	-	-
2530 - 2540	-	-	-
2540 - 2550	-	-	-
2550 - 2560	-	-	-
2560 - 2570	-	-	-
2570 - 2580	-	-	-
2580 - 2590	-	-	-
2590 - 2600	-	-	-
2600 - 2610	-	-	-
2610 - 2620	-	-	-
2620 - 2630	-	-	-

All intervals have both washed and unwashed samples

OIL AND GAS WELL
SUMMARY REPORT

API No. 45-105-20018-00-03 VDMR Well Rep. No. W-2057
DMQ File No. LE-31

Operator WILSHIRE OIL COMPANY OF TEXAS
Farm JAY V. GRAHAM
Co. Well No. # 3

County LEE Quadrangle BEN HUR - 7-1/2'
Location (UTM) N 4,066,750; E 315,030 UTM Zone 17
(Lat. and Long.)

Field _____ Province VALLEY AND RIDGE

Elev. (specify) 1710' GR. TD 2725' Form. at TD TRENTON
INITIAL FLOW - Age ORDOVICIAN

Date compl. or abandoned OPERATIONS TEMPORARILY SUSPENDED ON 6-19-67.

Result _____

Gas Shows _____

Gas Pays _____

Main Production _____ Prod. Form. _____
Age _____

Treatment: WELL ACIDIZED FROM 2095' to 2725' WITH 3,000 GALLONS OF 28% ACID. NO SHOWS OF OIL OR GAS AFTER ACID.

Initial Production _____

Oil shows _____

Water FW _____ at _____ at _____ at _____
SW _____ at _____ at _____ at _____

Coal _____

Plat _____ Plotted _____ Completion Report X

Drillers Log X Geologic Log _____

Samples X Interval Sheet X

Sample Interval 50' to 2725'

Remarks _____

Geophysical Logs S.P. _____ Res _____ Gamma _____ Neutron _____
Density _____ Sonic _____ Other _____

(To be filled in by Division of Mines)

COMMONWEALTH OF VIRGINIA DEPARTMENT OF LABOR AND INDUSTRY

(To be filled in by Division of Mines)

LEE

County

DIVISION OF MINES

Well No. 3

Jonesville

District

BIG STONE GAP, VIRGINIA

Permit No. 18

Ben Hur

Map

DEEPENED OIL AND GAS WELL COMPLETION REPORT ABANDONMENT

Office No. LE-31

Location Plat LE-31

LE-31

File

(This report and a copy of electrical log, if made, must be submitted to the Division of Mines within 30 days after abandonment or completion of well, as required by Section 45-113, Code of Virginia, 1950.)

Company Wilshire Oil Company of Texas Address 300 Fillmore Street Denver, Colorado Farm Jay V. Graham Acres 525 County Lee District Jonesville Well No. (Company) 1 (3) Elevation (ground surface) 1710 ft.

Location: (Give direction and distance in feet or tenths of a mile from two (2) location reference points or map coordinates shown on location plat or map previously filed with the Division of Mines or shown on quadrangle topographic map of area.)

7400' feet miles S & 3500 E of Intersection of Lat. 36°45' & Long. 83°5' and feet miles of

Surface of tract is owned in fee simple by Jay V. Graham Address Pennington Gap Virginia Mineral rights are owned by Wilshire Oil Company of Texas et al Address 300 Fillmore Street, Denver, Colorado Location made by Paris Burke Drilling commenced May 26, 1967 Drilling contractor Jackson Drlg. Co. Drilling completed June 19, 1967 Address Hamlin, W. Virginia

Well completed as gas well on Operations temporarily suspended June 19, 1967

Well abandoned at feet on Reason Well plugged on 19 Affidavit filed 19 Total depth 2725 feet. Steel line measurement feet. Commenced producing on 19

Oil Well Initial production, oil: 1st 24 hours bbls.; 2nd 24 hours bbls. After shot on from feet to feet with lbs. qts. After shot on from feet to feet with lbs. qts. 1st 24 hours bbls.; 2nd 24 hours bbls. Settled production bbls. per day after producing weeks Gravity and grade of oil Oil pays at (1) feet to feet. Oil shows at (1) None feet to feet. (2) feet to feet. (2) feet to feet. (3) feet to feet. (3) feet to feet. (4) feet to feet. (4) feet to feet. Main production at feet to feet. (5) feet to feet.

Gas Well Gaged /10ths. Water in inch. Initial open flow, gas: /10ths. Mercury in inch. Volume cu. ft. After shot on from feet to feet with lbs. qts. After shot on from feet to feet with lbs. qts. 1st 24 hours cu. ft., 2nd 24 hours cu. ft.

Well No.

File No.

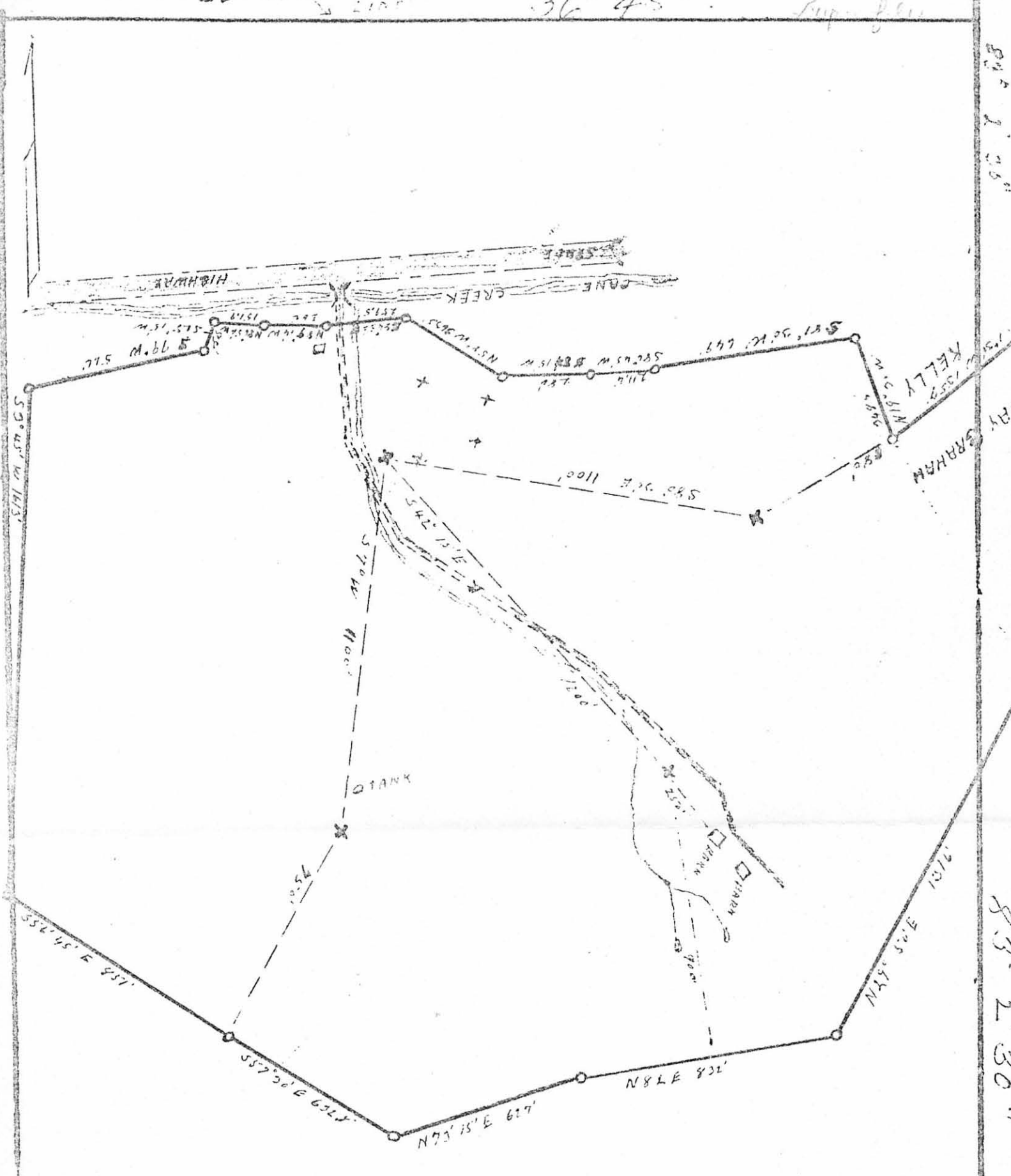
Permit No.

LOG

Furnished by Wilshire Oil Date 1-15-68Compiled by H. Trepagnier Date 1-15-68

SAMPLE No.	FORMATION	COLOR	HARD OR SOFT	TOP (feet)	BOTTOM (feet)	THICKNESS (feet)	REMARKS OIL, GAS, WATER DEPTHS SHUT DOWN FISHING, ETC.
1	Limestone	grey	Hard	0	400	400	
2	Dolo. & Ls.	Grey	Soft	400	600	200	
3	Sandstone	Grey	Hard	600	640	40	
4	Shale	Red	Soft	640	990	350	
5	Sandstone	White	Hard	990	1140	140	
6	Shale	Grey	Soft	1140	1270	80	
7	Shale	Red	Soft	1220	1400	220	
8	Limestone	Grey	Hard	1400	1700	260	
9	Sh. & Ls.	Grey	Hard	1700	1860	160	
10	Shale	Grey	Soft	1860	2106	266	
11	Limestone	Grey	Hard	2106	2734	628	ACIDIZED BELOW 2095

26° 45' 36" 45' Sup. 8.61



New Location-----
 Drill Deeper-----
 Abandonment-----

Company Wilshire Oil Co. of Texas
 Address 300 Fillmore Denver, Colo.
 Farm Graham
 Tract-----Acres-----Lease No.-----
 Well (Farm) No. 3-----Serial No.-----
 Elevation 164

COMMONWEALTH OF VIRGINIA
 VIRGINIA GEOLOGICAL SURVEY
 STATE OIL AND GAS BOARD
 Wytheville, Virginia
 WELL LOCATION MAP
 File No. LE-31

Quadrangle Ben Hur
 County Lee District Jonesville
 Engineer Paris L. Burke