

OIL AND GAS WELL SUMMARY REPORT

API No.: 45-105-20022-00-03

VDMR Well Rep. No.: W-2027

Div. Gas & Oil File No.: LE-22

Operator: WILSHIRE OIL COMPANY OF TEXAS

Farm: GRACE COBB

County: LEE

Co. Well No.: #1

Quadrangle: BEN HUR - 7-1/2'

Location (UTM): N 4,066,170; E 313,950 UTM Zone: 17

Field: BEN HUR Province: VALLEY AND RIDGE

Elev. (specify): 1520' GR TD: 2572' Formation at TD: TRENTON

Initial Gas Flow: Age: ORDOVICIAN

Date compl. or abandoned: AUGUST 13, 1967

Result: DRY HOLE; PLUGGED AND ABANDONED

Gas Shows

Gas Pays

Main Production Producing Formation:

Final Gas Flow Age:

Treatment: WELL ACIDIZED FROM 2484' TO 2494' WITH 3,000 GALLONS OF 28% ACID. WELL FRACTURED WITH 35,000 GALLONS OF WATER WITH 30,000 POUNDS OF 20/40 SAND. SPEAR HEADED WITH 2,000 GALLONS OF ACID.

Initial Oil Production:

Final Production:

Oil Shows: 2481'

Water	FW: X	at: 50' TO 15 GPM	at: 500' TO 30 GPM	at
	SW:	at:	at	at

Coal:

Plat Plotted Completion Report: X

OIL AND GAS WELL SUMMARY REPORT

API No.: 45-105-20022-00-03

VDMR Well Rep. No.: W-2027

Div. Gas & Oil File No.: LE-22

Operator: WILSHIRE OIL COMPANY OF TEXAS

Farm: GRACE CPBB

County: LEE

Co. Well No.: #1

Quadrangle: BEN HUR - 7-1/2'

Location (UTM): N 4,066,170; E 313,950 UTM Zone: 17

Field: BEN HUR Province: VALLEY AND RIDGE

Elev. (specify): 1520' GR TD: 2572' Formation at TD: TRENTON

Initial Gas Flow Age: ORDOVICIAN

Date compl. or abandoned: AUGUST 13, 1967

Result: DRY HOLE; PLUGGED AND ABANDONED

Gas Shows

Gas Pays

Main Production

Producing Formation:

Final Gas Flow

Age:

Treatment: WELL ACIDIZED FROM 2484' TO 2494' WITH 3,000 GALLONS OF 28% ACID. WELL FRACTURED WITH 35,000 GALLONS OF WATER WITH 30,000 POUNDS OF 20/40 SAND. SPEAR HEADED WITH 2,000 GALLONS OF ACID.

Initial Oil Production:

Final Production:

Oil Shows: 2481'

Water	FW: X	at: 50' TO 15 GPM	at: 500' TO 30 GPM	at
	SW:	at:	at	at

Coal

Plat

Plotted

Completion Report: X

Drillers Log: X

Geologic Log

Samples: X

Interval Sheet: X

Sample Interval: 10' TO 2562'

Geophysical Logs

S.P.

Res

Gamma: X

Neutron: X

Density: x Sonic

Other:

Stratigraphic Data Source:

<u>Formation</u>	<u>Top</u>	<u>Datum (Subsea)</u>	<u>Thickness</u>
------------------	------------	---------------------------	------------------

Remarks:

References: THE FOLLOWING LOGS ARE AVAILABLE FROM THE OIL AND GAS INSPECTOR, BIG STONE GAP, VIRGINIA. 1. GAMMA RAY NEUTRON. 2. COMPENSATED FORMATION DENSITY. 3. SIDEWALL NEUTRON POROSITY.

Released to Open File: Completion: NOVEMBER 11, 1967
Samples: YES

(Note: UTM measurements in meters, all others in feet)

OIL AND GAS WELL
SUMMARY REPORT

API No. 45-105-20022-00-03 VDMR Well Rep. No. W-2027
DMQ File No. LE-22

Operator WILSHIRE OIL COMPANY OF TEXAS

Farm GRACE COBB

Co. Well No. # 1

County LEE Quadrangle BEN HUR - 7-1/2'

Location (UTM) N 4,066,170; E 313,950 UTM Zone 17

(Lat. and Long.) _____

Field _____ Province VALLEY AND RIDGE

Elev. (specify) 1520' GR. TD 2572' Form. at TD TRENTON

INITIAL FLOW - _____ Age ORDOVICIAN

Date compl. or abandoned AUGUST 13, 1967

Result DRY HOLE; PLUGGED AND ABANDONED

Gas Shows _____

Gas Pays _____

Main Production _____ Prod. Form. _____

Age _____

Treatment: WELL ACIDIZED FROM 2484' to 2494' WITH 3,000 GALLONS OF 28%
ACID. WELL FRACTURED WITH 35,000 GALLONS OF WATER WITH 30,000 POUNDS OF
20/40 SAND. SPEAR HEADED WITH 2,000 GALLONS OF ACID.

Initial Production _____

FINAL FLOW - _____

Oil shows 2481'

Water FW X at 50' to 15GPM at 500' to 30GPM at _____

SW _____ at _____ at _____ at _____

Coal _____

Plat _____ Plotted _____ Completion Report X

Drillers Log X Geologic Log _____

Samples X Interval Sheet X

Sample Interval 10' to 2562'

Remarks _____

Geophysical Logs S.P. _____ Res _____ Gamma _____ Neutron _____

Density _____ Sonic _____ Other _____

Stratigraphic Data Source

<u>Formation</u>	<u>Top</u>	<u>Datum (Subsea)</u>	<u>Thickness</u>

Remarks

References THE FOLLOWING LOGS ARE AVAILABLE FROM THE OIL AND GAS INSPECTOR, BIG STONE GAP, VIRGINIA. 1. GAMMA RAY NEUTRON, 2. COMPENSATED FORMATION DENSITY, 3. SIDEWALL NEUTRON POROSITY.

Released to Open File: Completion NOVEMBER 11, 1967

Samples YES

(Note: UTM measurements in meters, all others in feet)

Operator: Wilshire Oil Company of Texas
 Farm: Grace Cobb
 Well No.: 1
 Location: Lee County
 6100' N of 36°42'30" N)
 On 83°05' W) approximate
 Elevation: 1520' Gr.
 Total Depth: 2572'
 Drilling Commenced: July 7, 1967
 Drilling Completed: August 13, 1967
 Result: Operations suspended September 31, 1967

DRILLERS LOG

<u>Formation</u>	<u>Top (feet)</u>	<u>Bottom (feet)</u>
Shale, grey, soft	0	30
Dolomite, brnsh-gr., hard	30	170
Limestone, grey, hard	170	320
Sandstone, grey, soft	320	340
Shale, grey, soft	340	380
Shale, red, soft	380	640
Sh. & Ss., red-grey, soft	640	714
Sand, white, hard	714	880
Shale, grey, soft	880	963
Shale, red-grn, soft	963	1160
Ls. & Sh., grey, hard	1160	1460
Shale, grey, soft	1460	1730
Limestone, grey, hard	1730	2398
Ls. & Sh., grey, hard	2398	2572

Remarks: Fresh water at 50' - 15 GPM
 Fresh water at 500' - 30 GPM
 Oil at 2481'
 Well acidized 2484-2494 with 3000 28% acid
 Fractured with 35,000 gal. water with 30,000 #20/40 sd.
 Spearheaded with 2000 gal. acid.

Operator: Wilshire Oil Company of Texas

Farm: Grace Cobb

Well No. : 1

Location: Lee County

On 83°05' W.

6100' N. of 36°42'30" } approximate

Elevation:

Total Depth: 2572'

Drilling Commenced: 1967

Drilling Completed: 1967

Result:

Remarks: Well drilled with rotary rig. Show of oil at 2481'. The well was fractured and a pump installed for testing.

August 3, 1967 - Swabbing at 2483'

INTERVAL SHEET

Page 1 of 3

VDMR Well No: 2027

Date rec'd: 10/24/67 (280'-2562')
12/1/67 (10'-280')

Sample Interval: from 10' to: 2562'

PROP: Grace Cobb Well #1

Number of samples: 247

COMP: Wilshire Oil Co. of Texas

Total Depth: 2572'

COUNTY: Lee

Oil or Gas: ^XWater: Exploratory:

From-To	From-To	From-To	From-To
-	300 - 310	600 - 610	890 - 900
10 - 20	-	-	900 - 910
20 - 30	320 - 330	620 - 630	910 - 920
30 - 40	330 - 340	630 - 640	920 - 930
40 - 50	340 - 350	640 - 650	930 - 940
	350		
50 - 60	350 - 360	650 - 660	940 - 950
60 - 70	360 - 370	660 - 670	950 - 960
70 - 80	370 - 380	670 - 680	960 - 970
80 - 90	380 - 390	680 - 690	970 - 980
90 - 100	390 - 400	690 - 700	980 - 990
100 - 110	400 - 410	700 - 710	990 - 1000
110 - 120	410 - 420	710 - 720	1000 - 1010
120 - 130	420 - 430	720 - 730	1010 - 1020
130 - 140	430 - 440	730 - 740	1020 - 1030
140 - 150	-	740 - 750	1030 - 1040
150 - 160	450 - 460	-	1040 - 1050
160 - 170	460 - 470	760 - 770	1050 - 1060
170 - 180	470 - 480	770 - 780	1060 - 1070
180 - 190	480 - 490	780 - 790	1070 - 1080
190 - 200	490 - 500	-	1080 - 1090
200 - 210	500 - 510	800 - 810	1090 - 1100
210 - 220	510 - 520	810 - 820 #1	1100 - 1110
220 - 230	-	810 - 820 #2	1110 - 1120
230 - 240	530 - 540	820 - 830	1120 - 1130
240 - 250	540 - 550	830 - 840	1130 - 1140
250 - 260	550 - 560	-	1140 - 1150
260 - 270	560 - 570	850 - 860	1150 - 1160
270 - 280	570 - 580	860 - 870	1160 - 1170
280 - 290	580 - 590	870 - 880	1170 - 1180
290 - 300	590 - 600	880 - 890	-

All intervals have both washed and unwashed samples

INTERVAL SHEET

Page 2 of 3

VDMR Well No: 2027

Date rec'd: 10/24/67

Sample Interval: from 10' to: 2562'

PROP: Grace Cobb Well #1

Number of samples: 247

COMP: Wilshire Oil Co. of Texas

Total Depth: 2572'

COUNTY: Lee

Oil or GasX Water: Exploratory:

From-To	From-To	From-To	From-To
1190 - 1200	1490 - 1500	1790 - 1800	2020 - 2030
1200 - 1210	1500 - 1510	1800 - 1810	2030 - 2040
1210 - 1220	1510 - 1520	1810 - 1820	2040 - 2050
1220 - 1230	1520 - 1530	1820 - 1830	2050 - 2060
1230 - 1240	1530 - 1540	1830 - 1840	2060 - 2070
1240 - 1250	1540 - 1550	1840 - 1850	2070 - 2080
1250 - 1260	1550 - 1560	-	2080 - 2090
1260 - 1270	1560 - 1570	1860 - 1870	2090 - 2100
1270 - 1280	1570 - 1580	-	2100 - 2110
1280 - 1290	1580 - 1590	1875 - 1880	2110 - 2120
1290 - 1300	1590 - 1600	1880 - 1885	2120 - 2130
1300 - 1310	1600 - 1610	1885 - 1890	2130 - 2140
1310 - 1320	1610 - 1620	1890 - 1895	2140 - 2150
1320 - 1330	-	1895 - 1900	2150 - 2160
1330 - 1340	1630 - 1640	1900 - 1910	2160 - 2170
1340 - 1350	1640 - 1650	-	2170 - 2180
1350 - 1360	1650 - 1660	1920 - 1925	2180 - 2190
1360 - 1370	1660 - 1670	1925 - 1930	2190 - 2200
1370 - 1380	1670 - 1680	1930 - 1935	2200 - 2210
1380 - 1390	1680 - 1690	1935 - 1940	2210 - 2220
1390 - 1400	1690 - 1700	1940 - 1945	2220 - 2230
1400 - 1410	1700 - 1710	1945 - 1950	2230 - 2240
1410 - 1420	1710 - 1720	1950 - 1955	2240 - 2250
1420 - 1430	1720 - 1730	1955 - 1960	2250 - 2260
1430 - 1440	1730 - 1740	1960 - 1970	2260 - 2270
1440 - 1450	1740 - 1750	1970 - 1980	2270 - 2280
1450 - 1460	1750 - 1760	-	2280 - 2290
1460 - 1470	1760 - 1770	1990 - 2000	2290 - 2300
1470 - 1480	1770 - 1780	2000 - 2010	2300 - 2310
1480 - 1490	1780 - 1790	2010 - 2020	2310 - 2320

All intervals have both washed and unwashed samples

INTERVAL SHEET

Page 3 of 3
 Date rec'd: 10/24/67
 PROP: Grace Cobb Well #1
 COMP: Wilshire Oil Co. of Texas
 COUNTY: Lee

VDMR Well No: 2027
 Sample Interval: from 10' to: 2562'
 Number of samples: 247
 Total Depth: 2572'
 Oil or Gas X Water: Exploratory:

From-To	From-To	From-To	From-To
2320 -2330	2551 -2556	-	-
2330 -2340	2556 -2562	-	-
2340 -2350	-	-	-
2350 -2360	-	-	-
2360 -2370	-	-	-
2370 -2380	-	-	-
2380 -2390	-	-	-
2390 -2400	-	-	-
2400 -2410	-	-	-
2410 -2420	-	-	-
2420 -2430	-	-	-
2430 -2440	-	-	-
2440 -2450	-	-	-
2450 -2460	-	-	-
2460 -2470	-	-	-
2470 -2480	-	-	-
-	-	-	-
2483 -2489	-	-	-
2489 -2493	-	-	-
2493 -2498	-	-	-
2498 -2504	-	-	-
2504 -2505	-	-	-
2505 -2506	-	-	-
2506 -2509	-	-	-
2509 -2510	-	-	-
2509 -2517	-	-	-
2517 -2525	-	-	-
2525 -2537	-	-	-
2537 -2541	-	-	-
2541 -2551	-	-	-

All intervals have both washed and unwashed samples

Formation Density Caliper

AN SNP
✓ FOC
✓ GRN

Schlumberger logs
are available for
this well

gamma ray
neutral

ST OIL + GAS INSPECTOR
HAS A SET ANOTHER SET
COULD BE OBTAINED POSSIBLY
FROM APP LOG SERVICE

20118T
20055T

R-28

Col. Bar
20120
20057

Wilshire Oil Co.
of Texas

Grace Cobb #1

TD 2572 acc. to
Lineberg

(To be filled in by Division of Mines)

COMMONWEALTH OF VIRGINIA DEPARTMENT OF LABOR AND INDUSTRY

(To be filled in by Division of Mines)

LEE County Jonesville District Ben Hur Map LE-22 File

DIVISION OF MINES BIG STONE GAP, VIRGINIA

Well No. 1 Permit No. LE-22 Office No. LE-22 Location Plat LE-22

DEEPENED OIL AND GAS WELL COMPLETION REPORT ABANDONMENT

(This report and a copy of electrical log, if made, must be submitted to the Division of Mines within 30 days after abandonment or completion of well, as required by Section 45-113, Code of Virginia, 1950.)

Company Wilshire Oil Company of Texas Address 300 Fillmore Street, Denver, Colorado 80206 Farm Cobb (Grace) Acres 53 County Lee District Jonesville Well No. (Company) 1 Elevation (ground surface) 1520 ft.

Location: (Give direction and distance in feet or tenths of a mile from two (2) location reference points or map coordinates shown on location plat or map previously filed with the Division of Mines or shown on quadrangle topographic map of area.)

9000 feet miles South of 26°45'0" and 50 feet miles East of 83°5'0"

Surface of tract is owned in fee simple by Grace Cobb Address Ben Hur, Virginia Mineral rights are owned by Wilshire Oil Company of Texas et al Address 300 Fillmore Street, Denver, Colorado Location made by Thompson & Litton Drilling commenced 7-7-67 Drilling contractor Jackson Drilling Company Drilling completed 8-13-67 Address Hamlin, West Virginia

Well completed as gas well on Operations suspended September 31, 1967

Well abandoned at feet on Reason Well plugged on 19 Affidavit filed 19 Total depth 2572 feet. Steel line measurement feet. Commenced producing on 19

Oil Well Initial production, oil: 1st 24 hours bbls.; 2nd 24 hours bbls. After shot on from feet to feet with lbs. qts. 1st 24 hours bbls.; 2nd 24 hours bbls. Settled production bbls. per day after producing weeks Gravity and grade of oil 41° Penn Grade Oil pays at (1) feet to feet. Oil shows at (1) 2481 feet to feet. (2) feet to feet. (2) feet to feet. (3) feet to feet. (3) feet to feet. (4) feet to feet. (4) feet to feet. Main production at feet to feet. (5) feet to feet.

Gas Well Gaged /10ths. Water in inch. Initial open flow, gas: /10ths. Mercury in inch. Volume cu. ft. After shot on from feet to feet with lbs. qts. After shot on from feet to feet with lbs. qts. 1st 24 hours cu. ft., 2nd 24 hours cu. ft.

Rock pressure: Initial lbs.; after hours lbs. days
Settled production cu. ft. per day after producing weeks

Gas pays at (1) feet to feet. Gas shows at (1) feet to feet.
(2) feet to feet. (2) feet to feet.
(3) feet to feet. (3) feet to feet.
(4) feet to feet. (4) feet to feet.
Main production feet to feet. (5) feet to feet.

Fresh water at (1) 50 feet, 15 GPM; (2) 500 feet, 30 GPM; (3) feet, GPM.
Salt water at (1) feet; (2) feet; (3) feet; (4) feet.

Coal: from feet inches to feet inches; from feet inches to feet inches; from feet inches, to feet inches.

Well acidized from 2484 feet to 94 feet with 3000 (quantity) of 28% acid.
from feet to feet with (quantity) of acid.
from feet to feet with (quantity) of acid.

Remarks: Fractured w/35,000 gals wtr. w/30,000# 20/40 sd. Spearheaded w/2000 gal. acid.

CASING AND TUBING				PACKERS		
SIZE	USED IN DRILLING	LEFT IN WELL	PERFORATED	KIND	SIZE	SET AT
(inch)	(feet)	(feet)	(feet) to (feet)			
13-3/8		33	Cem w/10 sax.			
9-5/8		60	Cem w/10 sax.			
7		603	Cem w/32 sax			
4-1/2		2544	Cem w/45 sax Perf. 2484-94			

LINERS			
SIZE	USED IN DRILLING	LEFT IN WELL	PERFORATED
(inch)	(ft.)	(ft.)	(ft. to ft.)

Casing Cemented: 13-3/8 inch. from 33 feet to Surface feet. Date 7-9-67
7 inch. from 603 feet to 500 feet. Date 7-27-67
4-1/2 inch. from 2544 feet to 2100 feet. Date 8-15-67

Remarks: (Shut down, depths, dates; fishing jobs, depths, dates; caving; other notes)

Samples or cuttings will be available for examination by a member of the Virginia Geological Survey Yes (Yes) (No)
Will be furnished the Virginia Geological Survey upon request Yes (Yes) (No) , if sacks for same are furnished by the Survey Yes (Yes) (No)

Electrical log made ..X... or not made (check which).
Copy furnished herewith or will be submitted on or by ,19.....
Depths Gamma Ray-Neutron 100'-4483'
Sidewall Neutron Porosity 1700' -2572'
Compensated Formation Density 1700' -2572'
Perforating Log 2200' -2545'

The operator requests that information given herein and log or logs be kept confidential for a period of ninety days after completion of the well covered by this report No (Yes) (No)

Well No. 1File No. LE-22Permit No. LE-22

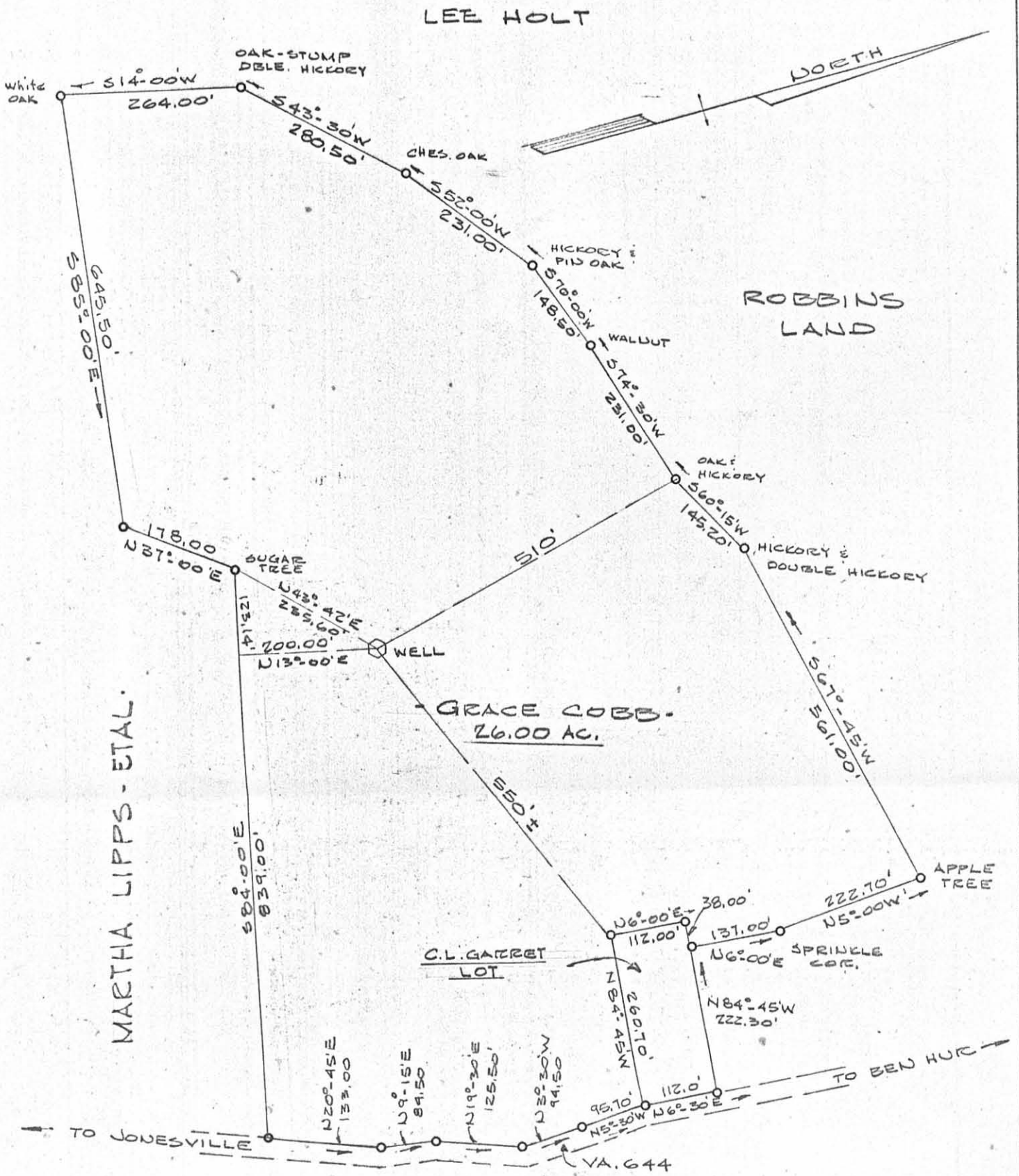
LOG

Furnished by Wilshire Date 1-12-68Compiled by H. Trepagnier Date 1-12-68

SAMPLE No.	FORMATION	COLOR	HARD OR SOFT	TOP (feet)	BOTTOM (feet)	THICKNESS (feet)	REMARKS OIL, GAS, WATER DEPTHS SHUT DOWN FISHING, ETC.
1	Shale	Grey	Soft	0	30	30	
2	Dolomite	Brnsh.-Gr.	Hard	30	170	140	WATER AT 50'
3	Limestone	Grey	Hard	170	320	150	
4	Sandstone	Grey	Soft	370	340	20	
5	Shale	Grey	Soft	340	380	40	
6	Shale	Red	Soft	380	640	260	WATER AT 500'
7	Sh. & Ss.	Red-Grey	Soft	640	714	74	
8	Sand	White	Hard	714	880	166	
9	Shale	Grey	Soft	880	963	83'	
10	Shale	Red - Grn.	Soft	963	1160	197	
11	Ls. & Sh.	Grey	Hard	1160	1460	300	
12	Shale	Grey	Soft	1460	1730	270	
13	Limestone	Grey	Hard	1730	2398	668	OIL AT 2481'
14	Ls. & Sh.	Grey	Hard	2398	2572	174	

LONGITUDE 36°-42'-35"

LATITUDE 33°-05'-00"



NEW LOCATION
 DRILL DEEPER
 ABANDONMENT

• COMPANY DAVID LAW - ET.AL
 • ADDRESS 413 UNION TRUST BLDG. PARKERSBURG, W. VA.
 • FARM GRACE COBB
 • TRACT 1 ACRES 26.00 LEASE NO. 144
 • WELL (FARM) NO. Z-L SERIAL NO. _____
 • ELEVATION (SPIRIT LEVEL) _____ GROUND
 • QUADRANGLE BEN HUR
 • COUNTY LEE DISTRICT JONESVILLE
 • ENGINEER THOMPSON & LITTON - L. ADKINS
 • ENGINEER'S REGISTRATION NO. P.L.S. 871
 • FILE NO. 1198 DRAWING NO. 1
 • DATE 24 NOV. 66 SCALE 1" = 200'

COMMONWEALTH OF VIRGINIA
 DIVISION OF MINES
 BIG STONE GAP, VA.
Well Grace Cobb #1
**WELL LOCATION
 MAP**

FILE NO. LE-22
 + DENOTES LOCATION OF WELL ON U.S. TOPOGRAPHIC MAPS - SCALE 1 TO LATITUDE AND LONGITUDE BEING REPRESENTED BY BORDER LINES AS SHOWN.
 - DENOTES 1" SPACES ON BORDER LINE OF ORIGINAL TRACING.