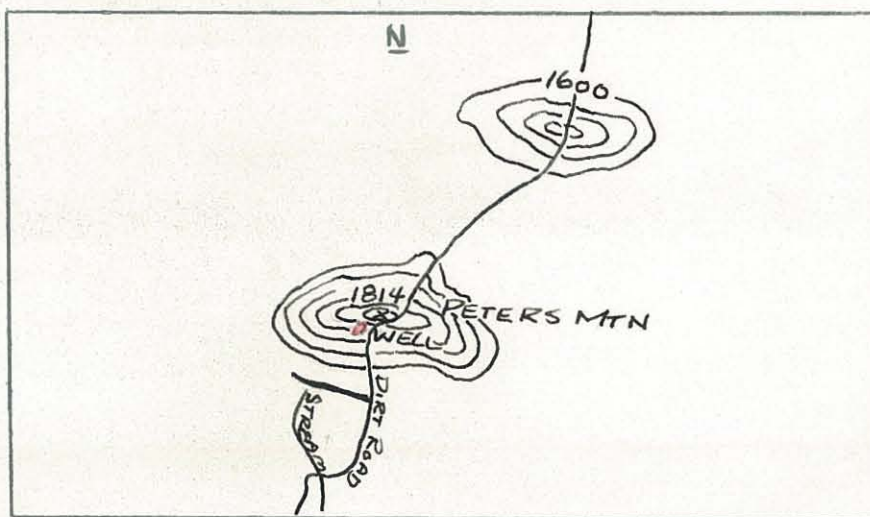


Log # 114 W # 919 County Albemarle - 891 Date 10/23/63

Owner American Tel & Tel, Peters Mt. # 2 Use Industrial

Location (Cement Plant) Approximately 100-200 yds. S.W. of main installation  
on top of mountain and 50 yds. N. of main access road.



Well Data

Driller: Sydnor Pump & Well Co.

Completed: Sept '63

Total Depth: 620' - (1)

Static W. L.: 65'

Casing: 10'

Bedrock: ?

Hole Size: 6"

Yield: ?

H<sub>2</sub>O Temp:

Aquifers:

Elev: Approx. 1700'

Geology: Catoctin

Instrument Data

SP setting ↑ 20 Approx. ↑ 44 /min.

Res. " ↑ 200 " ' /min.

Gamma " ↑ .0025 " ↓ 29 ' /min.

T. C. " E-3, G-16

Fluid: Fresh water

Running Time 1 Hrs. 30 Mins.

Depth of Log: Elec. 450 ' Gamma 450 '

Ground Electrode 70'

Remarks (1) Drill rod was blocking hole at approximately 480'.

Logged By Wilkenloh & Sheffield