



Commonwealth of Virginia
 Department of Mines, Minerals, and Energy
 Division of Gas and Oil
 P.O. Box 1416; Abingdon, VA 24212
 Telephone: (276) 676-5423

Tracking Number: 326
 Company: Equitable Production Company
 File Number: DI-1625
 Operations Name: V-536779
 Operation Type: Gas
 Drilling Report Type: Original

DRILLING REPORT (DGO-GO-14)

1. Drilling Data

Date drilling commenced: 2/6/2007 Drilling Contractor: Gasco
 Date drilling completed: 2/14/2007 Rig Type: Rotary Cable Tool
 Driller's Total Depth (feet): 5,100
 Log Total Depth (feet): 5,108 Formation At Total Depth BEREA

2. Final Location Plat (as required by 4 VAC25-150-360.C.)

Permitted State Plane X 847,932 Final Plat State Plane X: 847,930
 Permitted State Plane Y: 293,578 Final Plat State Plane Y: 293,582

Plat Previously Submitted Or...

List of Attached Items:

Description	FileName
Final Plat 536779	V-536779 final plat.tif

3. Geological Data

Fresh Water At:

Depth (in feet)	Rate	Unit of Measure

Salt Water At:

Depth (in feet)	Rate	Unit of Measure

Coal Seams

List of Attached Items:

Description	FileName
Coal Seams 536779	Coal Seams.doc

Gas and Oil Shows

List of Attached Items:

Description	FileName
Gas & Oil Shows	Gas and Oil Shows.doc

4. Electric Logs (As required by 4VAC25-150-280.A.)

List all logs run: GR/Density/Temp/Induction/Neutron

Did logs disclose vertical locations of a coal seam? Yes No

5. Survey Results (As required by 4VAC25-150-280.B.2)

List of Attached Items:

Description	FileName
Survey Results 536779	Survey Results.doc

6. Casing and Tubing Program

List of Attached Items:

Description	FileName
csg 536779	Casing Dat1.doc
Tbg. 536779	Tubing Size.doc

7. Remarks

Use this space to note any conditions or occurrences, such as lost circulation, fishing jobs, junk left in hole, sidetracks, squeeze jobs, etc., not shown above. Include data and depth of condition/occurrence.

8. Drillers Log

Compiled By: _____

List of Attached Items:

Description	FileName
drillers log 536779	Drillers Log.doc

9. Comments

The drillers Log is incomplete. The csg. cmt. to surface needs to be a seperate column.
Corrected csg & drillers log 06/21 KT

10. Signature

Permitee: Equitable Production Company Date: 6/25/2007 (Company)

Signed By: L. Todd Tetrick Title: Director of Drilling (Signature)

INTERNAL USE ONLY	
Submit Date: <u>6/25/2007</u>	
Status: <u>Inspr Approved</u>	Date: <u>6/27/2007</u>
Final PDF Date: <u>7/3/2007</u>	

TOTAL UNIT AREA
= 112.69 ACRES

— — — — — DENOTES MINERAL LINE
- - - - - DENOTES SURFACE LINE
- - - - - DENOTES SURFACE & MINERAL LINES

FINAL PLAT

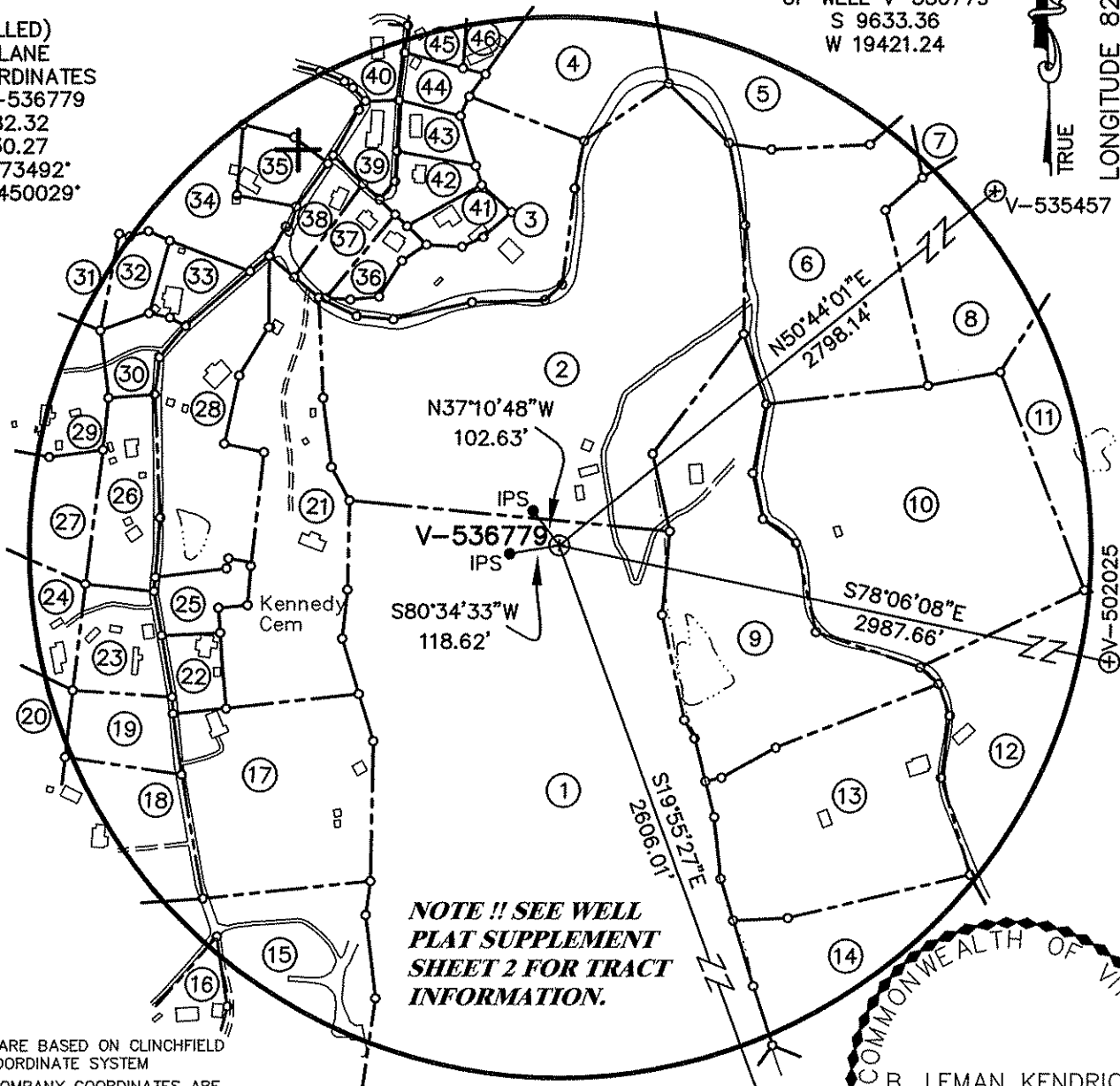
The undersigned hereby certifies that the final location is within ten (10) feet of the location shown on the well plat dated November 30, 2006.

LATITUDE 37°05'00"

(AS-DRILLED)
CCC COORDINATES
OF WELL V-536779
S 9633.36
W 19421.24

(AS-DRILLED)
STATE PLANE
NAD 27 COORDINATES
OF WELL V-536779
N 293582.32
E 847930.27
LAT 37.073492°
LON -82.450029°

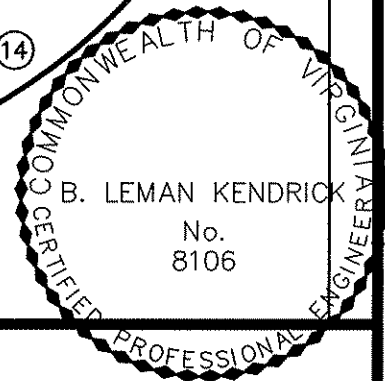
LONGITUDE 82°25'00"
3588'
TRUE



**NOTE !! SEE WELL
PLAT SUPPLEMENT
SHEET 2 FOR TRACT
INFORMATION.**

COORDINATES
OF BENCH MARK
S 77498.41
E 22826.48
ELEV. = 1754.09

NOTE !!!
WELL COORDINATES ARE BASED ON CLINCHFIELD
COAL COMPANY'S COORDINATE SYSTEM
CLINCHFIELD COAL COMPANY COORDINATES ARE
CALCULATED FROM STATE PLANE WELL COORDINATES.
PROPERTY INFORMATION PROVIDED BY EQUITABLE
PRODUCTION COMPANY.
ELEVATIONS ARE BASED ON NGS CONTROL ST. PAUL 2.



WELL LOCATION PLAT

COMPANY Equitable Production Company WELL NAME AND NUMBER V-536779

TRACT No. LEASE NO. 906344 ELEVATION 2175.25 (GPS) QUADRANGLE CANEY RIDGE

COUNTY DICKENSON DISTRICT KENADY SCALE: 1" = 400' DATE FEBRUARY 13, 2007

THIS PLAT IS A NEW PLAT ; AN UPDATED PLAT ; OR A FINAL LOCATION PLAT x

PROPOSED TOTAL DEPTH OF WELL =

+ DENOTES THE LOCATION OF A WELL ON UNITED STATES TOPOGRAPHIC MAPS, SCALE 1 TO 24,000, LATITUDE AND LONGITUDE LINES BEING REPRESENTED BY BORDER LINES AS SHOWN.

B. Leman Kendrick 2/13/07

(AFFIX SEAL)

LICENSED PROFESSIONAL ENGINEER OR LICENSED LAND SURVEYOR

X:\2007 Project Desig\188_V-536779\dwg\188_A.S-D.dwg

①

LEASE No. 906344
THEODORE GRAY & CASSIE A. EDWARDS
29.80 ACRES
A.A. KENNADY / DI-21
251.220 ACRES
DICKENSON-RUSSELL COAL COMPANY, LLC/ALPHA
LAND & RESERVES, LLC/ACIN, LLC/WBRD, LLC - coal
THEODORE GRAY & CASSIE A. EDWARDS - surface, oil & gas
GAS 24.10 AC. 21.39%

②

LEASE No. 906405
SCOTTIE KLINE POWERS
19.80 ACRES
A.A. KENNADY / DI-21
251.220 ACRES
DICKENSON-RUSSELL COAL COMPANY, LLC/ALPHA
LAND & RESERVES, LLC/ACIN, LLC/WBRD, LLC - coal
SCOTTIE KLINE POWERS - surface, oil & gas
GAS 14.26 AC. 12.65%

③

UNLEASED
TERRY & JANETH WILLIAMS
3.30 ACRES
A.A. KENNADY / DI-21
251.220 ACRES
DICKENSON-RUSSELL COAL COMPANY, LLC/ALPHA
LAND & RESERVES, LLC/ACIN, LLC/WBRD, LLC - coal
TERRY & JANETH WILLIAMS - surface, oil & gas
GAS 3.30 AC. 2.93%

④

LEASE No. 906419
FLETCHER & JEAN STROUTH
12.971 ACRES
A.A. KENNADY / DI-21
251.220 ACRES
DICKENSON-RUSSELL COAL COMPANY, LLC/ALPHA
LAND & RESERVES, LLC/ACIN, LLC/WBRD, LLC - coal
FLETCHER & JEAN STROUTH - surface, oil & gas
GAS 2.13 AC. 1.89%

⑤

LEASE No. 906678
CLAYTON & MELISSA BAKER
5.50 ACRES
A.A. KENNADY / DI-21
251.220 ACRES
DICKENSON-RUSSELL COAL COMPANY, LLC/ALPHA
LAND & RESERVES, LLC/ACIN, LLC/WBRD, LLC - coal
CLAYTON & MELISSA BAKER - surface, oil & gas
GAS 1.93 AC. 1.71%

⑥

LEASE No. 906298
CARNELL SALYERS
5.50 ACRES
A.A. KENNADY / DI-21
251.220 ACRES
DICKENSON-RUSSELL COAL COMPANY, LLC/ALPHA
LAND & RESERVES, LLC/ACIN, LLC/WBRD, LLC - coal
CARNELL SALYERS - surface, oil & gas
GAS 5.24 AC. 4.65%

⑦

LEASE No. 905195
CLAYTON & MELISSA BAKER
10.00 ACRES
A.A. KENNADY / DI-21
251.220 ACRES
DICKENSON-RUSSELL COAL COMPANY, LLC/ALPHA
LAND & RESERVES, LLC/ACIN, LLC/WBRD, LLC - coal
CLAYTON & MELISSA BAKER - surface, oil & gas
GAS 0.02 AC. 0.02%

⑧

LEASE No. 905194
VESTER & EDNA MEADE and CLIFFORD & ARBUTUS DAVIS
10.00 ACRES
A.A. KENNADY / DI-21
251.220 ACRES
DICKENSON-RUSSELL COAL COMPANY, LLC/ALPHA
LAND & RESERVES, LLC/ACIN, LLC/WBRD, LLC - surface & coal
VESTER & EDNA MEADE and CLIFFORD & ARBUTUS DAVIS -
oil & gas
GAS 2.46 AC. 2.18%

⑨

LEASE No. 906344
GRAY & CASSIE EDWARDS
7.30 ACRES
A.A. KENNADY / DI-21
251.220 ACRES
DICKENSON-RUSSELL COAL COMPANY, LLC/ALPHA
LAND & RESERVES, LLC/ACIN, LLC/WBRD, LLC - coal
GRAY & CASSIE EDWARDS - surface, oil & gas
GAS 7.30 AC. 6.48%

⑩

LEASE No. 906298
CARNELL SALYERS
7.50 ACRES
A.A. KENNADY / DI-21
251.220 ACRES
DICKENSON-RUSSELL COAL COMPANY, LLC/ALPHA
LAND & RESERVES, LLC/ACIN, LLC/WBRD, LLC - coal
CARNELL SALYERS - surface, oil & gas
GAS 7.50 AC. 6.66%



THOMPSON & LITTON

40 Main Street
P.O. Box 1869
Clintwood, Virginia 24228

EQUITABLE PRODUCTION COMPANY
WELL No. V-536779
WELL PLAT SUPPLEMENT
SHEET 2

PROJECT No.:
8158 PLAT

SCALE: 1" = 400'

DATE: FEBRUARY 13, 2007

11

LEASE No. 904576L
A.A. KENNADY / DI-21
32.438 ACRES
DICKENSON-RUSSELL COAL COMPANY, LLC/ALPHA
LAND & RESERVES, LLC/ACIN, LLC/WBRD, LLC - coal
ACIN, LLC - surface, oil & gas
GAS 1.37 AC. 1.22%

12

LEASE No. 904576L
A.A. KENNADY / DI-21
32.438 ACRES
DICKENSON-RUSSELL COAL COMPANY, LLC/ALPHA
LAND & RESERVES, LLC/ACIN, LLC/WBRD, LLC - coal
ACIN, LLC - surface, oil & gas
GAS 3.14 AC. 2.79%

13

LEASE No. 906298
CARNELL SALYERS
5.50 ACRES
A.A. KENNADY / DI-21
251.220 ACRES
DICKENSON-RUSSELL COAL COMPANY, LLC/ALPHA
LAND & RESERVES, LLC/ACIN, LLC/WBRD, LLC - coal
CARNELL SALYERS - surface, oil & gas
GAS 5.50 AC. 4.88%

14

LEASE No. 906349
JENNIFER SALYERS EDWARDS
6.20 ACRES
A.A. KENNADY / DI-21
251.220 ACRES
DICKENSON-RUSSELL COAL COMPANY, LLC/ALPHA
LAND & RESERVES, LLC/ACIN, LLC/WBRD, LLC - coal
JENNIFER SALYERS EDWARDS - surface, oil & gas
GAS 2.17 AC. 1.93%

15

UNLEASED
GARNETT MULLINS
8.30 ACRES
P.H. KENNEDY / DI-24
154.349 ACRES
DICKENSON-RUSSELL COAL COMPANY, LLC/ALPHA
LAND & RESERVES, LLC/ACIN, LLC/WBRD, LLC - coal
GARNETT MULLINS - surface, oil & gas
GAS 2.43 AC. 2.16%

16

UNLEASED
THURL & JOYCE MULLINS
0.72 ACRES
P.H. KENNEDY / DI-24
154.349 ACRES
DICKENSON-RUSSELL COAL COMPANY, LLC/ALPHA
LAND & RESERVES, LLC/ACIN, LLC/WBRD, LLC - coal
THURL & JOYCE MULLINS - surface, oil & gas
GAS 0.01 AC. 0.01%

17

UNLEASED
KENNETH MULLINS
4.33 ACRES
P.H. KENNEDY / DI-24
154.349 ACRES
DICKENSON-RUSSELL COAL COMPANY, LLC/ALPHA
LAND & RESERVES, LLC/ACIN, LLC/WBRD, LLC - coal
KENNETH MULLINS - surface, oil & gas
GAS 4.33 AC. 3.84%

18

UNLEASED
RICKEY SCOTT & SANDRA INEZ STANLEY
2.59 ACRES
P.H. KENNEDY / DI-24
154.349 ACRES
DICKENSON-RUSSELL COAL COMPANY, LLC/ALPHA
LAND & RESERVES, LLC/ACIN, LLC/WBRD, LLC - coal
RICKEY SCOTT & SANDRA INEZ STANLEY - surface, oil & gas
GAS 1.32 AC. 1.17%

19

UNLEASED
RICKEY SCOTT & SANDRA INEZ STANLEY
1.00 ACRES
P.H. KENNEDY / DI-24
154.349 ACRES
DICKENSON-RUSSELL COAL COMPANY, LLC/ALPHA
LAND & RESERVES, LLC/ACIN, LLC/WBRD, LLC - coal
RICKEY SCOTT & SANDRA INEZ STANLEY - surface, oil & gas
GAS 0.98 AC. 0.87%

20

UNLEASED
RICKY & SANDRA STANLEY
1.65 ACRES
P.H. KENNEDY / DI-24 & JESSEE DAVIS / DI-10
154.349 ACRES & 128.026 ACRES
DICKENSON-RUSSELL COAL COMPANY, LLC/ALPHA
LAND & RESERVES, LLC/ACIN, LLC/WBRD, LLC - coal
RICKY & SANDRA STANLEY - surface, oil & gas
GAS 0.11 AC. 0.10%



THOMPSON & LITTON

40 Main Street
P.O. Box 1869
Clintwood, Virginia 24228

EQUITABLE PRODUCTION COMPANY
WELL No. V-536779
WELL PLAT SUPPLEMENT
SHEET 3

PROJECT No.:
8158 PLAT

SCALE: 1" = 400'

DATE: FEBRUARY 13, 2007

21

UNLEASED
KENNETH REED STANLEY
4.33 ACRES
P.H. KENNEDY / DI-24
154.349 ACRES
DICKENSON-RUSSELL COAL COMPANY, LLC/ALPHA
LAND & RESERVES, LLC/ACIN, LLC/WBRD, LLC - coal
KENNETH REED STANLEY - surface, oil & gas
PAUL STANLEY - life estate
GAS 4.83 AC. 4.28%

22

UNLEASED
CARLA EDWARDS, et al
0.51 ACRES
P.H. KENNEDY / DI-24
154.349 ACRES
DICKENSON-RUSSELL COAL COMPANY, LLC/ALPHA
LAND & RESERVES, LLC/ACIN, LLC/WBRD, LLC - coal
CARLA EDWARDS, et al - surface, oil & gas
GAS 0.51 AC. 0.45%

23

LEASE No. 906463
DONALD & RENA POTTER
1.09 ACRES
P.H. KENNEDY / DI-24
154.349 ACRES
DICKENSON-RUSSELL COAL COMPANY, LLC/ALPHA
LAND & RESERVES, LLC/ACIN, LLC/WBRD, LLC - coal
DONALD & RENA POTTER - surface, oil & gas
GAS 1.09 AC. 0.97%

24

LEASE No. 906404
SAMMY & DARLA GAIL CARTY
1.51 ACRES
JESSEE DAVIS / DI-10 & P.H. KENNEDY / DI-24
128.026 ACRES & 154.349 ACRES
DICKENSON-RUSSELL COAL COMPANY, LLC/ALPHA
LAND & RESERVES, LLC/ACIN, LLC/WBRD, LLC - coal
SAMMY & DARLA GAIL CARTY - surface, oil & gas
GAS 0.62 AC. 0.55%

25

LEASE No. 906677
CARL RAY & RITA GALE LYALL
0.50 ACRES
P.H. KENNEDY / DI-24
154.349 ACRES
DICKENSON-RUSSELL COAL COMPANY, LLC/ALPHA
LAND & RESERVES, LLC/ACIN, LLC/WBRD, LLC - coal
CARL RAY & RITA GALE LYALL - surface, oil & gas
GAS 0.65 AC. 0.57%

26

UNLEASED
LARKIN & DELORES CARTY
1.58 ACRES
P.H. KENNEDY / DI-24
154.349 ACRES
DICKENSON-RUSSELL COAL COMPANY, LLC/ALPHA
LAND & RESERVES, LLC/ACIN, LLC/WBRD, LLC - coal
LARKIN & DELORES CARTY - oil & gas
AVERY RAY & LINDA LUTHER CARTY - surface
GAS 1.58 AC. 1.40%

27

UNLEASED
FREDDIE CARTY
1.45 ACRES
JESSEE DAVIS / DI-10 & P.H. KENNEDY / DI-24
128.026 ACRES & 154.349 ACRES
DICKENSON-RUSSELL COAL COMPANY, LLC/ALPHA
LAND & RESERVES, LLC/ACIN, LLC/WBRD, LLC - coal
FREDDIE CARTY - surface, oil & gas
LARKIN & DELORES CARTY - life estate
GAS 0.95 AC. 0.84%

28

LEASE No. 906505
BANNER E. & BEULAH MAE MARSHALL
3.32 ACRES
P.H. KENNEDY / DI-24
154.349 ACRES
DICKENSON-RUSSELL COAL COMPANY, LLC/ALPHA
LAND & RESERVES, LLC/ACIN, LLC/WBRD, LLC - coal
BANNER E. & BEULAH MAE MARSHALL - surface, oil & gas
PAUL STANLEY - life estate
GAS 3.29 AC. 2.92%



THOMPSON & LITTON

40 Main Street
P.O. Box 1869
Clintwood, Virginia 24228

EQUITABLE PRODUCTION COMPANY
WELL No. V-536779
WELL PLAT SUPPLEMENT
SHEET 4

PROJECT No.:
8158 PLAT

SCALE: 1" = 400'

DATE: FEBRUARY 13, 2007

29

UNLEASED
LARKIN CARTY, et al
2.55 ACRES
JESSEE DAVIS / DI-10 & P.H. KENNEDY / DI-24
128.026 ACRES & 154.349 ACRES
DICKENSON-RUSSELL COAL COMPANY, LLC/ALPHA
LAND & RESERVES, LLC/ACIN, LLC/WBRD, LLC - coal
LARKIN CARTY, et al - surface, oil & gas
GAS 0.81 AC. 0.72%

30

UNLEASED
JIMMY DALE RATLIFF / HATTIE JANE RATLIFF
0.64 ACRES
P.H. KENNEDY / DI-24
154.349 ACRES
DICKENSON-RUSSELL COAL COMPANY, LLC/ALPHA
LAND & RESERVES, LLC/ACIN, LLC/WBRD, LLC - coal
JIMMY DALE RATLIFF - 1/2 undivided interest surface, oil & gas
HATTIE JANE RATLIFF - 1/2 undivided interest oil & gas
GAS 0.64 AC. 0.57%

31

UNLEASED
JIMMY DALE RATLIFF / HATTIE JANE RATLIFF
0.536 ACRES
P.H. KENNEDY / DI-24
154.349 ACRES
DICKENSON-RUSSELL COAL COMPANY, LLC/ALPHA
LAND & RESERVES, LLC/ACIN, LLC/WBRD, LLC - coal
JIMMY DALE RATLIFF - 1/2 undivided interest surface, oil & gas
HATTIE JANE RATLIFF - 1/2 undivided interest oil & gas
GAS 0.10 AC. 0.09%

32

UNLEASED
JIMMY DALE RATLIFF / HATTIE JANE RATLIFF
0.557 ACRES
P.H. KENNEDY / DI-24
154.349 ACRES
DICKENSON-RUSSELL COAL COMPANY, LLC/ALPHA
LAND & RESERVES, LLC/ACIN, LLC/WBRD, LLC - coal
JIMMY DALE RATLIFF - 1/2 undivided interest surface, oil & gas
HATTIE JANE RATLIFF - 1/2 undivided interest oil & gas
GAS 0.52 AC. 0.46%

33

LEASE No. 906676
GARY D. & PATRICIA G. CARTY
0.60 ACRES
P.H. KENNEDY / DI-24
154.349 ACRES
DICKENSON-RUSSELL COAL COMPANY, LLC/ALPHA
LAND & RESERVES, LLC/ACIN, LLC/WBRD, LLC - coal
GARY D. & PATRICIA G. CARTY - surface, oil & gas
GAS 0.60 AC. 0.53%

34

UNLEASED
RICKY SCOTT & SANDRA INEZ STANLEY
3.433 ACRES
P.H. KENNEDY / DI-24
154.349 ACRES
DICKENSON-RUSSELL COAL COMPANY, LLC/ALPHA
LAND & RESERVES, LLC/ACIN, LLC/WBRD, LLC - coal
RICKY SCOTT & SANDRA INEZ STANLEY - surface, oil & gas
GAS 2.05 AC. 1.82%

35

UNLEASED
PAUL RAY STANLEY
0.638 ACRES
P.H. KENNEDY / DI-24
154.349 ACRES
DICKENSON-RUSSELL COAL COMPANY, LLC/ALPHA
LAND & RESERVES, LLC/ACIN, LLC/WBRD, LLC - coal
PAUL RAY STANLEY - surface, oil & gas
RICKY SCOTT & SANDRA INEZ STANLEY - life estate
GAS 0.64 AC. 0.57%

36

UNLEASED
PHILLIP J. & TAMMY A. JONES
0.36 ACRES
A.A. KENNEDY / DI-21
251.220 ACRES
DICKENSON-RUSSELL COAL COMPANY, LLC/ALPHA
LAND & RESERVES, LLC/ACIN, LLC/WBRD, LLC - coal
PHILLIP J. & TAMMY A. JONES - surface, oil & gas
GAS 0.43 AC. 0.38%

37

UNLEASED
GUYETTA R. STANLEY
0.41 ACRES
A.A. KENNEDY / DI-21
251.220 ACRES
DICKENSON-RUSSELL COAL COMPANY, LLC/ALPHA
LAND & RESERVES, LLC/ACIN, LLC/WBRD, LLC - coal
GUYETTA R. STANLEY - surface, oil & gas
GAS 0.51 AC. 0.45%

38

UNLEASED
JAMES W. & SANDRA MARSHALL
0.35 ACRES
A.A. KENNEDY / DI-21
251.220 ACRES
DICKENSON-RUSSELL COAL COMPANY, LLC/ALPHA
LAND & RESERVES, LLC/ACIN, LLC/WBRD, LLC - coal
JAMES W. & SANDRA MARSHALL - surface, oil & gas
GAS 0.45 AC. 0.40%



THOMPSON & LITTON

40 Main Street
P.O. Box 1869
Clintwood, Virginia 24228

EQUITABLE PRODUCTION COMPANY
WELL No. V-536779
WELL PLAT SUPPLEMENT
SHEET 5

PROJECT No.:
8158 PLAT

SCALE: 1" = 400'

DATE: FEBRUARY 13, 2007

39

LEASE No. 906415
JOHN FRANKLIN & VICKY MARIE MULLINS
0.42 ACRES
A.A. KENNEDY / DI-21
251.220 ACRES
DICKENSON-RUSSELL COAL COMPANY, LLC/ALPHA
LAND & RESERVES, LLC/ACIN, LLC/WBRD, LLC - coal
JOHN FRANKLIN & VICKY MARIE MULLINS - surface, oil & gas
GAS 0.42 AC. 0.37%

40

LEASE No. 906462
JONATHAN & AMANDA MOORE
0.494 ACRES
A.A. KENNEDY / DI-21 & P.H. KENNEDY / DI-24
251.220 ACRES & 154.349 ACRES
DICKENSON-RUSSELL COAL COMPANY, LLC/ALPHA
LAND & RESERVES, LLC/ACIN, LLC/WBRD, LLC - coal
JONATHAN & AMANDA MOORE - surface, oil & gas
GAS 0.36 AC. 0.32%

41

LEASE No. 906654
WILEY LEE & CHARLENE C. LOTHERY
0.41 ACRES
A.A. KENNEDY / DI-21
251.220 ACRES
DICKENSON-RUSSELL COAL COMPANY, LLC/ALPHA
LAND & RESERVES, LLC/ACIN, LLC/WBRD, LLC - coal
WILEY LEE & CHARLENE C. LOTHERY - surface, oil & gas
GAS 0.41 AC. 0.36%

42

UNLEASED
S. ALBERT & JANE H. MULLINS
0.44 ACRES
A.A. KENNEDY / DI-21
251.220 ACRES
DICKENSON-RUSSELL COAL COMPANY, LLC/ALPHA
LAND & RESERVES, LLC/ACIN, LLC/WBRD, LLC - coal
S. ALBERT & JANE H. MULLINS - surface, oil & gas
GAS 0.44 AC. 0.39%

43

LEASE No. 906464
LANICE & SHIRLEY CLAY
0.37 ACRES
A.A. KENNEDY / DI-21
251.220 ACRES
DICKENSON-RUSSELL COAL COMPANY, LLC/ALPHA
LAND & RESERVES, LLC/ACIN, LLC/WBRD, LLC - coal
LANICE & SHIRLEY CLAY - surface, oil & gas
GAS 0.37 AC. 0.33%

44

LEASE No. 906701
BENNIE & LORI LOTHERY
0.35 ACRES
A.A. KENNEDY / DI-21
251.220 ACRES
DICKENSON-RUSSELL COAL COMPANY, LLC/ALPHA
LAND & RESERVES, LLC/ACIN, LLC/WBRD, LLC - coal
BENNIE & LORI LOTHERY - surface, oil & gas
GAS 0.35 AC. 0.31%

45

LEASE No. 906701
BENNIE C. & LORI ANN LOTHERY
0.27 ACRES
A.A. KENNEDY / DI-21
251.220 ACRES
DICKENSON-RUSSELL COAL COMPANY, LLC/ALPHA
LAND & RESERVES, LLC/ACIN, LLC/WBRD, LLC - coal
BENNIE C. & LORI ANN LOTHERY - surface, oil & gas
GAS 0.21 AC. 0.19%

46

LEASE No. 906701
BENNIE C. & LORI ANN LOTHERY
0.35 ACRES
A.A. KENNEDY / DI-21
251.220 ACRES
DICKENSON-RUSSELL COAL COMPANY, LLC/ALPHA
LAND & RESERVES, LLC/ACIN, LLC/WBRD, LLC - coal
BENNIE C. & LORI ANN LOTHERY - surface, oil & gas
GAS 0.26 AC. 0.23%



THOMPSON & LITTON

40 Main Street
P.O. Box 1869
Clintwood, Virginia 24228

EQUITABLE PRODUCTION COMPANY
WELL No. V-536779
WELL PLAT SUPPLEMENT
SHEET 6

PROJECT No.:
8158 PLAT

SCALE: 1" = 400'

DATE: FEBRUARY 13, 2007

Coal Seams & Open Mines
--

Type

Coal

Coal

Coal

Coal

From

150'-51',280'-81',350'-
51',390'-91',570'-71'

800'-01',1090'-91',1205'-
06',1390'-91',1450'-51'

1605'-06',1840'-41',1865'-
66',1945'-46',2040'-41'

2205'-06'

Gas and Oil Shows

Gas Tests

<u>Depth</u>	<u>Remarks</u>
3,005	TSTM
4,409	TSTM
4,847	TSTM
4,941	TSTM
5,100	TSTM

**Survey
Results**

<u>Depth</u>	<u>Direction/Distance/Degrees From True Vertical</u>
196	1/4
384	1/4
584	1/4
763	1/4
1,141	1/4
1,330	1/4
1,520	1/4
1,709	1/4
1,899	1/4
2,087	1/2
2,276	1/2

Casing Data

Casing Outside Diameter	Casing Interval	Hole Size	Cement used in Cu. ft.	Cmtd To Surface	Date Cemented	Cement Baskets
12 3/4	21	15				
9 5/8	314	12 1/4	147.50	y	02/06/2007	94
7	2389	8 7/8	527.50	y	02/08/2007	84
4 1/2	5071	6 1/2	457.30	n	02/14/2007	

Tubing Size
2 3/8

Footage
4,908.25

Drillers
Log

<u>Formation Name</u>	<u>Depth Top</u>	<u>Depth Bottom</u>	<u>Formation Thickness</u>
OverBurden	0.00	10.00	10.00
sandstone	10.00	150.00	140.00
Coal	150.00	151.00	1.00
Sandy Shale	151.00	280.00	129.00
Coal	280.00	281.00	1.00
sandstone	281.00	305.00	24.00
Sandy Shale	305.00	350.00	45.00
Coal	350.00	351.00	1.00
Sandy Shale	351.00	390.00	39.00
Coal	390.00	391.00	1.00
sandstone	391.00	475.00	84.00
Sandy Shale	475.00	570.00	95.00
Coal	570.00	571.00	1.00
sandstone	571.00	665.00	94.00
Sandy Shale	665.00	800.00	135.00
Coal	800.00	801.00	1.00
Sandy Shale	801.00	860.00	59.00
sandstone	860.00	1,090.00	230.00
Coal	1,090.00	1,091.00	1.00
sandstone	1,091.00	1,205.00	114.00
Coal	1,205.00	1,206.00	1.00
Sandy Shale	1,206.00	1,390.00	184.00
Coal	1,390.00	1,391.00	1.00
Sandy Shale	1,391.00	1,450.00	59.00
Coal	1,450.00	1,451.00	1.00
sandstone	1,451.00	1,605.00	154.00
Coal	1,605.00	1,606.00	1.00
Sandy Shale	1,606.00	1,840.00	234.00
Coal	1,840.00	1,841.00	1.00
Sandy Shale	1,841.00	1,865.00	24.00
Coal	1,865.00	1,866.00	1.00
sandstone	1,866.00	1,945.00	79.00
Coal	1,945.00	1,946.00	1.00
Sandy Shale	1,946.00	2,040.00	94.00
Coal	2,040.00	2,041.00	1.00
sandstone	2,041.00	2,205.00	164.00
Coal	2,205.00	2,206.00	1.00
Sandy Shale	2,206.00	2,250.00	44.00
sandstone	2,250.00	2,330.00	80.00
Red Rock	2,330.00	2,340.00	10.00
Sandy Shale	2,340.00	2,903.00	563.00
RVCF	2,903.00	2,956.00	53.00
AVIS	2,956.00	3,006.00	50.00
MXTN	3,422.00	3,738.00	316.00
LLIM	3,738.00	3,797.00	59.00
BGLM	3,797.00	4,397.00	600.00

WEIR	4,397.00	4,582.00	185.00
WEIR Sh	4,582.00	4,826.00	244.00
SNBY	4,826.00	4,901.00	75.00
BEREA	4,901.00	4,944.00	43.00
CLEV	4,944.00	5,100.00	156.00