

OIL AND GAS WELL  
SUMMARY REPORT

API No. 45-051-20394-00-03 VDMR Well  
Rep. No. W-6640  
DMQ File No. DI-181

Operator PHILADELPHIA OIL COMPANY  
Farm ARVIL DEEL, ET UX.  
Co. Well No. P-125

County DICKENSON Quadrangle CANEY RIDGE-7½'  
Location (UTM) N4,096,710; E376,510 UTM Zone 17  
(Lat. and Long.) \_\_\_\_\_

Field \_\_\_\_\_ Province APPALACHIAN PLATEAUS  
Elev. (specify) 2715.33' GR. TD 6073' Form. at TD DEVONIAN  
INITIAL FLOW - \_\_\_\_\_ Age DEVONIAN  
Date compl. or abandoned FEBRUARY 23, 1982  
Result GAS WELL  
Gas Shows \_\_\_\_\_  
Gas Pays 5857' TO 5961'; 5225' TO 5241'  
Main Production \_\_\_\_\_ Prod. Form. BEREA AND GREENBRIER  
Age MISSISSIPPIAN

Treatment: THE BEREA FORMATION WAS FRACTURED WITH 75,000 POUNDS OF SAND  
AND 886 BARRELS OF WATER. THE GREENBRIER WAS WATER FRACED WITH 30,000  
POUNDS OF SAND AND 505 BARRELS OF WATER.

Initial Production \_\_\_\_\_  
FINAL FLOW - 203,000 CU. FT.

Oil shows \_\_\_\_\_  
Water FW X at 30' \_\_\_\_\_ at \_\_\_\_\_ at \_\_\_\_\_  
SW X at 2755' \_\_\_\_\_ at \_\_\_\_\_ at \_\_\_\_\_

Coal 110' TO 112'; 154' TO 159'; 195' TO 198'; 483' TO 486'; 673' TO 677';  
1290' TO 1294'; 1551' TO 1555'; 1931' TO 1935'; 2490' TO 2494'; 2644' TO 2648'; 2789' T  
Plat X Plotted X Completion Report X 2793'

Drillers Log X Geologic Log \_\_\_\_\_  
Samples X Interval Sheet X  
Sample Interval \_\_\_\_\_ 0' to 5970'  
Remarks \_\_\_\_\_

Geophysical Logs S.P. \_\_\_\_\_ Res \_\_\_\_\_ Gamma X Neutron \_\_\_\_\_  
Density X Sonic \_\_\_\_\_ Other TEMPERATURE

Stratigraphic Data Source \_\_\_\_\_

<u>Formation</u>	<u>Top</u>	<u>Datum (Subsea)</u>	<u>Thickness</u>
_____	_____	_____	_____
_____	_____	_____	_____
_____	_____	_____	_____
_____	_____	_____	_____
_____	_____	_____	_____
_____	_____	_____	_____
_____	_____	_____	_____
_____	_____	_____	_____
_____	_____	_____	_____
_____	_____	_____	_____

Remarks \_\_\_\_\_  
\_\_\_\_\_  
\_\_\_\_\_  
\_\_\_\_\_  
\_\_\_\_\_

References \_\_\_\_\_  
\_\_\_\_\_  
\_\_\_\_\_  
\_\_\_\_\_

Released to Open File: Completion MAY 24, 1982  
Samples YES

(Note: UTM measurements in meters, all others in feet)

COMMONWEALTH OF VIRGINIA  
DEPARTMENT OF LABOR AND INDUSTRY  
DIVISION OF MINES AND QUARRIES  
BIG STONE GAP, VIRGINIA 24219

NOTICE OF INTENTION TO (DRILL) (REDRILL) (DEEPEN) OIL OR GAS WELL

(One copy of this report and three identical copies of a plat or map, on a scale not smaller than 400 feet to the inch, and showing information required by Section 45.1-114, Code of Virginia, 1950, 1954 and the 1966 Cumulative Supplement, must be submitted to the Division of Mines and Quarries, and copies sent by registered mail to all persons defined in above law, prior to obtaining a permit to drill.)

TO: Division of Mines and Quarries  
Drawer V  
Big Stone Gap, Virginia 24219

Box 431  
Prestonsburg, KY 41653  
Place  
March 3, 1981  
Date

Gentlemen:

The undersigned proposes to begin as soon as a permit therefor is obtained from the Division of Mines and Quarries, to drill, ~~redrill or deepen~~ (strike out two) a well for oil or gas on the Arvil Deel Farm, comprising 87.50 acres, in the Kenady District of Dickenson County, Virginia, having the fee title thereto, or as the case may be, under grant or lease dated Jan. 26, 1976, made by D. Arvil Deel and Rebecca T. Deel to Philadelphia Oil Co. and recorded on the 22 day of March, 1976 in the office of the County Clerk for said County in Book 176 Page 49.

The proposed location of the well, as shown on the attached plat or map, is about 6650 (feet/miles) southeast of Maple Grove Church and about 9500 (feet/miles) south of Rose Cemetary. 11400 ft. south of 37°02'30" 3800 ft. west of 82°22'30"

It is proposed to drill this well to a depth of about 6090 feet. Samples or cutting therefrom will or will not be available for examination by a member of the staff of the Virginia Geological Survey. Cuttings will or will not be furnished the Survey.

A plat or map, in triplicate, on a scale not smaller than 400 feet to the inch, showing the proposed location of the well and other information, required in Section 45.1-114, Code of Virginia, 1950, 1954 and the 1966 Cumulative Supplement is attached hereto. Copies of the plat and notice of intention to drill, redrill or deepen the aforementioned well have been sent to all interested persons as required by Section 45.1-114, above cited, as follows (list names and mail address of each. Use back of sheet if additional space is required):

1. Virginia Iron Coal and Coke Company, Coeburn, Va. 24230 (Coal owner)
2. Betty "B" Coal Company, Box 340, Clintwood, Va. 24228 (Coal lessee)
3. \_\_\_\_\_
4. \_\_\_\_\_
5. \_\_\_\_\_
6. \_\_\_\_\_

Very truly yours,

Signature of officer or certifying party:

Philadelphia Oil Company  
Drilling Company or Operator  
Box 431  
Street Address  
Prestonsburg, KY 41653  
City or Town and State

B. D. Hager  
Name  
B. D. Hager  
-Title- Operating Manager

File D1-181 Date Received April 13, 1981 Well No. P-125

COMMONWEALTH OF VIRGINIA  
DEPARTMENT OF LABOR AND INDUSTRY  
DIVISION OF MINES AND QUARRIES  
BIG TONE GAP, VIRGINIA 24219  
PHONE 703-523-0335

APPLICATION FOR PERMIT TO (DRILL) (REDRILL) (DEEPEN) OIL OR GAS WELL

(Required by Section 45.1-115.1, Code of Virginia, 1950, 1954 and the 1966 Cumulative Supplement. To be accompanied by Permit fee of one hundred dollars and bond and surety therefor, as specified by Section cited. To be submitted in triplicate, one copy to be returned to applicant after action by Division of Mines and Quarries.

TO: Division of Mines and Quarries  
219 Wood Avenue  
Big Stone Gap, Virginia 24219

Box 431  
Prestonsburg, KY 41653

Place

March 3, 1981

Date

Gentlemen:

The undersigned hereby makes application for a Permit to drill, ~~redrill, or deepen~~ (strike out two) a well for oil or gas on the Arvil Deel, Farm, comprising 87.50 acres, in the Kenady District of Dickenson County, Virginia, having the fee title there-  
to or as the case may be, under grant or lease dated Jan. 26, 1976 made by D. Arvil Deel and Rebecca T. Deel to Philadelphia Oil Company

and recorded on the 22 day of March, 1976 in the office of the County Clerk for the said County in Book 176 page 49.

The proposed location of the well is shown on a location plat or map submitted to the Division of Mines and Quarries, by the undersigned, together with Notice of Intention to Drill, Redrill or Deepen a Well for Oil or Gas on the 3 day of March, 1981.

The proposed well will be known as Well No. P-125 of Philadelphia Oil Company (company, etc.) It is proposed to drill this well to a depth of about 6090 feet.

The proposed location is about 665 feet distant from the nearest property or lease line; about 4900 feet distant from the nearest mining opening, or quarry (strike out words not applicable) and/or about 2700 feet distant from the nearest ~~drilling, abandon-~~  
~~ed, producing, or applied for~~ (strike out words not applicable) ~~oil or gas~~ (strike out words not applicable) well.

There is enclosed herewith a certified check or U. S. Postal Money Order, in the amount of one hundred dollars (\$100), payable to the Treasurer of Virginia, covering fee for a Permit to Drill a Well for Oil or Gas, as required by Section 45.1-115.1, Code of Virginia, 1950, 1954 and the 1966 Cumulative Supplement. Bond and Surety therefor to insure compliance with the provisions of Chapter 8, Title 45, Code of Virginia, 1950 and the 1966 Supplement, for this well, in the amount of \$25,000.00 is submitted herewith of (give status of) Blanket Bond covering Well Nos. P-116 through P-140

Correspondence regarding this well should be addressed to Mr. B. D. Hager,  
Box 431, Prestonsburg, KY 41653

Very truly yours,

Signature of officer or certifying party:

B. D. Hager Name Philadelphia Oil Company  
B. D. Hager Title Operating Manager Drilling Company or Operator  
Box 431 Street  
Prestonsburg City or Town  
Kentucky 41653 State

Space below this line is for the use of the Board only.

ACTION OF DIVISION OF MINES AND QUARRIES

Received on March 12, 1981.  
Approved and Permit (no. 394) granted on March 16, 1981  
Reasons for denial \_\_\_\_\_

Division of Mines and Quarries  
By B. J. Fugner State Mine Inspector  
Title

File No. D1-181 Well No. P-125 Permit No. 394

(To be filled in by  
Division of Mines)

COMMONWEALTH OF VIRGINIA  
DEPARTMENT OF LABOR AND INDUSTRY

(To be filled in by  
Division of Mines)

DIVISION OF MINES

BIG STONE GAP, VIRGINIA

DEEPEMED  
OIL AND GAS WELL COMPLETION REPORT  
ABANDONMENT

Well No. \_\_\_\_\_

Permit No. \_\_\_\_\_

County Code \_\_\_\_\_

Well  
Classification \_\_\_\_\_

County \_\_\_\_\_

District \_\_\_\_\_

Quadrangle \_\_\_\_\_

File \_\_\_\_\_

(This report and a copy of electrical log, if made, must  
be submitted to the Division of Mines within 30 days after  
abandonment or completion of well, as required by Section  
45-113, Code of Virginia, 1950.)

Company Philadelphia Oil Company

Address P. O. Box 431  
Prestonsburg, Kentucky 41653

Farm Arvil Deel, Et Ux.

Acres 87.5

County Dickenson

District Kennady

Well No. (Company) P-125

Elevation (ground surface) 2,715.33 ft.

Location: (Give direction and distance in feet from two (2) map coordinates (Latitude and Longitude) shown  
on location plat or map previously filed with the Division of Mines or shown on quadrangle topo-  
graphic map of area.)

3800 feet West of 82° 22' 30" and

14,125 feet South of 37° 02' 30"

Surface of tract is owned in fee simple by Arvil Deel

Address Rt. 4, Box 214, Coeburn, Virginia 24230

Mineral rights are owned by Virginia Iron, Coal & Coke Company

Address Coeburn, Virginia 24230

Location made by B. C. Spradlin

Drilling commenced 6-9-81 Drilling contractor Union Drilling Company

Drilling completed 6-21-81 Address P. O. Drawer 40, Buckhannon, WVA

Well completed as <sup>gas</sup> well on 2-23-82  
<sub>oil</sub>

Well abandoned at - feet on -: Reason \_\_\_\_\_

Well plugged on -, 19     Affidavit filed     , 19    

Total depth 6,073' feet. Steel line measurement      feet.

Commenced producing on not connected to pipeline system 19    

Oil Well

Initial production, \_\_\_\_\_ Barrels per day.

Stimulation Record \_\_\_\_\_

Breakdown Pressure \_\_\_\_\_ psi; Average Injection Pressure \_\_\_\_\_ psi;

Average Injection Rate \_\_\_\_\_ BPM; Instant Shut-in Pressure \_\_\_\_\_ psi;

Min. Shut-in Pressure \_\_\_\_\_ psi;

Final Production \_\_\_\_\_ Barrels per day.

Gravity and grade of oil \_\_\_\_\_

Oil pays at (1) \_\_\_\_\_ feet to \_\_\_\_\_ feet. Oil shows at (1) \_\_\_\_\_ feet to \_\_\_\_\_ feet.

(2) \_\_\_\_\_ feet to \_\_\_\_\_ feet. (2) \_\_\_\_\_ feet to \_\_\_\_\_ feet.

(3) \_\_\_\_\_ feet to \_\_\_\_\_ feet. (3) \_\_\_\_\_ feet to \_\_\_\_\_ feet.

(4) \_\_\_\_\_ feet to \_\_\_\_\_ feet. (4) \_\_\_\_\_ feet to \_\_\_\_\_ feet.

Main production at \_\_\_\_\_ feet to \_\_\_\_\_ feet. (5) \_\_\_\_\_ feet to \_\_\_\_\_ feet.

Caged \_\_\_\_\_ /10ths. Water in \_\_\_\_\_ inch.

\_\_\_\_\_/10ths. Mercury in \_\_\_\_\_ inch.

0 Mcf.; Rock Pressure \_\_\_\_\_ lbs. \_\_\_\_\_ hrs.

Formation Record The Berea Formation was fractured with 75,000 Lbs. of sand and 886 Bbls. of water. The Big Lime was waterfraced with 30,000 Lbs. of Sand and 505 Bbls. of water.

Breakdown Pressure Ber. 1200 B.L. 1100 psi; Average Injection Pressure Ber. 800 B.L. 1100 psi; Average Injection Rate Ber. 30 B.L. 12 BPM; Instant Shut-in Pressure Ber. Vacuum psi; B.L. Vacuum Min. Shut-in Pressure \_\_\_\_\_ psi.

Final Openflow Ber. 119, B.L. 84 Mcf.; Rock Pressure Ber. 500, B.L. 850 lbs. 48 hrs. Gas pays at (1) 5857 feet to 5961 feet. Gas shows at (1) \_\_\_\_\_ feet to \_\_\_\_\_ feet. (2) 5225 feet to 5241 feet. (2) \_\_\_\_\_ feet to \_\_\_\_\_ feet. (3) \_\_\_\_\_ feet to \_\_\_\_\_ feet. (3) \_\_\_\_\_ feet to \_\_\_\_\_ feet. (4) \_\_\_\_\_ feet to \_\_\_\_\_ feet. (4) \_\_\_\_\_ feet to \_\_\_\_\_ feet. Main production \_\_\_\_\_ feet to \_\_\_\_\_ feet. (5) \_\_\_\_\_ feet to \_\_\_\_\_ feet.

Fresh water at (1) 30 feet, 1" stream GPM; (2) \_\_\_\_\_ feet, \_\_\_\_\_ GPM; (3) \_\_\_\_\_ feet, \_\_\_\_\_ GPM. Salt water at (1) 2755 feet; (2) \_\_\_\_\_ feet; (3) \_\_\_\_\_ feet; (4) \_\_\_\_\_ feet. Coal: from See Log feet \_\_\_\_\_ inches to \_\_\_\_\_ feet \_\_\_\_\_ inches; from \_\_\_\_\_ feet \_\_\_\_\_ inches to \_\_\_\_\_ feet \_\_\_\_\_ inches; from \_\_\_\_\_ feet \_\_\_\_\_ inches, to \_\_\_\_\_ feet \_\_\_\_\_ inches.

CASING AND TUBING

PACKERS OR BRIDGE PLUGS

Table with columns for Casing and Tubing (Size, Used in Drilling, Left in Well, Perforated) and Packers or Bridge Plugs (Kind, Size, Set At). Includes rows for 16 inch, 11-3/4, 8-5/8, 4-1/2 inch casing and a 2" liner.

Casing Cemented: 11-3/4 inch. from 714' feet to surface Date 6-12-81; 8-5/8 inch. from 3014' feet to surface Date 6-17-81; 4-1/2 inch. from 6025' feet to 4720' Date 6-22-81

Remarks: (Shut down, depths, dates; fishing jobs, depths, dates; casing; other notes) Fish for tools 9-18-81 to 12-28-81

Samples or cuttings will be available for examination by a member of the Virginia Geological Survey (Yes) (No) Will be furnished the Virginia Geological Survey upon request (Yes) (No) if sacks for same are furnished by the Survey (Yes) (No)

Electrical log made X or not made (check which.) Copy furnished herewith \_\_\_\_\_ or will be submitted on or by \_\_\_\_\_ Previously submitted \_\_\_\_\_, 19 \_\_\_\_\_ Depths Gamma-Density surface-6025 Temperature 3014-6025

To operator requests that information given herein and log or logs be kept confidential for a period of ninety days after completion of the well covered by this report (Yes) (No)

## LOG

Furnished by E.R. Minns Date 4-13-82Compiled by J.R. McCleese Date 4-12-82

GEOLOGIC AGE	FORMATION	GENERAL LITHOLOGY	COLOR	TOP (feet)	BOTTOM (feet)	THICKNESS (feet)	REMARKS OIL, GAS WATER DEPTHS SHUT DOWN FISHING, ETC.
	Fill			0	5	5	
	Shale			5	28	23	
	Sand			28	110	82	Water 30'
	Coal			110	112	2	
	Sand			112	120	8	
	Sand & Shale			120	154	34	
	Coal			154	159	5	
	Sand & Shale			159	195	36	
	Coal			195	198	3	
	Sand & Shale			198	483	285	
	Coal			483	486	3	
	Sand & Shale			486	673	187	
	Coal			673	677	4	
	Sand & Shale			677	1290	613	
	Coal			1290	1294	4	
	Sand & Shale			1294	1350	56	
	Shale			1350	1450	100	
	Sand & Shale			1450	1551	101	
	Coal			1551	1555	4	
	Sand & Shale			1555	1931	376	
	Coal			1931	1935	4	
	Sand & Shale			1935	2260	325	
	Sand			2260	2375	115	
	Sand & Shale			2375	2490	115	
	Coal			2490	2494	2	
	Sand & Shale			2494	2644	150	
	Coal			2644	2648	4	
	Sand & Shale			2648	2789	141	Water 2755'
	Coal			2789	2793	4	
	Sand & Shale			2793	2992	199	
	Red Rock			2992	2997	5	
	Red Rock & Shale			2997	3172	175	
	Ravencliff			3172	3255	83	
	Shale			3255	3528	273	
	Maxon			3528	4385	857	
	Sand & Shale			4385	4588	203	
	Little Lime			4588	4750	162	
	Sand & Shale			4750	4804	54	
	Big Lime			4804	5295	491	
	Keener			5295	5578	283	
	Weir			5578	5810	232	
	Coffee Shale			5810	5846	36	
	Berea			5846	5922	76	
	Brown Shale			5922	6073	151	
	Total Depth			6073			

(To be filled in by  
Division of Mines)

COMMONWEALTH OF VIRGINIA  
DEPARTMENT OF LABOR AND INDUSTRY

(To be filled in by  
Division of Mines)

DIVISION OF MINES

BIG STONE GAP, VIRGINIA

DEEPENED  
OIL AND GAS WELL COMPLETION REPORT  
ABANDONMENT

Well No. \_\_\_\_\_

Permit No. \_\_\_\_\_

County Code \_\_\_\_\_

Well  
Classification \_\_\_\_\_

County \_\_\_\_\_

District \_\_\_\_\_

*Caney Rd*  
Quadrangle

*DZ 181*

File

(This report and a copy of electrical log, if made, must  
be submitted to the Division of Mines within 30 days after  
abandonment or completion of well, as required by Section  
45-113, Code of Virginia, 1950.)

Company Philadelphia Oil Company

Address P. O. Box 431  
Prestonsburg, Kentucky 41653

Farm Arvil Deel, Et Ux.

Acres 87.5

County Dickenson

District Kennady

Well No. (Company) P-125

Elevation (ground surface) 2,715.33 ft.

Location: (Give direction and distance in feet from two (2) map coordinates (Latitude and Longitude) shown  
on location plat or map previously filed with the Division of Mines or shown on quadrangle topo-  
graphic map of area.)

3800 feet West of 82° 22' 30" and

14,125 feet South of 37° 02' 30"

Surface of tract is owned in fee simple by Arvil Deel

Address Rt. 4, Box 214, Coeburn, Virginia 24230

Mineral rights are owned by Virginia Iron, Coal & Coke Company

Address Coeburn, Virginia 24230

Location made by B. C. Spradlin

Drilling commenced 6-9-81 Drilling contractor Union Drilling Company

Drilling completed 6-21-81 Address P. O. Drawer 40, Buckhannon, WVA

Well completed as <sup>gas</sup> well on 2-23-82  
<sub>oil</sub>

Well abandoned at \_\_\_\_\_ feet on \_\_\_\_\_: Reason \_\_\_\_\_

Well plugged on \_\_\_\_\_, 19\_\_\_\_ Affidavit filed \_\_\_\_\_, 19\_\_\_\_

Total depth 6,073' feet. Steel line measurement \_\_\_\_\_ feet.

Commenced producing on not connected to pipeline system 19\_\_\_\_

Oil Well

Initial production, \_\_\_\_\_ Barrels per day.

Stimulation Record \_\_\_\_\_

Breakdown Pressure \_\_\_\_\_ psi; Average Injection Pressure \_\_\_\_\_ psi;

Average Injection Rate \_\_\_\_\_ BPM; Instant Shut-in Pressure \_\_\_\_\_ psi;

Min. Shut-in Pressure \_\_\_\_\_ psi;

Final Production \_\_\_\_\_ Barrels per day.

Gravity and grade of oil \_\_\_\_\_

Oil pays at (1) \_\_\_\_\_ feet to \_\_\_\_\_ feet. Oil shows at (1) \_\_\_\_\_ feet to \_\_\_\_\_ feet.

(2) \_\_\_\_\_ feet to \_\_\_\_\_ feet. (2) \_\_\_\_\_ feet to \_\_\_\_\_ feet.

(3) \_\_\_\_\_ feet to \_\_\_\_\_ feet. (3) \_\_\_\_\_ feet to \_\_\_\_\_ feet.

(4) \_\_\_\_\_ feet to \_\_\_\_\_ feet. (4) \_\_\_\_\_ feet to \_\_\_\_\_ feet.

Main production at \_\_\_\_\_ feet to \_\_\_\_\_ feet. (5) \_\_\_\_\_ feet to \_\_\_\_\_ feet.



Gas Well Gaged \_\_\_\_\_ /10ths. Water in \_\_\_\_\_ inch.  
Initial open flow, gas: \_\_\_\_\_ /10ths. Mercury in \_\_\_\_\_ inch.  
Volume \_\_\_\_\_ 0 Mcf.; Rock Press \_\_\_\_\_ lbs. \_\_\_\_\_ hrs.  
Stimulation Record The Berea Formation was fractured with 75,000 Lbs. of sand and 886 Bbls. of water. The Big Lime was waterfraced with 30,000 Lbs. of Sand and 505 Bbls. of water.

Breakdown Pressure Ber. 1200 B.L. 1100 psi; Average Injection Pressure Ber. 800 B.L. 1100 psi;  
Average Injection Rate Ber. 30 B.L. 12 BPM; Instant Shut-in Pressure Ber- Vacuum psi;  
B.L. Vacuum  
Min. Shut-in Pressure \_\_\_\_\_ psi.

Final Openflow Ber. 119, B.L. 84 Mcf.; Rock Pressure Ber. 500, B.L. 850 lbs. 48 hrs.  
Gas pays at (1) 5857 feet to 5961 feet. Gas shows at (1) \_\_\_\_\_ feet to \_\_\_\_\_ feet.  
(2) 5225 feet to 5241 feet. (2) \_\_\_\_\_ feet to \_\_\_\_\_ feet.  
(3) \_\_\_\_\_ feet to \_\_\_\_\_ feet. (3) \_\_\_\_\_ feet to \_\_\_\_\_ feet.  
(4) \_\_\_\_\_ feet to \_\_\_\_\_ feet. (4) \_\_\_\_\_ feet to \_\_\_\_\_ feet.  
Main production \_\_\_\_\_ feet to \_\_\_\_\_ feet. (5) \_\_\_\_\_ feet to \_\_\_\_\_ feet.

Fresh water at (1) 30 feet, 1" stream GPM; (2) \_\_\_\_\_ feet, \_\_\_\_\_ GPM; (3) \_\_\_\_\_ feet, \_\_\_\_\_ GPM.  
Salt water at (1) 2755 feet; (2) \_\_\_\_\_ feet; (3) \_\_\_\_\_ feet; (4) \_\_\_\_\_ feet.  
Coal: from See Log feet \_\_\_\_\_ inches to \_\_\_\_\_ feet \_\_\_\_\_ inches; from \_\_\_\_\_ feet \_\_\_\_\_ inches to \_\_\_\_\_ feet \_\_\_\_\_ inches; from \_\_\_\_\_ feet \_\_\_\_\_ inches, to \_\_\_\_\_ feet \_\_\_\_\_ inches.

CASING AND TUBING				PACKERS OR BRIDGE PLUGS			
SIZE	USED IN DRILLING	LEFT IN WELL	PERFORATED	KIND	SIZE	SET AT	
(inch)	(feet)	(feet)	(feet) to (feet)				
16 inch	58'	58'		Frac.-Ret.	4-1/2	5820'	
11-3/4	714'	714'					
8-5/8	3,014'	3,014'					
4-1/2	6,025'	6,025'	5849-45				
			5857-66				
			5867-79				
			5922-34				
			5949-61				
			5225-5241				
2"	5,820'	5,820'					
				SIZE	USED IN DRILLING	LEFT IN WELL	PERFORATED
				(inch)	(ft.)	(ft.)	(ft. to ft.)

Casing Cemented: 11-3/4 inch. from 714' feet to surface Date 6-12-81  
8-5/8 inch. from 3014' feet to surface Date 6-17-81  
4-1/2 inch. from 6025' feet to 4720' Date 6-22-81

Remarks: (Shut down, depths, dates; fishing jobs, depths, dates; casing; other notes)  
Fish for tools 9-18-81 to 12-28-81

Samples or cuttings will be available for examination by a member of the Virginia Geological Survey  (Yes)  (No) ~~XXXX~~  
Will be furnished the Virginia Geological Survey upon request  (Yes)  (No) ~~XXXX~~, if sacks for same are furnished by the Survey  (Yes)  (No)

Electrical log made  or not made \_\_\_\_\_ (check which.)  
Copy furnished herewith \_\_\_\_\_ or will be submitted on or by \_\_\_\_\_ Previously submitted \_\_\_\_\_, 19\_\_\_\_  
Depths Gamma-Density surface-6025  
Temperature 3014-6025

To operator requests that information given herein and log or logs be kept confidential for a period of ninety days after completion of the well covered by this report  (Yes)  (No) ~~XXXX~~

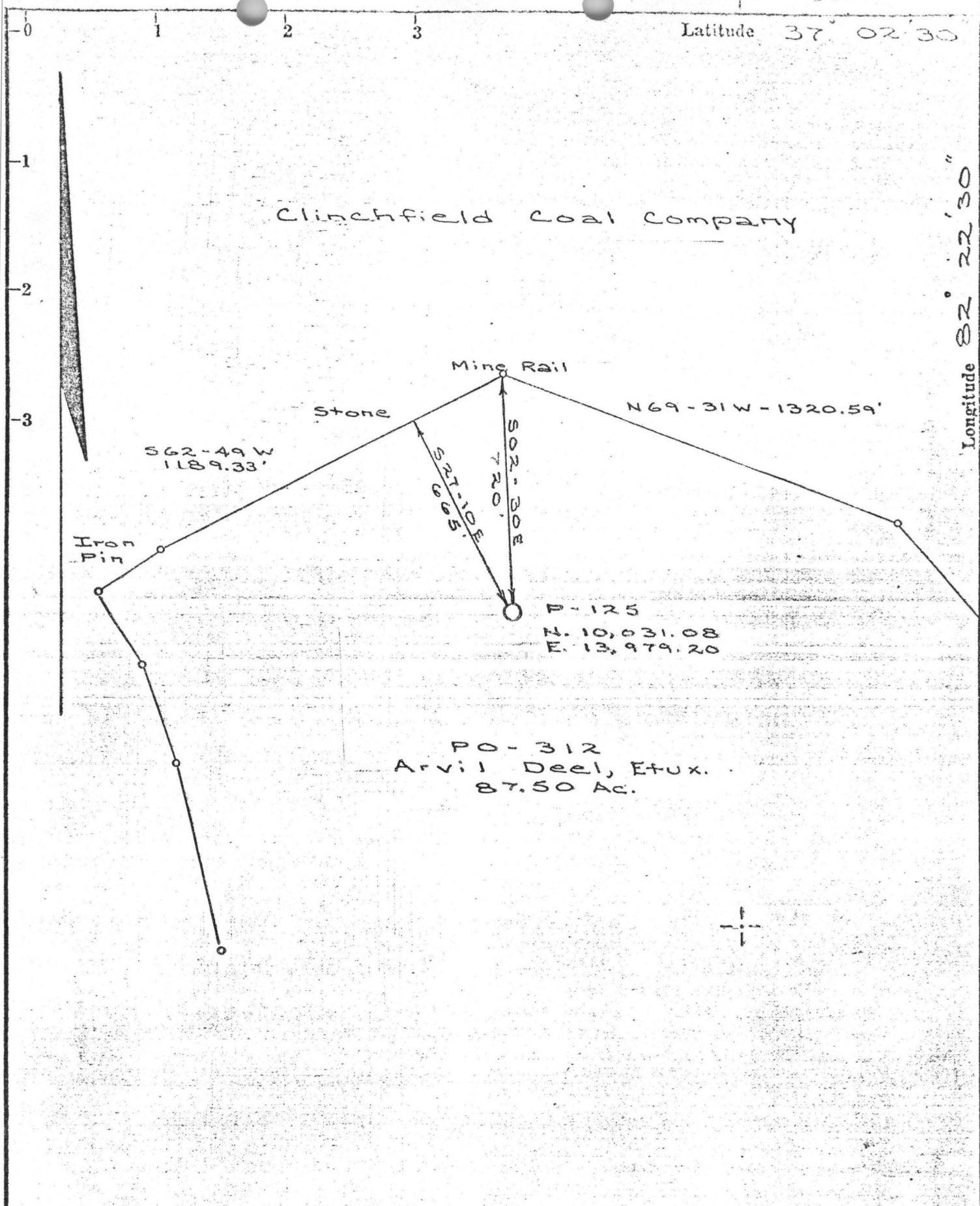
## LOG

Furnished by E.R. Minns Date 4-13-82Compiled by J.R. McCleese Date 4-12-82

GEOLOGIC AGE	FORMATION	GENERAL LITHOLOGY	COLOR	TOP (feet)	BOTTOM (feet)	THICKNESS (feet)	REMARKS OIL, GAS WATER DEPTHS SHUT DOWN FISHING, ETC.
	Fill			0	5	5	
	Shale			5	28	23	
	Sand			28	110	82	Water 30'
	Coal			110	112	2	
	Sand			112	120	8	
	Sand & Shale			120	154	34	
	Coal			154	159	5	
	Sand & Shale			159	195	36	
	Coal			195	198	3	
	Sand & Shale			198	483	285	
	Coal			483	486	3	
	Sand & Shale			486	673	187	
	Coal			673	677	4	
	Sand & Shale			677	1290	613	
	Coal			1290	1294	4	
	Sand & Shale			1294	1350	56	
	Shale			1350	1450	100	
	Sand & Shale			1450	1551	101	
	Coal			1551	1555	4	
	Sand & Shale			1555	1931	376	
	Coal			1931	1935	4	
	Sand & Shale			1935	2260	325	
	Sand			2260	2375	115	
	Sand & Shale			2375	2490	115	
	Coal			2490	2494	2	
	Sand & Shale			2494	2644	150	
	Coal			2644	2648	4	
	Sand & Shale			2648	2789	141	Water 2755'
	Coal			2789	2793	4	
	Sand & Shale			2793	2992	199	
	Red Rock			2992	2997	5	
	Red Rock & Shale			2997	3172	175	
	Ravencliff		-457	3172	3255	83	
	Shale			3255	3528	273	
	Maxon			3528	4385	857	
	Sand & Shale			4385	4588	203	
	Little Lime			4588	4750	162	
	Sand & Shale			4750	4804	54	
	Big Lime			4804	5295	491	
	Keener			5295	5578	283	
	Weir			5578	5810	232	
	Coffee Shale			5810	5846	36	-3131
	Berea			5846	5922	76	
	Brown Shale			5922	6073	151	
	Total Depth			6073			

THIS FORM MUST BE SIGNED BY AUTHORIZED PERSON:

*E. P. Williams*



- New Location.
- Drill Deeper.....
- Abandonment.....

Map No. 12 Block No. 266

Company	Philadelphia Oil Co.
Address	Nora, Va.
Farm	Arvil Deel, Etux.
Tract	Acres 87.50 Lease No. PO-312
Well (Farm) No.	Serial No. P-125
Elevation (Spirit Level)	2715.33'
Quadrangle	Caney Ridge
County	Dickenson District Kenady
Surveyor	B. C. Spradlin
Surveyor Registration No.	782
File No.	Drawing No.
Date	2-18-81 Scale 1" = 400'

COMMONWEALTH OF VIRGINIA  
 DEPARTMENT OF LABOR & INDUSTRY  
 DIVISION OF MINES  
 BIG STONE GAP

**WELL LOCATION MAP**

FILE NO. \_\_\_\_\_

+ Denotes location of well on United States Topographic Maps, scale 1 to 24,000, latitude and longitude lines being represented by border lines as shown.

- Denotes one inch spaces on border line of original tracing.

VIRGINIA DIVISION OF MINERAL RESOURCES  
Box 3667, Charlottesville, VA 22903

INTERVAL SHEET

Page 1 of 2

Date rec'd:                      Date Processed: 6/3/83

PROPERTY: Arvil Decl, et. ux., #P-125

COMPANY: Philadelphia Oil Company

COUNTY: Dickenson

Well Repository No.: W-6640

Sample Interval: from 0 to 5970

Number of samples: 138

Total Depth: 6073'

Oil or Gas: X Water: Exploratory:

From-To	From-To	From-To	From-To	From-To
0 - 30			2690 - 2720	
30 - 60	930 - 960			
	960 - 990			
	1020 - 1050	1890 - 1910		
		1910 - 1940		3710 - 3740
	1050 - 1080		2840 - 2870	3740 - 3770
		1970 - 2000		
210 - 240	1110 - 1140	2000 - 2030		
	1140 - 1170	2030 - 2060		
	1170 - 1200	2060 - 2090		
	1200 - 1230	2090 - 2120		
330 - 360		2120 - 2150		
		2150 - 2180		
	1290 - 1320	2180 - 2210		3980 - 4010
	1320 - 1350	2210 - 2240		
	1350 - 1380	2240 - 2270	3130 - 3160	4040 - 4070
490 - 520	1380 - 1410	2270 - 2300	3160 - 3190	4070 - 4100
		2300 - 2330	3190 - 3220	4100 - 4130
		2330 - 2360	3220 - 3250	4130 - 4160
570 - 600	1470 - 1500	2360 - 2390	3250 - 3280	
		2390 - 2420	3280 - 3320	4190 - 4220
		2420 - 2450	3320 - 3350	4220 - 4250
			3350 - 3380	4250 - 4280
	1590 - 1620	2480 - 2510	3380 - 3410	4280 - 4310
		2510 - 2540	3410 - 3440	4310 - 4340
750 - 780		2540 - 2570		
	1680 - 1710	2570 - 2600	3470 - 3500	4370 - 4400
810 - 840	1710 - 1740	2600 - 2630	3500 - 3530	4400 - 4430
		2630 - 2660	3530 - 3560	4430 - 4460
870 - 900	1770 - 1800	2660 - 2690	3560 - 3590	4460 - 4490

Washed samples

VIRGINIA DIVISION OF MINERAL RESOURCES  
 Box 3667, Charlottesville, VA 22903

INTERVAL SHEET  
 Continued

Page 2 of 2

Well Repository No.: W- 6640

From-To	From-To	From-To	From-To	From-To
4490 - 4520	5030 - 5040	5960 - 5970	-	-
4520 - 4550	5040 - 5050	-	-	-
4550 - 4580	5050 - 5060	-	-	-
<hr/>	5060 - 5070	-	-	-
4610 - 4620	5070 - 5080	-	-	-
4620 - 4630	5080 - 5090	-	-	-
4630 - 4640	5090 - 5100	-	-	-
4640 - 4670	5100 - 5110	-	-	-
4670 - 4700	5110 - 5120	-	-	-
4700 - 4730	5120 - 5130	-	-	-
4730 - 4740	5130 - 5140	-	-	-
<hr/>	5140 - 5150	-	-	-
4750 - 4760	5150 - 5160	-	-	-
<hr/>	5160 - 5170	-	-	-
4770 - 4780	5170 - 5180	-	-	-
4780 - 4790	<hr/>	-	-	-
<hr/>	<hr/>	-	-	-
4800 - 4810	<hr/>	-	-	-
4810 - 4820	<hr/>	-	-	-
<hr/>	skip 680'	-	-	-
4830 - 4840	<hr/>	-	-	-
<hr/>	<hr/>	-	-	-
4850 - 4860	<hr/>	-	-	-
4860 - 4870	<hr/>	-	-	-
4870 - 4880	<hr/>	-	-	-
<hr/>	<hr/>	-	-	-
4880 - 4890	<hr/>	-	-	-
4890 - 4900	<hr/>	-	-	-
4900 - 4910	<hr/>	-	-	-
4910 - 4920	<hr/>	-	-	-
4920 - 4930	<hr/>	-	-	-
4930 - 4940	5860 - 5870	-	-	-
4940 - 4950	<hr/>	-	-	-
4950 - 4960	5880 - 5890	-	-	-
4960 - 4970	5890 - 5900	-	-	-
4970 - 4980	<hr/>	-	-	-
4980 - 4990	5910 - 5920	-	-	-
4990 - 5000	<hr/>	-	-	-
5000 - 5010	<hr/>	-	-	-
5010 - 5020	5940 - 5950	-	-	-
<hr/>	5950 - 5960	-	-	-

Washed samples