



Commonwealth of Virginia
 Department of Mines, Minerals, and Energy
 Division of Gas and Oil
 P.O. Box 1416; Abingdon, VA 24212
 Telephone: (276) 676-5423

Tracking Number: 806
 Company: CNX Gas Company LLC
 File Number: BU-3484
 Operations Name: CBM E14 W/PL
 Operation Type: Coalbed/Pipeline
 Drilling Report Type: Original

DRILLING REPORT (DGO-GO-14)

1. Drilling Data

Date drilling commenced: 6/12/2007 Drilling Contractor: Noah Horn
 Date drilling completed: 6/15/2007 Rig Type: Rotary Cable Tool
 Driller's Total Depth (feet): 2,350
 Log Total Depth (feet): 2,321 Coal Seam At Total Depth Pocahontas

2. Final Location Plat (as required by 4 VAC25-150-360.C.)

Permitted State Plane X 970,243 Final Plat State Plane X: 970,245
 Permitted State Plane Y: 359,736 Final Plat State Plane Y: 359,731

Plat Previously Submitted Or...

List of Attached Items:

Description	FileName
Plat	E14 Plat.pdf

3. Geological Data

Fresh Water At:

Depth (in feet)	Rate	Unit of Measure
1,630	Damp	GPM

Salt Water At:

Depth (in feet)	Rate	Unit of Measure
-----------------	------	-----------------

Coal Seams

List of Attached Items:

Description	FileName
Exhibit A	E14 Exhibit A.pdf

Gas and Oil Shows

List of Attached Items:

Description	FileName
Gash Show	E14 Gas Show.xls

4. Electric Logs (As required by 4VAC25-150-280.A.)

List all logs run: Caliper Gamma Density Temp Deviation

Did logs disclose vertical locations of a coal seam? Yes No

5. Survey Results (As required by 4VAC25-150-280.B.2)

List of Attached Items:

Description	FileName
Deviation	E14 Deviation.pdf

6. Casing and Tubing Program

List of Attached Items:

Description	FileName
Casing	E14 Casing.xls

7. Remarks

Use this space to note any conditions or occurrences, such as lost circulation, fishing jobs, junk left in hole, sidetracks, squeeze jobs, etc., not shown above. Include data and depth of condition/occurrence.

7" Casing cemented on the backside to surface; Void @ 622'

8. Drillers Log

Compiled By: Noah Horn

List of Attached Items:

Description	FileName
Drill Data	E14 Drill Data.pdf

9. Comments

10. Signature

Permitee: CNX Gas Company LLC Date: 11/3/2007 (Company)

Signed By: Leslie K Arrington Title: Manager (Signature)

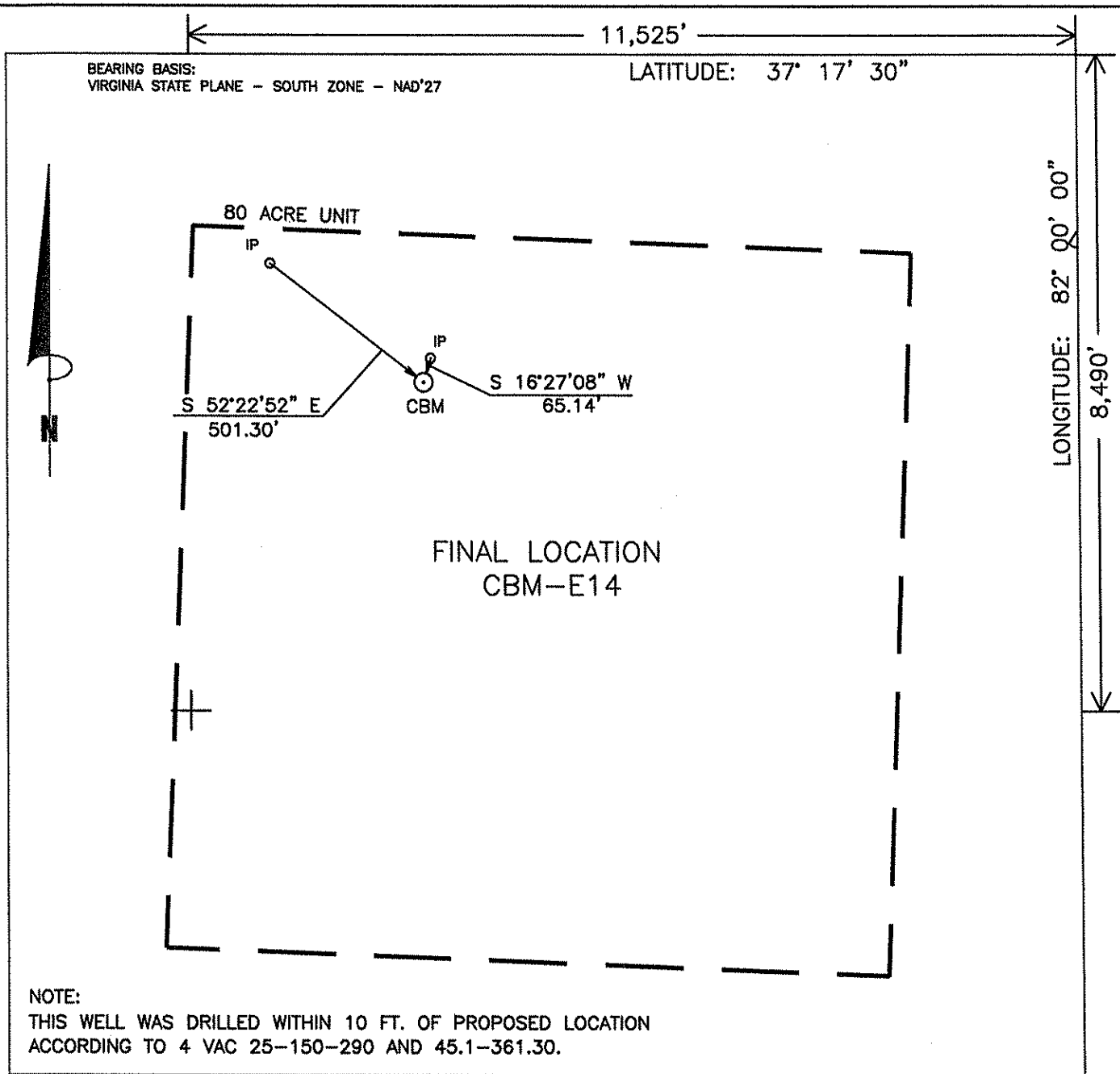
INTERNAL USE ONLY

Submit Date: 11/3/2007

Status: Inspr Approved

Date: 11/8/2007

Final PDF Date: 11/13/2007



NOTE:
 THIS WELL WAS DRILLED WITHIN 10 FT. OF PROPOSED LOCATION
 ACCORDING TO 4 VAC 25-150-290 AND 45.1-361.30.

WELL LOCATION PLAT

E14FNL
 1N9/40 - 0401/35

COMPANY CNX GAS COMPANY, LLC. WELL NAME OR NUMBER CBM-E14
 TRACT NUMBER YUKON POCAHONTAS COAL CO ET AL QUADRANGLE GRUNDY
 DISTRICT: SOUTH GRUNDY
 WELL COORDINATES (VIRGINIA STATE PLANE): STATE PLANE: N 359,731.11 E 970,244.57
 ELEVATION: 2286.51' METHOD USED TO DETERMINE ELEVATION: BY TRIG. LEVELS FROM CONSOL INC BM'S
 COUNTY BUCHANAN Scale: 1" = 400' Date 06-14-07
 THIS PLAT IS A NEW PLAT ; AN UPDATED PLAT ; OR A FINAL LOCATION PLAT

+ Denotes the location of a well on United States Topographic Maps, scale 1 to 24,000, latitude and longitude lines being represented by border lines as shown (optional).

Danny R. Price

DANNY R. PRICE
 Lic. No. 008540

Licensed Professional Engineer or Licensed Land Surveyor (Affix Seal)

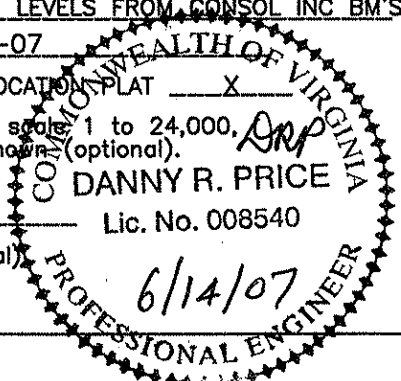


Exhibit A

Well Name: 07 CBM E14

SURFACE ELEV: 2286.51 EASTING: 970244.57 NORTHING: 359731.11

SEAM	DEPTH FROM (FT)	DEPTH TO (FT)	ELEVATION (TOSE)	THK. (FT)	REMARKS
HG1	159.70	161.30	2126.81	1.60	
	161.30	185.70	2125.21	24.40	
COAL	185.70	185.90	2100.81	0.20	
	185.90	268.20	2100.61	82.30	
SD1	268.20	269.90	2018.31	1.70	
	269.90	300.70	2016.61	30.80	
SD3	300.70	301.10	1985.81	0.40	
	301.10	431.70	1985.41	130.60	
LB1	431.70	432.70	1854.81	1.00	
	432.70	493.40	1853.81	60.70	
LB2	493.40	493.60	1793.11	0.20	
	493.60	625.10	1792.91	131.50	
KN2	625.10	626.90	1661.41	1.80	MINED OUT
	626.90	748.20	1659.61	121.30	
AL2	748.20	750.00	1538.31	1.80	
	750.00	771.40	1536.51	21.40	
COAL	771.40	771.80	1515.11	0.40	
	771.80	813.80	1514.71	42.00	
RA2	813.80	815.20	1472.71	1.40	
	815.20	926.20	1471.31	111.00	
JB1	926.20	927.80	1360.31	1.60	
	927.80	949.30	1358.71	21.50	
JB3	949.30	950.30	1337.21	1.00	
	950.30	1018.70	1336.21	68.40	
TI	1018.70	1018.90	1267.81	0.20	
	1018.90	1132.90	1267.61	114.00	
*US1	1132.90	1133.70	1153.61	0.80	
	1133.70	1250.10	1152.81	116.40	
*GC2	1250.10	1250.60	1036.41	0.50	
	1250.60	1322.10	1035.91	71.50	
*SE2	1322.10	1322.60	964.41	0.50	
	1322.60	1356.80	963.91	34.20	
*LS1	1356.80	1357.80	929.71	1.00	
	1357.80	1433.70	928.71	75.90	
*UH1	1433.70	1434.10	852.81	0.40	
	1434.10	1502.10	852.41	68.00	
*MH1	1502.10	1503.10	784.41	1.00	
	1503.10	1618.90	783.41	115.80	
*P10	1618.90	1621.80	667.61	2.90	
	1621.80	1665.80	664.71	44.00	
*LH3	1665.80	1667.20	620.71	1.40	
	1667.20	1707.30	619.31	40.10	
*P91	1707.30	1708.20	579.21	0.90	
	1708.20	1763.90	578.31	55.70	
*COAL	1763.90	1765.30	522.61	1.40	
	1765.30	1954.60	521.21	189.30	
*P52	1954.60	1954.90	331.91	0.30	

	1954.90	2077.90	331.61	123.00
*P3	2077.90	2081.80	208.61	3.90
	2081.80	2117.50	204.71	35.70
*P21	2117.50	2117.70	169.01	0.20
	2117.70	2123.00	168.81	5.30
*P22	2123.00	2123.20	163.51	0.20
	2123.20	2350.00	163.31	226.80

COAL SEAMS TO BE STIMULATED WERE ADJUSTED DUE TO THE GAS WELL'S PROXIMITY TO HOBBS BRANCH.

GAMMA-CALIPER LOG FROM 0 TO 760.00

GAMMA-DENSITY LOG FROM 760.00 TO TD.

NOTE: FOOTAGE NOT ADJUSTED FOR DEVIATION

FILE: H:\JIMHAZ~1\PROJECTS\GAS\E14.CMP

DATE: 06/29/07

Well: E14

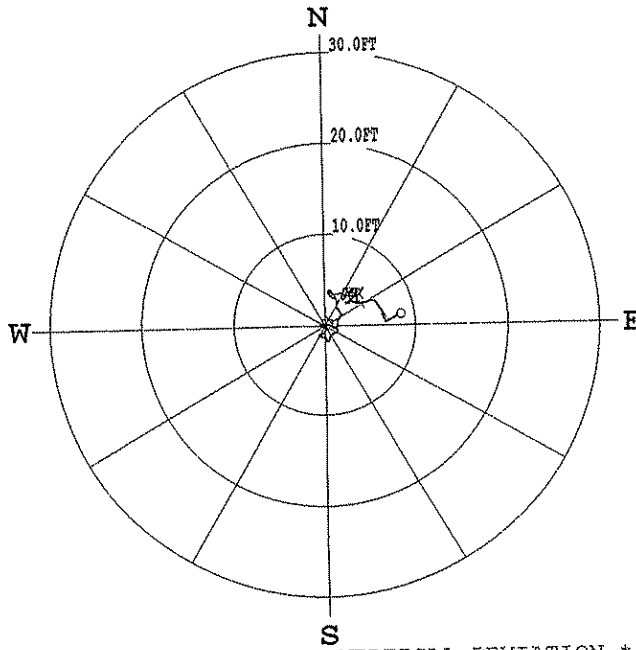
Oil & Gas Show

Formation	Top	Bottom	Thickness	IPF (MCFD/BOPD)	Pressure	Hours Tested
Lee/Norton	1357	1667	310			
Pocahontas	1764	2082	318			
Total IPF				168.0 4 1/2 orifice		

CLIENT: Consol Energy
 LOCATION:
 HOLE ID: 07-CNX-E-14
 DATE OF LOG: 06/15/07
 PROBE: 9136CA 962



SCALE: 10 FT/IN
 TRUE DEPTH: 2312.36 FT
 AZIMUTH: 82.0
 DISTANCE: 8.5 FT
 + = 300 FT INCR
 O = BOTTOM OF HOLE



* * * * * COMPU-LOG - VERTICAL DEVIATION * * * * *

CLIENT : Consol Energy HOLE ID. : 07-CNX-E-14
 FIELD OFFICE : DATE OF LOG : 06/15/07
 DATA FROM : PROBE : 9136CA , 962
 MAG. DECL. : -6.900 DEPTH UNITS : FEET
 LOG: 07-CNX-E-14_06-15-07_07-58_9136CA_.02_-0.02_2312.86_DEVI.log

CABLE DEPTH	TRUE DEPTH	NORTH DEV.	EAST DEV.	DISTANCE	AZIMUTH	SANG	SANGB
50.0	49.98	-0.08	-0.23	0.2	252.0	1.8	286.1
60.0	59.97	0.03	-0.54	0.5	273.3	2.0	247.0
70.0	69.97	-0.14	-0.43	0.4	252.3	1.3	111.3
80.0	79.97	-0.15	-0.21	0.3	234.4	1.4	143.8
90.0	89.96	-0.23	-0.01	0.2	183.7	1.3	120.9
100.0	99.96	-0.36	0.14	0.4	159.2	1.4	132.9
110.0	109.95	-0.63	0.03	0.6	177.2	1.9	227.2
120.0	119.95	-0.86	-0.22	0.9	194.1	2.1	233.6
130.0	129.94	-1.01	-0.53	1.1	207.9	2.1	249.9
140.0	139.94	-1.16	-0.52	1.3	204.2	1.5	152.4
150.0	149.94	-1.28	-0.32	1.3	194.2	1.3	121.8
160.0	159.93	-1.35	-0.10	1.4	184.4	1.4	129.9
170.0	169.93	-1.45	0.10	1.5	175.9	1.3	135.2
180.0	179.93	-1.66	0.21	1.7	172.6	1.2	122.6
190.0	189.92	-1.71	0.41	1.8	166.4	1.6	39.6
200.0	199.92	-1.41	0.49	1.5	161.0	1.9	353.7
210.0	209.92	-1.15	0.61	1.3	152.0	1.7	28.7
220.0	219.91	-0.98	0.83	1.3	139.7	1.6	53.9
230.0	229.91	-0.83	1.05	1.3	128.2	1.4	103.4
240.0	239.90	-0.76	1.31	1.5	120.1	1.7	51.9
250.0	249.90	-0.48	1.33	1.4	109.8	2.0	314.7
260.0	259.89	-0.33	1.05	1.1	107.2	1.9	298.6
270.0	269.89	-0.03	0.87	0.9	92.1	2.1	348.7
280.0	279.88	0.30	0.81	0.9	69.8	1.9	358.0
290.0	289.87	0.61	0.70	0.9	49.1	2.0	297.3
300.0	299.87	0.61	0.40	0.7	33.0	1.9	276.6
310.0	309.86	0.63	0.10	0.6	9.2	1.6	242.3
320.0	319.86	0.63	-0.20	0.7	342.9	1.8	274.9
330.0	329.86	0.52	-0.34	0.6	326.6	1.2	149.8
340.0	339.85	0.32	-0.25	0.4	321.8	1.2	153.3
350.0	349.85	0.13	-0.14	0.2	312.5	1.3	163.7
360.0	359.85	-0.06	-0.03	0.1	209.6	1.3	131.1
370.0	369.84	0.00	0.23	0.2	89.2	1.8	83.4
380.0	379.84	-0.01	0.52	0.5	90.9	1.8	88.1
390.0	389.84	-0.11	0.78	0.8	97.7	1.5	136.6

380.0	379.84	-0.01	0.52	0.5	90.9	1.8	88.
390.0	389.84	-0.11	0.78	0.8	97.7	1.5	136.
400.0	399.83	-0.28	0.97	1.0	106.4	1.7	108.
410.0	409.83	-0.32	1.26	1.3	104.1	2.0	61.
420.0	419.82	-0.00	1.40	1.4	90.2	2.0	350.
430.0	429.81	0.34	1.43	1.5	76.6	1.8	340.
440.0	439.81	0.65	1.53	1.7	66.9	2.1	25.
450.0	449.80	0.95	1.73	2.0	61.3	2.1	46.
460.0	459.80	1.19	1.88	2.2	57.6	1.6	293.
470.0	469.79	1.41	1.67	2.2	49.8	1.8	325.
480.0	479.79	1.68	1.50	2.2	41.7	1.9	334.
490.0	489.78	1.89	1.27	2.3	34.0	1.9	339.
500.0	499.77	2.22	1.30	2.6	30.4	2.1	33.
510.0	509.77	2.51	1.36	2.9	28.5	1.9	335.
520.0	519.76	2.83	1.30	3.1	24.7	1.9	338.
530.0	529.76	2.96	1.06	3.1	19.7	1.6	282.
540.0	539.76	3.07	0.80	3.2	14.6	1.8	318.
550.0	549.75	3.30	0.61	3.4	10.4	1.7	310.
560.0	559.75	3.54	0.44	3.6	7.1	1.8	321.
570.0	569.74	3.82	0.42	3.8	6.2	1.8	47.
580.0	579.74	3.73	0.55	3.8	8.3	1.7	134.
590.0	589.73	3.53	0.78	3.6	12.4	1.7	133.
600.0	599.73	3.35	1.00	3.5	16.6	2.0	85.
610.0	609.72	3.40	1.33	3.6	21.3	2.0	50.
620.0	619.71	3.51	1.66	3.9	25.3	2.1	81.
630.0	629.71	3.41	1.92	3.9	29.4	1.8	199.
640.0	639.70	3.23	2.18	3.9	34.0	1.8	130.
650.0	649.70	3.00	2.26	3.8	36.9	1.4	219.
660.0	659.70	2.87	2.05	3.5	35.6	1.5	243.
670.0	669.69	3.03	1.89	3.6	32.0	2.0	9.
680.0	679.69	3.37	1.91	3.9	29.6	1.9	9.
690.0	689.68	3.66	2.07	4.2	29.5	1.9	14.
700.0	699.67	3.96	2.20	4.5	29.1	1.9	59.
710.0	709.67	4.05	2.50	4.8	31.7	1.9	132.
720.0	719.66	3.75	2.47	4.5	33.3	1.9	163.
730.0	729.66	3.46	2.45	4.2	35.3	1.8	219.
740.0	739.66	3.31	2.32	4.0	35.1	0.9	241.
750.0	749.65	3.23	2.29	4.0	35.4	0.9	321.
760.0	759.65	3.25	2.32	4.0	35.6	1.3	270.
770.0	769.65	3.26	2.22	3.9	34.3	0.7	59.
780.0	779.65	3.28	2.36	4.0	35.7	2.2	81.
790.0	789.64	3.24	2.62	4.2	39.0	1.6	92.
800.0	799.64	3.21	2.86	4.3	41.7	1.3	99.
810.0	809.64	3.19	3.11	4.4	44.3	1.4	96.
820.0	819.64	3.13	3.33	4.6	46.8	1.3	97.
830.0	829.63	3.24	3.52	4.8	47.3	1.4	114.
840.0	839.63	3.34	3.47	4.8	46.1	1.1	352.
850.0	849.63	3.42	3.50	4.9	45.7	0.8	10.
860.0	859.63	3.52	3.43	4.9	44.2	0.4	258.
870.0	869.63	3.45	3.39	4.8	44.5	0.5	212.
880.0	879.63	3.37	3.36	4.8	44.9	0.6	204.
890.0	889.63	3.27	3.31	4.7	45.4	0.6	205.
900.0	899.63	3.18	3.26	4.6	45.8	0.6	207.
910.0	909.63	3.08	3.21	4.5	46.1	0.6	211.
920.0	919.62	3.00	3.14	4.3	46.3	0.7	226.
930.0	929.62	2.93	3.05	4.2	46.1	0.8	211.
940.0	939.62	2.84	2.98	4.1	46.3	0.7	242.
950.0	949.62	2.77	2.91	4.0	46.5	0.6	216.
960.0	959.62	2.70	2.81	3.9	46.2	0.6	230.
970.0	969.62	2.62	2.74	3.8	46.2	0.7	229.
980.0	979.62	2.56	2.64	3.7	46.0	0.6	230.
990.0	989.62	2.49	2.56	3.6	45.8	0.6	238.
1000.0	999.62	2.43	2.47	3.5	45.5	0.7	223.
1010.0	1009.62	2.37	2.39	3.4	45.2	0.6	251.
1020.0	1019.62	2.42	2.31	3.3	43.7	0.7	354.
1030.0	1029.62	2.42	2.40	3.4	44.7	1.0	112.
1040.0	1039.62	2.39	2.57	3.5	47.1	0.9	89.
1050.0	1049.61	2.50	2.70	3.7	47.2	1.1	19.
1060.0	1059.61	2.56	2.84	3.8	48.1	0.9	77.
1070.0	1069.61	2.57	3.02	4.0	49.6	1.1	81.
1080.0	1079.61	2.55	3.20	4.1	51.5	1.1	85.
1090.0	1089.61	2.56	3.39	4.2	52.9	1.4	90.
1100.0	1099.61	2.56	3.59	4.4	54.5	1.2	92.
1110.0	1109.60	2.48	3.67	4.4	55.9	1.3	330.

1110.0	1109.60	2.48	3.67	4.4	53.9	1.5	330.8
1120.0	1119.60	2.61	3.58	4.4	53.9	0.8	7.3
1130.0	1129.60	2.73	3.58	4.5	52.7	0.8	15.6
1140.0	1139.60	2.83	3.54	4.5	51.3	0.5	305.1
1150.0	1149.60	2.87	3.49	4.5	50.5	0.4	320.7
1160.0	1159.60	2.96	3.49	4.6	49.8	0.7	356.4
1170.0	1169.60	3.08	3.52	4.7	48.8	0.8	3.1
1180.0	1179.60	3.21	3.55	4.8	48.0	0.8	61.6
1190.0	1189.60	3.27	3.67	4.9	48.3	1.4	33.0
1200.0	1199.60	3.40	3.82	5.1	48.3	1.2	36.7
1210.0	1209.59	3.56	3.92	5.3	47.8	1.0	32.3
1220.0	1219.59	3.69	4.02	5.5	47.5	0.9	34.4
1230.0	1229.59	3.83	4.10	5.6	47.0	0.9	36.1
1240.0	1239.59	3.94	4.20	5.8	46.9	0.9	52.8
1250.0	1249.59	3.99	4.20	5.8	46.5	0.9	205.1
1260.0	1259.59	3.88	4.14	5.7	46.8	0.5	210.8
1270.0	1269.59	3.83	4.06	5.6	46.7	0.5	305.2
1280.0	1279.59	3.87	3.96	5.5	45.6	0.8	287.2
1290.0	1289.59	3.91	3.84	5.5	44.5	0.6	306.2
1300.0	1299.58	3.97	3.74	5.5	43.2	0.8	277.6
1310.0	1309.58	3.99	3.61	5.4	42.1	0.6	261.9
1320.0	1319.58	4.01	3.49	5.3	41.0	0.7	281.7
1330.0	1329.58	4.02	3.36	5.2	39.9	0.7	265.9
1340.0	1339.58	4.00	3.24	5.1	39.0	0.7	266.3
1350.0	1349.58	4.00	3.12	5.1	37.9	0.7	248.4
1360.0	1359.58	3.93	3.02	5.0	37.5	0.5	230.0
1370.0	1369.58	3.86	2.96	4.9	37.5	0.6	221.4
1380.0	1379.58	3.82	2.91	4.8	37.3	0.5	227.0
1390.0	1389.58	3.75	2.83	4.7	37.0	0.5	239.3
1400.0	1399.58	3.73	2.77	4.6	36.6	0.5	223.7
1410.0	1409.58	3.65	2.73	4.6	36.8	0.1	217.4
1420.0	1419.58	3.62	2.71	4.5	36.8	0.4	227.9
1430.0	1429.58	3.59	2.62	4.4	36.1	0.7	191.2
1440.0	1439.58	3.51	2.67	4.4	37.2	0.5	65.7
1450.0	1449.58	3.52	2.76	4.5	38.1	0.5	92.8
1460.0	1459.58	3.52	2.85	4.5	39.0	0.6	80.6
1470.0	1469.58	3.52	2.95	4.6	40.0	0.6	93.4
1480.0	1479.57	3.53	3.05	4.7	40.8	0.5	68.8
1490.0	1489.57	3.53	3.15	4.7	41.7	0.7	92.2
1500.0	1499.57	3.53	3.24	4.8	42.6	0.4	75.3
1510.0	1509.57	3.53	3.35	4.9	43.5	0.7	93.8
1520.0	1519.57	3.51	3.47	4.9	44.7	0.7	102.8
1530.0	1529.57	3.57	3.57	5.0	45.0	0.8	22.8
1540.0	1539.57	3.69	3.52	5.1	43.6	0.8	314.4
1550.0	1549.57	3.76	3.41	5.1	42.2	0.8	296.0
1560.0	1559.57	3.80	3.28	5.0	40.8	0.7	274.5
1570.0	1569.57	3.79	3.15	4.9	39.7	0.7	227.5
1580.0	1579.57	3.68	3.10	4.8	40.1	0.7	204.4
1590.0	1589.57	3.57	3.02	4.7	40.2	0.7	230.2
1600.0	1599.56	3.51	2.90	4.6	39.5	0.8	254.3
1610.0	1609.56	3.46	2.77	4.4	38.7	0.8	241.0
1620.0	1619.56	3.37	2.69	4.3	38.6	0.9	184.9
1630.0	1629.56	3.23	2.69	4.2	39.8	0.7	159.2
1640.0	1639.56	3.10	2.71	4.1	41.2	0.6	175.4
1650.0	1649.56	2.98	2.76	4.1	42.8	0.7	183.2
1660.0	1659.56	2.87	2.79	4.0	44.1	0.6	198.3
1670.0	1669.56	2.76	2.80	3.9	45.4	0.6	185.2
1680.0	1679.56	2.67	2.86	3.9	47.0	0.6	136.3
1690.0	1689.56	2.62	2.97	4.0	48.5	0.7	96.9
1700.0	1699.56	2.56	3.05	4.0	49.9	0.7	113.3
1710.0	1709.56	2.52	3.14	4.0	51.2	0.5	125.7
1720.0	1719.56	2.49	3.23	4.1	52.4	0.5	104.0
1730.0	1729.56	2.47	3.32	4.1	53.3	0.5	91.8
1740.0	1739.55	2.46	3.42	4.2	54.3	0.5	88.6
1750.0	1749.55	2.44	3.50	4.3	55.2	0.5	110.6
1760.0	1759.55	2.43	3.59	4.3	55.9	0.5	82.3
1770.0	1769.55	2.43	3.68	4.4	56.6	0.8	79.1
1780.0	1779.55	2.43	3.78	4.5	57.2	0.7	79.1
1790.0	1789.55	2.43	3.87	4.6	57.8	0.5	98.1
1800.0	1799.55	2.44	3.96	4.7	58.4	0.5	105.2
1810.0	1809.55	2.44	4.05	4.7	58.9	0.5	84.8
1820.0	1819.55	2.45	4.13	4.8	59.3	0.6	80.7
1830.0	1829.55	2.45	4.21	4.9	59.8	0.1	38.6
1840.0	1839.55	2.47	4.30	5.0	60.1	0.6	79.0

1840.0	1839.55	2.47	4.30	5.0	60.1	0.6	79.0
1850.0	1849.55	2.49	4.40	5.1	60.4	0.7	79.7
1860.0	1859.55	2.52	4.49	5.1	60.7	0.6	78.7
1870.0	1869.55	2.53	4.59	5.2	61.2	0.8	66.4
1880.0	1879.55	2.56	4.70	5.4	61.4	0.7	74.0
1890.0	1889.55	2.59	4.80	5.5	61.6	0.7	74.3
1900.0	1899.55	2.63	4.91	5.6	61.9	0.6	77.0
1910.0	1909.55	2.64	5.01	5.7	62.2	0.6	102.5
1920.0	1919.55	2.64	5.11	5.8	62.7	0.5	78.5
1930.0	1929.55	2.65	5.22	5.9	63.1	0.5	83.7
1940.0	1939.54	2.66	5.32	5.9	63.5	0.5	97.5
1950.0	1949.54	2.67	5.43	6.1	63.8	0.8	99.9
1960.0	1959.54	2.66	5.52	6.1	64.3	0.7	137.7
1970.0	1969.54	2.55	5.58	6.1	65.4	0.6	131.0
1980.0	1979.54	2.48	5.65	6.2	66.3	0.6	133.1
1990.0	1989.54	2.41	5.70	6.2	67.1	0.6	150.6
2000.0	1999.54	2.33	5.76	6.2	67.9	0.6	136.0
2010.0	2009.54	2.25	5.81	6.2	68.9	0.6	139.9
2020.0	2019.54	2.16	5.86	6.2	69.8	0.4	156.4
2030.0	2029.54	2.07	5.92	6.3	70.7	0.6	162.6
2040.0	2039.54	1.98	5.97	6.3	71.7	0.5	161.9
2050.0	2049.54	1.90	6.04	6.3	72.5	0.5	114.8
2060.0	2059.54	1.79	6.10	6.4	73.6	0.9	147.2
2070.0	2069.54	1.71	6.17	6.4	74.5	0.7	137.6
2080.0	2079.54	1.60	6.24	6.4	75.6	1.0	158.3
2090.0	2089.53	1.50	6.31	6.5	76.6	0.7	147.2
2100.0	2099.53	1.40	6.39	6.5	77.6	0.7	136.1
2110.0	2109.53	1.32	6.39	6.5	78.3	1.2	212.1
2120.0	2119.53	1.29	6.37	6.5	78.6	0.6	179.4
2130.0	2129.53	1.17	6.34	6.4	79.5	0.6	144.4
2140.0	2139.53	1.08	6.39	6.5	80.4	0.6	160.8
2150.0	2149.53	0.97	6.44	6.5	81.4	0.6	141.7
2160.0	2159.53	0.88	6.48	6.5	82.2	0.6	153.4
2170.0	2169.53	0.79	6.53	6.6	83.1	0.5	161.5
2180.0	2179.53	0.70	6.57	6.6	83.9	0.6	154.7
2190.0	2189.53	0.61	6.61	6.6	84.7	0.6	162.3
2200.0	2199.53	0.53	6.65	6.7	85.5	0.6	184.3
2210.0	2209.53	0.45	6.67	6.7	86.1	0.6	149.1
2220.0	2219.53	0.37	6.68	6.7	86.8	0.5	175.6
2230.0	2229.53	0.34	6.64	6.7	87.0	0.2	341.4
2240.0	2239.53	0.42	6.71	6.7	86.4	1.0	107.3
2250.0	2249.52	0.45	6.92	6.9	86.2	1.5	69.3
2260.0	2259.52	0.57	7.16	7.2	85.4	1.6	63.1
2270.0	2269.52	0.70	7.40	7.4	84.6	1.6	69.5
2280.0	2279.51	0.79	7.64	7.7	84.1	1.4	67.0
2290.0	2289.51	0.93	7.86	7.9	83.3	1.6	69.2
2300.0	2299.51	1.02	8.09	8.2	82.8	1.4	57.4
2310.0	2309.50	1.15	8.32	8.4	82.2	1.4	70.6
2312.9	2312.36	1.18	8.38	8.5	81.9	1.4	56.5

DRILL DATA HOLE-NOAH HORN WELL DRILLING, INC

COMPANY: CNX

HOLE #: E-14

LOCATION: DISMAL

DRILL RIG #: 90

DATE STARTED: 06-12-07

DATED COMPLETED: 06-15-07

ELECTRIC LOGGED: YES

GROUTED: YES

DEPTH		THICKNESS	STRATA	REMARKS
FROM	TO	FT	DESCRIPTION, VOIDS ETC	
0	25	25	OVERBURDEN	
25	30	5	SHALE	
30	60	30	SAND/SHALE	
60	90	30	SAND	
90	120	30	SAND/SHALE	
120	180	60	SHALE/COAL/SHALE	
180	210	30	SHALE/SAND	
210	300	90	SAND/SHALE	
300	330	30	SHALE/COAL/SHALE	
330	360	30	SAND/SHALE/COAL	
360	420	60	SAND/SHALE	
420	450	30	SAND/SHALE/COAL	
450	480	30	SAND/SHALE	
480	510	30	SAND/SHALE/COAL	
510	622	112	SAND/SHALE	
622	630	8	VOID	
630	720	90	SAND/SHALE	
720	750	30	SAND/SHALE/COAL	
750	770	20	SAND	
770	790	20	SAND/SHALE	
790	820	30	SAND/SHALE	
820	850	30	SAND/SHALE/COAL	
850	880	30	SAND/SHALE	
880	940	60	SAND/SHALE/COAL	
940	1000	60	SAND/SHALE	
1000	1030	30	SAND/SHALE/COAL	
1030	1120	90	SAND/SHALE	
1120	1150	30	SAND/SHALE/COAL	
1150	1210	60	SAND/SHALE	
1210	1270	60	SAND	
1270	1300	30	SAND/SHALE/COAL	
1300	1360	60	SAND/SHALE	
1360	1420	60	SAND	
1420	1450	30	SAND/SHALE	
1450	1480	30	SAND	
1480	1540	60	SAND/SHALE	
1540	1630	90	SAND	
1630	1660	30	SAND/SHALE	
1660	1690	30	SHALE/COAL/SHALE	
1690	1720	30	SAND/SHALE	
1720	1750	30	SHALE/COAL/SAND	

1750	1780	30	SAND/SHALE
1780	1810	30	SAND
1810	1840	30	SAND/SHALE/COAL/SHALE
1840	1870	30	SAND/SHALE
1870	1960	90	SAND
1960	1990	30	SAND/SHALE
1990	2080	90	SAND
2080	2104	24	SAND/SHALE
2104	2108	4	P-3 COAL
2108	2110	2	SHALE
2110	2140	30	SHALE/SAND
2140	2290	150	SAND
2290	2320	30	SAND/SHALE/RED SHALE
2320	2350	30	RED SHALE

2350' – TOTAL DEPTH
25' – 13 3/8" CASING
751.40' – 7" CASING
2172.10' – 4 1/2" CASING