



Commonwealth of Virginia
 Department of Mines, Minerals, and Energy
 Division of Gas and Oil
 P.O. Box 1416; Abingdon, VA 24212
 Telephone: (276) 676-5423

Tracking Number: 444
 Company: CNX Gas Company LLC
 File Number: BU-3256
 Operations Name: CBM G9 W/PL
 Operation Type: Coalbed/Pipeline
 Drilling Report Type: Original

DRILLING REPORT (DGO-GO-14)

1. Drilling Data

Date drilling commenced: 10/23/2006 Drilling Contractor: Noah Horn
 Date drilling completed: 10/26/2006 Rig Type: Rotary Cable Tool
 Driller's Total Depth (feet): 2,220
 Log Total Depth (feet): 2,181 Coal Seam At Total Depth Pocahontas

2. Final Location Plat (as required by 4 VAC25-150-360.C.)

Permitted State Plane X: 960,854 Final Plat State Plane X: 960,854
 Permitted State Plane Y: 355,566 Final Plat State Plane Y: 355,564

Plat Previously Submitted Or...

List of Attached Items:

Description	FileName
Plat	G9 Plat.pdf

3. Geological Data

Fresh Water At:

Depth (in feet)	Rate	Unit of Measure

Salt Water At:

Depth (in feet)	Rate	Unit of Measure
2,130	Damp	GPM

Coal Seams

List of Attached Items:

Description	FileName
Exhibit A	G9 Exhibit A.doc

Gas and Oil Shows

List of Attached Items:

Description	FileName
Gas Show	G9 Gas Show.doc

4. Electric Logs (As required by 4VAC25-150-280.A.)

List all logs run: Caliper Gamma Density Temp Deviation

Did logs disclose vertical locations of a coal seam? Yes No

5. Survey Results (As required by 4VAC25-150-280.B.2)

List of Attached Items:

Description	FileName
Deviation	G9 Deviation.pdf

6. Casing and Tubing Program

List of Attached Items:

Description	FileName
Casing	G9 Casing.doc

7. Remarks

Use this space to note any conditions or occurrences, such as lost circulation, fishing jobs, junk left in hole, sidetracks, squeeze jobs, etc., not shown above. Include data and depth of condition/occurrence.

Mine Void @ 517' - 519'; Grouted backside of 7" casing to surface

8. Drillers Log

Compiled By: Noah Horn

List of Attached Items:

Description	FileName
Drill Data	G9 Drill Data..doc

9. Comments

10. Signature

Permitee: CNX Gas Company LLC Date: 6/18/2007 (Company)

Signed By: Leslie K Arrington Title: Manager (Signature)

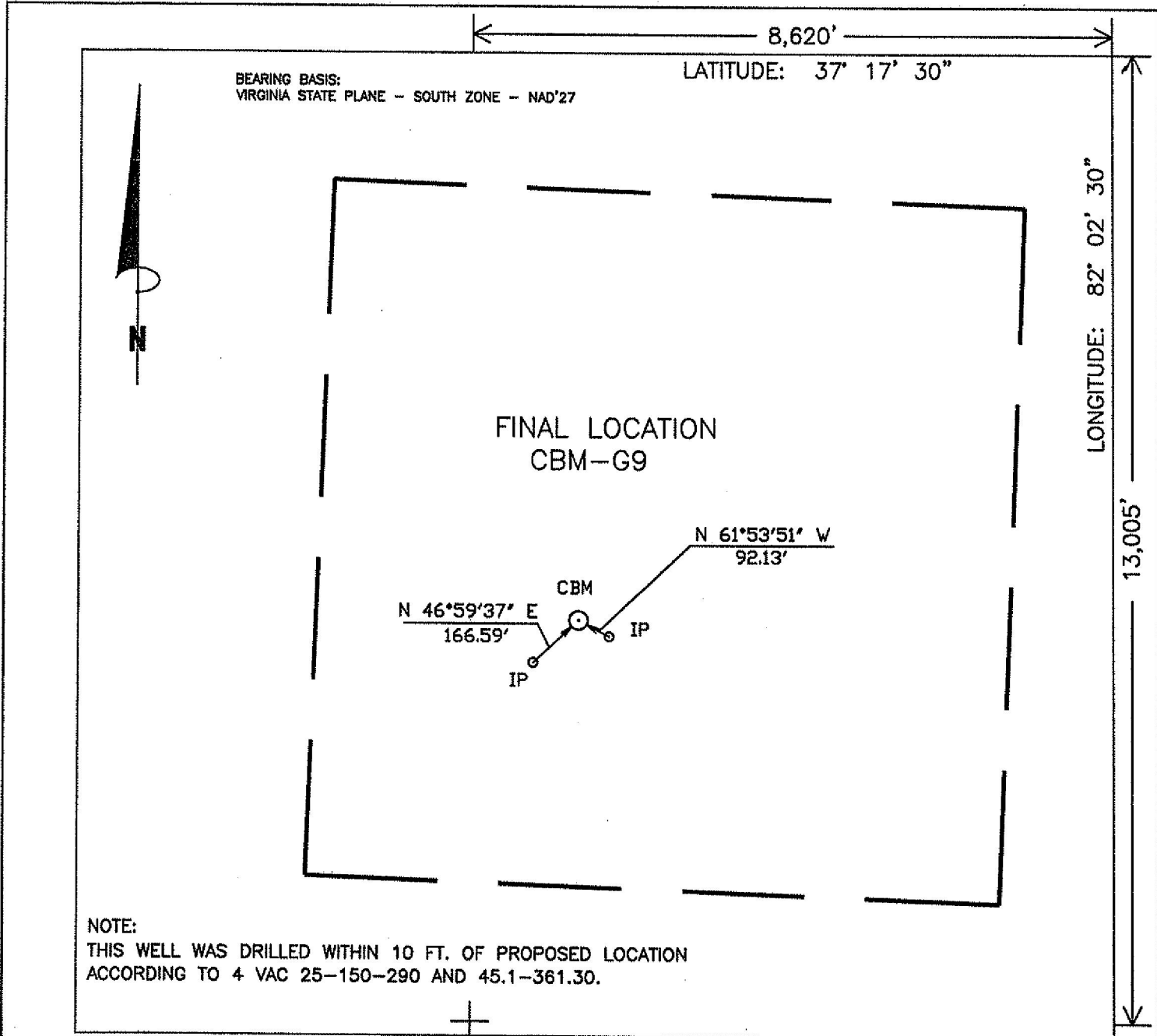
INTERNAL USE ONLY

Submit Date: 6/18/2007

Status: Inspr Approved

Date: 7/3/2007

Final PDF Date: 7/9/2007



WELL LOCATION PLAT

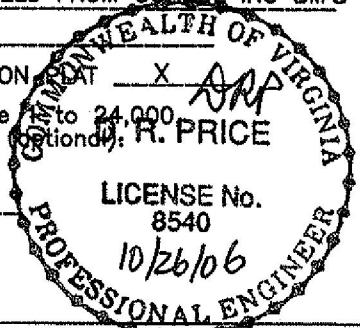
G9FNL
1N14/24-556/18

COMPANY CNX GAS COMPANY, LLC. WELL NAME OR NUMBER CBM-G9
 TRACT NUMBER CONSOL COAL QUADRANGLE GRUNDY
 DISTRICT: SOUTH GRUNDY

WELL COORDINATES (VIRGINIA STATE PLANE): STATE PLANE: N 355,563.60 E 960,854.44
 ELEVATION: 2077.23' METHOD USED TO DETERMINE ELEVATION: BY TRIG. LEVELS FROM CONSOL INC BM'S
 COUNTY BUCHANAN Scale: 1" = 400' Date 10-26-06

THIS PLAT IS A NEW PLAT _____; AN UPDATED PLAT _____; OR A FINAL LOCATION PLAT X
 + Denotes the location of a well on United States Topographic Maps, scale to 24,000
 latitude and longitude lines being represented by border lines as shown (optional)

R. Price



Licensed Professional Engineer or Licensed Land Surveyor (Affix Seal)

Exhibit A

Well Name: CBM-G9

SURFACE ELEV: 2070.00 EASTING: 960733.00 NORTHING: 355450.00

SEAM	DEPTH FROM (FT)	DEPTH TO (FT)	ELEVATION (TOSE)	THK. (FT)	REMARKS
	1.00	133.40	2069.00	132.40	
SD1	133.40	133.90	1936.60	0.50	
	133.90	165.20	1936.10	31.30	
SD2	165.20	166.90	1904.80	1.70	
	166.90	185.80	1903.10	18.90	
SD3	185.80	186.30	1884.20	0.50	
	186.30	197.00	1883.70	10.70	
COAL	197.00	197.20	1873.00	0.20	
	197.20	209.30	1872.80	12.10	
COAL	209.30	209.80	1860.70	0.50	
	209.80	315.20	1860.20	105.40	
LB2	315.20	315.80	1754.80	0.60	
	315.80	375.90	1754.20	60.10	
COAL	375.90	376.70	1694.10	0.80	
	376.70	517.00	1693.30	140.30	
KN2	517.00	519.00	1553.00	2.00	MINED OUT
	519.00	636.80	1551.00	117.80	
AL2	636.80	638.40	1433.20	1.60	
	638.40	707.80	1431.60	69.40	
RA2	707.80	709.20	1362.20	1.40	
	709.20	713.80	1360.80	4.60	
COAL	713.80	713.90	1356.20	0.10	
	713.90	718.90	1356.10	5.00	
RA3	718.90	719.10	1351.10	0.20	
	719.10	795.00	1350.90	75.90	
JB1	795.00	795.90	1275.00	0.90	
	795.90	846.20	1274.10	50.30	
JB3	846.20	848.20	1223.80	2.00	
	848.20	875.00	1221.80	26.80	
COAL	875.00	875.20	1195.00	0.20	
	875.20	917.80	1194.80	42.60	
T1	917.80	919.00	1152.20	1.20	
	919.00	1018.40	1151.00	99.40	
US1	1018.40	1019.00	1051.60	0.60	
	1019.00	1049.30	1051.00	30.30	
*US2	1049.30	1050.00	1020.70	0.70	
	1050.00	1050.50	1020.00	0.50	
*COAL	1050.50	1050.60	1019.50	0.10	
	1050.60	1206.80	1019.40	156.20	
*LS1	1206.80	1207.70	863.20	0.90	
	1207.70	1243.60	862.30	35.90	
*COAL	1243.60	1244.50	826.40	0.90	
	1244.50	1330.00	825.50	85.50	
*COAL	1330.00	1330.90	740.00	0.90	
	1330.90	1404.30	739.10	73.40	
*MH1	1404.30	1404.50	665.70	0.20	
	1404.50	1485.80	665.50	81.30	

*P10	1485.80	1488.00	584.20	2.20
	1488.00	1501.80	582.00	13.80
*COAL	1501.80	1502.00	568.20	0.20
	1502.00	1508.70	568.00	6.70
*COAL	1508.70	1509.20	561.30	0.50
	1509.20	1530.10	560.80	20.90
*COAL	1530.10	1530.30	539.90	0.20
	1530.30	1545.20	539.70	14.90
*LH3	1545.20	1547.00	524.80	1.80
	1547.00	1963.20	523.00	416.20
*P3	1963.20	1967.60	106.80	4.40
	1967.60	1988.80	102.40	21.20
*P21	1988.80	1988.90	81.20	0.10
	1988.90	1996.30	81.10	7.40
*P22	1996.30	1996.40	73.70	0.10
	1996.40	2181.42	73.60	185.02

NOTE: FOOTAGE NOT ADJUSTED FOR DEVIATION
COAL SEAMS TO BE STIMULATED WERE ADJUSTED DUE TO THE GAS
WELL'S PROXIMITY WATKINS BRANCH.
GAMMA-CALIPER LOG FROM 0 TO 594.00
GAMMA-DENSITY LOG FROM 594.00 TO TD.
FILE: C:\VP\APPS\G9.CMP
DATE: 11/03/06

Oil & Gas Show

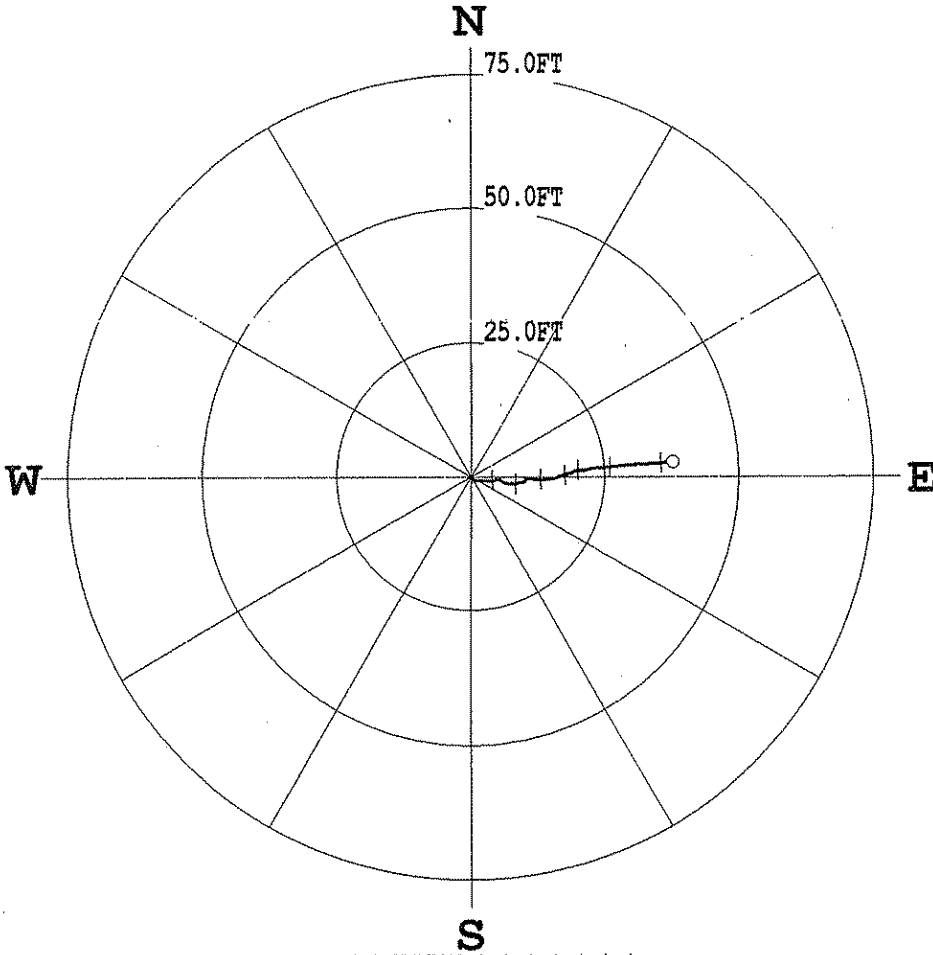
FORMATION	TOP	BOTTOM	THICKNESS	IPF (MCFD/BOPD)	PRESSURE	HOURS TESTED
Lee/Norton	1486	1547	61			
Pocahontas	1963	1967	4			
Total				Not taken		

PLAN VIEW COMPU-LOG DEVIATION

CLIENT: CONSOL ENERGY
 LOCATION: -
 HOLE ID: 06-CNX-G-9
 DATE OF LOG: 10/25/06
 PROBE: 9136CH 1244



SCALE: 25 FT/IN
 TRUE DEPTH: 2180.40 FT
 AZIMUTH: 85.8
 DISTANCE: 37.7 FT
 + = 300 FT INCR
 ○ = BOTTOM OF HOLE



* * * * * COMPU-LOG - VERTICAL DEVIATION * * * * *

CLIENT : CONSOL ENERGY	HOLE ID. : 06-CNX-G-9
FIELD OFFICE : O'DRISCOLL	DATE OF LOG : 10/25/06
DATA FROM : -	PROBE : 9136CH , 1244
MAG. DECL. : -7.100	DEPTH UNITS : FEET
LOG: 06-CNX-G-9_10-25-06_23-02_9136CH_.10_0.00_2180_FINALDEVI.log	

TABLE DEPTH	TRUE DEPTH	NORTH DEV.	EAST DEV.	DISTANCE	AZIMUTH	SANG	SANGB
0.5	0.50	0.00	0.00	0.0	0.0	0.0	0.0
10.0	10.00	-0.00	-0.00	0.0	198.5	0.2	134.6
20.0	20.00	-0.01	-0.02	0.0	239.2	0.2	258.8
30.0	30.00	-0.02	-0.03	0.0	235.9	0.2	280.6
40.0	40.00	-0.04	0.01	0.0	162.9	0.4	123.1
50.0	50.00	-0.12	0.04	0.1	159.9	0.4	183.5
60.0	60.00	-0.20	0.05	0.2	166.4	0.5	173.4
70.0	70.00	-0.30	0.09	0.3	163.2	0.8	140.0
80.0	80.00	-0.40	0.19	0.4	154.9	1.2	128.4
90.0	90.00	-0.48	0.29	0.6	148.6	0.6	120.3
100.0	100.00	-0.53	0.43	0.7	140.8	1.0	101.3
110.0	109.99	-0.57	0.61	0.8	133.1	1.2	100.8
120.0	119.99	-0.61	0.82	1.0	126.6	0.9	83.7
130.0	129.99	-0.63	1.02	1.2	121.6	1.2	102.2
140.0	139.99	-0.66	1.26	1.4	117.6	1.3	95.1

70.0	70.00	-0.30	0.09	0.3	163.2	0.8	140.0
80.0	80.00	-0.40	0.19	0.4	154.9	1.2	128.4
90.0	90.00	-0.48	0.29	0.6	148.6	0.6	120.3
100.0	100.00	-0.53	0.43	0.7	140.8	1.0	101.3
110.0	109.99	-0.57	0.61	0.8	133.1	1.2	100.8
120.0	119.99	-0.61	0.82	1.0	126.6	0.9	83.7
130.0	129.99	-0.63	1.02	1.2	121.6	1.2	102.2
140.0	139.99	-0.66	1.26	1.4	117.6	1.3	95.1
150.0	149.98	-0.67	1.48	1.6	114.2	1.1	96.3
160.0	159.98	-0.65	1.65	1.8	111.3	1.4	79.8
170.0	169.98	-0.64	1.88	2.0	108.9	1.3	87.1
180.0	179.98	-0.66	2.06	2.2	107.7	0.8	113.1
190.0	189.98	-0.71	2.20	2.3	108.0	0.8	96.2
200.0	199.98	-0.74	2.31	2.4	107.7	1.0	102.6
210.0	209.97	-0.76	2.51	2.6	106.8	1.4	99.5
220.0	219.97	-0.76	2.74	2.8	105.5	1.4	86.0
230.0	229.97	-0.75	2.95	3.0	104.3	1.1	86.9
240.0	239.97	-0.74	3.10	3.2	103.3	0.9	86.4
250.0	249.97	-0.73	3.29	3.4	102.5	1.1	92.5
260.0	259.96	-0.73	3.46	3.5	101.9	0.7	83.6
270.0	269.96	-0.73	3.61	3.7	101.5	0.5	84.8
280.0	279.96	-0.73	3.72	3.8	101.1	0.8	78.9
290.0	289.96	-0.71	3.79	3.9	100.6	0.3	55.7
300.0	299.96	-0.70	3.89	3.9	100.2	0.4	116.0
310.0	309.96	-0.70	4.00	4.1	99.9	0.4	79.8
320.0	319.96	-0.69	4.08	4.1	99.5	0.6	95.4
330.0	329.96	-0.67	4.14	4.2	99.2	0.5	78.6
340.0	339.96	-0.64	4.21	4.3	98.7	0.4	34.6
350.0	349.96	-0.60	4.26	4.3	98.0	0.6	74.1
360.0	359.96	-0.58	4.38	4.4	97.5	0.8	82.9
370.0	369.96	-0.54	4.49	4.5	96.8	0.7	63.3
380.0	379.96	-0.50	4.59	4.6	96.2	0.9	76.8
390.0	389.96	-0.48	4.73	4.8	95.8	0.7	75.8
400.0	399.96	-0.47	4.87	4.9	95.5	0.9	86.1
410.0	409.95	-0.45	5.00	5.0	95.1	0.7	86.9
420.0	419.95	-0.47	5.15	5.2	95.3	0.9	103.7
430.0	429.95	-0.53	5.27	5.3	95.8	0.7	112.1
440.0	439.95	-0.60	5.37	5.4	96.4	0.7	150.5
450.0	449.95	-0.69	5.50	5.5	97.2	1.0	119.8
460.0	459.95	-0.80	5.64	5.7	98.1	1.1	132.9
470.0	469.95	-0.91	5.76	5.8	99.0	0.9	132.9
480.0	479.95	-1.00	5.90	6.0	99.6	1.3	103.7
490.0	489.94	-1.07	6.11	6.2	99.9	1.2	114.4
500.0	499.94	-1.12	6.32	6.4	100.0	1.5	101.9
510.0	509.94	-1.19	6.47	6.6	100.4	0.8	129.0
520.0	519.94	-1.21	6.68	6.8	100.3	1.3	94.7
530.0	529.93	-1.26	6.86	7.0	100.4	1.6	78.7
540.0	539.93	-1.28	7.05	7.2	100.3	1.1	86.4
550.0	549.93	-1.24	7.29	7.4	99.6	1.2	73.4
560.0	559.93	-1.23	7.47	7.6	99.4	1.0	106.3
570.0	569.93	-1.23	7.67	7.8	99.1	1.2	94.5
580.0	579.92	-1.29	7.84	7.9	99.4	1.0	112.1
590.0	589.92	-1.33	8.03	8.1	99.4	1.4	100.5
600.0	599.92	-1.34	8.21	8.3	99.3	1.0	84.4
610.0	609.92	-1.23	8.35	8.4	98.4	1.3	309.8
620.0	619.92	-1.21	8.24	8.3	98.3	1.0	75.4
630.0	629.91	-1.18	8.42	8.5	98.0	1.1	90.2
640.0	639.91	-1.12	8.58	8.6	97.5	1.0	117.2
650.0	649.91	-1.13	8.73	8.8	97.4	1.0	85.8
660.0	659.91	-1.10	8.92	9.0	97.0	1.2	88.5
670.0	669.91	-1.08	9.12	9.2	96.8	1.2	82.4
680.0	679.91	-1.07	9.31	9.4	96.5	1.2	107.4
690.0	689.90	-1.03	9.49	9.5	96.2	1.1	77.9
700.0	699.90	-1.00	9.67	9.7	95.9	1.1	84.0
710.0	709.90	-0.94	9.66	9.7	95.6	1.2	315.9
720.0	719.90	-0.90	9.82	9.9	95.3	1.7	76.9
730.0	729.90	-0.84	10.01	10.0	94.8	1.2	43.2
740.0	739.89	-0.63	10.05	10.1	93.6	1.4	20.2
750.0	749.89	-0.44	10.04	10.1	92.5	1.0	38.4
760.0	759.89	-0.40	10.24	10.2	92.2	1.3	92.6
770.0	769.89	-0.39	10.47	10.5	92.1	1.2	83.2
780.0	779.88	-0.36	10.69	10.7	91.9	1.3	93.3
790.0	789.88	-0.35	10.92	10.9	91.8	1.4	80.0
800.0	799.88	-0.35	11.13	11.1	91.8	1.1	115.3
810.0	809.88	-0.35	11.34	11.3	91.7	1.3	103.4
820.0	819.87	-0.36	11.53	11.5	91.8	1.2	56.2
830.0	829.87	-0.37	11.76	11.8	91.8	1.3	75.4
840.0	839.87	-0.36	11.61	11.6	91.8	1.4	337.8
850.0	849.86	-0.52	11.63	11.6	92.6	1.5	161.8
860.0	859.86	-0.53	11.87	11.9	92.6	1.3	85.0
870.0	869.86	-0.52	12.13	12.1	92.5	1.5	83.3
880.0	879.86	-0.50	12.38	12.4	92.3	1.6	83.4
890.0	889.85	-0.50	12.64	12.6	92.3	1.5	90.0
900.0	899.85	-0.49	12.89	12.9	92.2	1.5	88.1
910.0	909.85	-0.45	13.14	13.1	92.0	1.4	81.4
920.0	919.84	-0.47	13.33	13.3	92.0	0.9	84.2
930.0	929.84	-0.47	13.55	13.6	92.0	1.3	86.7
940.0	939.84	-0.47	13.76	13.8	91.9	1.3	86.8
950.0	949.84	-0.46	13.97	14.0	91.9	1.2	87.5
960.0	959.83	-0.44	14.17	14.2	91.8	1.1	86.7
970.0	969.83	-0.44	14.38	14.4	91.7	1.1	83.6
980.0	979.83	-0.42	14.59	14.6	91.7	1.2	86.3
990.0	989.83	-0.39	14.79	14.8	91.5	1.2	82.3
1000.0	999.83	-0.38	14.99	15.0	91.4	1.1	89.7
1010.0	1009.82	-0.34	15.16	15.2	91.3	1.0	68.5
1020.0	1019.82	-0.32	15.25	15.2	91.2	0.9	66.1

940.0	939.84	-0.47	13.76	13.8	91.9	1.3	86.8
950.0	949.84	-0.46	13.97	14.0	91.9	1.2	87.5
960.0	959.83	-0.44	14.17	14.2	91.8	1.1	86.7
970.0	969.83	-0.44	14.38	14.4	91.7	1.1	83.6
980.0	979.83	-0.42	14.59	14.6	91.7	1.2	86.3
990.0	989.83	-0.39	14.79	14.8	91.5	1.2	82.3
1000.0	999.83	-0.38	14.99	15.0	91.4	1.1	89.7
1010.0	1009.82	-0.34	15.16	15.2	91.3	1.0	68.5
1020.0	1019.82	-0.33	15.25	15.3	91.2	0.9	66.1
1030.0	1029.82	-0.30	15.33	15.3	91.1	1.1	73.1
1040.0	1039.82	-0.27	15.46	15.5	91.0	0.5	74.4
1050.0	1049.82	-0.23	15.58	15.6	90.9	0.7	76.6
1060.0	1059.82	-0.19	15.71	15.7	90.7	0.9	46.3
1070.0	1069.82	-0.14	15.86	15.9	90.5	0.9	71.0
1080.0	1079.82	-0.06	16.02	16.0	90.2	1.0	56.3
1090.0	1089.81	-0.01	16.18	16.2	90.0	1.1	68.2
1100.0	1099.81	0.05	16.33	16.3	89.8	0.9	74.1
1110.0	1109.81	0.10	16.48	16.5	89.7	1.0	81.3
1120.0	1119.81	0.14	16.63	16.6	89.5	0.8	75.7
1130.0	1129.81	0.19	16.78	16.8	89.3	0.9	56.3
1140.0	1139.81	0.24	16.94	16.9	89.2	0.8	80.7
1150.0	1149.81	0.29	17.07	17.1	89.0	1.0	62.1
1160.0	1159.81	0.35	17.22	17.2	88.8	0.8	62.4
1170.0	1169.80	0.35	17.35	17.4	88.8	0.9	138.2
1180.0	1179.80	0.30	17.27	17.3	89.0	0.4	114.0
1190.0	1189.80	0.35	17.34	17.3	88.9	0.8	155.8
1200.0	1199.80	0.34	17.41	17.4	88.9	0.5	28.9
1210.0	1209.80	0.39	17.47	17.5	88.7	0.7	179.0
1220.0	1219.80	0.37	17.54	17.5	88.8	0.5	54.6
1230.0	1229.80	0.42	17.56	17.6	88.6	0.5	67.6
1240.0	1239.80	0.42	17.65	17.7	88.6	0.7	10.8
1250.0	1249.80	0.51	17.61	17.6	88.4	0.6	37.0
1260.0	1259.80	0.55	17.72	17.7	88.2	0.7	84.9
1270.0	1269.80	0.60	17.84	17.9	88.1	0.8	56.6
1280.0	1279.80	0.56	17.94	18.0	88.2	0.7	149.7
1290.0	1289.80	0.64	17.99	18.0	88.0	0.9	53.2
1300.0	1299.79	0.65	18.12	18.1	87.9	1.0	145.7
1310.0	1309.79	0.70	18.19	18.2	87.8	0.9	51.7
1320.0	1319.79	0.59	18.21	18.2	88.1	0.7	110.1
1330.0	1329.79	0.66	18.32	18.3	87.9	0.7	70.0
1340.0	1339.79	0.56	18.39	18.4	88.3	0.8	76.3
1350.0	1349.79	0.61	18.51	18.5	88.1	0.8	69.9
1360.0	1359.79	0.70	18.62	18.6	87.9	0.7	60.9
1370.0	1369.79	0.74	18.73	18.7	87.7	0.6	80.6
1380.0	1379.79	0.82	18.83	18.8	87.5	0.7	48.2
1390.0	1389.79	0.85	18.91	18.9	87.4	0.4	61.0
1400.0	1399.79	0.90	18.98	19.0	87.3	0.7	46.2
1410.0	1409.79	0.94	19.07	19.1	87.2	0.5	75.9
1420.0	1419.79	1.02	19.15	19.2	87.0	0.6	69.1
1430.0	1429.78	1.04	19.23	19.3	86.9	0.5	64.8
1440.0	1439.78	1.09	19.31	19.3	86.8	0.6	55.4
1450.0	1449.78	1.12	19.39	19.4	86.7	0.4	65.3
1460.0	1459.78	1.16	19.46	19.5	86.6	0.6	72.4
1470.0	1469.78	1.19	19.55	19.6	86.5	0.6	88.5
1480.0	1479.78	1.22	19.65	19.7	86.5	0.4	73.9
1490.0	1489.78	1.23	19.74	19.8	86.4	0.6	79.0
1500.0	1499.78	1.25	19.83	19.9	86.4	0.5	88.6
1510.0	1509.78	1.22	19.86	19.9	86.5	1.0	216.2
1520.0	1519.78	1.21	19.91	19.9	86.5	0.9	89.2
1530.0	1529.78	1.20	20.03	20.1	86.6	0.8	98.1
1540.0	1539.78	1.22	20.17	20.2	86.5	0.8	109.4
1550.0	1549.78	1.22	20.30	20.3	86.6	0.8	80.9
1560.0	1559.78	1.20	20.45	20.5	86.6	0.7	87.7
1570.0	1569.77	1.24	20.59	20.6	86.6	1.0	140.5
1580.0	1579.77	1.22	20.72	20.8	86.6	0.9	121.4
1590.0	1589.77	1.20	20.76	20.8	86.7	1.2	7.7
1600.0	1599.77	1.15	20.70	20.7	86.8	0.9	253.1
1610.0	1609.77	1.14	20.83	20.9	86.9	1.7	50.2
1620.0	1619.77	1.18	21.01	21.0	86.8	1.1	77.7
1630.0	1629.76	1.27	21.20	21.2	86.6	1.4	91.6
1640.0	1639.76	1.31	21.41	21.4	86.5	1.2	86.2
1650.0	1649.76	1.39	21.66	21.7	86.3	1.1	91.4
1660.0	1659.75	1.43	21.92	22.0	86.3	1.5	79.5
1670.0	1669.75	1.50	22.18	22.2	86.1	1.5	80.6
1680.0	1679.75	1.52	22.44	22.5	86.1	1.5	75.5
1690.0	1689.74	1.56	22.71	22.8	86.1	1.7	87.1
1700.0	1699.74	1.60	22.99	23.0	86.0	1.7	70.4
1710.0	1709.73	1.62	23.27	23.3	86.0	1.7	88.0
1720.0	1719.73	1.64	23.55	23.6	86.0	1.5	88.7
1730.0	1729.73	1.66	23.82	23.9	86.0	1.6	80.1
1740.0	1739.72	1.69	24.10	24.2	86.0	1.7	83.1
1750.0	1749.72	1.72	24.38	24.4	86.0	1.6	83.2
1760.0	1759.71	1.75	24.67	24.7	85.9	1.8	88.1
1770.0	1769.71	1.77	24.97	25.0	85.9	1.6	93.0
1780.0	1779.71	1.81	25.25	25.3	85.9	1.7	87.6
1790.0	1789.70	1.83	25.53	25.6	85.9	1.7	82.6
1800.0	1799.70	1.87	25.82	25.9	85.9	1.5	83.6
1810.0	1809.69	1.90	26.10	26.2	85.8	1.6	81.1
1820.0	1819.69	1.92	26.38	26.5	85.8	1.6	88.0
1830.0	1829.69	1.97	26.67	26.7	85.8	1.7	81.8
1840.0	1839.68	1.99	26.94	27.0	85.8	1.6	83.2
1850.0	1849.68	2.03	27.24	27.3	85.7	1.7	83.5
1860.0	1859.67	2.06	27.52	27.6	85.7	1.6	81.0
1870.0	1869.67	2.09	27.81	27.9	85.7	1.5	93.6
1880.0	1879.67	2.11	28.09	28.2	85.7	1.6	88.5
1890.0	1889.66	2.15	28.39	28.5	85.7	1.7	87.6

800.0	1709.70	1.87	25.82	25.0	85.0	1.6	83.0
810.0	1809.69	1.90	26.10	26.2	85.8	1.6	81.1
820.0	1819.69	1.92	26.38	26.5	85.8	1.6	88.0
830.0	1829.69	1.97	26.67	26.7	85.8	1.7	81.8
840.0	1839.68	1.99	26.94	27.0	85.8	1.6	83.2
850.0	1849.68	2.03	27.24	27.3	85.7	1.7	83.5
860.0	1859.67	2.06	27.52	27.6	85.7	1.6	81.0
870.0	1869.67	2.09	27.81	27.9	85.7	1.5	93.6
880.0	1879.67	2.11	28.09	28.2	85.7	1.6	88.5
890.0	1889.66	2.15	28.39	28.5	85.7	1.7	87.6
900.0	1899.66	2.17	28.67	28.7	85.7	1.8	85.7
910.0	1909.65	2.21	28.97	29.1	85.6	1.7	86.1
920.0	1919.65	2.22	29.26	29.3	85.7	1.8	94.2
930.0	1929.64	2.24	29.57	29.7	85.7	1.9	94.5
940.0	1939.64	2.27	29.87	30.0	85.7	1.9	86.9
950.0	1949.63	2.29	30.20	30.3	85.7	1.9	77.9
960.0	1959.63	2.33	30.55	30.6	85.6	1.8	98.3
970.0	1969.62	2.36	30.88	31.0	85.6	2.0	75.8
980.0	1979.61	2.35	31.21	31.3	85.7	1.9	73.3
990.0	1989.61	2.39	31.55	31.6	85.7	1.9	90.3
000.0	1999.60	2.40	31.87	32.0	85.7	1.8	77.9
010.0	2009.60	2.42	32.21	32.3	85.7	2.0	92.1
020.0	2019.59	2.42	32.55	32.6	85.7	2.0	88.4
030.0	2029.59	2.44	32.90	33.0	85.8	2.0	89.9
040.0	2039.58	2.46	33.25	33.3	85.8	2.0	89.5
050.0	2049.57	2.48	33.59	33.7	85.8	2.0	85.4
060.0	2059.57	2.49	33.93	34.0	85.8	1.8	86.1
070.0	2069.56	2.51	34.26	34.4	85.8	2.0	88.0
080.0	2079.56	2.54	34.61	34.7	85.8	1.9	86.5
090.0	2089.55	2.56	34.94	35.0	85.8	2.1	88.6
100.0	2099.55	2.58	35.26	35.4	85.8	1.9	83.3
110.0	2109.54	2.61	35.59	35.7	85.8	1.9	84.3
120.0	2119.53	2.62	35.91	36.0	85.8	1.9	88.2
130.0	2129.53	2.65	36.22	36.3	85.8	1.9	89.2
140.0	2139.53	2.66	36.53	36.6	85.8	1.7	87.5
150.0	2149.52	2.68	36.85	36.9	85.8	1.9	92.3
160.0	2159.52	2.70	37.15	37.3	85.8	1.8	84.8
170.0	2169.51	2.72	37.35	37.4	85.8	2.1	83.0
180.0	2179.50	2.76	37.56	37.7	85.8	1.8	75.6
190.0	2180.40	2.77	37.59	37.7	85.8	1.9	75.8

DRILL DATA HOLE-NOAH HORN WELL DRILLING, INC

COMPANY: CNX

HOLE #: G-9

LOCATION: CHILDRESS BRANCH

DRILL RIG #: 17

DATE STARTED: 10-23-06

DATED COMPLETED: 10-26-06

ELECTRIC LOGGED: YES

GROUTED: YES

DEPTH		THICKNESS	STRATA	REMARKS
FROM	TO	FT	DESCRIPTION, VOIDS ETC	
0	29.10	29.10	OVERBURDEN/SANDY SHALE	
29.10	35.00	5.90	SANDY SHALE	
35.00	65.00	30	SANDY SHALE/COAL/SAND	
65.00	125	60	SANDY SHALE	
125	185	60	SAND/SHALE/COAL	
185	215	30	SANDY SHALE/COAL/SANDY SHALE/COAL	
215	245	30	SANDY SHALE/SAND	
245	275	30	SAND/SANDY SHALE/SAND	
275	305	30	SAND/SANDY SHALE	
305	335	30	SANDY SHALE/COAL/SANDY SHALE	
335	365	30	SANDY SHALE	
365	395	30	SANDY SHALE/COAL/SAND	
395	425	30	SAND/SANDY SHALE	
425	455	30	SANDY SHALE	
455	485	30	SANDY SHALE/SAND	
485	515	30	SAND/SANDY SHALE	
515	545	30	SANDY SHALE/VOID/SAND VOID 518-521	
545	575	30	SAND/SANDY SHALE	
575	605	30	SANDY SHALE/COAL/SANDY SHALE	
605	630	25	SAND/SHALE/COAL	
630	660	30	SAND/COAL/SANDY SHALE	
660	690	30	SANDY SHALE	
690	720	30	SANDY SHALE/COAL/SANDY SHALE	
720	780	60	SANDY SHALE	
780	810	30	SANDY SHALE/COAL/SANDY SHALE/SAND	
810	840	30	SAND/SANDY SHALE	
840	870	30	SANDY SHALE/SAND	
870	900	30	SAND/SANDY SHALE	
900	930	30	SANDY SHALE/COAL/SANDY SHALE	
930	960	30	SANDY SHALE	
960	990	30	SAND/SANDY SHALE	
990	1050	60	SANDY SHALE/COAL	
1050	1080	30	SANDY SHALE/COAL/SAND	
1080	1110	30	SANDY SHALE/SAND	
1110	1170	60	SAND/SANDY SHALE	
1170	1200	30	SANDY SHALE	
1200	1260	60	SANDY SHALE/COAL/SANDY SHALE	
1260	1290	30	SANDY SHALE/SAND	
1290	1320	30	SAND/SANDY SHALE	
1320	1350	30	SANDY SHALE/SAND	
1350	1380	30	SAND/COAL/SANDY SHALE	
1380	1410	30	SANDY SHALE/SAND	

1410	1440	30	SAND/SANDY SHALE
1440	1470	30	SANDY SHALE
1470	1560	90	SANDY SHALE/COAL/SANDY SHALE
1560	1590	30	SANDY SHALE/SHALE
1590	1620	30	SANDY SHALE/SHALE/COAL
1620	1650	30	SAND/SHALE
1650	1680	30	SAND/SHALE/COAL
1680	1710	30	SANDY SHALE/SAND
1710	1800	90	SAND
1800	1830	30	SANDY SHALE
1830	1890	60	SAND/SHALE
1890	1920	30	SANDY SHALE/SHALE
1920	1950	30	SAND/SHALE
1950	1960	10	SHALE
1960	1964	4	COAL P-3
1964	1980	16	SAND/SHALE
1980	2010	30	SAND/SHALE/COAL
2010	2070	60	SAND/SHALE
2070	2130	60	SAND
2130	2160	30	SANDY SHALE
2160	2190	30	SAND
2190	2220	30	SAND/SHALE/RED SHALE

2220.00 FT. TOTAL DEPTH
 29.10 FT. OF 13 3/8" CASING
 574.60 FT. OF 7" CASING
 2030.00 FT. OF 4 1/2" CASING