

INTERVAL SHEET

Page 1

VDMR Well No.: 577

Date 10-22-61

Sample Interval: from 10 to 305

PROP: SPOTSYLVANIA CO.  
SCHOOL LIVINGSTON SITE #1

Total depth 305

COMP: SYDNOR

Oil \_\_\_\_\_ Gas \_\_\_\_\_ Water x Exploratory \_\_\_\_\_

COUNTY: SPOTSYLVANIA

Cuttings x Core \_\_\_\_\_ Other \_\_\_\_\_

From-To	From-To	From-To	From-To	From-To
-	10 - 20	-	WASHED SAMPLES	-
-	20 - 30	-	Complete set of sampled intervals	-
-	20 - 30	-		-
-	30 - 40	-		-
-	40 - 50	-		-
-	50 - 60	-		-
-	60 - 70	-		-
-	70 - 80	-		-
-	80 - 90	-		-
-	90 - <u>100</u>	-		-
-	100 - 110	-		-
-	110 - 120	-		-
-	120 - 130	-		-
-	130 - 140	-		-
-	140 - 150	-		-
-	150 - 160	-		-
-	160 - 170	-		-
-	170 - 180	-		-
-	180 - 190	-		-
-	190 - <u>200</u>	-		-
-	200 - 210	-		-
-	210 - 220	-		-
-	220 - 230	-		-
-	230 - 240	-		-
-	240 - 250	-		-
-	250 - 260	-		-
-	260 - 305	-		-
-	-	-		-
-	-	-		-
-	-	-		-
-	-	-		-

COMMONWEALTH OF VIRGINIA  
 DEPARTMENT OF CONSERVATION AND ECONOMIC DEVELOPMENT  
 DIVISION OF MINERAL RESOURCES

Box 3667, University Station, Charlottesville, Virginia

459  
 WWCR 475  
 VDMR 577

WATER WELL COMPLETION REPORT

OWNER: Spotsylvania County School Board Mailing Address: Spotsylvania, Virginia  
 TENANT: Livingston Site Well #1 Mailing Address: \_\_\_\_\_  
 DRILLER: Sydnor Pump & Well Co., Inc. Mailing Address: Richmond, Virginia  
 WELL LOCATION: County Spotsylvania Approx. \_\_\_\_\_ ft. \_\_\_\_\_ miles  
 \_\_\_\_\_ (direction) of \_\_\_\_\_ and \_\_\_\_\_ ft. \_\_\_\_\_ miles of \_\_\_\_\_

(Give direction and distance in feet or tenths of mile from two reference points - roads, towns, rivers, etc. - on county highway or other map.)

**WATER CONDITIONS**

**DEPTH**

STATIC WATER LEVEL 35  
 WATER ZONES (fissures or formations supplying water)  
 (from) (to) (from) (to)  
 \_\_\_\_\_ ft. \_\_\_\_\_, \_\_\_\_\_ ft. \_\_\_\_\_  
 \_\_\_\_\_ ft. \_\_\_\_\_, \_\_\_\_\_ ft. \_\_\_\_\_

**QUANTITY OF WATER**

WELL PUMPED (or bailed) at 18 Gal. per Min. with  
 \_\_\_\_\_ feet **DRAWDOWN** after 8 HOURS PUMPING.  
 FLOW (natural) \_\_\_\_\_ G.P.M. HEAD \_\_\_\_\_ ft. (above ground) **W**  
 REMARKS: \_\_\_\_\_

**QUALITY OF WATER**

COLOR \_\_\_\_\_ TASTE \_\_\_\_\_  
 ODOR \_\_\_\_\_ OTHER \_\_\_\_\_  
 ANALYSIS: AVAILABLE - Yes  No  ATTACHED Yes  No   
 TEMPERATURE \_\_\_\_\_  
 \_\_\_\_\_ WATER (from) \_\_\_\_\_ ft. (to) \_\_\_\_\_ ft.  
 (salt, brackish, iron, sulfur, acid, other)  
 USE OF WATER: Domestic  Town  Industry  Farm  Public  **S**

**CONSTRUCTION**

RIG TYPE (or method) air rotary  
 (rotary, cable, bored, driven, etc.)  
 DATE: Started 5/6/61; Completed 5/9/61  
 TOTAL DEPTH 305 ft.  
 BEDROCK at 83 ft.

**GROUTING INFORMATION**

METHOD USED pressure  
 GROUTING MATERIAL cement and water  
 DEPTH OF GROUTING 50 ft.

**HOLE SIZE**

(diam)	(from)	(to)
10 in	0 ft	70 ft
6 in	70 ft	305 ft

**CASING SIZE**

(diam)	(from)	(to)
6 in	+1 ft	83' 8" ft.

**SCREEN (or perforations)**

(diam.)	(from)	(to)	(opening size)
_____ in	_____ ft.	_____ ft.	_____

**PUMP (installed)**

TYPE \_\_\_\_\_ Cap. (gpm) \_\_\_\_\_  
 H.P. \_\_\_\_\_ Depth of intake \_\_\_\_\_ ft.

REMARKS: \_\_\_\_\_  
 \_\_\_\_\_  
 \_\_\_\_\_  
 \_\_\_\_\_  
 \_\_\_\_\_



475  
W-577  
C-459

COMMONWEALTH OF VIRGINIA  
DEPARTMENT OF CONSERVATION AND ECONOMIC DEVELOPMENT  
DIVISION OF MINERAL RESOURCES

Box 3667, University Station, Charlottesville, Virginia

WATER WELL COMPLETION REPORT

OWNER: Spotsylvania County School Board Mailing Address: Spotsylvania, Virginia  
 TENANT: Livingston Site Well #1 Mailing Address: \_\_\_\_\_  
 DRILLER: Sydnor Pump & Well Co., Inc. Mailing Address: Richmond, Virginia  
 WELL LOCATION: County Spotsylvania Approx. \_\_\_\_\_ ft. \_\_\_\_\_ miles  
 \_\_\_\_\_ (direction) of \_\_\_\_\_ and \_\_\_\_\_ ft. \_\_\_\_\_ miles of \_\_\_\_\_

(Give direction and distance in feet or tenths of mile from two reference points - roads, towns, rivers, etc. - on county highway or other map.)

**WATER CONDITIONS**

**DEPTH**

STATIC WATER LEVEL 35

WATER ZONES (fissures or formations supplying water)

(from) \_\_\_\_\_ (to) \_\_\_\_\_ (from) \_\_\_\_\_ (to) \_\_\_\_\_  
 \_\_\_\_\_ ft. \_\_\_\_\_ ft. \_\_\_\_\_ ft. \_\_\_\_\_ ft.

**QUANTITY OF WATER**

WELL PUMPED (or bailed) at 18 Gal. per Min. with \_\_\_\_\_ feet **DRAWDOWN** after 8 HOURS PUMPING.

FLOW (natural) \_\_\_\_\_ G.P.M. HEAD \_\_\_\_\_ ft. (above ground) **W**

REMARKS: \_\_\_\_\_

**QUALITY OF WATER**

COLOR \_\_\_\_\_ TASTE \_\_\_\_\_

ODOR \_\_\_\_\_ OTHER \_\_\_\_\_

ANALYSIS: AVAILABLE - Yes  No  ATTACHED Yes  No

TEMPERATURE \_\_\_\_\_  
 \_\_\_\_\_ WATER (from) \_\_\_\_\_ ft. (to) \_\_\_\_\_ ft.  
 (salt, brackish, iron, sulfur, acid, other)

USE OF WATER: Domestic  Town  Industry  Farm  Public

**CONSTRUCTION**

RIG TYPE (or method) air rotary  
 (rotary, cable, bored, driven, etc..)

DATE: Started 5/6/61; Completed 5/9/61

TOTAL DEPTH 305 ft.

BEDROCK at 83 ft.

**GROUTING INFORMATION**

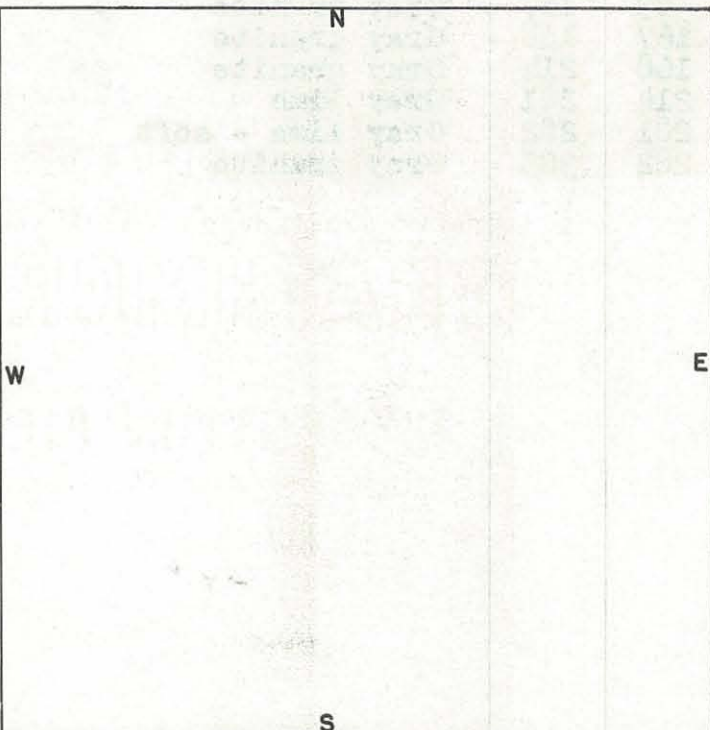
METHOD USED pressure

GROUTING MATERIAL cement and water

DEPTH OF GROUTING 50 ft.

REMARKS: \_\_\_\_\_

\_\_\_\_\_  
 \_\_\_\_\_  
 \_\_\_\_\_  
 \_\_\_\_\_  
 \_\_\_\_\_



**HOLE SIZE**

(diam) \_\_\_\_\_ in. (from) \_\_\_\_\_ ft. (to) \_\_\_\_\_ ft.  
10 in. 0 ft. 70 ft.  
6 in. 70 ft. 305 ft.

**CASING SIZE**

(diam) \_\_\_\_\_ in. (from) \_\_\_\_\_ ft. (to) \_\_\_\_\_ ft.  
6 in. 41 ft. 83'8" ft.

**SCREEN (or perforations)**

(diam.) \_\_\_\_\_ in. (from) \_\_\_\_\_ ft. (to) \_\_\_\_\_ ft. (opening size)

**PUMP (installed)**

TYPE \_\_\_\_\_ Cap. (gpm) \_\_\_\_\_

H.P. \_\_\_\_\_ Depth of intake \_\_\_\_\_ ft.

LOG

FURNISHED BY Sydner Pump & Well Company, Inc. DATE: September 15, 1961

DEPTH (feet)		TYPE OF SOIL OR ROCK PENETRATED (gravel, clay, etc., hardness, color, etc)	REMARKS (water, caving, shot, screen, sample, etc)
FROM	TO		
0	1	Topsoil	
1	4	Red clay	
4	16	Red rotten slate	
16	83	Brown soft slate	
83	167	Gray granite	
167	168	Gray granite	
168	214	Gray granite	
214	281	Gray lime	
281	282	Gray lime - soft	
282	305	Gray granite	

VIRGINIA DIVISION OF  
**RECEIVED**  
 SEP 25 1961  
**RECEIVED**  
 MINERAL RESOURCES