

Note: ' ' .

on page 1 - second
column - seven numbers
down -

Is this an error?!

Jamie

INTERVAL SHEET

Page 1

— VDMR Well No.: 484

Date Aug, 1961

Sample Interval: from _____ to _____

— PROP: T. G. Hurt #1

Total depth _____

— COMP: Bear Creek Mining Co.

Oil _____ Gas _____ Water _____ Exploratory X

— COUNTY: Albemarle

Cuttings _____ Core X Other _____

From-To	From-To	From-To	From-To	From-To
12'6" - 12'8"	83'5" - 83'8"	149'11" - 150'	203'6" - 203'8"	283'4" - 283'6"
13'7" - 13'8"	89'4" - 89'7"	155'1" - 155'3"	207'10" - 208'	284'9" - 285'1"
15' - 15'3"	93' - 93'3"	156'5" - 156'7"	211'4" - 211'4"	285'8" - 285'10"
19'6" - 19'8"	96' - 96'3"	159'1" - 159'4"	218'10" - 219'1"	289'5" - 289'11"
21' - 21'2"	98'3" - 98'5"	162'1" - 162'3"	220' - 220'3"	293'6" - 293'7"
27' - 27'2"	99'4" - 99'5"	168' - 168'3"	226'3" - 226'5"	295'6" - 295'8"
31'8" - 31'10"	<u>103'10" - 103'10"</u>	168'10" - 168'11"	227'8" - 227'9"	298'6" - 298'9"
32'2" - 32'6"	111' - 111'2"	171'7" - 171'8"	230' - 230'2"	301'2" - 301'4"
42'6" - 42'8"	116'10" - 117'	172'8" - 172'9"	234'11" - 235"	304' - 304'3"
43' - 43'4"	118' - 118'2"	174'10" - 175'0"	237'6" - 237'8"	305'3" - 305'4"
46'7" - 46'9"	122'10" - 122'11"	176' - 176'3"	240'2" - 240'6"	307'10" - 308'1"
48'11" - 49'1"	124'10" - 125'	181'1" - 181'3"	245'6" - 245'8"	308'4" - 308'6"
53'7" - 53'8"	128'8" - 128'10"	182'10" - 183'	254'10" - 254'11"	309'11" - 310'1"
57'2" - 57'6"	135'10" - 136'	183'5" - 183'6"	260'6" - 260'8"	313' - 313'3"
63'9" - 64'	143'4" - 143'6"	185'8" - 185'10"	264'5" - 264'10"	316'6" - 316'8"
64'9" - 64'11"	145'10" - 146'	188'6" - 188'8"	266'6" - 266'8"	319'8" - 319'10"
69'9" - 69'11"	148'9" - 148'10"	189'3" - 189'5"	268'10" - 269'	323'4" - 323'6"
77'6" - 77'8"	-	190'2" - 190'4"	275'1" - 275'3"	324'8" - 324'10"
79'4" - 79'7"	-	194' - 194'3"	275'9" - 275'11"	330'7" - 330'10"
-	-	-	279'5" - 279'8"	-
-	-	-	-	-
-	-	-	-	-
-	-	-	-	-
-	-	-	-	-

INTERVAL SHEET

Page 1 of 2

VDMR Well No.: 484

Date Aug. 1961

Sample Interval: from _____ to _____

PROP: T. G. Hurt

Total depth _____

COMP: Bear Creek Mining #1

Oil _____ Gas _____ Water _____ Exploratory X

COUNTY: Albemarle

Cuttings _____ Core X Other _____

From-To	From-To	From-To	From-To	From-To
12'6" -12'8"	83'5" -83'8"	149'11" -150'	203'6" -203'8"	283'4" -283'6"
13'7" -13'8"	89'4" -89'7"	155'1" -155'3"	207'10" -208'	284'9" -285'
15' -15'3"	93' -93'3"	156'5" -156'7"	211'1" -211'4"	285'8" -285'10"
19'6" -19'8"	96' -96'3"	159'1" -159'4"	218'10" -219'1"	289'8" -289'11"
-	-	-	-	-
21' -21'2"	98'3" -98'5"	162'1" -162'3"	220' -220'3"	293'6" -293'7"
27' -27'2"	99'4" -99'5"	168' -168'3"	226'3" -226'5"	295'6" -295'8"
31'8" -31'10"	103'10" -103'10"	168'10" -168'11"	227'8" -227'9"	298'6" -298'9"
32'2" -32'6"	111' -111'2"	171'7" -171'8"	230' -230'2"	301'2" -301'4"
-	-	-	-	-
42'6" -42'8"	116'10" -117'	172'8" -172'9"	234'11" -235'	304' -304'3"
43' -43'4"	118' -118'2"	174'10" -175'	237'6" -237'8"	305'3" -305'4"
46'7" -46'9"	122'10" -122'11"	176' -176'3"	240'2" -240'6"	307'10" -308'
48'11" -49'1"	124'10" -125'	181'1" -181'3"	245'6" -245'8"	308'4" -308'6"
-	-	-	-	-
53'7" -53'8"	128'8" -128'10"	182'10" -183'	254'10" -254'11"	309'11" -310'1"
57'2" -57'6"	135'10" -136'	183'5" -183'6"	260'6" -260'8"	313' -313'3"
63'9" -64'	143'4" -143'6"	185'8" -185'10"	264'8" -264'10"	316'6" -316'8"
64'9" -64'11"	145'10" -146'	188'6" -188'8"	266'6" -266'8"	319'8" -319'10"
-	-	-	-	-
69'9" -69'11"	148'9" -148'10"	189'3" -189'5"	268'10" -269'	323'4" -323'6"
77'6" -77'8"	-	190'2" -190'4"	275'1" -275'3"	324'8" -324'10"
79'4" -79'7"	-	194' -194'3"	275'9" -275'11"	330'7" -330'10"
-	-	-	279'5" -279'8"	-
-	-	-	-	-
-	-	-	-	-
-	-	-	-	-
-	-	-	-	-
-	-	-	-	-

Operator: Bear Creek Mining Co. ? Samples examined by: James W. Smith
 Farm: T. G. Hurt August 1961
 Well No.: 484
 Location: 750' SW of Free Union Church, Stony Point, Albemarle Co.
 Free Union Church is on the south side of Va. Secondary Hwy. 600,
 3,000' SE of the intersection of Va. Secondary Hwy. 600 and Prim. Hwy. 2

Elevation:

Total Depth: 497'

Drilling Commenced:

Well Completed:

Result:

GEOLOGIC LOG

Depth (Feet)

Lithology

Note: Very fine grained massive greenstone
 unless otherwise stated.

0-12'6"	No samples.
12'6"-13'6"	Light gray mottled light green.
13'6"-14'	Gray mottled green, occasional small bleb, red or blue.
14'-16'	Blue gray with black blebs averaging 2mm diameter.
16'-41'5"	Mottled blue-gray and light green, dark green to black blebs with light green border averaging 2mm, 27' - red and light green vein 7mm wide, 31'8" - hematite vein .5mm wide, 35'4" - few black amygdules averaging 4mm.
41'5"-77'6"	Greenstone composed of light green, green, black, and white mineral grains. Black blebs averaging 2mm, 42'6" - light blue coating on fractures, 43' - few amygdules of white quartz averaging 3mm, 46'6" - few amygdules white quartz averaging 3mm, 49'1" - little disseminated metallic yellow sulfide, 53'9" - little disseminated metallic yellow sulfide, 63'10" - 2 light green veins 1.5 and .5mm wide, 64'6" - black and light green vein .5mm wide with little metallic yellow sulfide, 65'3" - hematite vein .5mm wide, 68'5" - white quartz vein .3mm wide with little metallic yellow sulfide, 72'8" - several .2mm veins quartz-hematite.

- 77'6"-95' Greenstone composed of light green, green, black, and white minerals and few light green and black blebs averaging 2mm. , 79'5" - light blue quartz veinlet with little metallic yellow sulfide and hematite.
- 95'-97' Gray with blebs of white quartz averaging 2mm few smaller black and light green blebs.
- 97'-101'10" 80% gray with occasional blebs, white quartz averaging .5mm. 20% fine grained white, green, and red-brown minerals. 98' - trace metallic yellow sulfide, 98'8" - hematite veinlet and white quartz veinlet with little metallic yellow sulfide, 99'3" - few black amygdules, thin white border, .7mm average.
- 101'10"-108'6" Gray mottled light green, occasional dark green to black bleb, many veins of calcite, quartz, and hematite. (Hematite appears younger than calcite because calcite is brecciated and continuous veins of hematite pass through the breccia).
- 108'6"-145' Composed of light green and greenish gray minerals, occasional dark green to black bleb. 108'6" - composite veins of calcite, quartz, and hematite. Little metallic yellow sulfide, 110' - little metallic yellow sulfide in calcite veins, 122'10" - few amygdules, largely quartz in center with hematite forming thin discontinuous outside layer, 125' - few amygdules, largely quartz in center with hematite forming thin discontinuous outside layer, 125'10" - few amygdules, largely quartz in center with hematite forming thin discontinuous outside layer and epidote, hematite, calcite vein 4mm wide, 127' - few amygdules.
- 145'-147'8" Gray with occasional light green streaks and few small black blebs. 147'6" - calcite and hematite vein 1mm wide.
- 147'8"-148'5" Greenish gray mottled light green, few black blebs averaging .5mm.
- 148'5"-149'2" Gray with many amygdules with hematite and calcite centers coated with epidote, averaging 1.5mm.

VDMR Well No. 484

149'2"-156'	Gray with occasional light green streak, occasional white quartz blebs averaging 1.5mm and occasional small black bleb.
156'-162'	Gray mottled light green with small black blebs. 156'1" - thin vein calcite and hematite, 158'6" - thin vein calcite and hematite.
162'-167'6"	Light green with fine mottling of light gray. Disseminated fine grained calcite and hematite. 163' - thin vein calcite, 165'6" - thin vein quartz and hematite.
167'6"-171'2"	Greenish gray with few small black blebs and occasional light green streak.
171'2"-171'8"	Greenish gray with many blebs averaging 1.5mm and many light green blebs.
171'8"-173'6"	Greenish gray with few small black blebs and few small light green blebs. 172'8" - few thin veins quartz-calcite-hematite.
173'6"-175'4"	Gray with many blebs averaging 1mm, occasional thin green streak.
175'4"-181'	Mottled gray and light green, occasional black bleb averaging .5mm. 177' - calcite and hematite vein 5mm thick, 180'9" - calcite and hematite vein 3.5mm thick.
181'-181'3"	Mottled light and dark green with white quartz filled amygdules averaging 1.5mm.
181'3"-183'5"	Mottled gray and light green, occasional black bleb.
183'5"-185'10"	Largely light green mottled light blue gray, few quartz blebs. 185'6" - thin white quartz vein.
185'10"-188'10"	Light green mottled light blue gray.
188'10"-190'	Light green mottled light gray, with finely disseminated calcite and hematite.
190'-198'4"	Gray with many black amygdules averaging 1mm.
198'4"-207'8"	Gray with little light green and black blebs.

VDMR Well No. 484

207'8"-208'2"	Gray with many black amygdules averaging 1mm.
208'2"-229'4"	Greenish gray with occasional black blebs averaging .5mm. 209'8" - quartz-calcite-hematite vein with little metallic yellow sulfide. Vein 5mm wide. 226'4" - 2 calcite-quartz-hematite veins 2.5mm wide, 227'8" - few amygdules averaging 2.5mm, 229'2" - calcite-quartz-hematite vein 2.5mm thick.
229'4"-234'3"	Fine grained greenish gray with a few black blebs averaging 1mm.
234'3"-267'	Greenish gray with occasional black bleb averaging .5mm. 237'6" - 2.5mm thick hematite-calcite-quartz vein, 266'6" - 2 quartz-calcite-hematite veins 5mm thick and 14mm thick.
267'-293'6"	Grayish green. 267' - quartz-calcite-hematite vein 20mm thick, 283'6" - laminated quartz-calcite-hematite vein 4mm thick.
293'6"-299'11"	Greenish gray calcareous with occasional veinlet quartz-calcite-hematite.
299'11"-304'10"	Light grayish green with many black blebs averaging .5mm. 303'9" - quartz-calcite vein 7mm wide.
304'10"-309'6"	Greenish gray and grayish green breccia with quartz-calcite-hematite filling.
309'6"-373'6"	Greenish gray with many black blebs averaging .3mm. 319'8" - quartz-calcite-hematite vein 5mm thick, 330'1" - quartz-calcite-hematite vein 8mm thick, 337' - calcite vein 5mm thick, 337'8" - quartz-calcite-hematite vein 3mm thick, 342'1" - quartz-calcite-hematite vein 5mm thick, 342'6" - quartz-calcite-hematite vein 2mm thick.
373'6"-393'6"	Dark grayish green.
393'6"-402'3"	Dark green foliated with thin light gray layers, speckled white.
402'3"-404'	Light green foliated breccia with thin layers of hematite.
404'-404'11"	Light green greenstone-quartz-hematite breccia.

VDMR Well No. 484

404'11"-410'	Dark green and green foliated with thin light gray layers, speckled white.
410'-429'	Dark green speckled white.
429'-430'	Dark greenish gray with a few dark gray laminations.
430'-432'3"	Gray with white and black amygdules averaging 1mm.
432'3"-434'	Light green with white quartz amygdules averaging 1.5mm.
434'-435'	Light green with black blebs averaging .5mm.
435'-436'4"	Green with few black streaks.
436'4"-441'5"	Dark green.
441'5"-442'7"	Light greenish gray with white and black blebs averaging 1mm.
442'7"-446'2"	Dark grayish green.
446'2"-449'5"	Dark grayish green with few black amygdules averaging 2.5mm.
449'5"-456'7"	Dark grayish green.
456'7"-458'	Light grayish green.
458'-459'9"	Weathered brown.
459'9"-460'8"	Greenish gray.
460'8"-472'	Gray, many black and light green blebs averaging 1mm and many holes averaging 1mm (probably weathered blebs).
472'-474'	Gray, many light green blebs averaging .3mm.
474'-482'9"	Gray, occasional small black and green bleb. 476'6" - calcite vein 5mm thick.
482'9"-488'	Greenish gray few black and light green blebs averaging .5mm. 483' - quartz-calcite-hematite vein 3mm thick.

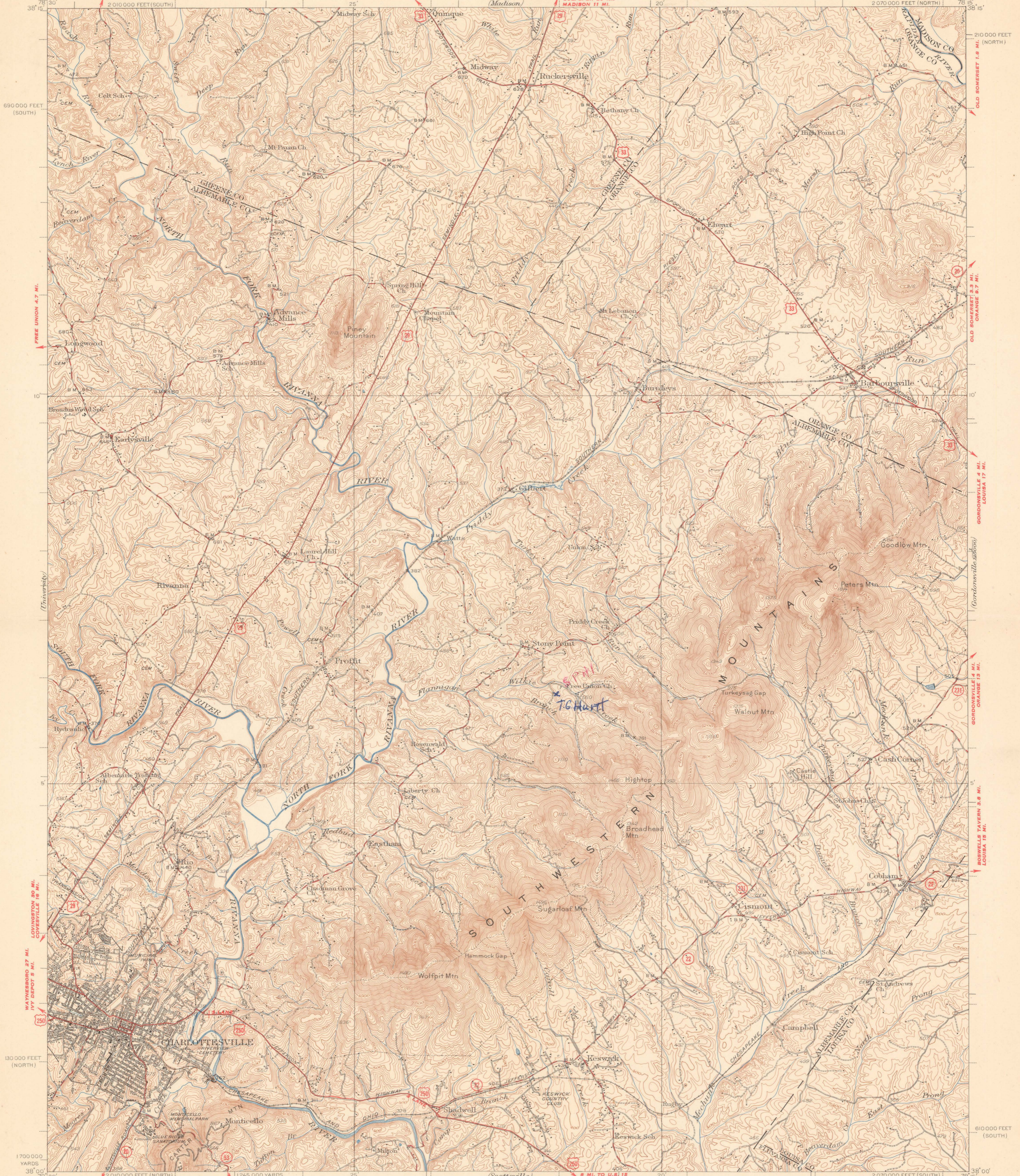
VDMR Well No. 484

488'-497'

Gray with many light green and occasional black
bleb averaging 1mm.

497'

Bottom



690 000 FEET (SOUTH)
2010 000 FEET (SOUTH)
130 000 FEET (NORTH)
1700 000 YARDS
2010 000 FEET (NORTH)
1245 000 YARDS
Scale 62500
Miles
Yards
Feet
Kilometers
Contour interval 20 feet
Datum is mean sea level

Topography by G.E. Sisson, H.B. Smith, A.G. England, and C.S. Maltby
Surveyed in 1935
Revised in 1949

ROAD CLASSIFICATION
HARD-SURFACE ALL WEATHER ROADS DRY WEATHER ROADS
Heavy-duty ——— 4 LANE LANE Improved dirt
Medium-duty ——— 4 LANE LANE Unimproved dirt
Loose-surface, graded, or narrow hard-surface - - - -
U. S. Route State Route

Polyconic projection, 1927 North American datum
5000 yard grid based on U.S. zone system, B
10000 foot grids based on Virginia (North) and
Virginia (South) rectangular coordinate systems

CHARLOTTEVILLE, VA.
Edition of 1935
reprinted 1950
with corrections
N3800-W7815/15

FOR SALE BY U. S. GEOLOGICAL SURVEY, WASHINGTON 25, D. C.
A FOLDER DESCRIBING TOPOGRAPHIC MAPS AND SYMBOLS IS AVAILABLE ON REQUEST