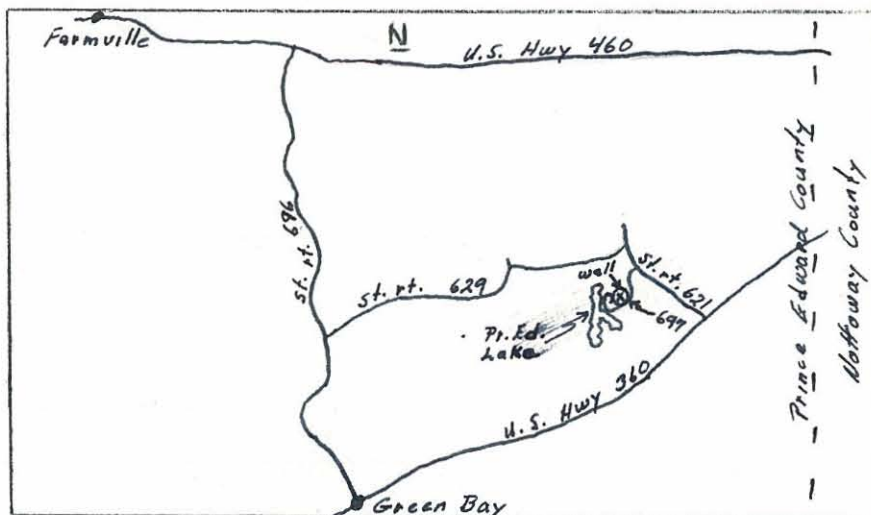


Log # 57 W # --- County Prince Edward - 1 Date 1/31/62

Owner Virginia Division of Parks #1 Use Public

Location In Prince Edward State Park, 200 yards <sup>(east)</sup> from Prince Edward Lake,  
approximately 3½ miles northeast of Green Bay.



Well Data

Driller: Mitchell Well & Pump Co.  
Completed: June 28, 1949  
Total Depth: 350' (driller)  
Static W. L.: 55' (logger 1/31/62)  
Casing: 87½ x 8" (driller)\*  
Bedrock: 105' (driller's log)  
Hole Size: 8" (driller)  
Yield: 10.87 (pump test 1949)  
H<sub>2</sub>O Temp: 56°F  
Aquifers: 224 & 350 (driller)  
Elev: 510' (topo.)  
Geology: Near contact of aporhyolite  
and Red Oak Granite.

Instrument Data

SP setting 100 Mv Approx. 45' /min.  
Res. " 200 Ohm-m " 45' /min.  
Gamma " .01 & .005 Mr " 34 & 40' /min.  
T. C. " 3 E, 10 G  
Fluid: Reservoir water in surface pit  
Running Time 1 Hrs, 0 Mins.  
Depth of Log: Elec. 234' Gamma 232'  
Ground Electrode in pit 20' from well

Remarks Well probably silted up to 234' (may be old foot valve at 234').  
Well has been cleaned out at least 3 times.  
Leather packers wear out 3 or 4 times a year.  
Approx. 225' of rod pulled - was 21' more originally.

Logged By DeKay & Gardner