



Commonwealth of Virginia
Department of Mines, Minerals, and Energy
Division of Gas and Oil
P.O. Box 1416, Abingdon, VA 24212
Telephone: (276) 676-5423

Tracking Number:	<u>1567</u>
Company:	<u>CNX Gas Company LLC</u>
File Number:	<u>TA-0526</u>
Operations Name:	<u>CBM AW133 W/PL</u>
Operation Type:	<u>Coalbed/Pipeline</u>
Drilling Report Type:	<u>Original</u>

DRILLING REPORT (DGO-GO-14)

1. Drilling Data

Date drilling commenced:	<u>6/2/2008</u>	Drilling Contractor:	<u>Noah Horn</u>
Date drilling completed:	<u>6/11/2008</u>	Rig Type:	<input checked="" type="checkbox"/> Rotary <input type="checkbox"/> Cable
Driller's Total Depth (feet):	<u>2525.00</u>		
Log Total Depth (feet):	<u>2495.26</u>	Coal Seam at Total Depth:	<u>Pocahontas</u>

2. Final Location Plat (as required by 4 VAC25-150-360.C.)

Permitted State Plane X:	<u>1021535.40</u>	Final Plat State Plane X:	<u>1021540.14</u>
Permitted State Plane Y:	<u>302970.50</u>	Final Plat State Plane Y:	<u>302964.86</u>

Plat Previously Submitted Or...

List of Attached Items:

Description	FileName
Plat	AW133 PLAT.pdf

3. Geological Data

Fresh Water At:

Depth (in feet)	Rate	Unit of Measure
1295	damp	

Salt Water At:

Depth (in feet)	Rate	Unit of Measure
2045	damp	

Coal Seams:

List of Attached Items:

Description	FileName
Exhibit A	AW133 EXHIBIT A.pdf

Gas and Oil Shows:

List of Attached Items:

Description	FileName
Gas Show	AW133 Gas Show.xls

4. Electric Logs (As required by 4VAC25-150-280.A)

List all logs run: caliper gamma density temp deviation

Did logs disclose vertical locations of a coal seam?

5. Survery Results (As required by 4VAC25-150-280.B.2)

List of Attached Items:

Description	FileName
Deviation	AW133 DEVIATION.pdf

6. Casing and Tubing Program

List of Attached Items:

Description	FileName
Casing	AW133 Casing.xls

7. Remarks

Use this space to note any conditions or occurrences, such as lost circulation, fishing jobs, junk left in hole, sidetracks, squeeze jobs, etc., not shown above. Include data and depth of condition/occurrence.

8. Drillers Log

Compiled By: Noah Horn

List of Attached Items:

Description	FileName
Drill Data	AW133 DRILL DATA.pdf

9. Comments

The Easterly coordinate has been corrected to that of the Plat. Thanks! [11/14/2008, DonnaHellas]
I believe the Easterly coordinate typed in differs from the final plat. Which one is correct?
[11/14/2008, rzc]

10. Signature

Permitee: CNX Gas Company LLC

Date: 11/14/2008

Signed By: Leslie Arrington

Title: Director Environmental Permitting

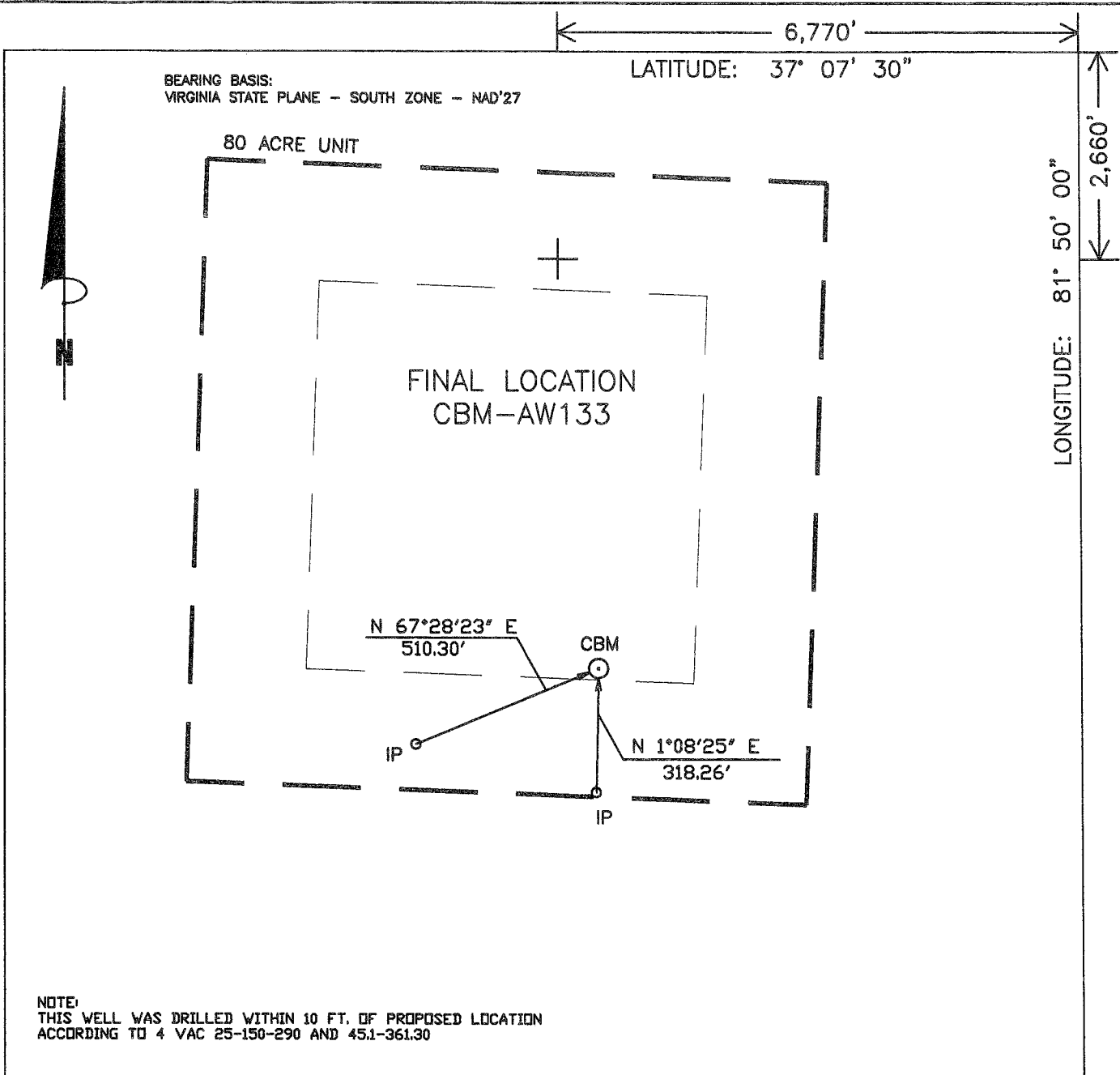
INTERNAL USE ONLY

Submit Date: 11/14/2008

Status: A

Date: 12/10/2008

Final PDF Date: 12/16/2008



WELL LOCATION PLAT

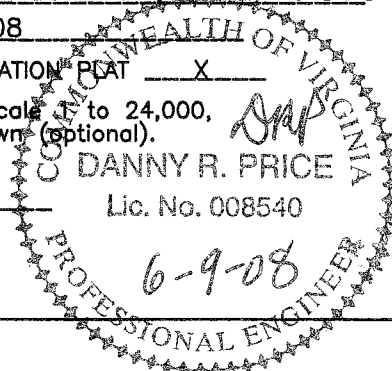
AW133FNL
RDASHCNX10/95-508/31

COMPANY CNX GAS COMPANY, LLC. WELL NAME OR NUMBER CBM-AW133
 TRACT NUMBER COAL CREEK QUADRANGLE RICHLANDS
 DISTRICT: MAIDEN SPRINGS

WELL COORDINATES (VIRGINIA STATE PLANE): N 302,964.86 E 1,021,540.14
 ELEVATION: 2706.01' METHOD USED TO DETERMINE ELEVATION: BY TRIG. LEVELS FROM CONSOL INC BM'S
 COUNTY TAZEWELL Scale: 1" = 400' Date 06-09-08
 THIS PLAT IS A NEW PLAT _____; AN UPDATED PLAT _____; OR A FINAL LOCATION PLAT X

+ Denotes the location of a well on United States Topographic Maps, scale 1" to 24,000, latitude and longitude lines being represented by border lines as shown (optional).

Danny R. Price
 Licensed Professional Engineer or Licensed Land Surveyor (Affix Seal) Lic. No. 008540



AW133.CMP
Exhibit A

Well Name: 08 CBM AW133
SURFACE ELEV: 2703.89 EASTING: 1021535.39 NORTHING: 302970.50

SEAM	DEPTH FROM (FT)	DEPTH TO (FT)	ELEVATION (TOSE)	THK. (FT)	REMARKS
COAL	171.90	172.10	2531.99	0.20	
	172.10	191.20	2531.79	19.10	
AL1	191.20	192.10	2512.69	0.90	
	192.10	299.00	2511.79	106.90	
RA1	299.00	299.90	2404.89	0.90	
	299.90	358.00	2403.99	58.10	
RA2	358.00	360.30	2345.89	2.30	
	360.30	374.00	2343.59	13.70	
COAL	374.00	374.30	2329.89	0.30	
	374.30	504.00	2329.59	129.70	
JB1	504.00	505.00	2199.89	1.00	
	505.00	567.50	2198.89	62.50	
JB3	567.50	570.20	2136.39	2.70	
	570.20	609.30	2133.69	39.10	
T2	609.30	610.20	2094.59	0.90	
	610.20	673.90	2093.69	63.70	
TI	673.90	674.40	2029.99	0.50	
	674.40	882.80	2029.49	208.40	
*LC1	882.80	883.20	1821.09	0.40	
	883.20	883.90	1820.69	0.70	
*LC2	883.90	885.10	1819.99	1.20	
	885.10	892.00	1818.79	6.90	
*LC3	892.00	893.90	1811.89	1.90	
	893.90	895.90	1809.99	2.00	
*LC4	895.90	896.25	1807.99	0.35	
	896.25	1034.50	1807.64	138.25	
*GC1	1034.50	1034.80	1669.39	0.30	
	1034.80	1078.70	1669.09	43.90	
*GC2	1078.70	1079.60	1625.19	0.90	
	1079.60	1179.10	1624.29	99.50	
*SE2	1179.10	1180.60	1524.79	1.50	
	1180.60	1236.30	1523.29	55.70	
*LS1	1236.30	1238.60	1467.59	2.30	
	1238.60	1267.20	1465.29	28.60	
*LS3	1267.20	1267.30	1436.69	0.10	
	1267.30	1333.90	1436.59	66.60	
*UH1	1333.90	1334.70	1369.99	0.80	
	1334.70	1361.30	1369.19	26.60	
*UH2	1361.30	1361.90	1342.59	0.60	
	1361.90	1362.70	1341.99	0.80	
*UH3	1362.70	1363.80	1341.19	1.10	
	1363.80	1415.90	1340.09	52.10	
*MH1	1415.90	1416.40	1287.99	0.50	
	1416.40	1489.20	1287.49	72.80	
*MH2	1489.20	1491.00	1214.69	1.80	
	1491.00	1533.80	1212.89	42.80	
*P11	1533.80	1536.20	1170.09	2.40	
	1536.20	1557.00	1167.69	20.80	
*P10	1557.00	1557.70	1146.89	0.70	
	1557.70	1637.10	1146.19	79.40	
*LH3	1637.10	1638.10	1066.79	1.00	
	1638.10	1663.80	1065.79	25.70	
*P91	1663.80	1665.90	1040.09	2.10	
	1665.90	1711.00	1037.99	45.10	
*P81	1711.00	1711.90	992.89	0.90	
	1711.90	1742.20	991.99	30.30	

AW133.CMP

*P71	1742.20	1743.30	961.69	1.10
	1743.30	1744.90	960.59	1.60
*COAL	1744.90	1745.00	958.99	0.10
	1745.00	1809.00	958.89	64.00
*COAL	1809.00	1809.10	894.89	0.10
	1809.10	1814.20	894.79	5.10
*COAL	1814.20	1814.95	889.69	0.75
	1814.95	1879.90	888.94	64.95
*COAL	1879.90	1880.00	823.99	0.10
	1880.00	1893.70	823.89	13.70
*COAL	1893.70	1893.90	810.19	0.20
	1893.90	1907.50	809.99	13.60
*COAL	1907.50	1907.80	796.39	0.30
	1907.80	1983.60	796.09	75.80
*P61	1983.60	1983.90	720.29	0.30
	1983.90	2029.60	719.99	45.70
*P51	2029.60	2030.30	674.29	0.70
	2030.30	2135.30	673.59	105.00
*P41	2135.30	2138.00	568.59	2.70
	2138.00	2222.00	565.89	84.00
*P31	2222.00	2226.20	481.89	4.20
	2226.20	2385.10	477.69	158.90
*P01	2385.10	2385.40	318.79	0.30
	2385.40	2459.70	318.49	74.30
*SJ1	2459.70	2460.50	244.19	0.80
	2460.50	2525.00	243.39	64.50

COAL SEAMS TO BE STIMULATED WERE ADJUSTED DUE TO TOPOGRAPHY
AND DUE TO THE WELL'S PROXIMITY TO WATER WELL AV133-6.

GAMMA-CALIPER LOG FROM 0 TO 444.20

GAMMA-DENSITY LOG FROM 444.20 TO TD.

NOTE: FOOTAGE NOT ADJUSTED FOR DEVIATION

FILE: H:\JIMHAZ~1\PROJECTS\GAS\AW133.CMP

DATE: 06/19/08

Well: AW133

Oil & Gas Show

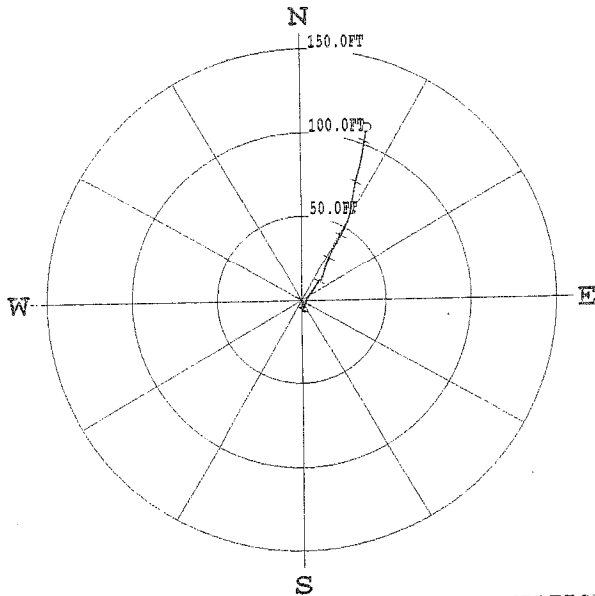
Formation	Top	Bottom	Thickness	IPF (MCFD/BOPD)	Pressure	Hours Tested
Lee/Norton	883.9	1665.9	782			
Pocahontas	1742.2	2226.2	484			
Total IPF			0	NOT TAKEN		

PLAN VIEW COMPU-LOG DEVIATION

CLIENT: Consol Energy
 LOCATION:
 HOLE ID: 08-CNX-AW-133
 DATE OF LOG: 06/10/08
 PROBE: 9136CA 955



SCALE: 50 FT/LN
 TRUE DEPTH: 2480.50 FT
 AZIMUTH: 20.9
 DISTANCE: 109.9 FT
 + = 300 FT INCR
 ○ = BOTTOM OF HOLE



* * * * * COMPU-LOG - VERTICAL DEVIATION * * * * *

CLIENT : Consol Energy	HOLE ID. : 08-CNX-AW-133
FIELD OFFICE :	DATE OF LOG : 06/10/08
DATA FROM :	PROBE : 9136CA , 955
MAG. DECL. : -6.900	DEPTH UNITS : FEET
LOG: 08-CNX-AW-133_06-10-08_18-48_9136CA_02_-0.02_2484.69_DEVI.log	

CABLE DEPTH	TRUE DEPTH	NORTH DEV.	EAST DEV.	DISTANCE	AZIMUTH	SANG	SANGE
50.0	49.98	-0.73	0.42	0.8	150.2	1.9	139.7
60.0	59.97	-1.03	0.54	1.2	152.2	1.9	168.9
70.0	69.97	-1.34	0.46	1.4	161.0	1.9	210.3
80.0	79.96	-1.63	0.29	1.7	169.8	1.9	203.1
90.0	89.95	-1.95	0.26	2.0	172.3	1.9	166.2
100.0	99.95	-2.27	0.36	2.3	170.8	1.9	163.5
110.0	109.94	-2.57	0.49	2.6	169.2	1.9	159.8
120.0	119.94	-2.88	0.60	2.9	168.2	1.9	156.3
130.0	129.93	-3.20	0.69	3.3	167.9	1.9	171.4
140.0	139.93	-3.53	0.66	3.6	169.5	1.9	204.2
150.0	149.92	-3.82	0.51	3.9	172.4	1.9	215.9
160.0	159.92	-4.10	0.32	4.1	175.6	1.9	206.2
170.0	169.91	-4.40	0.17	4.4	177.8	1.9	207.5
180.0	179.90	-4.66	-0.03	4.7	180.4	2.0	229.8
190.0	189.90	-4.90	-0.27	4.9	183.2	1.9	230.3
200.0	199.89	-5.07	-0.56	5.1	186.3	2.0	245.6
210.0	209.89	-5.11	-0.88	5.2	189.7	2.0	299.1
220.0	219.88	-4.82	-0.93	4.9	190.9	1.9	40.1
230.0	229.88	-4.77	-0.63	4.8	187.5	1.9	91.8
240.0	239.87	-4.81	-0.30	4.8	183.6	1.9	90.8
250.0	249.86	-4.87	0.00	4.9	180.0	1.9	120.5
260.0	259.86	-4.98	0.30	5.0	176.5	1.8	113.3
270.0	269.85	-5.19	0.54	5.2	174.0	1.9	143.4
280.0	279.85	-5.42	0.77	5.5	171.9	1.9	137.3
290.0	289.84	-5.65	0.94	5.7	170.6	1.6	129.6
300.0	299.84	-5.90	1.08	6.0	169.6	1.7	150.7
310.0	309.84	-6.16	1.23	6.3	168.7	1.7	150.3
320.0	319.83	-6.41	1.39	6.6	167.8	1.7	137.4
330.0	329.83	-6.69	1.54	6.9	167.0	1.9	130.0
340.0	339.82	-6.89	1.80	7.1	165.4	1.9	117.9
350.0	349.81	-6.92	2.10	7.2	163.2	2.0	18.6
360.0	359.81	-6.64	2.15	7.0	162.1	2.0	275.2
370.0	369.80	-6.66	1.81	6.9	164.8	2.0	250.9
380.0	379.80	-6.64	1.49	6.8	167.4	2.0	315.7
390.0	389.79	-6.58	1.20	6.7	169.6	2.0	245.6

240.0	239.81	-4.81	0.00	4.9	180.0	1.9	120.5
250.0	249.86	-4.98	0.30	5.0	176.5	1.8	113.3
260.0	259.86	-5.19	0.54	5.2	174.0	1.9	143.4
270.0	269.85	-5.42	0.77	5.5	171.9	1.9	137.3
280.0	279.85	-5.65	0.94	5.7	170.6	1.6	129.6
290.0	289.84	-5.90	1.08	6.0	169.6	1.7	150.7
300.0	299.84	-6.16	1.23	6.3	168.7	1.7	150.3
310.0	309.84	-6.41	1.39	6.6	167.8	1.7	137.4
320.0	319.83	-6.69	1.54	6.9	167.0	1.9	133.9
330.0	329.83	-6.89	1.80	7.1	165.4	1.9	117.9
340.0	339.82	-6.92	2.10	7.2	163.2	2.0	18.6
350.0	349.81	-6.64	2.15	7.0	162.1	2.0	275.2
360.0	359.81	-6.66	1.81	6.9	164.8	2.0	250.9
370.0	369.80	-6.64	1.49	6.8	167.4	2.0	315.7
380.0	379.80	-6.58	1.20	6.7	169.6	2.0	245.6
390.0	389.79	-6.62	0.87	6.7	172.5	2.0	287.9
400.0	399.78	-6.61	0.56	6.6	175.2	2.0	235.5
410.0	409.78	-6.76	0.25	6.8	177.9	2.0	247.2
420.0	419.77	-6.74	0.36	6.8	176.9	1.3	143.7
430.0	429.77	-6.76	0.46	6.8	176.1	1.4	16.5
440.0	439.77	-6.79	0.53	6.8	175.5	1.2	348.1
450.0	449.76	-6.64	0.63	6.7	174.5	1.5	67.3
460.0	459.76	-6.44	0.79	6.5	173.0	1.6	12.7
470.0	469.76	-6.17	0.88	6.2	171.9	1.8	23.6
480.0	479.75	-5.89	0.99	6.0	170.4	1.7	18.9
490.0	489.75	-5.60	1.11	5.7	168.8	1.8	43.4
500.0	499.74	-5.30	1.23	5.4	166.9	2.0	31.3
510.0	509.74	-4.99	1.35	5.2	164.9	2.0	21.8
520.0	519.73	-4.67	1.45	4.9	162.7	1.8	13.3
530.0	529.73	-4.34	1.58	4.6	160.0	2.3	18.8
540.0	539.72	-4.02	1.70	4.4	157.1	2.0	19.2
550.0	549.71	-3.69	1.80	4.1	154.0	2.1	5.7
560.0	559.71	-3.32	1.91	3.8	150.1	2.0	20.6
570.0	569.70	-2.98	2.06	3.6	145.3	2.2	40.2
580.0	579.69	-2.62	2.18	3.4	140.3	2.1	16.6
590.0	589.69	-2.27	2.35	3.3	134.0	2.3	25.1
600.0	599.68	-1.91	2.46	3.1	127.8	2.1	21.6
610.0	609.67	-1.53	2.61	3.0	120.4	2.3	20.6
620.0	619.66	-1.17	2.72	3.0	113.3	2.1	23.7
630.0	629.66	-0.82	2.89	3.0	105.9	2.2	12.3
640.0	639.65	-0.45	3.01	3.0	98.5	2.3	19.6
650.0	649.64	-0.13	3.22	3.2	92.3	2.3	29.2
660.0	659.63	0.23	3.40	3.4	86.1	2.2	22.3
670.0	669.62	0.59	3.57	3.6	80.6	2.5	29.9
680.0	679.62	0.99	3.79	3.9	75.4	2.7	29.2
690.0	689.61	1.44	4.03	4.3	70.4	3.0	31.0
700.0	699.59	1.84	4.23	4.6	66.5	2.6	37.7
710.0	709.58	2.24	4.50	5.0	63.5	3.0	33.4
720.0	719.57	2.66	4.76	5.5	60.8	2.8	34.0
730.0	729.56	3.06	5.04	5.9	58.7	2.7	36.8
740.0	739.55	3.42	5.34	6.3	57.4	2.8	39.0
750.0	749.53	3.83	5.67	6.8	56.0	3.1	36.8
760.0	759.52	4.26	5.98	7.3	54.5	3.1	37.9
770.0	769.51	4.69	6.31	7.9	53.4	3.1	37.3
780.0	779.49	5.14	6.63	8.4	52.2	3.3	36.9
790.0	789.48	5.61	6.95	8.9	51.1	3.2	37.7
800.0	799.46	6.06	7.26	9.5	50.1	3.4	42.1
810.0	809.45	6.56	7.62	10.1	49.3	3.5	34.9
820.0	819.43	7.08	7.92	10.6	48.2	3.5	30.1
830.0	829.41	7.62	8.23	11.2	47.2	3.6	36.4
840.0	839.39	8.14	8.62	11.9	46.7	3.7	37.5
850.0	849.37	8.65	8.99	12.5	46.1	3.6	33.5
860.0	859.35	9.17	9.33	13.1	45.5	3.4	33.5
870.0	869.33	9.64	9.68	13.7	45.1	3.4	52.0
880.0	879.31	10.09	10.02	14.2	44.8	3.3	38.6
890.0	889.30	10.60	10.32	14.8	44.2	3.4	23.8
900.0	899.28	11.09	10.68	15.4	43.9	3.5	39.2
910.0	909.26	11.43	11.10	15.9	44.2	3.4	151.0
920.0	919.24	11.15	10.97	15.6	44.5	2.7	61.4
930.0	929.23	11.12	11.42	15.9	45.8	3.9	114.1
940.0	939.21	11.55	11.81	16.5	45.6	3.5	20.6
950.0	949.19	12.14	11.93	17.0	44.5	3.6	354.9
960.0	959.17	12.72	12.13	17.6	43.6	3.8	44.0
970.0	969.15	13.22	12.54	18.2	43.5	3.5	29.5

960.0	959.17	12.14	11.93	17.0	44.5	3.6	354.9
970.0	969.15	12.72	12.13	17.6	43.6	3.8	44.0
980.0	979.13	13.22	12.54	18.2	43.5	3.5	29.5
990.0	989.11	13.77	12.73	18.8	42.7	3.5	16.6
1000.0	999.09	14.35	12.93	19.3	42.0	3.5	20.6
1010.0	1009.07	14.90	13.15	19.9	41.4	3.4	23.0
1020.0	1019.06	15.43	13.34	20.4	40.8	3.1	15.9
1030.0	1029.04	15.98	13.47	20.9	40.1	3.0	12.3
1040.0	1039.03	16.49	13.63	21.4	39.6	3.2	12.0
1050.0	1049.01	17.03	13.74	21.9	38.9	3.1	5.7
1060.0	1059.00	17.57	13.89	22.4	38.3	3.0	16.5
1070.0	1068.98	18.07	14.04	22.9	37.9	3.1	15.9
1080.0	1078.97	18.61	14.20	23.4	37.3	3.4	23.5
1090.0	1088.95	19.16	14.37	23.9	36.9	3.2	13.1
1100.0	1098.93	19.72	14.51	24.5	36.4	3.3	16.2
1110.0	1108.92	20.26	14.69	25.0	35.9	3.2	18.5
1120.0	1118.90	20.79	14.87	25.6	35.6	3.3	19.9
1130.0	1128.89	21.32	15.08	26.1	35.3	3.2	13.5
1140.0	1138.87	21.83	15.26	26.6	34.9	3.0	14.7
1150.0	1148.86	22.30	15.45	27.1	34.7	2.8	16.1
1160.0	1158.85	22.76	15.59	27.6	34.4	2.9	27.8
1170.0	1168.83	23.22	15.83	28.1	34.3	2.9	22.4
1180.0	1178.82	23.66	16.03	28.6	34.1	2.8	19.1
1190.0	1188.81	24.17	16.19	29.1	33.8	3.2	14.9
1200.0	1198.79	24.69	16.40	29.6	33.6	3.1	18.4
1210.0	1208.78	25.17	16.60	30.1	33.4	2.9	24.9
1220.0	1218.76	25.63	16.78	30.6	33.2	2.8	19.5
1230.0	1228.75	26.08	16.93	31.1	33.0	2.7	18.3
1240.0	1238.74	26.55	17.09	31.6	32.8	2.9	19.3
1250.0	1248.73	27.02	17.28	32.1	32.6	2.8	16.2
1260.0	1258.72	27.48	17.46	32.6	32.4	2.9	19.7
1270.0	1268.70	27.91	17.67	33.0	32.3	2.6	21.2
1280.0	1278.69	28.33	17.86	33.5	32.2	2.8	23.8
1290.0	1288.68	28.77	18.05	34.0	32.1	2.6	21.5
1300.0	1298.67	29.17	18.27	34.4	32.1	2.5	25.2
1310.0	1308.66	29.55	18.49	34.9	32.0	2.6	28.0
1320.0	1318.65	29.96	18.69	35.3	32.0	2.9	29.0
1330.0	1328.64	30.39	18.93	35.8	31.9	2.7	37.6
1340.0	1338.63	30.44	18.82	35.8	31.7	2.1	317.2
1350.0	1348.62	30.44	19.07	35.9	32.1	3.3	23.3
1360.0	1358.60	30.93	19.41	36.5	32.1	3.4	32.1
1370.0	1368.58	31.42	19.68	37.1	32.1	3.2	29.5
1380.0	1378.57	31.90	19.99	37.6	32.1	3.3	31.2
1390.0	1388.55	32.39	20.29	38.2	32.1	3.2	33.6
1400.0	1398.53	32.85	20.61	38.8	32.1	3.0	31.3
1410.0	1408.52	33.28	20.90	39.3	32.1	3.0	37.3
1420.0	1418.51	33.73	21.17	39.8	32.1	3.4	25.6
1430.0	1428.49	34.27	21.46	40.4	32.1	3.5	29.3
1440.0	1438.47	34.81	21.72	41.0	32.0	3.5	25.9
1450.0	1448.45	35.36	22.00	41.6	31.9	3.5	28.0
1460.0	1458.43	35.88	22.29	42.2	31.8	3.4	29.0
1470.0	1468.41	36.40	22.56	42.8	31.8	3.4	29.1
1480.0	1478.40	36.90	22.85	43.4	31.8	3.3	26.3
1490.0	1488.38	37.43	23.12	44.0	31.7	3.5	27.7
1500.0	1498.36	37.98	23.40	44.6	31.6	3.6	26.1
1510.0	1508.34	38.53	23.72	45.2	31.6	3.7	29.2
1520.0	1518.32	39.08	24.00	45.9	31.6	3.5	24.5
1530.0	1528.30	39.63	24.26	46.5	31.5	3.6	33.3
1540.0	1538.28	40.18	24.52	47.1	31.4	3.4	40.0
1550.0	1548.27	40.41	24.52	47.3	31.3	2.4	309.3
1560.0	1558.25	40.63	24.78	47.6	31.4	3.5	22.6
1570.0	1568.23	41.16	25.06	48.2	31.3	3.4	27.5
1580.0	1578.21	41.68	25.33	48.8	31.3	3.4	29.7
1590.0	1588.20	42.22	25.57	49.4	31.2	3.4	24.4
1600.0	1598.18	42.75	25.84	50.0	31.2	3.3	28.4
1610.0	1608.16	43.26	26.08	50.5	31.1	3.1	23.6
1620.0	1618.15	43.76	26.32	51.1	31.0	3.3	25.1
1630.0	1628.13	44.27	26.55	51.6	31.0	3.2	24.7
1640.0	1638.12	44.76	26.81	52.2	30.9	3.0	16.9
1650.0	1648.10	45.30	26.98	52.7	30.8	3.7	24.9
1660.0	1658.08	45.83	27.22	53.3	30.7	3.2	24.7
1670.0	1668.07	46.34	27.40	53.8	30.6	2.9	17.6
1680.0	1678.06	46.82	27.56	54.3	30.5	2.9	19.5
1690.0	1688.04	47.31	27.72	54.8	30.4	3.0	17.8

1600.0	1598.18	42.75	25.84	50.0	31.1	3.1	23.6
1610.0	1608.16	43.26	26.08	50.5	31.0	3.3	25.1
1620.0	1618.15	43.76	26.32	51.1	31.0	3.2	24.7
1630.0	1628.13	44.27	26.55	51.6	30.9	3.0	16.9
1640.0	1638.12	44.76	26.81	52.2	30.8	3.7	24.9
1650.0	1648.10	45.30	26.98	52.7	30.7	3.2	24.7
1660.0	1658.08	45.83	27.22	53.3	30.6	2.9	17.6
1670.0	1668.07	46.34	27.40	53.8	30.5	2.9	19.5
1680.0	1678.06	46.82	27.56	54.3	30.4	3.0	17.8
1690.0	1688.04	47.31	27.73	54.8	30.3	3.1	31.2
1700.0	1698.03	47.81	27.91	55.4	30.2	3.2	10.4
1710.0	1708.01	48.32	28.07	55.9	30.0	3.4	16.6
1720.0	1718.00	48.88	28.22	56.4	29.9	3.4	19.8
1730.0	1727.98	49.46	28.40	57.0	29.7	3.5	12.7
1740.0	1737.96	50.03	28.56	57.6	29.5	3.6	10.8
1750.0	1747.94	50.65	28.67	58.2	29.4	3.4	12.5
1760.0	1757.92	51.23	28.84	58.8	29.2	3.6	15.1
1770.0	1767.90	51.85	28.97	59.4	29.0	3.4	13.9
1780.0	1777.88	52.45	29.11	60.0	28.9	3.4	11.2
1790.0	1787.87	53.02	29.25	60.6	28.7	3.3	358.8
1800.0	1797.85	53.60	29.39	61.1	28.6	3.1	13.2
1810.0	1807.83	54.15	29.46	61.6	28.4	3.3	12.3
1820.0	1817.82	54.69	29.56	62.2	28.3	3.1	356.2
1830.0	1827.80	55.04	29.66	62.5	28.2	3.0	10.4
1840.0	1837.79	55.36	29.73	62.8	28.1	3.0	8.2
1850.0	1847.78	55.86	29.78	63.3	27.9	3.1	12.3
1860.0	1857.76	56.37	29.87	63.8	27.8	2.9	7.5
1870.0	1867.75	56.88	29.95	64.3	27.6	3.0	15.0
1880.0	1877.74	57.39	30.06	64.8	27.6	2.9	251.7
1890.0	1887.72	57.73	30.18	65.1	27.5	3.1	7.5
1900.0	1897.71	58.04	30.17	65.4	27.3	3.2	8.2
1910.0	1907.69	58.59	30.28	66.0	27.2	3.2	7.3
1920.0	1917.68	59.14	30.34	66.5	27.0	3.1	8.7
1930.0	1927.66	59.70	30.42	67.0	26.9	3.2	8.9
1940.0	1937.65	60.24	30.49	67.5	26.7	3.3	10.4
1950.0	1947.63	60.79	30.61	68.1	26.6	3.4	11.0
1960.0	1957.61	61.36	30.71	68.6	26.4	3.5	9.7
1970.0	1967.60	61.95	30.82	69.2	26.3	3.5	11.4
1980.0	1977.58	62.55	30.92	69.8	26.2	3.5	11.5
1990.0	1987.56	63.15	31.03	70.4	26.0	3.5	11.4
2000.0	1997.54	63.75	31.15	71.0	25.9	3.6	13.0
2010.0	2007.52	64.35	31.28	71.5	25.8	3.5	9.0
2020.0	2017.50	64.95	31.38	72.1	25.7	3.5	11.3
2030.0	2027.48	65.56	31.51	72.7	25.5	3.5	11.0
2040.0	2037.47	66.16	31.62	73.3	25.4	3.5	11.1
2050.0	2047.45	66.77	31.73	73.9	25.3	3.7	12.5
2060.0	2057.43	67.38	31.84	74.5	25.2	3.7	9.6
2070.0	2067.41	68.02	31.97	75.2	25.1	3.9	16.6
2080.0	2077.38	68.66	32.11	75.8	24.9	3.8	15.4
2090.0	2087.36	69.30	32.23	76.4	24.8	3.9	6.5
2100.0	2097.34	69.95	32.37	77.1	24.7	3.9	10.4
2110.0	2107.32	70.63	32.54	77.8	24.6	4.0	13.3
2120.0	2117.29	71.29	32.69	78.4	24.5	4.2	15.8
2130.0	2127.27	71.98	32.85	79.1	24.5	3.8	0.4
2140.0	2137.24	72.65	33.04	79.8	24.3	4.0	14.8
2150.0	2147.22	73.31	33.17	80.5	24.3	3.9	10.8
2160.0	2157.20	73.97	33.33	81.1	24.2	3.7	16.4
2170.0	2167.17	74.61	33.54	81.8	24.1	4.0	202.8
2180.0	2177.15	75.01	33.61	82.2	24.1	4.2	17.9
2190.0	2187.12	75.64	33.85	82.9	24.0	4.3	15.3
2200.0	2197.10	76.34	34.06	83.6	24.0	4.4	17.7
2210.0	2207.07	77.07	34.28	84.3	23.9	4.4	13.7
2220.0	2217.04	77.80	34.51	85.1	23.8	4.7	13.6
2230.0	2227.01	78.55	34.71	85.9	23.8	5.0	15.4
2240.0	2236.97	79.37	34.93	86.7	23.6	5.2	10.2
2250.0	2246.93	80.24	35.12	87.6	23.5	5.2	14.7
2260.0	2256.89	81.13	35.33	88.5	23.4	5.2	11.1
2270.0	2266.85	82.01	35.51	89.4	23.3	5.4	12.2
2280.0	2276.81	82.92	35.70	90.3	23.2	5.4	9.4
2290.0	2286.76	83.84	35.87	91.2	23.0	5.5	12.8
2300.0	2296.72	84.77	36.05	92.1	22.9	5.4	11.6
2310.0	2306.67	85.71	36.26	93.1	22.8	5.8	11.5
2320.0	2316.62	86.67	36.44	94.0	22.7	5.7	11.0
2330.0	2326.57	87.65	36.65	95.0	22.6	5.8	11.6

2210.0	2207.07	77.07	34.28	84.3	24.0	4.4	17.7
2220.0	2217.04	77.80	34.51	85.1	23.9	4.4	13.7
2230.0	2227.01	78.55	34.71	85.9	23.8	4.7	13.6
2240.0	2236.97	79.37	34.93	86.7	23.8	5.0	15.4
2250.0	2246.93	80.24	35.12	87.6	23.6	5.2	10.2
2260.0	2256.89	81.13	35.33	88.5	23.5	5.2	14.7
2270.0	2266.85	82.01	35.51	89.4	23.4	5.2	11.1
2280.0	2276.81	82.92	35.70	90.3	23.3	5.4	12.2
2290.0	2286.76	83.84	35.87	91.2	23.2	5.4	9.4
2300.0	2296.72	84.77	36.05	92.1	23.0	5.5	12.8
2310.0	2306.67	85.71	36.26	93.1	22.9	5.4	11.6
2320.0	2316.62	86.67	36.44	94.0	22.8	5.8	11.5
2330.0	2326.57	87.65	36.65	95.0	22.7	5.7	11.0
2340.0	2336.52	88.63	36.80	96.0	22.6	5.8	11.6
2350.0	2346.47	89.62	36.99	97.0	22.4	5.6	7.8
2360.0	2356.42	90.60	37.16	97.9	22.3	5.8	8.2
2370.0	2366.37	91.57	37.31	98.9	22.2	5.6	7.5
2380.0	2376.33	92.53	37.51	99.8	22.1	5.6	13.8
2390.0	2386.28	93.51	37.68	100.8	21.9	5.9	8.4
2400.0	2396.23	94.49	37.85	101.8	21.8	5.5	8.4
2410.0	2406.18	95.46	38.01	102.7	21.7	5.7	8.0
2420.0	2416.13	96.43	38.16	103.7	21.6	5.5	8.8
2430.0	2426.08	97.38	38.32	104.7	21.5	5.6	12.7
2440.0	2436.04	98.33	38.51	105.6	21.4	5.5	3.2
2450.0	2445.99	99.28	38.61	106.5	21.3	5.6	8.4
2460.0	2455.94	100.25	38.77	107.5	21.1	5.5	14.7
2470.0	2465.89	101.17	39.02	108.4	21.1	5.9	30.5
2480.0	2475.84	102.14	39.17	109.4	21.0	5.8	11.4
2484.7	2480.52	102.61	39.24	109.9	20.9	0.0	0.0

COMPANY CNX
 HOLE AW-133
 RIG #: 17
 LOCATION: RED ROOT RIDGE
 DATE STARTED: 6/2/2008
 DATE COMPLETED: 6/11/2008
 ELECTRIC LOGGED: YES
 GROUTED: YES

DEPTH FROM	THICKNESS TO	FT	STRATA DESCRIPTION, VOIDS ETC.
0	39		39 BROWNSAND
39	70		31 SAND/COAL/SHALE
70	100		30 COAL/SAND/SHALE
100	130		30 SAND/SHALE
130	160		30 SHALE/SAND
160	190		30 SAND/COAL/SHALE
190	220		30 SAND/SHALE
220	250		30 SAND/SHALE
250	280		30 SHALE/SAND
280	310		30 SAND/COAL/SHALE
310	340		30 SAND/SHALE
340	370		30 SAND/COAL/SHALE
370	400		30 SAND/SHALE
400	430		30 SAND/SHALE
430	465		35 SHALE/SAND
465	480		15 SAND/SHALE
480	510		30 SAND/SHALE/COAL
510	540		30 SAND/SHALE
540	570		30 SAND/SHALE/COAL
570	600		30 SAND/SHALE
600	630		30 SAND/SHALE/COAL
630	660		30 SAND/SHALE
660	785		125 SAND/SHALE
785	815		30 SAND/SHALE/COAL
815	845		30 SAND/SHALE
845	875		30 SHALE/SAND
875	905		30 SAND/COAL/SHALE
905	935		30 SAND/COAL/SHALE
935	965		30 SAND/SHALE
965	995		30 SHALE/SAND
995	1025		30 SAND/COAL/SHALE
1025	1055		30 SHALE/SAND
1055	1085		30 SAND/COAL/SHALE
1085	1115		30 SAND/COAL/SHALE

1115	1145	30 SAND/COAL/SHALE
1145	1175	30 SAND/COAL/SHALE
1175	1235	60 SHALE/COAL/SAND
1235	1265	30 SAND/COAL/SHALE
1265	1295	30 SAND/SHALE
1295	1325	30 SAND/SANDY SHALE
1325	1355	30 SANDY SHALE/SAND
1355	1385	30 SAND
1385	1415	30 SANDY SHALE/COAL
1415	1445	30 SANDY SHALE/SAND
1445	1475	30 SAND/SANDY SHALE
1475	1505	30 SANDY SHALE/SAND
1505	1535	30 SAND/SANDY SHALE
1535	1565	30 SANDY SHALE/SAND
1565	1595	30 SAND/SANDY SHALE
1595	1625	30 SANDY SHALE/SAND
1625	1655	30 SAND
1655	1685	30 SANDY SHALE/COAL
1685	1715	30 SAND/SANDY SHALE
1715	1745	30 SANDY SHALE/SAND
1745	1775	30 SANDY SHALE/SAND
1775	1805	30 SAND/COAL/SHALE
1805	1835	30 COAL/SAND/SHALE
1835	1865	30 SAND/SHALE
1865	1895	30 SAND/SHALE
1895	1925	30 SAND/COAL/SHALE
1925	1955	30 SHALE/SAND/COAL
1955	1985	30 SHALE/SAND/COAL
1985	2015	30 SAND/COAL/SHALE
2015	2045	30 SAND/COAL/SHALE
2045	2075	30 SAND/SHALE
2075	2105	30 SAND/SHALE
2105	2135	30 SAND/COAL/SHALE
2135	2165	30 SAND/COAL/SHALE
2165	2195	30 SHALE/SAND
2195	2222	27 SANDSTONE
2222	2225	3 COAL P-3
2225	2255	30 SHALE/SAND/COAL
2255	2285	30 SAND/SHALE
2285	2315	30 SAND/COAL/SHALE
2315	2345	30 SAND/SHALE
2345	2375	30 SAND/SHALE/COAL
2375	2405	30 SAND/COAL/SHALE
2405	2435	30 SAND/SHALE/COAL
2435	2465	30 SAND/COAL/SHALE
2465	2495	30 SAND/SHALE
2495	2525	30 RED SHALE

2525' TOTAL DEPTH
39' OF 13 3/8" CASING
443.5' OF 9 5/8" CASING
2304.44' OF 4 1/2" CASING