

(To be filled in by  
Division of Mines)

COMMONWEALTH OF VIRGINIA  
DEPARTMENT OF LABOR AND INDUSTRY

(To be filled in by  
Division of Mines)

Lee  
County  
Jonesville  
District  
Barth  
Quadrangle  
LE-93  
File

DIVISION OF MINES

BIG STONE GAP, VIRGINIA

DEEPENED  
OIL AND GAS WELL COMPLETION REPORT  
ABANDONMENT

Well No. 1  
Permit No. 501  
County Code 105  
Well  
Classification Dev.

(This report and a copy of electrical log, if made, must  
be submitted to the Division of Mines within 30 days after  
abandonment or completion of well, as required by Section  
45-113, Code of Virginia, 1950.)

Company Eastern States Exploration Co  
Farm C B Wadell  
County Lee  
Well No. (Company) C B Wadell #1

Address 12621 Electronic Drive  
Springfield, Virginia 22151  
Acres \_\_\_\_\_  
District \_\_\_\_\_  
Elevation (ground surface) 1740.3 ft.

Location: (Give direction and distance in feet from two (2) map coordinates (Latitude and Longitude) shown  
on location plat or map previously filed with the Division of Mines or shown on quadrangle topo-  
graphic map of area.)

\_\_\_\_\_ feet \_\_\_\_\_ of \_\_\_\_\_ and  
\_\_\_\_\_ feet \_\_\_\_\_ of \_\_\_\_\_

Surface of tract is owned in fee simple by C B Wadell  
Address Jonesville, Virginia 24263  
Mineral rights are owned by same  
Address same

Location made by Eastern States Exploration by Byron Zion  
Drilling commenced 8/29/82 Drilling contractor U.S. O.I. of Virginia  
Drilling completed 10/3/82 Address 5509 Big Tyler Rd, Charleston, W.V.

Well completed as  gas well on 10/30/82  
 oil

Well abandoned at n/a feet on n/a: Reason \_\_\_\_\_  
Well plugged on \_\_\_\_\_, 19\_\_\_\_ Affidavit filed \_\_\_\_\_, 19\_\_\_\_  
Total depth 2850' feet. Steel line measurement \_\_\_\_\_ feet.  
Commenced producing on October 30, 1982

Oil Well  
Initial production, (8) eight Barrels per day.  
Stimulation Record acid break down with 500 gallons of  
28% HCL - MOD-202 acid, treated with clay-sta, displac  
with 10 BBL of treated fresh water

Breakdown Pressure 3450 psi; Average Injection Pressure 1900 - 2100 psi;  
Average Injection Rate 10 - 12 BPM; Instant Shut-in Pressure 900 psi;  
5 Min. Shut-in Pressure 700 psi;

Final Production \_\_\_\_\_ Barrels per day.

Gravity and grade of oil \_\_\_\_\_  
Oil pays at (1) 1029 feet to 1039 feet. Oil shows at (1) \_\_\_\_\_ feet to \_\_\_\_\_ feet.  
(2) \_\_\_\_\_ feet to \_\_\_\_\_ feet. (2) \_\_\_\_\_ feet to \_\_\_\_\_ feet.  
(3) \_\_\_\_\_ feet to \_\_\_\_\_ feet. (3) \_\_\_\_\_ feet to \_\_\_\_\_ feet.  
(4) \_\_\_\_\_ feet to \_\_\_\_\_ feet. (4) \_\_\_\_\_ feet to \_\_\_\_\_ feet.  
Main production at 1029 feet to 1039 feet. (5) \_\_\_\_\_ feet to \_\_\_\_\_ feet.



Breakdown Pressure \_\_\_\_\_ psi; Average Injection Pressure \_\_\_\_\_ psi;  
 Average Injection Rate \_\_\_\_\_ BPM; Instant Shut-in Pressure \_\_\_\_\_ psi;  
 Min. Shut-in Pressure \_\_\_\_\_ psi.

Final Openflow \_\_\_\_\_ Mcf.; Rock Pressure \_\_\_\_\_ lbs. \_\_\_\_\_ h;  
 Gas pays at (1) \_\_\_\_\_ feet to \_\_\_\_\_ feet. Gas shows at (1) \_\_\_\_\_ feet to \_\_\_\_\_ feet;  
 (2) \_\_\_\_\_ feet to \_\_\_\_\_ feet. (2) \_\_\_\_\_ feet to \_\_\_\_\_ feet;  
 (3) \_\_\_\_\_ feet to \_\_\_\_\_ feet. (3) \_\_\_\_\_ feet to \_\_\_\_\_ feet;  
 (4) \_\_\_\_\_ feet to \_\_\_\_\_ feet. (4) \_\_\_\_\_ feet to \_\_\_\_\_ feet;  
 Main production \_\_\_\_\_ feet to \_\_\_\_\_ feet. (5) \_\_\_\_\_ feet to \_\_\_\_\_ feet;

Fresh water at (1) 71 feet, 2" stream GPM; (2) \_\_\_\_\_ feet, \_\_\_\_\_ GPM; (3) \_\_\_\_\_ feet, \_\_\_\_\_ GPM;  
 Salt water at (1) none feet; (2) \_\_\_\_\_ feet; (3) \_\_\_\_\_ feet; (4) \_\_\_\_\_ feet;  
 Coal: from none feet \_\_\_\_\_ inches to \_\_\_\_\_ feet \_\_\_\_\_ inches; from \_\_\_\_\_ feet \_\_\_\_\_ inches to \_\_\_\_\_ feet \_\_\_\_\_ inches; from \_\_\_\_\_ feet \_\_\_\_\_ inches, to \_\_\_\_\_ feet \_\_\_\_\_ inches.

CASING AND TUBING				PACKERS OR BRIDGE PLUGS		
SIZE (inch)	USED IN DRILLING (feet)	LEFT IN WELL (feet)	PERFORATED (feet) to (feet)	KIND	SIZE	SET AT
9 3/8"	67	67		Baker	6 1/4"	122.5'
7"	688	688				
4 1/2"		1210	1029 - 1039	3	sks cal seal on top of plug	
2 3/8"		1174	1165 - 1174			
				LINERS		
SIZE (inch)	USED IN DRILLING (ft.)	LEFT IN WELL (ft.)	PERFORATE (ft. to ft.)			

Casing Cemented: 7" inch. from 688 feet to surface Date 9/15/32  
 4 1/2" inch. from 1210 feet to 650 Date 10/26/32  
 \_\_\_\_\_ inch. from \_\_\_\_\_ feet to \_\_\_\_\_ Date \_\_\_\_\_

Remarks: (Shut down, depths, dates; fishing jobs, depths, dates; casing; other notes)  
 \_\_\_\_\_  
 \_\_\_\_\_  
 \_\_\_\_\_

Samples or cuttings will be available for examination by a member of the Virginia Geological Survey yes (Yes/No)  
 Will be furnished the Virginia Geological Survey upon request yes (Yes/No), if sacks for same are furnished by the Survey yes (Yes/No)  
 Electrical log made  or not made  (check which.)  
 Copy furnished herewith  or will be submitted on or by \_\_\_\_\_, 19\_\_\_\_  
 Depths 0 - 70  
 \_\_\_\_\_  
 \_\_\_\_\_

OIL AND GAS WELL  
SUMMARY REPORT

API No. 45-105-20501-00-03 VDMR Well Rep. No. \_\_\_\_\_  
DMQ File No. LE-93

Operator EASTERN STATES EXPLORATION COMPANY

Farm C. B. WADDELL

Co. Well No. C. B. WADDELL #1

County LEE Quadrangle BEN HUR - 7 1/2'  
Location (UTM) N4,067,060; E316,590 UTM Zone 17  
(Lat. and Long.) \_\_\_\_\_

Field \_\_\_\_\_ Province VALLEY AND RIDGE

Elev. (specify) 1740.3'GR. TD 2850 Form. at TD TRENTON  
Age ORDOVICIAN

Date compl. or abandoned OCTOBER 30, 1982

Result OIL WELL

Gas Shows \_\_\_\_\_

Gas Pays \_\_\_\_\_

Main Production 1029' TO 1039' Prod. Form. \_\_\_\_\_  
Age \_\_\_\_\_

Treatment: ACID BREAKDOWN WITH 500 GALLONS OF 28% HCL

Initial Production \_\_\_\_\_  
OIL PAYS - 1029' TO 1039'

Oil shows \_\_\_\_\_

Water FW X at 71 at \_\_\_\_\_ at \_\_\_\_\_  
SW \_\_\_\_\_ at \_\_\_\_\_ at \_\_\_\_\_ at \_\_\_\_\_

Coal \_\_\_\_\_

Plat X Plotted X Completion Report X

Drillers Log X Geologic Log \_\_\_\_\_

Samples \_\_\_\_\_ Interval Sheet \_\_\_\_\_

Sample Interval \_\_\_\_\_

Remarks \_\_\_\_\_

Geophysical Logs S.P. \_\_\_\_\_ Res \_\_\_\_\_ Gamma \_\_\_\_\_ Neutron \_\_\_\_\_  
Density \_\_\_\_\_ Sonic \_\_\_\_\_ Other \_\_\_\_\_



Stratigraphic Data Source

Formation	Top	Datum (Subsea)	Thickness
SOILS MATERIAL	0	+1740.3	67
COPPER RIDGE	67	+1673.3	619
CLINTON	686	+1054.3	265
CLINCH	951	+ 789.3	296
SEQUATCHIE	1247	+ 493.3	402
REEDSVILLE	1649	+ 91.3	442
TRENTON	2091	- 350.7	759

Remarks

References

Released to Open File: Completion JANUARY 28, 1983  
Samples NO

(Note: UTM measurements in meters, all others in feet)



DM Form 7

(To be filled in by  
Division of Mines)

COMMONWEALTH OF VIRGINIA  
DEPARTMENT OF LABOR AND INDUSTRY

(To be filled in by  
Division of Mines)

Lee  
County  
Jonesville  
District  
Bentley  
Quadrangle  
LE-93  
File

DIVISION OF MINES  
BIG STONE GAP, VIRGINIA

DEEPENED  
OIL AND GAS WELL COMPLETION REPORT  
ABANDONMENT

Well No. 1  
Permit No. 501  
County Code 105  
Well  
Classification Dev.

(This report and a copy of electrical log, if made, must  
be submitted to the Division of Mines within 30 days after  
abandonment or completion of well, as required by Section  
45-113, Code of Virginia, 1950.)

Company Eastern States Exploration Co  
Farm C B Wadell  
County Lee  
Well No. (Company) C B Wadell #1

Address 10621 Electronic Drive  
Springfield, Virginia 22151  
Acres \_\_\_\_\_  
District \_\_\_\_\_  
Elevation (ground surface) 1740.3 ft.

Location: (Give direction and distance in feet from two (2) map coordinates (Latitude and Longitude) shown  
on location plat or map previously filed with the Division of Mines or shown on quadrangle topo-  
graphic map of area.)

\_\_\_\_\_ feet \_\_\_\_\_ of \_\_\_\_\_ and  
\_\_\_\_\_ feet \_\_\_\_\_ of \_\_\_\_\_

Surface of tract is owned in fee simple by C B Wadell  
Address Jonesville, Virginia 24263  
Mineral rights are owned by same  
Address same  
Location made by Eastern States Exploration by Byron Zion  
Drilling commenced 8/29/82 Drilling contractor U.S. Oil of Virginia  
Drilling completed 10/3/82 Address 5509 Big Tyler Rd, Charleston, WV

Well completed as gas well on 10/30/82

Well abandoned at n/a feet on n/a: Reason \_\_\_\_\_  
Well plugged on \_\_\_\_\_, 19\_\_\_\_ Affidavit filed \_\_\_\_\_, 19\_\_\_\_  
Total depth 2850' feet. Steel line measurement \_\_\_\_\_ feet.  
Commenced producing on October 30, 1982

Oil Well  
Initial production, (8) eight Barrels per day.  
Stimulation Record acid breakdown with 500 gallons of  
28% HCL - med-202 acid, treated with clay-sta, displac  
with 10 BBL of treated fresh water

Breakdown Pressure 3450 psi; Average Injection Pressure 1900 - 2100 psi;  
Average Injection Rate 10 - 12 BPM; Instant Shut-in Pressure 900 psi;  
5 Min. Shut-in Pressure 700 psi;

Final Production \_\_\_\_\_ Barrels per day.

Gravity and grade of oil \_\_\_\_\_  
Oil pays at (1) 1029 feet to 1039 feet. Oil shows at (1) \_\_\_\_\_ feet to \_\_\_\_\_ feet.  
(2) \_\_\_\_\_ feet to \_\_\_\_\_ feet. (2) \_\_\_\_\_ feet to \_\_\_\_\_ feet.  
(3) \_\_\_\_\_ feet to \_\_\_\_\_ feet. (3) \_\_\_\_\_ feet to \_\_\_\_\_ feet.  
(4) \_\_\_\_\_ feet to \_\_\_\_\_ feet. (4) \_\_\_\_\_ feet to \_\_\_\_\_ feet.  
Main production at 1029 feet to 1039 feet. (5) \_\_\_\_\_ feet to \_\_\_\_\_ feet.

Gas Well Gaged \_\_\_\_\_ /10ths. Water in \_\_\_\_\_  
Initial open flow gas \_\_\_\_\_ (10ths. Mercury in \_\_\_\_\_)

Well No. \_\_\_\_\_ File No. \_\_\_\_\_ Permit No. \_\_\_\_\_

## LOG

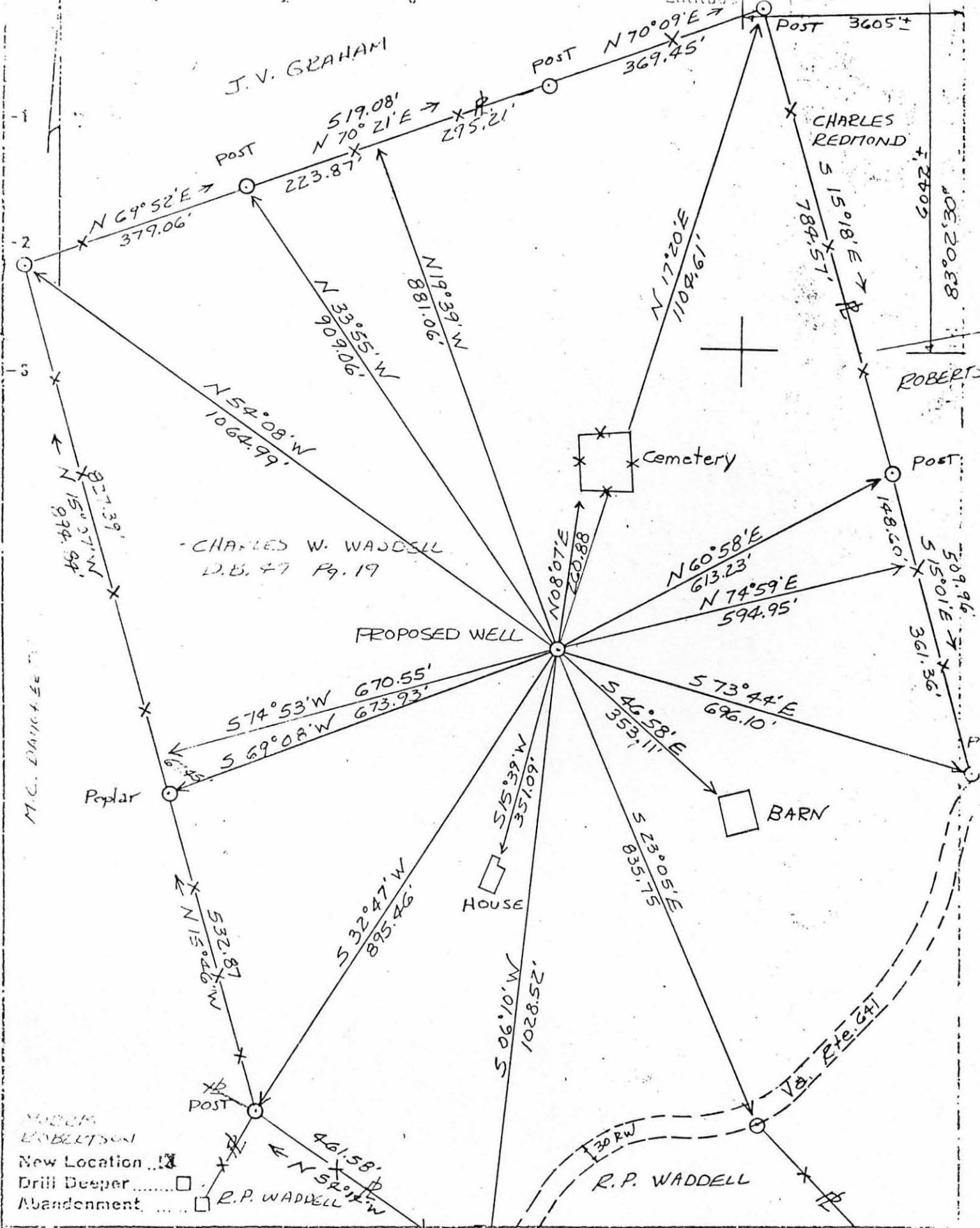
Furnished by \_\_\_\_\_ Date \_\_\_\_\_

Compiled by \_\_\_\_\_ Date \_\_\_\_\_

GEOLOGIC AGE	FORMATION	GENERAL LITHOLOGY	COLOR	TOP (feet)	BOTTOM (feet)	THICKNESS (feet)	REMARKS OIL, GAS WATER DEPTHS SHUT DOWN FISHING, ETC.
	Copper Ridge overthrust	Lime	Gray, tanish Gray	67	686	619	water - 67' 2" stream
	Clinton Shale	shale, sandy and limy shale	Dark gray, brownish gray	686	951	265	
	Clinch Sand	sand, shaley sand	white sand, with tan, brown shale breaks	951	1247	296	gas <del>and</del> odor 1028 oil to surface at 1040 approx 8 BBL per day
	Sequatchie Formation	limy sand with Red shales	Brownish Gray with Red shales	1247	1649	402	
	Reedville Shale	Gray shale	Gray shale with Brown lime breaks	1649	2091	442	
	Trenton Lime	Lime	Brownish Tan lime	2091	2850	759+	no oil or gas show in Trenton Lime







Company Eastern States Exploration, Inc.  
 Address 6621 Electronic Drive, Springfield VA22151  
 Farm CHARLES B. WADDELL  
 Tract 1 Acres 49.41 Lease No. \_\_\_\_\_  
 Well (Farm) No. 1 Serial No. \_\_\_\_\_  
 Elevation (Spirit Level) 1740.31  
 Quadrangle BEN HUR  
 County \_\_\_\_\_ District JONESVILLE  
 Engineer G.L. HATEFIELD  
 Engineer's Registration No. TN. # 1347

COMMONWEALTH OF VIRGINIA  
 DIVISION OF MINES  
 BIG STONE GAP, VA.  
**WELL LOCATION MAP**  
 FILE NO. \_\_\_\_\_

\* Denotes location of well on United States Topographic Maps, scale 1 to 25,000 feet, latitude and longitude lines being represented by border lines as shown.