

(To be filled in by  
Division of Mines)

COMMONWEALTH OF VIRGINIA  
DEPARTMENT OF LABOR AND INDUSTRY

(To be filled in by  
Division of Mines)

Lee  
County

DIVISION OF MINES

Well No. JAMES DEAN #1

Jonesville  
District

BIG STONE GAP, VIRGINIA

Permit No. 452

Ben Hur  
Quadrangle

DEEPENED  
OIL AND GAS WELL COMPLETION REPORT  
ABANDONMENT

County Code 105

LE-70  
File

(This report and a copy of electrical log, if made, must  
be submitted to the Division of Mines within 30 days after  
abandonment or completion of well, as required by Section  
45-113, Code of Virginia, 1950.)

Well  
Classification DEVELOPMENT

*OK*

Company Ben Hur Oil Company

Address 120 S. Court St.  
Abingdon, Virginia 24210

Farm James Dean

Acres 52 acres

County Lee

District Jonesville

Well No. (Company) 1

Elevation (ground surface) 1831.5 ft.

Location: (Give direction and distance in feet from two (2) map coordinates (Latitude and Longitude) shown  
on location plat or map previously filed with the Division of Mines or shown on quadrangle topo-  
graphic map of area.)

14,616 feet South of 36° 45' 00" and

10,699 feet West of 83° 05' 00"

Surface of tract is owned in fee simple by James Dean

Address Jonesville, Virginia

Mineral rights are owned by Surface owner

Address \_\_\_\_\_

Location made by Bartlett and Associates

Drilling commenced 1 December, 1981 Drilling contractor Interstate Drilling Co., Inc.

Drilling completed 9 December, 1981 Address Orchard Hill, Georgia

Well completed as gas well on 3/28/82  
oil

Well abandoned at \_\_\_\_\_ feet on \_\_\_\_\_: Reason \_\_\_\_\_

Well plugged on \_\_\_\_\_, 19\_\_\_\_ Affidavit filed \_\_\_\_\_, 19\_\_\_\_

Total depth 2550 feet. Steel line measurement 2538 feet.

Commenced producing on 28 March, 1982

Oil Well  
Initial production, 65 Barrels per <sup>hour</sup> day.

Stimulation Record Acidized 4 zones:	2449-2532'	46 holes	500 gals.	15% HCL
	2343-2434'	37 holes	500 gals.	28% HCL
	2299-2322'	18 holes	500 gals.	28% HCL
	2216-2287'	25 holes	1000 gals.	28% HCL

*TRanter*

Breakdown Pressure 300 psi; Average Injection Pressure 700 psi;

Average Injection Rate 5 BPM; Instant Shut-in Pressure 600 psi;

5 Min. Shut-in Pressure 100 psi;

Final Production \_\_\_\_\_ Barrels per day.

Gravity and grade of oil \_\_\_\_\_

Oil pays at (1)	<u>2230</u>	feet to	<u>2440</u>	feet.	Oil shows at (1)	_____	feet to	_____	feet.
(2)	_____	feet to	_____	feet.	(2)	_____	feet to	_____	feet.
(3)	_____	feet to	_____	feet.	(3)	_____	feet to	_____	feet.
(4)	_____	feet to	_____	feet.	(4)	_____	feet to	_____	feet.

OIL AND GAS WELL  
SUMMARY REPORT

API No. 45-105-20452-00-03 VDMR Well  
Rep. No. \_\_\_\_\_  
DMQ File No. LE-70

Operator BEN HUR OIL COMPANY  
Farm JAMES DEAN  
Co. Well No. 1

County LEE Quadrangle BEN HUR-7½'  
Location (UTM) N4,064,490; E310,650 UTM Zone 17  
(Lat. and Long.) \_\_\_\_\_

Field BEN HUR Province VALLEY AND RIDGE  
Elev. (specify) 1831.5' GR. TD 2550' Form. at TD TRENTON  
INITIAL FLOW - \_\_\_\_\_ Age ORDOVICIAN

Date compl. or abandoned MARCH 28, 1982  
Result OIL WELL  
Gas Shows 2020'; 2190'  
Gas Pays \_\_\_\_\_

Main Production 2216' TO 2287' Prod. Form. TRENTON  
Age ORDOVICIAN

Treatment: ACIDIZED 4 ZONES: 2449' TO 2532'; 2343' TO 2434'; 2299' TO 2322';  
2216' TO 2287'

Initial Production 65 BARRELS PER HOUR  
FINAL FLOW - \_\_\_\_\_

Oil shows OIL PAYS - 2230' TO 2440'  
Water FW X at 875' at \_\_\_\_\_ at \_\_\_\_\_  
SW \_\_\_\_\_ at \_\_\_\_\_ at \_\_\_\_\_ at \_\_\_\_\_

Coal \_\_\_\_\_

Plat \_\_\_\_\_ Plotted \_\_\_\_\_ Completion Report X  
Drillers Log X Geologic Log \_\_\_\_\_  
Samples \_\_\_\_\_ Interval Sheet \_\_\_\_\_  
Sample Interval \_\_\_\_\_  
Remarks \_\_\_\_\_

Geophysical Logs S.P. \_\_\_\_\_ Res \_\_\_\_\_ Gamma \_\_\_\_\_ Neutron \_\_\_\_\_  
Density \_\_\_\_\_ Sonic \_\_\_\_\_ Other \_\_\_\_\_

VIRGINIA DIVISION OF MINERAL RESOURCES  
 Box 3667, Charlottesville, VA 22903

INTERVAL SHEET

Page 1 of 1

Well Repository No.: W- 7311

Date rec'd: Date Processed: 8-19-93

Sample Interval: from 20 to: 900

PROPERTY: James Dean #1

Number of samples: 84

COMPANY: Ben Hur Oil Co.

Total Depth: 2550

COUNTY: Lee (Ben Hur) LE-070

Oil or Gas: Water: Exploratory:

From-To	From-To	From-To	From-To	From-To
-	50-60	70-10	-	-
-	60-70	10-20	-	-
20-30	70-80	20-30	-	-
30-40	80-90	30-40	-	-
40-50	90-400	40-50	-	-
50-60	400-10	50-60	-	-
60-70	10-20	60-70	-	-
70-80	20-30	70-80	-	-
80-90	30-40	80-90	-	-
90-100	40-50	90-800	-	-
100-20	50-60	800-10	-	-
-	60-70	10-20	-	-
20-40	70-80	20-30	-	-
-	80-90	30-40	-	-
40-50	90-500	40-50	-	-
50-60	-	50-60	-	-
60-70	50-25	60-70	-	-
70-80	25-30	70-80	-	-
80-90	30-40	80-90	-	-
90-200	40-50	90-900	-	-
200-10	50-60	-	-	-
10-20	60-70	-	-	-
20-30	70-80	-	-	-
30-40	80-90	-	-	-
40-50	90-600	-	-	-
50-60	600-10	-	-	-
60-70	10-20	-	-	-
70-80	20-30	-	-	-
80-90	30-40	-	-	-
90-300	40-50	-	-	-
-	50-60	-	-	-
310-20	60-70	-	-	-
20-30	70-80	-	-	-
30-40	80-90	-	-	-
40-50	90-700	-	-	-

(To be filled in by  
Division of Mines)COMMONWEALTH OF VIRGINIA  
DEPARTMENT OF LABOR AND INDUSTRY(To be filled in by  
Division of Mines)

Lee

County

Jonesville

District

Ben Hur

Quadrangle

LE-70

File

## DIVISION OF MINES

BIG STONE GAP, VIRGINIA

DEEPENED  
OIL AND GAS WELL COMPLETION REPORT  
ABANDONMENT(This report and a copy of electrical log, if made, must  
be submitted to the Division of Mines within 30 days after  
abandonment or completion of well, as required by Section  
45-113, Code of Virginia, 1950.)Well No. JAMES DEAN #1Permit No. 452County Code 125Well  
Classification DEVELOPMENTCompany Ben Hur Oil CompanyAddress 120 S. Court St.  
Abingdon, Virginia 24210Farm James DeanAcres 52 acresCounty LeeDistrict JonesvilleWell No. (Company) 1Elevation (ground surface) 1831.5 ft.Location: (Give direction and distance in feet from two (2) map coordinates (Latitude and Longitude) shown  
on location plat or map previously filed with the Division of Mines or shown on quadrangle topo-  
graphic map of area.)14,616 feet South of 36° 45' 00" and10,699 feet West of 83° 05' 00"Surface of tract is owned in fee simple by James DeanAddress Jonesville, VirginiaMineral rights are owned by Surface owner

Address \_\_\_\_\_

Location made by Bartlett and AssociatesDrilling commenced 1 December, 1981Drilling contractor Interstate Drilling Co., Inc.Drilling completed 9 December, 1981Address Orchard Hill, GeorgiaWell completed as oil well on 3/28/82

Well abandoned at \_\_\_\_\_ feet on \_\_\_\_\_: Reason \_\_\_\_\_

Well plugged on \_\_\_\_\_, 19\_\_\_\_ Affidavit filed \_\_\_\_\_, 19\_\_\_\_

Total depth 2550 feet. Steel line measurement 2538 feet.Commenced producing on 28 March, 1982

## Oil Well

Initial production, 65 Barrels per hour day.

Stimulation Record Acidized 4 zones: 2449-2532' 46 holes 500 gals, 15% HCL

2343-2434' 37 holes 500 gals, 28% HCL

2299-2322' 18 holes 500 gals, 28% HCL

2216-2287' 25 holes 1000 gals, 28% HCL

Breakdown Pressure 300 psi; Average Injection Pressure 700 psi;Average Injection Rate 5 BPM; Instant Shut-in Pressure 600 psi;5 Min. Shut-in Pressure 100 psi;

Final Production \_\_\_\_\_ Barrels per day.

Gravity and grade of oil \_\_\_\_\_

Oil pays at (1) 2230 feet to 2440 feet. Oil shows at (1) \_\_\_\_\_ feet to \_\_\_\_\_ feet.

(2) \_\_\_\_\_ feet to \_\_\_\_\_ feet. (2) \_\_\_\_\_ feet to \_\_\_\_\_ feet.

(3) \_\_\_\_\_ feet to \_\_\_\_\_ feet. (3) \_\_\_\_\_ feet to \_\_\_\_\_ feet.

(4) \_\_\_\_\_ feet to \_\_\_\_\_ feet. (4) \_\_\_\_\_ feet to \_\_\_\_\_ feet.

Main production at 2216 feet to 2287 feet. (5) \_\_\_\_\_ feet to \_\_\_\_\_ feet.

## Gas Well

Initial open flow, gas:

Volume \_\_\_\_\_ Mcf.; Rock Pressure \_\_\_\_\_ lbs. \_\_\_\_\_ hrs.

Stimulation Record \_\_\_\_\_

# LOG

Furnished by Ben Hur Oil Date 2 April, 1982

Compiled by Bartlett and Associates Date 2 April, 1982

GEOLOGIC AGE	FORMATION	GENERAL LITHOLOGY	COLOR	TOP (feet)	BOTTOM (feet)	THICKNESS (feet)	REMARKS OIL, GAS WATER DEPTHS SHUT DOWN FISHING, ETC.
Cambrian	Copper Ridge	Dolostone	Gray	Surf.	290	290	
	PINE MOUNTAIN		FAULT @	290'			
Silurian	Cayuga	Sandy Limestone	Gray	290'	310	20	
Silurian	Clinton	Shale	Vari-Colored	310	635	325	
Silurian	Clinch-Poor Valley Ridge Mbr.	Sandstone	lt. brown	635	790	155	
Silurian	Clinch-Hagan Mbr.	Shale	dk. gray	790	885	95	wtr. @ 875'
Ordovician	Sequatchie	Mudstone-Limestone	dk. red	885	1275	390	
Ordovician	Reedsville	Shale-Limestone	gray	1275	1815	540	
Ordovician	Trenton	Limestone	gray	1815	T. D.	735	Gas @ 2030 Gas @ 2200 Oil @ 2230

Completion Record

Breakdown Pressure \_\_\_\_\_ psi; Average Injection Pressure \_\_\_\_\_ psi;  
 Average Injection Rate \_\_\_\_\_ BPM; Instant Shut-in Pressure \_\_\_\_\_ psi;  
 Min. Shut-in Pressure \_\_\_\_\_ psi.

Final Openflow \_\_\_\_\_ Mcf.; Rock Pressure \_\_\_\_\_ lbs. \_\_\_\_\_ hrs.  
 Gas pays at (1) \_\_\_\_\_ feet to \_\_\_\_\_ feet. Gas shows at (1) 2020 feet to \_\_\_\_\_ feet.  
 (2) \_\_\_\_\_ feet to \_\_\_\_\_ feet. (2) 2190 feet to \_\_\_\_\_ feet.  
 (3) \_\_\_\_\_ feet to \_\_\_\_\_ feet. (3) \_\_\_\_\_ feet to \_\_\_\_\_ feet.  
 (4) \_\_\_\_\_ feet to \_\_\_\_\_ feet. (4) \_\_\_\_\_ feet to \_\_\_\_\_ feet.  
 Main production \_\_\_\_\_ feet to \_\_\_\_\_ feet. (5) \_\_\_\_\_ feet to \_\_\_\_\_ feet.

Fresh water at (1) 875 feet, NA GPM; (2) \_\_\_\_\_ feet, \_\_\_\_\_ GPM; (3) \_\_\_\_\_ feet, \_\_\_\_\_ GPM.  
 Salt water at (1) \_\_\_\_\_ feet; (2) \_\_\_\_\_ feet; (3) \_\_\_\_\_ feet; (4) \_\_\_\_\_ feet.  
 Coal: from \_\_\_\_\_ feet \_\_\_\_\_ inches to \_\_\_\_\_ feet \_\_\_\_\_ inches; from \_\_\_\_\_ feet \_\_\_\_\_ inches to \_\_\_\_\_ feet \_\_\_\_\_ inches; from \_\_\_\_\_ feet \_\_\_\_\_ inches, to \_\_\_\_\_ feet \_\_\_\_\_ inches.

CASING AND TUBING				PACKERS OR BRIDGE PLUGS			
SIZE	USED IN DRILLING	LEFT IN WELL	PERFORATED	KIND	SIZE	SET AT	
(inch)	(feet)	(feet)	(feet) to (feet)				
9 5/8"		21					
7"		509					
4 1/2"		2550	2216-2287 2299-2322 2343-2434 2449-2532				
				LINERS			
				SIZE	USED IN DRILLING	LEFT IN WELL	PERFORATED
				(inch)	(ft.)	(ft.)	(ft. to ft.)

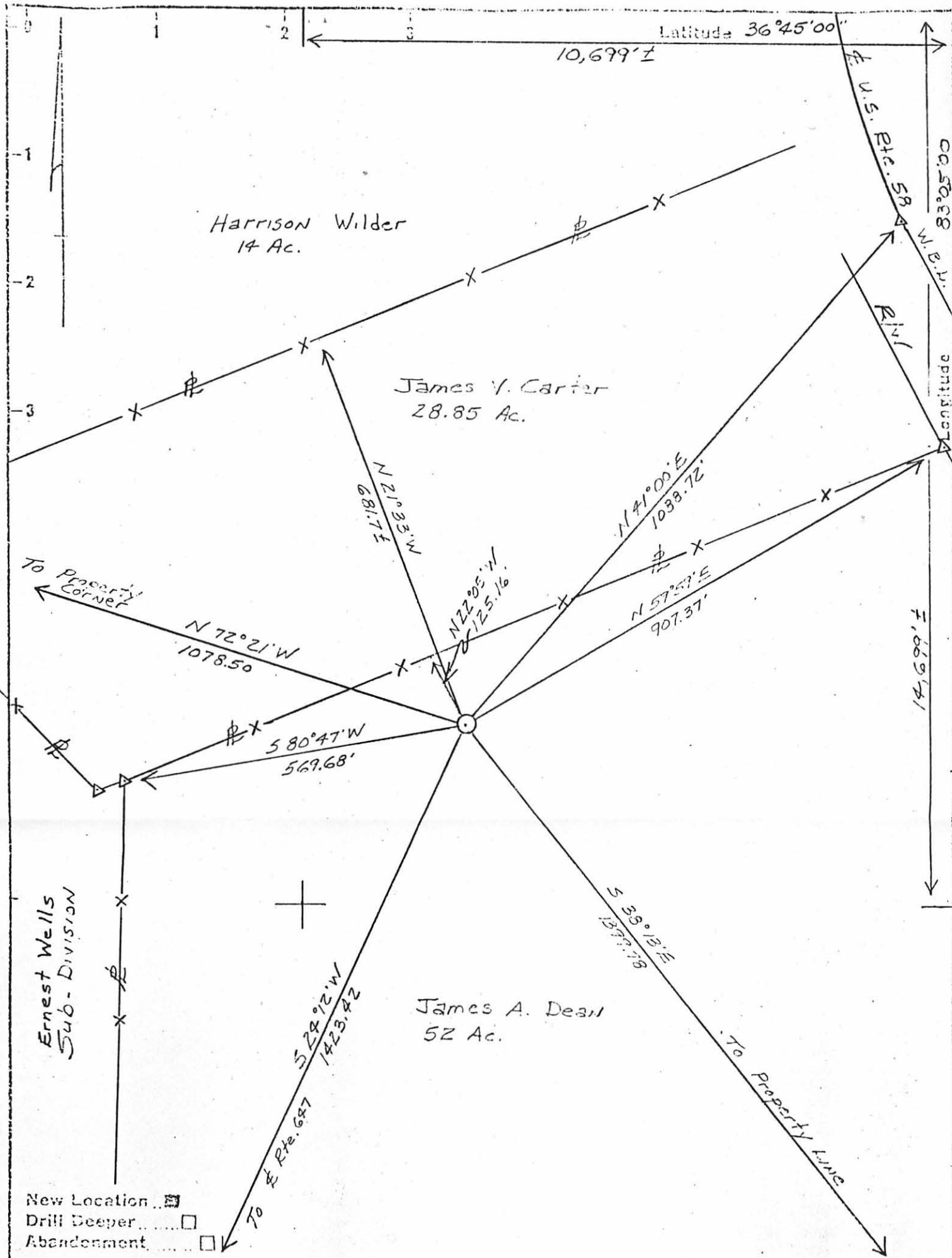
Casing Cemented: 9 5/8 inch. from 21 feet to surface Date 1 December, 1981  
 7" inch. from 509 feet to surface Date 5 December, 1981  
 4 1/2" inch. from T.D. feet to @ 1875' Date 11 December, 1981

Remarks: (Shut down, depths, dates; fishing jobs, depths, dates; caving; other notes)

Samples or cuttings will be available for examination by a member of the Virginia Geological Survey  (Yes)  (No)  
 Will be furnished the Virginia Geological Survey upon request  (Yes)  (No), if sacks for same are furnished by the Survey  (Yes)  (No)

Electrical log made  or not made \_\_\_\_\_ (check which.)  
 Copy furnished herewith \_\_\_\_\_ or will be submitted on or by \_\_\_\_\_, 19\_\_\_\_  
 Depths Cement bond 1500-2537 Fracture Identification 1500-2550  
 Compensated Density 100-2550  
 Dual Induction - SFL 516-2551

To operator requests that information given herein and log or logs be kept confidential for a period of ninety days after completion of the well covered by this report  (Yes)  (No)



Company Ben Hur Oil Co.  
 Address 120 South Court Street  
Abingdon, Va. 24201  
 Farm James A. Dean  
 Tract Dean Acres 52 Lease No. \_\_\_\_\_  
 Well (Farm) No Dean #1 Serial No. \_\_\_\_\_  
 Elevation (Spirit Level) 1831.5  
 Quadrangle Ben Hur  
 County Lee District Jonesville  
 Engineer G.L. Hatfield  
 Engineer's Registration No. L.S. TENN. 1349  
 File No. \_\_\_\_\_ Drawing No. 37-5C  
 Scale 1" = 200'

COMMONWEALTH OF VIRGINIA  
 DIVISION OF MINES  
 EIE STONE GAP, VA.

WELL LOCATION MAP  
 FILE NO. LE-70

\* Denotes location of well on United States Topographic Maps, scale 1 to 25,000 latitude and longitude lines being represented by border lines as shown.  
 - Denotes one inch square on border line of original tracing.