



Commonwealth of Virginia
Department of Mines, Minerals, and Energy
Division of Gas and Oil
P.O. Box 1416, Abingdon, VA 24212
Telephone: (276) 676-5423

Tracking Number:	<u>1607</u>
Company:	<u>CNX Gas Company LLC</u>
File Number:	<u>BU-3660</u>
Operations Name:	<u>CBM G56A W/PL</u>
Operation Type:	<u>Coalbed/Pipeline</u>
Drilling Report Type:	<u>Original</u>

DRILLING REPORT (DGO-GO-14)

1. Drilling Data

Date drilling commenced:	<u>3/30/2008</u>	Drilling Contractor:	<u>NOAH HORN</u>
Date drilling completed:	<u>4/3/2008</u>	Rig Type:	<input checked="" type="checkbox"/> Rotary <input type="checkbox"/> Cable
Driller's Total Depth (feet):	<u>2660.20</u>		
Log Total Depth (feet):	<u>2663.97</u>	Coal Seam at Total Depth:	<u>Pocahontas</u>

2. Final Location Plat (as required by 4 VAC25-150-360.C.)

Permitted State Plane X:	<u>10531549.0500</u>	Final Plat State Plane X:	<u>10531547.4200</u>
Permitted State Plane Y:	<u>3633963.2300</u>	Final Plat State Plane Y:	<u>3633962.8400</u>

Plat Previously Submitted Or...

List of Attached Items:

Description	FileName
PLAT	G56A PLAT.pdf

3. Geological Data

Fresh Water At:

Depth (in feet)	Rate	Unit of Measure
-----------------	------	-----------------

Salt Water At:

Depth (in feet)	Rate	Unit of Measure
-----------------	------	-----------------

Coal Seams:

List of Attached Items:

Description	FileName
EXHIBIT A	G56A EXHIBIT A.pdf

Gas and Oil Shows:

List of Attached Items:

Description	FileName
GAS SHOW	G56A Gas Show.xls

4. Electric Logs (As required by 4VAC25-150-280.A)

List all logs run: CALIPER GAMMA DENSITY TEMP DEVIATION

Did logs disclose vertical locations of a coal seam?

5. Survey Results (As required by 4VAC25-150-280.B.2)

List of Attached Items:

Description	FileName
DEVIATION	G56A DEVIATION.pdf

6. Casing and Tubing Program

List of Attached Items:

Description	FileName
CASING	G56A Casing.xls

7. Remarks

Use this space to note any conditions or occurrences, such as lost circulation, fishing jobs, junk left in hole, sidetracks, squeeze jobs, etc., not shown above. Include data and depth of condition/occurrence.

8. Drillers Log

Compiled By: NOAH HORN

List of Attached Items:

Description	FileName
DRILL DATA	G56A DRILL DATA.pdf

9. Comments

10. Signature

Permittee: CNX Gas Company LLC

Date: 11/26/2008

Signed By: Leslie Arrington

Title: Director Environmental Permitting

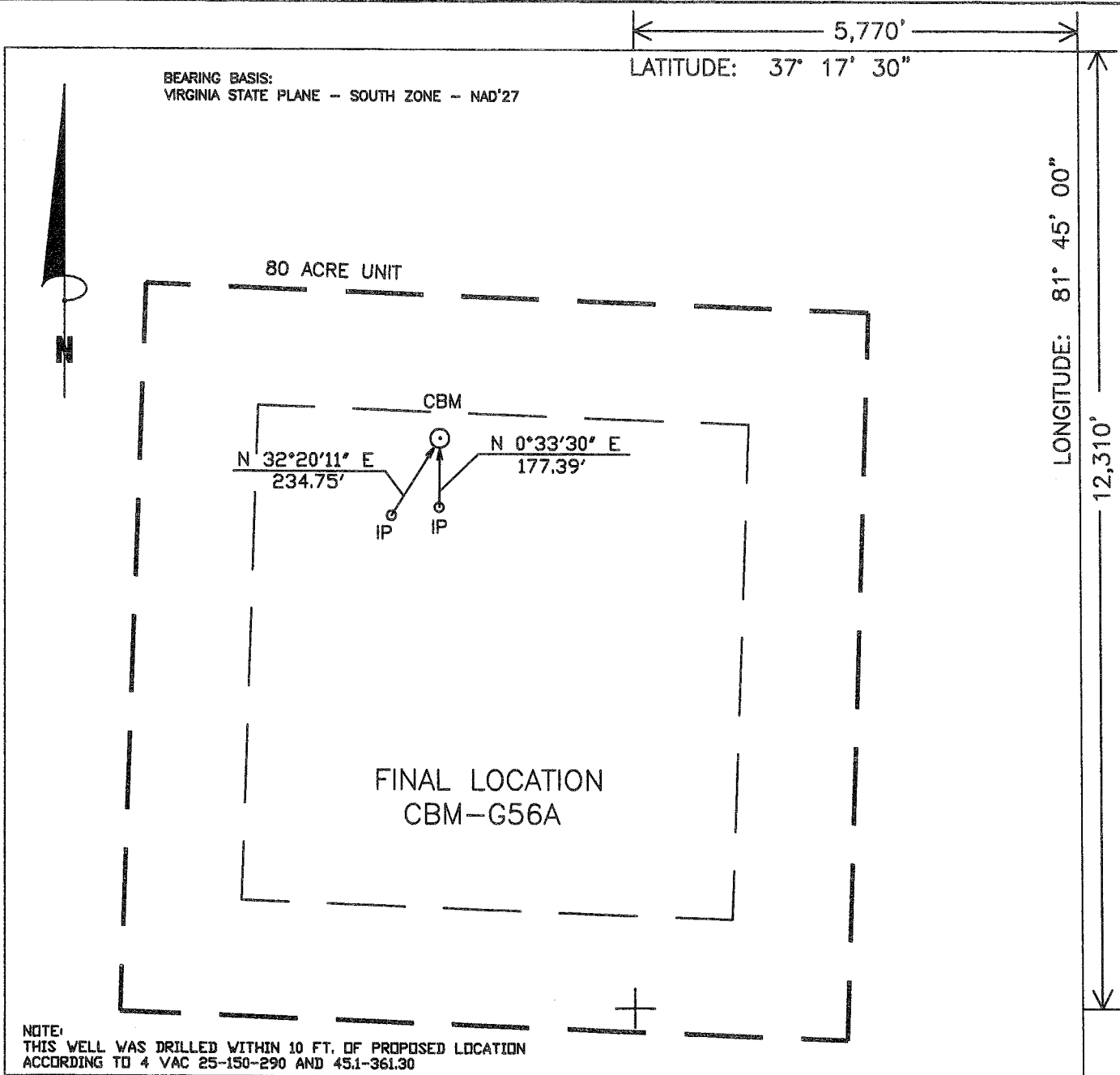
INTERNAL USE ONLY

Submit Date: 11/26/2008

Status: A

Date: 12/10/2008

Final PDF Date: 3/30/2009



WELL LOCATION PLAT

G56AFNL
CNX11/159-649/12

COMPANY CNX GAS COMPANY, LLC. WELL NAME OR NUMBER CBM-G56A

TRACT NUMBER PMC QUADRANGLE BRADSHAW

DISTRICT: GARDEN

WELL COORDINATES (VIRGINIA STATE PLANE): STATE PLANE: N 353,082.40 E 1,048,557.57

ELEVATION: 2866.03' METHOD USED TO DETERMINE ELEVATION: BY TRIG. LEVELS FROM CONSOL-INC BM'S

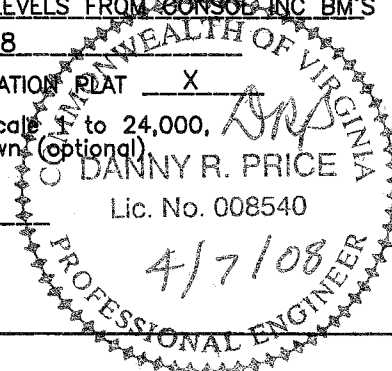
COUNTY BUCHANAN Scale: 1" = 400' Date 04-07-08

THIS PLAT IS A NEW PLAT ; AN UPDATED PLAT ; OR A FINAL LOCATION PLAT

⊕ Denotes the location of a well on United States Topographic Maps, scale 1" to 24,000, latitude and longitude lines being represented by border lines as shown (optional)

Danny R. Price

Licensed Professional Engineer or Licensed Land Surveyor (Affix Seal)



G56A.CMP
Exhibit A

Well Name: 08 CBM G56A
SURFACE ELEV: 2866.03 EASTING: 1048557.57 NORTHING: 353082.40

SEAM	DEPTH FROM (FT)	DEPTH TO (FT)	ELEVATION (TOSE)	THK. (FT)	REMARKS
COAL	61.60	62.10	2804.43	0.50	
	62.10	80.00	2803.93	17.90	
COAL	80.00	82.00	2786.03	2.00	
	82.00	112.00	2784.03	30.00	
COAL	112.00	115.30	2754.03	3.30	
	115.30	139.00	2750.73	23.70	
COAL	139.00	141.90	2727.03	2.90	
	141.90	206.00	2724.13	64.10	
COAL	206.00	207.10	2660.03	1.10	
	207.10	277.00	2658.93	69.90	
KN1	277.00	278.90	2589.03	1.90	
	278.90	310.20	2587.13	31.30	
KN2	310.20	311.70	2555.83	1.50	
	311.70	320.90	2554.33	9.20	
COAL	320.90	321.30	2545.13	0.40	
	321.30	410.90	2544.73	89.60	
AL1	410.90	411.90	2455.13	1.00	
	411.90	464.00	2454.13	52.10	
AL2	464.00	466.20	2402.03	2.20	
	466.20	497.00	2399.83	30.80	
RA1	497.00	497.20	2369.03	0.20	
	497.20	557.50	2368.83	60.30	
RA2	557.50	558.90	2308.53	1.40	
	558.90	681.80	2307.13	122.90	
JB1	681.80	683.10	2184.23	1.30	
	683.10	683.60	2182.93	0.50	
JB1	683.60	683.80	2182.43	0.20	
	683.80	717.80	2182.23	34.00	
COAL	717.80	717.90	2148.23	0.10	
	717.90	718.10	2148.13	0.20	
COAL	718.10	718.20	2147.93	0.10	
	718.20	725.50	2147.83	7.30	
JB3	725.50	726.60	2140.53	1.10	
	726.60	726.80	2139.43	0.20	
COAL	726.80	727.90	2139.23	1.10	
	727.90	768.90	2138.13	41.00	
T1	768.90	769.40	2097.13	0.50	
	769.40	769.70	2096.63	0.30	
T1	769.70	770.40	2096.33	0.70	
	770.40	770.90	2095.63	0.50	
COAL	770.90	771.10	2095.13	0.20	
	771.10	773.90	2094.93	2.80	
TI	773.90	774.70	2092.13	0.80	
	774.70	774.90	2091.33	0.20	
TI	774.90	775.90	2091.13	1.00	
	775.90	945.70	2090.13	169.80	
*US1	945.70	945.90	1920.33	0.20	
	945.90	947.00	1920.13	1.10	
*COAL	947.00	947.10	1919.03	0.10	
	947.10	1053.70	1918.93	106.60	
*COAL	1053.70	1053.90	1812.33	0.20	
	1053.90	1138.10	1812.13	84.20	
*GC2	1138.10	1138.90	1727.93	0.80	
	1138.90	1139.10	1727.13	0.20	
*GC2	1139.10	1139.70	1726.93	0.60	
	1139.70	1215.30	1726.33	75.60	

G56A.CMP

*SE2	1215.30	1216.30	1650.73	1.00
	1216.30	1278.80	1649.73	62.50
*LS1	1278.80	1279.90	1587.23	1.10
	1279.90	1288.50	1586.13	8.60
*LS2	1288.50	1288.60	1577.53	0.10
	1288.60	1314.40	1577.43	25.80
*LS3	1314.40	1315.00	1551.63	0.60
	1315.00	1346.40	1551.03	31.40
*UH1	1346.40	1348.30	1519.63	1.90
	1348.30	1398.40	1517.73	50.10
*UH3	1398.40	1398.90	1467.63	0.50
	1398.90	1399.00	1467.13	0.10
*UH3	1399.00	1399.80	1467.03	0.80
	1399.80	1452.90	1466.23	53.10
*MH1	1452.90	1454.50	1413.13	1.60
	1454.50	1523.00	1411.53	68.50
*MH2	1523.00	1523.60	1343.03	0.60
	1523.60	1701.80	1342.43	178.20
*P91	1701.80	1702.10	1164.23	0.30
	1702.10	1704.40	1163.93	2.30
*P92	1704.40	1705.10	1161.63	0.70
	1705.10	1722.80	1160.93	17.70
*COAL	1722.80	1723.40	1143.23	0.60
	1723.40	1724.90	1142.63	1.50
*COAL	1724.90	1725.10	1141.13	0.20
	1725.10	1728.70	1140.93	3.60
*COAL	1728.70	1728.90	1137.33	0.20
	1728.90	1767.70	1137.13	38.80
*P81	1767.70	1767.90	1098.33	0.20
	1767.90	1768.10	1098.13	0.20
*P81	1768.10	1768.30	1097.93	0.20
	1768.30	1769.10	1097.73	0.80
*COAL	1769.10	1769.60	1096.93	0.50
	1769.60	1821.40	1096.43	51.80
*P71	1821.40	1822.00	1044.63	0.60
	1822.00	1843.70	1044.03	21.70
*P72	1843.70	1844.20	1022.33	0.50
	1844.20	1878.80	1021.83	34.60
*COAL	1878.80	1879.10	987.23	0.30
	1879.10	1904.90	986.93	25.80
*COAL	1904.90	1905.00	961.13	0.10
	1905.00	2001.10	961.03	96.10
*P62	2001.10	2001.90	864.93	0.80
	2001.90	2034.90	864.13	33.00
*P51	2034.90	2036.10	831.13	1.20
	2036.10	2058.70	829.93	22.60
*P52	2058.70	2059.50	807.33	0.80
	2059.50	2143.60	806.53	84.10
*P41	2143.60	2144.50	722.43	0.90
	2144.50	2145.00	721.53	0.50
*P42	2145.00	2147.10	721.03	2.10
	2147.10	2168.70	718.93	21.60
*P31	2168.70	2168.90	697.33	0.20
	2168.90	2229.10	697.13	60.20
*P32	2229.10	2230.80	636.93	1.70
	2230.80	2231.00	635.23	0.20
*P33	2231.00	2231.50	635.03	0.50
	2231.50	2275.10	634.53	43.60
*P21	2275.10	2275.30	590.93	0.20
	2275.30	2350.40	590.73	75.10
*P01	2350.40	2350.70	515.63	0.30
	2350.70	2413.70	515.33	63.00
*COAL	2413.70	2413.90	452.33	0.20
	2413.90	2415.10	452.13	1.20
*SJ3	2415.10	2416.20	450.93	1.10
	2416.20	2663.97	449.83	247.77

G56A.CMP

COAL SEAMS TO BE STIMULATED WERE ADJUSTED DUE TO TOPOGRAPHY.
GAMMA-CALIPER LOG FROM 0 TO 630.00
GAMMA-DENSITY LOG FROM 630.00 TO TD.
NOTE: FOOTAGE NOT ADJUSTED FOR DEVIATION
FILE: H:\JIMHAZ~1\PROJECTS\GAS\G56A.CMP
DATE: 04/10/08

Well: G56A

Oil & Gas Show

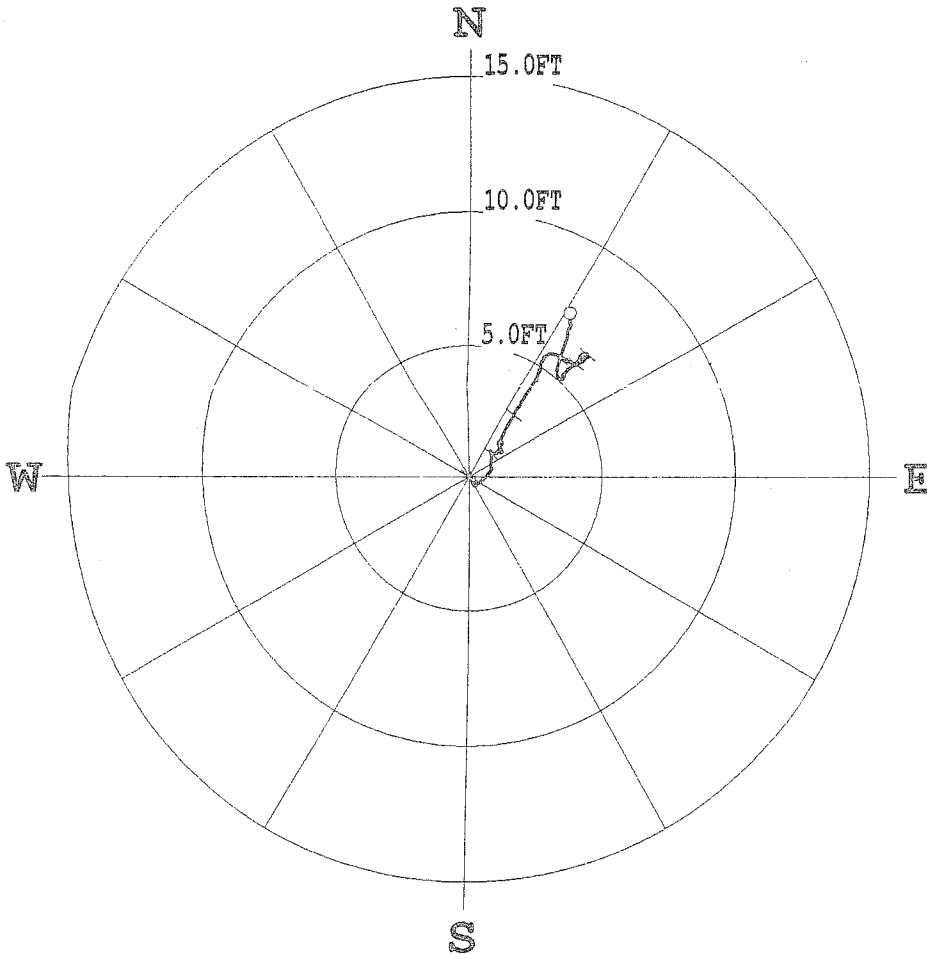
Formation	Top	Bottom	Thickness	IPF (MCFD/BOPD)	Pressure	Hours Tested
Lee/Norton	1215.3	1454.5	239.2			
Pocahontas	2034.9	2416.2	381.3			
Total IPF				NOT TAKEN		

PLAN VIEW COMPU-LOG DEVIATION

CLIENT: CONSOL ENERGY
 LOCATION:
 HOLE ID: 08-CNX-G-56A
 DATE OF LOG: 04/03/08
 PROBE: 9136CH 1279



SCALE: 5 FT/IN
 TRUE DEPTH: 2663.02 FT
 AZIMUTH: 31.5
 DISTANCE: 7.2 FT
 + = 500 FT INCR
 ○ = BOTTOM OF HOLE



***** COMPU-LOG - VERTICAL DEVIATION *****

CLIENT : CONSOL ENERGY	HOLE ID. : 08-CNX-G-56A
FIELD OFFICE : O'DRISCOLL	DATE OF LOG : 04/03/08
DATA FROM :	PROBE : 9136CH , 1279
MAG. DECL. : -7.100	DEPTH UNITS : FEET
LOG: 08-CNX-G-56A_04-03-08_13-01_9136CH_10_0.00_2663.10_DEVI.log	

BLE DEPTH	TRUE DEPTH	NORTH DEV.	EAST DEV.	DISTANCE	AZIMUTH	SANG	SANGE
0.50	0.50	0.00	0.00	0.0	0.0	0.0	0.0
10.00	10.00	0.01	-0.00	0.0	354.2	0.1	156.2
20.00	20.00	0.01	0.00	0.0	17.4	0.1	10.7
30.00	30.00	0.01	0.02	0.0	62.9	0.3	73.4
40.00	40.00	0.02	0.05	0.1	66.0	0.1	48.4
50.00	50.00	0.04	0.05	0.1	49.5	0.1	343.8
60.00	60.00	0.06	0.04	0.1	32.9	0.1	30.6
70.00	70.00	0.07	0.05	0.1	35.8	0.1	26.5
80.00	80.00	0.09	0.05	0.1	29.6	0.1	24.2
90.00	90.00	0.11	0.05	0.1	26.2	0.1	344.2
100.00	100.00	0.12	0.03	0.1	16.7	0.1	227.4
110.00	110.00	0.08	0.03	0.1	20.1	0.3	163.0
120.00	120.00	0.02	0.06	0.1	68.4	0.5	134.7
130.00	130.00	-0.02	0.11	0.1	102.7	0.4	129.0
140.00	140.00	-0.05	0.16	0.2	105.8	0.3	101.7

FIELD OFFICE : O'DRISCOLL
 DATA FROM :
 MAG. DECL. : -7.100
 LOG: 08-CNK-G-56A_04-03-06_13-01_9136CH_10_0.00_2663.10_DEVI.log

DATE OF LOG : 04/03/08
 PROBE : 9136CH , 1279
 DEPTH UNITS : FEET

TABLE DEPTH	TRUE DEPTH	NORTH DEV.	EAST DEV.	DISTANCE	AZIMUTH	SANG	SANGB
0.50	0.50	0.00	0.00	0.0	0.0	0.0	0.0
10.00	10.00	0.01	-0.00	0.0	354.2	0.1	156.2
20.00	20.00	0.01	0.00	0.0	17.4	0.1	10.7
30.00	30.00	0.01	0.02	0.0	62.9	0.3	73.4
40.00	40.00	0.02	0.05	0.1	66.0	0.1	48.4
50.00	50.00	0.04	0.05	0.1	49.5	0.1	343.8
60.00	60.00	0.06	0.04	0.1	32.9	0.1	30.6
70.00	70.00	0.07	0.05	0.1	35.8	0.1	26.5
80.00	80.00	0.09	0.05	0.1	29.6	0.1	24.2
90.00	90.00	0.11	0.05	0.1	26.2	0.1	344.2
100.00	100.00	0.12	0.03	0.1	16.7	0.1	227.4
110.00	110.00	0.08	0.03	0.1	20.1	0.3	163.0
120.00	120.00	0.02	0.06	0.1	68.4	0.5	134.7
130.00	130.00	-0.02	0.11	0.1	102.7	0.4	129.0
140.00	140.00	-0.05	0.16	0.2	105.8	0.3	101.7
150.00	150.00	-0.04	0.21	0.2	100.9	0.2	60.0
160.00	160.00	-0.01	0.21	0.2	92.4	0.2	318.0
170.00	170.00	-0.01	0.18	0.2	93.4	0.2	223.9
180.00	180.00	-0.05	0.17	0.2	105.5	0.2	184.7
190.00	190.00	-0.09	0.16	0.2	118.0	0.2	190.2
200.00	200.00	-0.11	0.13	0.2	130.8	0.2	229.8
210.00	210.00	-0.15	0.11	0.2	143.5	0.2	183.3
220.00	220.00	-0.19	0.12	0.2	148.8	0.3	167.9
230.00	230.00	-0.23	0.13	0.3	151.2	0.3	157.0
240.00	240.00	-0.27	0.15	0.3	151.9	0.2	152.7
250.00	250.00	-0.31	0.17	0.4	151.5	0.2	152.2
260.00	260.00	-0.33	0.20	0.4	148.8	0.2	120.9
270.00	270.00	-0.32	0.26	0.4	140.8	0.4	47.8
280.00	280.00	-0.27	0.33	0.4	129.5	0.3	65.4
290.00	290.00	-0.21	0.41	0.5	116.9	0.6	48.6
300.00	300.00	-0.14	0.49	0.5	106.4	0.5	56.9
310.00	310.00	-0.07	0.56	0.6	97.2	0.7	44.7
320.00	320.00	-0.00	0.64	0.6	90.0	0.3	53.9
330.00	329.99	0.09	0.71	0.7	83.2	0.8	32.2
340.00	339.99	0.19	0.80	0.8	76.5	0.9	37.8
350.00	349.99	0.31	0.87	0.9	70.3	0.6	4.7
360.00	359.99	0.40	0.83	0.9	64.4	0.5	12.3
370.00	369.99	0.48	0.84	1.0	60.0	0.5	10.5
380.00	379.99	0.57	0.84	1.0	56.0	0.6	354.8
390.00	389.99	0.68	0.86	1.1	51.6	0.8	8.2
400.00	399.99	0.79	0.87	1.2	47.9	0.5	9.5
410.00	409.99	0.87	0.87	1.2	44.9	0.5	347.0
420.00	419.99	0.94	0.86	1.3	42.5	0.2	282.6
430.00	429.99	0.96	0.83	1.3	41.0	0.2	272.9
440.00	439.99	0.94	0.81	1.2	40.6	0.1	219.0
450.00	449.99	0.92	0.81	1.2	41.4	0.2	158.4
460.00	459.99	0.90	0.82	1.2	42.5	0.1	188.3
470.00	469.99	0.89	0.83	1.2	43.1	0.1	172.9
480.00	479.99	0.86	0.83	1.2	44.1	0.2	173.9
490.00	489.99	0.85	0.84	1.2	44.9	0.2	82.5
500.00	499.99	0.84	0.86	1.2	45.9	0.2	125.6
510.00	509.99	0.84	0.90	1.2	47.1	0.2	67.3
520.00	519.99	0.85	0.94	1.3	47.9	0.2	79.8
530.00	529.99	0.87	0.99	1.3	48.7	0.2	89.0
540.00	539.99	0.88	1.03	1.4	49.7	0.2	70.6
550.00	549.99	0.89	1.07	1.4	50.1	0.2	23.6
560.00	559.99	0.93	1.09	1.4	49.6	0.3	34.1
570.00	569.99	0.96	1.12	1.5	49.4	0.2	57.3
580.00	579.99	0.96	1.15	1.5	50.1	0.2	127.6
590.00	589.99	0.94	1.18	1.5	51.5	0.1	126.1
600.00	599.99	0.92	1.20	1.5	52.5	0.2	123.7
610.00	609.99	0.91	1.23	1.5	53.3	0.2	99.6
620.00	619.99	0.91	1.25	1.5	54.1	0.1	81.2
630.00	629.99	0.93	1.26	1.6	53.6	0.2	22.8
640.00	639.99	0.95	1.26	1.6	53.0	0.2	261.4
650.00	649.99	0.97	1.25	1.6	52.1	0.2	348.9
660.00	659.99	1.00	1.23	1.6	50.9	0.2	320.4
670.00	669.99	1.03	1.21	1.6	49.5	0.3	10.4
680.00	679.99	1.08	1.20	1.6	48.1	0.2	340.4
690.00	689.99	1.10	1.17	1.6	46.8	0.2	298.1
700.00	699.99	1.13	1.14	1.6	45.3	0.2	339.2
710.00	709.99	1.17	1.13	1.6	44.0	0.2	0.7
720.00	719.99	1.20	1.12	1.6	43.0	0.2	332.8
730.00	729.99	1.23	1.13	1.7	42.5	0.2	33.9
740.00	739.99	1.26	1.14	1.7	42.0	0.2	7.8
750.00	749.99	1.29	1.15	1.7	41.9	0.2	56.6
760.00	759.99	1.30	1.19	1.8	42.4	0.3	76.3
770.00	769.99	1.30	1.23	1.8	43.3	0.2	110.7
780.00	779.99	1.28	1.25	1.8	44.4	0.2	157.7
790.00	789.99	1.24	1.26	1.8	45.3	0.2	178.8
800.00	799.99	1.22	1.24	1.7	45.5	0.2	289.0
810.00	809.98	1.24	1.24	1.8	45.0	0.2	66.3
820.00	819.98	1.24	1.28	1.8	45.9	0.2	176.2
830.00	829.98	1.22	1.25	1.7	45.7	0.2	287.0
840.00	839.98	1.22	1.21	1.7	44.8	0.1	207.7
850.00	849.98	1.23	1.18	1.7	43.9	0.2	321.2
860.00	859.98	1.25	1.16	1.7	42.8	0.3	254.1
870.00	869.98	1.27	1.14	1.7	41.9	0.3	101.6
880.00	879.98	1.27	1.13	1.7	41.7	0.4	211.7

809.00	809.98	1.24	1.24	1.5	45.9	0.2	176.2
820.00	819.98	1.24	1.28	1.8	45.9	0.2	287.0
830.00	829.98	1.22	1.25	1.7	45.7	0.1	207.7
840.00	839.98	1.22	1.21	1.7	44.8	0.2	321.2
850.00	849.98	1.23	1.18	1.7	43.9	0.3	254.1
860.00	859.98	1.25	1.16	1.7	42.8	0.3	10.6
870.00	869.98	1.27	1.14	1.7	41.9	0.4	211.7
880.00	879.98	1.27	1.13	1.7	41.7	0.0	200.5
890.00	889.98	1.26	1.14	1.7	42.2	0.2	88.4
900.00	899.98	1.26	1.16	1.7	42.7	0.2	356.0
910.00	909.98	1.30	1.18	1.8	42.3	0.2	42.2
920.00	919.98	1.36	1.21	1.8	41.6	0.5	27.7
930.00	929.98	1.43	1.24	1.9	40.9	0.7	26.4
940.00	939.98	1.53	1.29	2.0	40.2	0.7	12.8
950.00	949.98	1.63	1.34	2.1	39.5	0.9	29.8
960.00	959.98	1.75	1.40	2.2	38.7	0.8	33.1
970.00	969.98	1.88	1.47	2.4	38.1	1.1	34.0
980.00	979.98	2.02	1.55	2.5	37.6	1.1	41.5
990.00	989.98	2.17	1.64	2.7	37.1	0.8	26.7
1000.00	999.98	2.31	1.72	2.9	36.7	1.2	26.9
1010.00	1009.97	2.47	1.81	3.1	36.2	1.2	50.4
1020.00	1019.97	2.63	1.94	3.3	36.3	1.0	33.1
1030.00	1029.97	2.80	2.01	3.4	35.7	1.1	34.8
1040.00	1039.97	2.97	2.12	3.6	35.5	1.2	34.4
1050.00	1049.97	3.15	2.24	3.9	35.3	1.3	34.3
1060.00	1059.96	3.34	2.36	4.1	35.3	1.0	29.3
1070.00	1069.96	3.51	2.46	4.3	35.0	1.1	267.8
1080.00	1079.96	3.65	2.55	4.5	35.1	0.9	11.9
1090.00	1089.96	3.66	2.58	4.5	34.8	0.6	23.0
1100.00	1099.96	3.72	2.58	4.6	34.4	0.6	20.1
1110.00	1109.96	3.83	2.62	4.6	34.1	0.5	24.0
1120.00	1119.96	3.93	2.66	4.7	33.8	0.6	6.9
1130.00	1129.96	4.02	2.69	4.9	33.7	0.4	44.6
1140.00	1139.95	4.03	2.69	4.9	33.5	0.5	357.0
1150.00	1149.95	4.06	2.68	4.9	33.3	0.4	18.6
1160.00	1159.95	4.13	2.72	5.0	33.2	0.3	349.7
1170.00	1169.95	4.19	2.74	5.0	33.0	0.2	9.0
1180.00	1179.95	4.24	2.75	5.1	32.7	0.3	354.4
1190.00	1189.95	4.27	2.74	5.1	32.5	0.3	7.2
1200.00	1199.95	4.31	2.75	5.2	32.3	0.4	60.6
1210.00	1209.95	4.36	2.75	5.2	32.4	0.3	19.8
1220.00	1219.95	4.40	2.80	5.3	32.4	0.3	33.6
1230.00	1229.95	4.45	2.82	5.3	32.3	0.5	6.6
1240.00	1239.95	4.49	2.84	5.3	32.3	0.2	66.9
1250.00	1249.95	4.51	2.85	5.4	32.0	0.1	52.3
1260.00	1259.95	4.54	2.84	5.4	32.3	0.2	76.6
1270.00	1269.95	4.56	2.88	5.4	32.5	0.3	63.3
1280.00	1279.95	4.58	2.92	5.4	32.6	0.3	43.1
1290.00	1289.95	4.61	2.95	5.5	32.7	0.2	36.4
1300.00	1299.95	4.63	2.98	5.5	32.9	0.5	65.1
1310.00	1309.95	4.65	3.01	5.6	33.0	0.3	151.0
1320.00	1319.95	4.68	3.04	5.6	33.4	0.5	75.3
1330.00	1329.95	4.68	3.09	5.6	33.7	0.4	149.8
1340.00	1339.95	4.69	3.13	5.7	34.3	0.4	117.1
1350.00	1349.95	4.67	3.19	5.7	34.9	0.4	93.7
1360.00	1359.95	4.65	3.24	5.7	35.5	0.4	131.9
1370.00	1369.95	4.64	3.31	5.7	36.2	0.3	101.2
1380.00	1379.95	4.60	3.37	5.7	36.9	0.3	107.5
1390.00	1389.95	4.57	3.44	5.7	37.5	0.4	124.9
1400.00	1399.95	4.55	3.49	5.7	38.2	0.5	134.4
1410.00	1409.95	4.51	3.55	5.8	38.9	0.6	180.7
1420.00	1419.95	4.49	3.62	5.8	39.6	0.5	132.8
1430.00	1429.95	4.45	3.69	5.8	40.5	0.4	129.2
1440.00	1439.95	4.38	3.74	5.8	41.6	0.3	114.0
1450.00	1449.95	4.39	3.80	5.8	42.2	0.4	115.3
1460.00	1459.95	4.34	3.86	5.8	42.8	0.4	110.6
1470.00	1469.95	4.31	3.92	5.9	43.4	0.7	37.8
1480.00	1479.95	4.29	3.97	5.9	43.7	0.2	198.2
1490.00	1489.95	4.26	4.03	5.9	43.8	0.3	338.4
1500.00	1499.95	4.26	4.06	5.9	43.5	0.1	222.4
1510.00	1509.95	4.27	4.09	5.9	43.1	0.2	338.6
1520.00	1519.95	4.30	4.07	6.0	43.1	0.2	95.9
1530.00	1529.95	4.31	4.08	6.0	43.2	0.2	51.9
1540.00	1539.95	4.34	4.06	6.0	43.3	0.3	63.0
1550.00	1549.95	4.35	4.07	6.0	43.5	0.2	80.1
1560.00	1559.95	4.36	4.09	6.0	43.7	0.3	132.0
1570.00	1569.95	4.38	4.13	6.1	43.5	0.2	311.6
1580.00	1579.95	4.39	4.16	6.1	43.5	0.1	36.8
1590.00	1589.95	4.39	4.20	6.1	43.4	0.2	35.1
1600.00	1599.95	4.42	4.20	6.1	43.6	0.2	178.8
1610.00	1609.95	4.44	4.21	6.1	43.3	0.3	298.8
1620.00	1619.95	4.46	4.22	6.1	43.0	0.2	354.4
1630.00	1629.95	4.45	4.23	6.1	42.8	0.2	31.9
1640.00	1639.95	4.44	4.18	6.1	42.8	0.1	52.2
1650.00	1649.95	4.46	4.16	6.1	42.8	0.2	36.5
1660.00	1659.95	4.48	4.16	6.2	42.7	0.3	33.2
1670.00	1669.95	4.50	4.17	6.2	42.8	0.2	115.3
1680.00	1679.95	4.52	4.18	6.2	42.9	0.3	189.6
1690.00	1689.95	4.55	4.20	6.2	42.6	0.2	16.0
1700.00	1699.95	4.57	4.23	6.2	42.5	0.2	93.4
1710.00	1709.95	4.54	4.22	6.2	42.8	0.2	132.0
1720.00	1719.95	4.52	4.19	6.2	42.8	0.2	233.9
1730.00	1729.95	4.56	4.18	6.2	42.5		
1740.00	1739.95	4.58	4.21	6.2	42.8		
1750.00	1749.95	4.57	4.24	6.2	43.1		
1760.00	1759.95	4.54	4.24	6.2			

1730.00	1728.95	4.58	4.21	6.2	42.5	0.2	93.4
1740.00	1739.95	4.57	4.24	6.2	42.6	0.2	132.0
1750.00	1749.95	4.54	4.24	6.2	43.1	0.2	233.9
1760.00	1759.95	4.55	4.21	6.2	42.8	0.2	326.1
1770.00	1769.95	4.59	4.21	6.2	42.5	0.3	5.7
1780.00	1779.95	4.63	4.23	6.3	42.4	0.3	58.1
1790.00	1789.94	4.65	4.28	6.3	42.6	0.3	88.6
1800.00	1799.94	4.66	4.31	6.3	42.8	0.2	108.0
1810.00	1809.94	4.64	4.32	6.3	43.0	0.1	176.8
1820.00	1819.94	4.61	4.33	6.3	43.2	0.2	172.4
1830.00	1829.94	4.58	4.32	6.3	43.3	0.2	277.7
1840.00	1839.94	4.62	4.32	6.3	43.1	0.3	356.5
1850.00	1849.94	4.67	4.34	6.4	42.9	0.2	13.8
1860.00	1859.94	4.68	4.37	6.4	43.0	0.3	95.5
1870.00	1869.94	4.67	4.39	6.4	43.2	0.2	110.9
1880.00	1879.94	4.65	4.40	6.4	43.4	0.2	152.5
1890.00	1889.94	4.63	4.42	6.4	43.7	0.2	151.4
1900.00	1899.94	4.60	4.43	6.4	43.9	0.1	160.8
1910.00	1909.94	4.57	4.44	6.4	44.2	0.2	168.9
1920.00	1919.94	4.56	4.46	6.4	44.4	0.2	99.5
1930.00	1929.94	4.55	4.49	6.4	44.6	0.1	99.3
1940.00	1939.94	4.54	4.48	6.4	44.6	0.3	2.9
1950.00	1949.94	4.59	4.46	6.4	44.2	0.3	305.5
1960.00	1959.94	4.63	4.43	6.4	43.8	0.2	343.1
1970.00	1969.94	4.67	4.44	6.4	43.5	0.2	31.1
1980.00	1979.94	4.68	4.45	6.5	43.6	0.1	172.6
1990.00	1989.94	4.65	4.45	6.4	43.7	0.3	173.5
2000.00	1999.94	4.63	4.45	6.4	43.9	0.1	211.3
2010.00	2009.94	4.59	4.43	6.4	44.0	0.2	206.2
2020.00	2019.94	4.56	4.42	6.3	44.1	0.2	207.6
2030.00	2029.94	4.52	4.40	6.3	44.2	0.2	233.5
2040.00	2039.94	4.48	4.37	6.3	44.3	0.2	220.1
2050.00	2049.94	4.45	4.34	6.2	44.3	0.3	210.3
2060.00	2059.94	4.41	4.31	6.2	44.3	0.4	233.2
2070.00	2069.94	4.38	4.27	6.1	44.3	0.3	238.5
2080.00	2079.94	4.35	4.23	6.1	44.2	0.4	234.7
2090.00	2089.94	4.32	4.16	6.0	43.9	0.4	250.4
2100.00	2099.94	4.29	4.11	5.9	43.8	0.4	247.1
2110.00	2109.94	4.27	4.06	5.9	43.6	0.3	264.1
2120.00	2119.94	4.24	4.02	5.8	43.4	0.4	244.8
2130.00	2129.94	4.21	3.96	5.8	43.2	0.3	237.4
2140.00	2139.94	4.18	3.90	5.7	43.0	0.4	225.1
2150.00	2149.94	4.15	3.85	5.7	42.9	0.4	235.7
2160.00	2159.94	4.11	3.79	5.6	42.7	0.4	223.9
2170.00	2169.94	4.08	3.74	5.5	42.4	0.3	266.5
2180.00	2179.94	4.07	3.74	5.5	42.6	0.3	103.2
2190.00	2189.94	4.03	3.72	5.5	42.7	0.2	234.5
2200.00	2199.94	4.00	3.69	5.4	42.7	0.3	231.0
2210.00	2209.94	3.97	3.67	5.4	42.7	0.3	231.9
2220.00	2219.94	3.94	3.63	5.4	42.7	0.2	242.2
2230.00	2229.94	3.91	3.60	5.3	42.6	0.3	234.4
2240.00	2239.94	3.88	3.56	5.3	42.5	0.1	5.9
2250.00	2249.94	3.84	3.54	5.2	42.7	0.2	178.3
2260.00	2259.94	3.87	3.58	5.3	42.7	0.3	39.6
2270.00	2269.94	3.87	3.61	5.3	43.1	0.2	156.9
2280.00	2279.94	3.83	3.61	5.3	43.3	0.1	181.6
2290.00	2289.94	3.80	3.61	5.2	43.5	0.2	177.9
2300.00	2299.94	3.76	3.60	5.2	43.7	0.2	184.3
2310.00	2309.94	3.73	3.58	5.2	43.9	0.2	206.6
2320.00	2319.94	3.71	3.56	5.1	43.8	0.2	249.5
2330.00	2329.94	3.70	3.53	5.1	43.7	0.2	276.0
2340.00	2339.94	3.70	3.49	5.1	43.3	0.2	268.5
2350.00	2349.94	3.71	3.45	5.1	43.0	0.2	312.2
2360.00	2359.94	3.73	3.42	5.1	42.5	0.2	296.2
2370.00	2369.94	3.76	3.39	5.1	42.0	0.2	327.7
2380.00	2379.94	3.80	3.37	5.1	41.6	0.3	344.0
2390.00	2389.94	3.86	3.36	5.1	41.1	0.4	3.5
2400.00	2399.94	3.92	3.35	5.2	40.5	0.3	358.6
2410.00	2409.94	3.98	3.35	5.2	40.1	0.3	0.1
2420.00	2419.94	4.04	3.35	5.2	39.7	0.3	39.3
2430.00	2429.94	4.07	3.32	5.3	39.3	0.7	276.3
2440.00	2439.94	4.09	3.33	5.3	39.1	0.4	20.1
2450.00	2449.94	4.16	3.35	5.3	38.8	0.4	15.7
2460.00	2459.94	4.24	3.37	5.4	38.4	0.5	17.0
2470.00	2469.94	4.32	3.39	5.5	38.1	0.5	16.1
2480.00	2479.94	4.41	3.41	5.6	37.7	0.5	21.1
2490.00	2489.94	4.50	3.44	5.7	37.4	0.5	18.5
2500.00	2499.93	4.58	3.46	5.7	37.1	0.5	11.8
2510.00	2509.93	4.68	3.50	5.8	36.6	0.6	14.9
2520.00	2519.93	4.78	3.52	5.9	36.4	0.7	17.6
2530.00	2529.93	4.91	3.57	6.1	36.0	0.8	25.6
2540.00	2539.93	5.03	3.61	6.2	35.7	0.7	12.5
2550.00	2549.93	5.14	3.64	6.3	35.3	0.8	19.9
2560.00	2559.93	5.24	3.69	6.4	35.1	0.7	20.8
2570.00	2569.93	5.35	3.72	6.5	34.8	0.5	6.5
2580.00	2579.93	5.44	3.69	6.6	34.2	0.6	21.3
2590.00	2589.93	5.54	3.72	6.7	33.9	0.6	7.0
2600.00	2599.93	5.64	3.76	6.8	33.7	0.6	65.2
2610.00	2609.93	5.71	3.81	6.9	33.7	0.6	355.4
2620.00	2619.93	5.78	3.80	6.9	33.3	0.6	283.3
2630.00	2629.93	5.91	3.80	7.0	32.7	0.9	17.8
2640.00	2639.93	6.05	3.88	7.2	32.6	1.0	37.3
2650.00	2649.92	6.16	3.84	7.3	31.9	1.0	291.4
2660.00	2659.92	6.18	3.79	7.2	31.5	1.0	282.5

COMPANY CNX
 HOLE G-56A
 RIG #: 141
 LOCATION: BEARWALLOW, VA
 DATE STARTED: 3/30/2008
 DATE COMPLETED: 4/3/2008
 ELECTRIC LOGGED: YES
 GROUTED: YES

DEPTH FROM	THICKNESS TO	FT	STRATA DESCRIPTION, VOIDS ETC.
0	30		30 OVERBURDEN
30	60.6		30.6 SANDY SHALE
60.6	90.6		30 SANDY SHALE/COAL/SANDY SHALE
90.6	120.6		30 SANDY SHALE
120.6	150.6		30 SANDY SHALE/COAL/SANDY SHALE
150.6	180.6		30 SANDY SHALE
180.6	210.6		30 SANDY SHALE/COAL/SANDY SHALE
210.6	240.6		30 SANDY SHALE
240.6	270.6		30 SANDY SHALE
270.6	300.6		30 SANDY SHALE
300.6	330.6		30 SANDY SHALE/COAL/SANDY SHALE
330.6	360.6		30 SANDY SHALE
360.6	390.6		30 SANDY SHALE
390.6	420.6		30 SANDY SHALE/COAL/SANDY SHALE
420.6	450.6		30 SANDY SHALE
450.6	480.6		30 SANDY SHALE/COAL/SANDY SHALE
480.6	510.6		30 SANDY SHALE/COAL/SANDY SHALE
510.6	540.6		30 SANDY SHALE/COAL/SANDY SHALE
540.6	570.6		30 SAND/COAL/SANDY SHALE
570.6	600.6		30 SANDY SHALE/COAL/SANDY SHALE
600.6	630.6		30 SAND/SANDY SHALE
630.6	640.6		10 SANDY SHALE
640.6	645		4.4
645	673.2		28.2 SAND/SHALE
673.2	703.2		30 SAND/SHALE
703.2	733.2		30 SAND/SHALE
733.2	763.2		30 SAND/SHALE/COAL
763.2	793.2		30 SAND/SHALE/COAL
793.2	823.2		30 SAND/SHALE/COAL
823.2	853.2		30 SAND/SHALE
853.2	883.2		30 SAND/SHALE
883.2	913.2		30 SAND/SHALE
913.2	943.2		30 SAND/SHALE

943.2	973.2	30 SAND/SHALE/COAL
973.2	1003.2	30 SAND/SHALE
1003.2	1033.2	30 SAND/SHALE
1033.2	1063.2	30 SAND/SHALE
1063.2	1093.2	30 SAND/SHALE
1093.2	1123.2	30 SAND/SHALE
1123.2	1153.2	30 SAND/SHALE/COAL
1153.2	1183.2	30 SAND/SHALE/COAL
1183.2	1220.2	37 SANDY SHALE/SAND
1220.2	1250.2	30 SANDY SHALE/COAL/SAND
1250.2	1280.2	30 SAND/SANDY SHALE
1280.2	1310.2	30 SAND/COAL/SANDY SHALE
1310.2	1340.2	30 SAND/COAL/SANDY SHALE
1340.2	1370.2	30 SAND/COAL/SANDY SHALE
1370.2	1400.2	30 SAND/SANDY SHALE
1400.2	1430.2	30 SAND/COAL/SAND
1430.2	1460.2	30 SAND/SANDY SHALE
1460.2	1490.2	30 SAND/COAL/SANDY SHALE
1490.2	1520.2	30 SAND
1520.2	1550.2	30 SAND/COAL/SANDY SHALE
1550.2	1580.2	30 SAND/SANDY SHALE
1580.2	1610.2	30 SAND
1610.2	1640.2	30 SAND
1640.2	1670.2	30 SAND
1670.2	1700.2	30 SAND
1700.2	1730.2	30 SAND/SANDY SHALE/COAL
1730.2	1760.2	30 SAND/SANDY SHALE/COAL
1760.2	1790.2	30 SAND/SANDY SHALE
1790.2	1820.2	30 SAND/SHALE
1820.2	1850.2	30 SAND/SHALE/COAL
1850.2	1880.2	30 SAND/SHALE/COAL
1880.2	1910.2	30 SAND/SHALE
1910.2	1940.2	30 SAND/SHALE
1940.2	1970.2	30 SAND/SHALE
1970.2	2000.2	30 SAND
2000.2	2030.2	30 SAND/SHALE/COAL
2030.2	2060.2	30 SAND/SHALE/COAL
2060.2	2090.2	30 SAND/SHALE/COAL
2090.2	2120.2	30 SAND
2120.2	2150.2	30 SAND/SHALE
2150.2	2180.2	30 SAND/SHALE/COAL
2180.2	2210.2	30 SAND/SHALE
2210.2	2231.2	21 SAND/SHALE
2231.2	2235.2	4 P-3 SEAM
2235.2	2240.2	5 SAND
2240.2	2270.2	30 SAND/SHALE/COAL
2270.2	2300.2	30 SAND/SHALE
2300.2	2330.2	30 SAND/SHALE
2330.2	2360.2	30 SAND/SANDY SHALE/COAL
2360.2	2390.2	30 SAND
2390.2	2420.2	30 SAND/SANDY SHALE/COAL
2420.2	2450.2	30 SAND

2450.2	2480.2	30 SAND
2480.2	2510.2	30 SAND
2510.2	2540.2	30 SAND
2540.2	2570.2	30 SAND
2570.2	2600.2	30 SAND
2600.2	2630.2	30 SAND/SANDY SHALE
2630.2	2660.2	30 SANDY SHALE/SAND

2660.2' TOTAL DEPTH
30' OF 13 3/8" CASING
618.36' OF 7" CASING
2440.02' OF 4 1/2" CASING