



Commonwealth of Virginia
 Department of Mines, Minerals, and Energy
 Division of Gas and Oil
 P.O. Box 1416; Abingdon, VA 24212
 Telephone: (276) 676-5423

Tracking Number: 755
 Company: CNX Gas Company LLC
 File Number: BU-3463
 Operations Name: CBM F13 W/PL
 Operation Type: Coalbed/Pipeline
 Drilling Report Type: Original

DRILLING REPORT (DGO-GO-14)

1. Drilling Data

Date drilling commenced: 5/24/2007 Drilling Contractor: Noah Horn
 Date drilling completed: 5/30/2007 Rig Type: Rotary Cable Tool
 Driller's Total Depth (feet): 2,410
 Log Total Depth (feet): 2,411 Coal Seam At Total Depth Pocahontas

2. Final Location Plat (as required by 4 VAC25-150-360.C.)

Permitted State Plane X: 969,168 Final Plat State Plane X: 969,170
 Permitted State Plane Y: 356,464 Final Plat State Plane Y: 356,461

Plat Previously Submitted Or...

List of Attached Items:

Description	FileName
Plat	F13 Plat.pdf

3. Geological Data

Fresh Water At:

Depth (in feet)	Rate	Unit of Measure

Salt Water At:

Depth (in feet)	Rate	Unit of Measure

Coal Seams

List of Attached Items:

Description	FileName
Exhibit A	F13 Exhibit A.pdf

Gas and Oil Shows

List of Attached Items:

Description	FileName
Gas Show	F13 Gas Show.xls

4. Electric Logs (As required by 4VAC25-150-280.A.)

List all logs run: Caliper, Gamma, Density, Temp, Deviation

Did logs disclose vertical locations of a coal seam? Yes No

5. Survey Results (As required by 4VAC25-150-280.B.2)

List of Attached Items:

Description	FileName
Deviation	F13 Deviation.pdf

6. Casing and Tubing Program

List of Attached Items:

Description	FileName
Casing	F13 Casing.xls

7. Remarks

Use this space to note any conditions or occurrences, such as lost circulation, fishing jobs, junk left in hole, sidetracks, squeeze jobs, etc., not shown above. Include data and depth of condition/occurrence.

7" Casing cemented on the backside to surface; Void @ 626' - 630'

8. Drillers Log

Compiled By: Noah Horn

List of Attached Items:

Description	FileName
Drill Data	F13 Drill Data.pdf

9. Comments

10. Signature

Permitee: CNX Gas Company LLC Date: 10/12/2007 (Company)

Signed By: Leslie K. Arrington Title: Manager (Signature)

INTERNAL USE ONLY

Submit Date: 10/12/2007

Status: Inspr Approved

Date: 10/15/2007

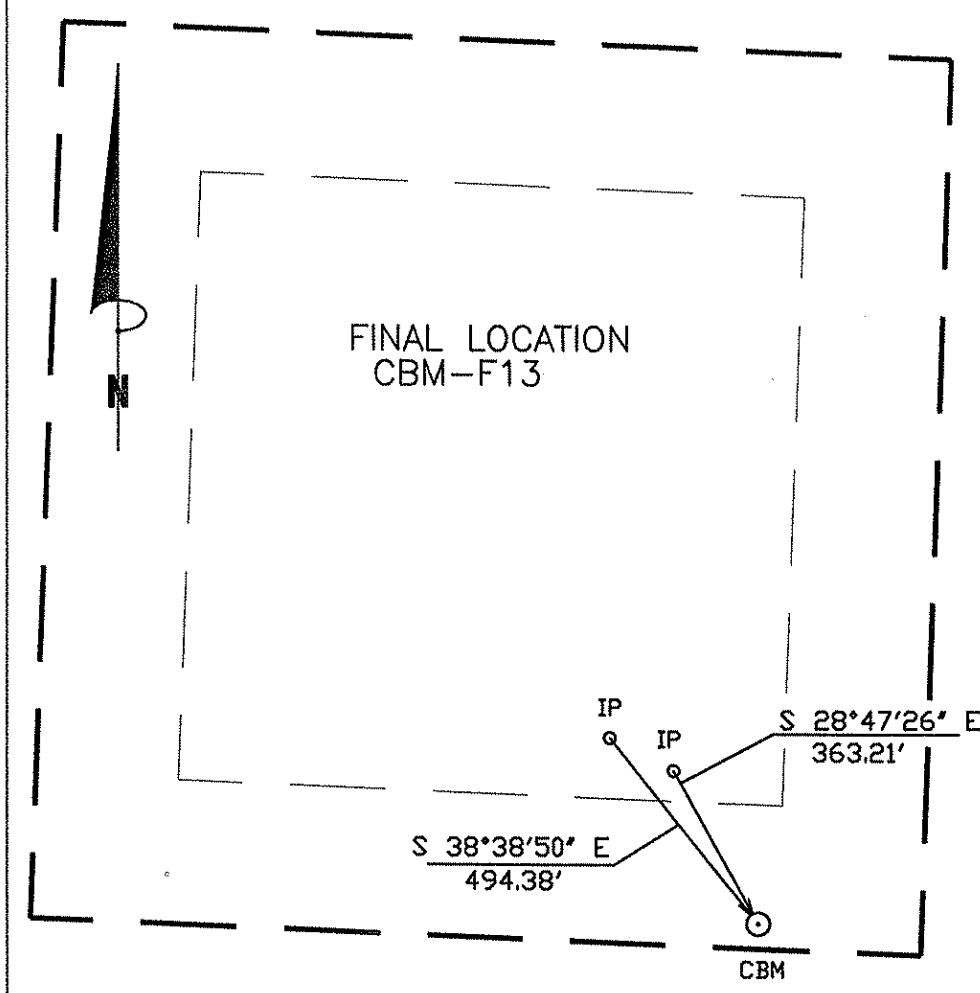
Final PDF Date: 10/16/2007

345' → ←

LATITUDE: 37°17' 30"

BEARING BASIS:
VIRGINIA STATE PLANE - SOUTH ZONE - NAD'27

LONGITUDE: 82° 02' 30"
11,800'



NOTE:
THIS WELL WAS DRILLED WITHIN 10 FT. OF PROPOSED LOCATION
ACCORDING TO 4 VAC 25-150-290 AND 45.1-361.30.

WELL LOCATION PLAT

F13FNL
1N15/129-596/23

COMPANY CNX GAS COMPANY, LLC. WELL NAME OR NUMBER CBM-F13
 TRACT NUMBER CONSOLIDATION COAL CO. QUADRANGLE GRUNDY
 DISTRICT: SOUTH GRUNDY

WELL COORDINATES (VIRGINIA STATE PLANE): STATE PLANE: N 356,461.28 E 969,169.87
 ELEVATION: 2269.76' METHOD USED TO DETERMINE ELEVATION: BY TRIG. LEVELS FROM CONSOL INC BM'S
 COUNTY BUCHANAN Scale: 1" = 400' Date 05-29-07

THIS PLAT IS A NEW PLAT _____; AN UPDATED PLAT _____; OR A FINAL LOCATION _____

⊕ Denotes the location of a well on United States Topographic Maps, scale _____ to 24,000, latitude and longitude lines being represented by border lines as shown (optional)

D.R. Price
 Licensed Professional Engineer or Licensed Land Surveyor (Affix Seal)

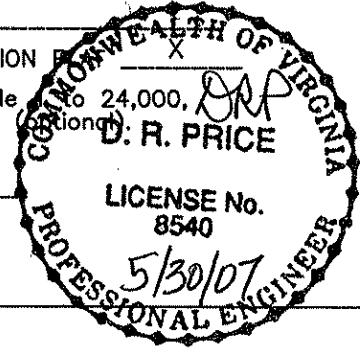


Exhibit A

Well Name: 07 CBM F13

SURFACE ELEV: 2269.76 EASTING: 969169.87 NORTHING: 356461.28

SEAM	DEPTH FROM (FT)	DEPTH TO (FT)	ELEVATION (TOSE)	THK. (FT)	REMARKS
HG1	150.90	152.70	2118.86	1.80	
	152.70	239.10	2117.06	86.40	
COAL	239.10	239.80	2030.66	0.70	
	239.80	265.90	2029.96	26.10	
SD1	265.90	267.80	2003.86	1.90	
	267.80	294.00	2001.96	26.20	
SD2	294.00	294.90	1975.76	0.90	
	294.90	301.20	1974.86	6.30	
SD3	301.20	302.00	1968.56	0.80	
	302.00	309.00	1967.76	7.00	
COAL	309.00	309.90	1960.76	0.90	
	309.90	348.80	1959.86	38.90	
UB1	348.80	349.80	1920.96	1.00	
	349.80	425.00	1919.96	75.20	
LB1	425.00	426.70	1844.76	1.70	
	426.70	491.00	1843.06	64.30	
LB2	491.00	492.20	1778.76	1.20	
	492.20	627.60	1777.56	135.40	
KN2	627.60	630.00	1642.16	2.40	MINED OUT
	630.00	723.80	1639.76	93.80	
AL1	723.80	724.20	1545.96	0.40	
	724.20	748.00	1545.56	23.80	
AL2	748.00	749.70	1521.76	1.70	
	749.70	819.10	1520.06	69.40	
RA2	819.10	820.40	1450.66	1.30	
	820.40	932.00	1449.36	111.60	
JB1	932.00	932.70	1337.76	0.70	
	932.70	955.00	1337.06	22.30	
JB3	955.00	956.00	1314.76	1.00	
	956.00	993.30	1313.76	37.30	
T2	993.30	994.20	1276.46	0.90	
	994.20	1042.10	1275.56	47.90	
T1	1042.10	1042.50	1227.66	0.40	
	1042.50	1046.20	1227.26	3.70	
TI	1046.20	1046.70	1223.56	0.50	
	1046.70	1264.40	1223.06	217.70	
*GC2	1264.40	1264.60	1005.36	0.20	
	1264.60	1265.10	1005.16	0.50	
*GC2	1265.10	1265.20	1004.66	0.10	
	1265.20	1336.90	1004.56	71.70	
*SE2	1336.90	1337.50	932.86	0.60	
	1337.50	1371.30	932.26	33.80	
*LS1	1371.30	1372.60	898.46	1.30	
	1372.60	1447.60	897.16	75.00	
*UH1	1447.60	1447.90	822.16	0.30	
	1447.90	1513.50	821.86	65.60	
*UH2	1513.50	1514.80	756.26	1.30	

	1514.80	1603.80	754.96	89.00
*P11	1603.80	1604.10	665.96	0.30
	1604.10	1607.00	665.66	2.90
*P11	1607.00	1607.70	662.76	0.70
	1607.70	1607.80	662.06	0.10
*P11	1607.80	1608.90	661.96	1.10
	1608.90	1632.50	660.86	23.60
*P10	1632.50	1633.20	637.26	0.70
	1633.20	1685.10	636.56	51.90
*LH3	1685.10	1686.90	584.66	1.80
	1686.90	1702.20	582.86	15.30
*COAL	1702.20	1702.40	567.56	0.20
	1702.40	1744.00	567.36	41.60
*P92	1744.00	1745.00	525.76	1.00
	1745.00	1807.10	524.76	62.10
*P81	1807.10	1808.30	462.66	1.20
	1808.30	1808.60	461.46	0.30
*P82	1808.60	1809.00	461.16	0.40
	1809.00	2109.00	460.76	300.00
*P3	2109.00	2110.60	160.76	1.60
	2110.60	2110.80	159.16	0.20
*P3	2110.80	2113.40	158.96	2.60
	2113.40	2144.60	156.36	31.20
*P21	2144.60	2144.80	125.16	0.20
	2144.80	2150.90	124.96	6.10
*P22	2150.90	2151.20	118.86	0.30
	2151.20	2411.42	118.56	260.22

COAL SEAMS TO BE STIMULATED WERE ADJUSTED DUE TO THE GAS WELL'S PROXIMITY TO HARPER BRANCH.

GAMMA-CALIPER LOG FROM 0 TO 695.00

GAMMA-DENSITY LOG FROM 695.00 TO TD.

NOTE: FOOTAGE NOT ADJUSTED FOR DEVIATION

FILE: H:\JIMHAZ~1\PROJECTS\GAS\F13.CMP

DATE: 06/28/07

Well: F13

Oil & Gas Show

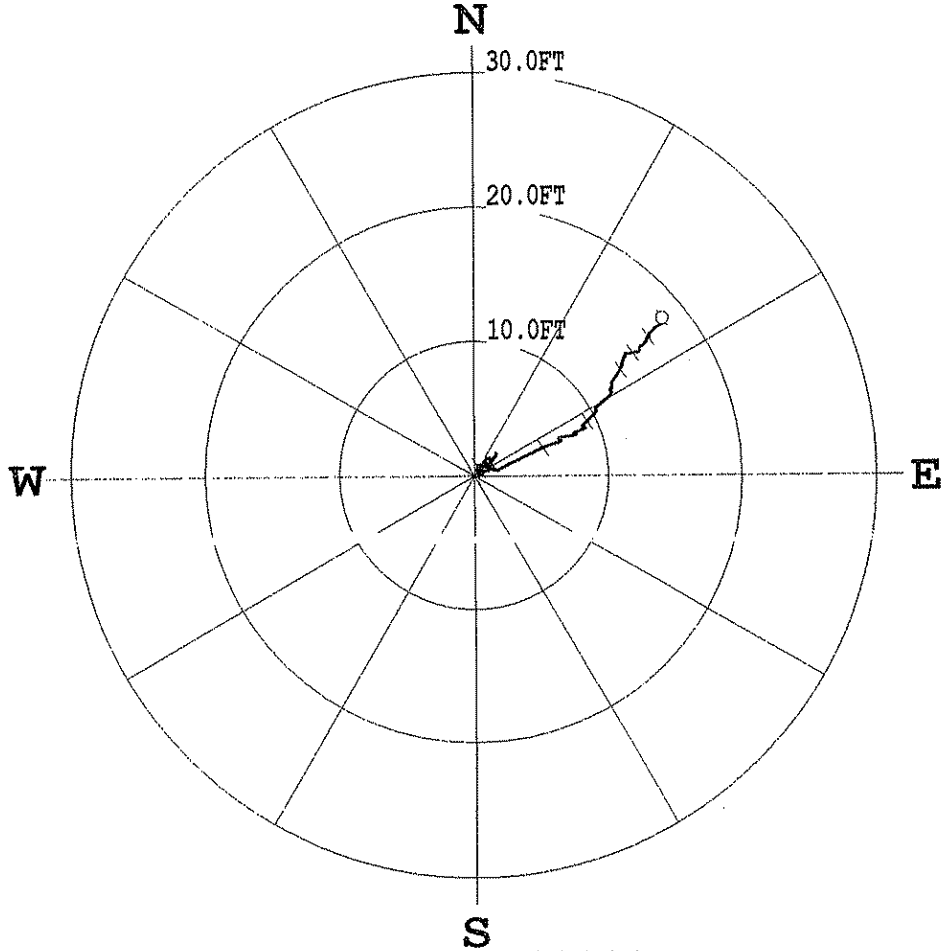
Formation	Top	Bottom	Thickness	IPF (MCFD/BOPD)	Pressure	Hours Tested
Lee/Norton	1371	1808	437			
Pocahontas	2109	2111	2			
Total IPF				42.3		

COMPU-LOG DEVIATION

CLIENT: CNX-GAS
 LOCATION: -
 HOLE ID: 07-CNX-F-13
 DATE OF LOG: 05/30/07
 PROBE: 9136CH 1244



SCALE: 10 FT/IN
 TRUE DEPTH: 241
 AZIMUTH: 50.3
 DISTANCE: 18.2
 + = 300 FT INCL
 ○ = BOTTOM OF LOG



***** COMPU-LOG - VERTICAL DEVIATION *****

CLIENT : CNX-GAS	HOLE ID. : 07-CNX-F-13
FIELD OFFICE : O'DRISCOLL	DATE OF LOG : 05/30/07
DATA FROM : -	PROBE : 9136CH , 1244
MAG. DECL. : -7.100	DEPTH UNITS : FEET
LOG: 07-CNX-F-13_05-30-07_05-19_9136CH_1.10_0.00_2411.70_DEVI.log	

CABLE DEPTH	TRUE DEPTH	NORTH DEV.	EAST DEV.	DISTANCE	AZIMUTH	SANG	SANGB
0.50	0.50	0.00	0.00	0.0	0.0	0.0	0.0
10.00	10.00	0.01	0.00	0.0	19.3	1.7	197.7
20.00	19.99	0.06	0.15	0.2	68.4	1.9	355.5
30.00	29.99	0.06	0.22	0.2	74.7	2.0	87.0
40.00	39.98	0.15	0.41	0.4	69.6	2.0	107.3
50.00	49.98	0.45	0.33	0.6	36.3	1.9	0.2
60.00	59.97	0.60	0.23	0.6	20.9	1.5	206.3
70.00	69.97	0.36	0.33	0.5	42.8	1.8	114.5
80.00	79.96	0.35	0.65	0.7	61.7	1.9	52.5
90.00	89.96	0.63	0.72	1.0	49.1	1.5	346.3
100.00	99.96	0.83	0.57	1.0	34.7	1.6	295.6
110.00	109.95	0.68	0.43	0.8	32.3	1.8	152.7
120.00	119.95	0.51	0.71	0.9	54.4	2.1	104.9
130.00	129.94	0.46	1.03	1.1	65.9	1.9	62.9
140.00	139.94	0.71	1.00	1.2	54.7	1.5	327.3
150.00	149.93	0.92	0.85	1.3	42.7	1.6	311.9
160.00	159.93	0.89	0.69	1.1	37.8	1.5	171.3
170.00	169.92	0.65	0.87	1.1	53.3	1.8	119.4
180.00	179.92	0.49	1.18	1.3	67.2	2.3	94.3
190.00	189.91	0.70	1.36	1.5	62.7	1.7	352.8
200.00	199.91	0.94	1.25	1.6	53.1	1.3	305.5
210.00	209.91	0.91	1.05	1.4	49.2	1.2	224.1
220.00	219.90	0.71	0.97	1.2	53.7	1.5	177.9
230.00	229.90	0.48	0.92	1.0	62.2	1.0	217.8
240.00	239.90	0.66	0.77	1.0	49.8	1.6	332.4
250.00	249.89	0.79	0.62	1.0	38.4	1.1	218.0
260.00	259.89	0.75	0.43	0.9	29.9	1.4	275.4

240.00	239.90	0.00	0.11	1.0	38.4	1.1	218.0
250.00	249.89	0.79	0.62	0.9	29.9	1.4	275.4
260.00	259.89	0.75	0.43	0.7	20.8	1.2	185.3
270.00	269.89	0.70	0.26	0.7	38.9	1.9	48.9
280.00	279.89	0.58	0.47	0.9	28.6	1.3	283.5
290.00	289.88	0.81	0.44	0.8	18.8	1.2	186.5
300.00	299.88	0.73	0.25	0.7	36.6	1.8	84.7
310.00	309.87	0.60	0.44	1.0	48.3	1.9	79.2
320.00	319.87	0.68	0.76	1.0	56.6	2.2	53.0
330.00	329.86	0.70	1.06	1.3	51.3	2.4	23.9
340.00	339.86	1.02	1.27	1.6	48.0	1.9	33.4
350.00	349.85	1.33	1.48	2.0	45.2	1.9	0.1
360.00	359.84	1.62	1.63	2.3	46.9	1.7	225.5
370.00	369.84	1.46	1.56	2.1	46.9	1.7	235.0
380.00	379.84	1.26	1.35	1.8	50.1	1.8	82.1
390.00	389.83	1.04	1.25	1.6	44.1	1.7	240.7
400.00	399.83	1.23	1.19	1.7	37.9	1.8	289.4
410.00	409.82	1.28	0.99	1.6	37.1	1.6	202.4
420.00	419.82	1.11	0.84	1.4	39.7	1.7	191.5
430.00	429.81	0.86	0.71	1.1	40.2	1.7	256.7
440.00	439.81	0.65	0.55	0.8	30.7	1.6	219.4
450.00	449.81	0.52	0.31	0.6	38.1	1.7	69.9
460.00	459.80	0.63	0.49	0.8	37.6	1.8	218.7
470.00	469.80	0.68	0.52	0.9	27.2	1.7	254.6
480.00	479.79	0.57	0.29	0.6	23.2	1.2	136.5
490.00	489.79	0.40	0.17	0.4	53.3	1.2	122.1
500.00	499.79	0.23	0.31	0.4	64.5	1.6	55.4
510.00	509.78	0.25	0.53	0.6	58.7	1.9	27.6
520.00	519.78	0.45	0.73	0.9	48.7	2.2	324.4
530.00	529.77	0.73	0.83	1.1	53.8	1.1	204.1
540.00	539.77	0.58	0.80	1.0	60.2	1.1	178.5
550.00	549.77	0.39	0.69	0.8	62.6	1.5	50.9
560.00	559.77	0.45	0.88	1.0	55.0	1.5	212.5
570.00	569.76	0.65	0.93	1.1	47.6	1.7	283.6
580.00	579.76	0.59	0.65	0.9	28.6	1.7	258.2
590.00	589.75	0.65	0.35	0.7	38.4	1.6	105.2
600.00	599.75	0.48	0.38	0.6	63.2	1.6	150.8
610.00	609.74	0.30	0.60	0.7	74.1	1.3	282.7
620.00	619.74	0.15	0.53	0.5	71.5	1.3	303.8
630.00	629.74	0.17	0.51	0.5	47.6	1.3	305.8
640.00	639.73	0.40	0.44	0.6	60.2	2.1	115.5
650.00	649.73	0.28	0.49	0.6	67.2	2.4	93.8
660.00	659.72	0.39	0.93	1.0	66.4	2.9	54.9
670.00	669.71	0.59	1.36	1.5	65.3	0.7	240.3
680.00	679.70	0.64	1.39	1.5	68.0	0.4	221.8
690.00	689.70	0.55	1.36	1.5	73.1	2.4	91.5
700.00	699.70	0.44	1.46	1.5	77.1	1.2	42.9
710.00	709.69	0.39	1.71	1.8	74.7	1.0	74.7
720.00	719.69	0.52	1.88	2.0	73.4	1.5	44.5
730.00	729.69	0.61	2.06	2.1	73.1	1.3	38.4
740.00	739.69	0.68	2.25	2.4	71.6	1.2	69.5
750.00	749.68	0.81	2.43	2.6	70.7	1.3	58.3
760.00	759.68	0.91	2.60	2.8	70.3	1.2	62.8
770.00	769.68	1.00	2.80	3.0	70.3	1.4	60.6
780.00	779.68	1.07	2.98	3.2	69.8	1.2	67.8
790.00	789.67	1.16	3.14	3.3	69.7	1.1	54.6
800.00	799.67	1.23	3.31	3.5	69.1	1.1	176.5
810.00	809.67	1.32	3.47	3.7	69.3	0.9	59.3
820.00	819.67	1.38	3.64	3.9	69.0	1.2	80.4
830.00	829.67	1.45	3.79	4.1	68.9	1.2	62.8
840.00	839.67	1.53	3.96	4.2	68.4	1.3	63.4
850.00	849.66	1.64	4.14	4.5	68.6	1.2	65.5
860.00	859.66	1.70	4.33	4.7	67.9	1.4	42.9
870.00	869.66	1.83	4.50	4.9	68.1	1.1	64.7
880.00	879.66	1.89	4.70	5.1	67.9	1.2	60.5
890.00	889.65	1.98	4.88	5.3	67.7	1.2	52.8
900.00	899.65	2.08	5.07	5.5	67.8	1.0	69.6
910.00	909.65	2.14	5.25	5.7	67.8	1.1	73.7
920.00	919.65	2.21	5.41	6.0	67.8	1.1	82.2
930.00	929.65	2.27	5.58	6.2	67.8	1.1	34.9
940.00	939.64	2.34	5.74	6.4	68.2	1.3	80.1
950.00	949.64	2.38	5.94	6.6	68.3	1.1	79.6
960.00	959.64	2.44	6.13	6.8	68.4	1.2	68.0
970.00	969.64	2.50	6.32	6.9	67.6	1.1	296.9
980.00	979.64	2.64	6.39	6.9	66.2	1.6	195.9
990.00	989.63	2.79	6.32	6.8	66.4	1.2	19.7
1000.00	999.63	2.73	6.25	6.8	66.2	1.8	91.8
1010.00	1009.62	2.84	6.43	7.0	66.9	1.6	86.3
1020.00	1019.62	2.86	6.71	7.3	67.1	1.9	102.9
1030.00	1029.62	2.94	6.98	7.6	67.7	1.9	83.9
1040.00	1039.61	2.98	7.26	7.9	68.0	1.7	42.3
1050.00	1049.61	3.05	7.55	8.1	67.3	1.8	275.0
1060.00	1059.60	3.10	7.39	8.0	66.7	1.2	64.3
1070.00	1069.60	3.22	7.49	8.2	66.8	0.9	73.2
1080.00	1079.60	3.28	7.66	8.3	66.9	1.0	62.6
1090.00	1089.60	3.33	7.81	8.5	66.9	1.0	66.3
1100.00	1099.59	3.40	7.96	8.7	66.9	0.8	57.0
1110.00	1109.59	3.46	8.10	8.8	66.9	0.8	66.6
1120.00	1119.59	3.52	8.22	8.9	66.9	0.7	103.1
1130.00	1129.59	3.53	8.27	9.0	66.7	0.8	307.6
1140.00	1139.59	3.54	8.20	8.9	65.8	1.1	314.3
1150.00	1149.59	3.68	8.17	9.0	65.4	0.8	17.1
1160.00	1159.59	3.67	8.01	8.8	65.1	0.8	49.7
1170.00	1169.59	3.77	8.11	8.9	64.9	0.8	49.8
1180.00	1179.58	3.85	8.20	9.1	64.5	1.0	2.1
1190.00	1189.58	3.95	8.28	9.2	64.4	0.8	23.8
1200.00	1199.58	4.03	8.39	9.3			

1180.00	1179.58	3.85	8.20	9.1	64.5	1.0	2.1
1190.00	1189.58	3.95	8.28	9.2	64.5	1.0	2.1
1200.00	1199.58	4.03	8.39	9.3	64.4	0.8	23.8
1210.00	1209.58	4.14	8.50	9.5	64.0	0.9	48.6
1220.00	1219.58	4.26	8.61	9.6	63.7	1.0	46.0
1230.00	1229.58	4.37	8.71	9.8	63.4	1.0	47.7
1240.00	1239.58	4.49	8.83	9.9	63.1	0.9	39.0
1250.00	1249.58	4.61	8.94	10.1	62.7	1.0	41.1
1260.00	1259.57	4.74	9.04	10.2	62.3	1.1	38.6
1270.00	1269.57	4.88	9.08	10.3	61.7	0.9	340.2
1280.00	1279.57	5.04	9.03	10.3	60.8	1.6	59.3
1290.00	1289.57	5.17	9.21	10.6	60.7	1.2	51.8
1300.00	1299.57	5.31	9.38	10.8	60.5	1.3	51.8
1310.00	1309.56	5.48	9.52	11.0	60.1	1.4	57.2
1320.00	1319.56	5.60	9.70	11.2	60.0	1.2	44.2
1330.00	1329.56	5.75	9.86	11.4	59.7	1.4	52.3
1340.00	1339.56	5.92	10.04	11.7	59.5	1.3	36.6
1350.00	1349.55	6.10	10.19	11.9	59.1	1.4	21.5
1360.00	1359.55	6.28	10.14	11.9	58.2	1.2	263.5
1370.00	1369.55	6.41	10.13	12.0	57.7	1.4	40.6
1380.00	1379.54	6.53	10.27	12.2	57.6	1.4	330.9
1390.00	1389.54	6.71	10.26	12.3	56.8	1.1	355.1
1400.00	1399.54	6.87	10.23	12.3	56.1	1.0	38.9
1410.00	1409.54	7.00	10.31	12.5	55.8	0.9	42.7
1420.00	1419.54	7.12	10.39	12.6	55.6	0.8	22.2
1430.00	1429.54	7.23	10.44	12.7	55.3	1.0	22.9
1440.00	1439.54	7.33	10.52	12.8	55.2	0.7	27.7
1450.00	1449.54	7.42	10.60	12.9	55.0	0.8	33.1
1460.00	1459.53	7.51	10.68	13.1	54.9	0.6	10.9
1470.00	1469.53	7.62	10.72	13.2	54.6	0.7	50.5
1480.00	1479.53	7.70	10.76	13.2	54.4	0.6	21.8
1490.00	1489.53	7.79	10.81	13.3	54.2	0.6	28.0
1500.00	1499.53	7.87	10.87	13.4	54.1	0.6	6.7
1510.00	1509.53	7.95	10.90	13.5	53.9	0.5	68.1
1520.00	1519.53	8.01	10.93	13.6	53.8	0.7	36.0
1530.00	1529.53	8.08	10.97	13.6	53.6	0.4	337.5
1540.00	1539.53	8.12	11.01	13.7	53.6	0.3	30.7
1550.00	1549.53	8.16	10.99	13.7	53.4	0.4	240.3
1560.00	1559.53	8.16	10.94	13.6	53.3	0.8	359.6
1570.00	1569.53	8.27	11.00	13.8	53.1	0.8	17.6
1580.00	1579.53	8.36	11.05	13.9	52.9	0.6	89.4
1590.00	1589.53	8.45	11.01	13.9	52.5	0.5	2.9
1600.00	1599.53	8.45	11.07	13.9	52.6	0.7	37.9
1610.00	1609.53	8.54	11.04	14.0	52.3	0.6	40.6
1620.00	1619.53	8.60	11.08	14.0	52.2	0.4	111.7
1630.00	1629.53	8.64	11.10	14.1	52.1	0.4	21.0
1640.00	1639.53	8.68	11.13	14.1	52.1	0.3	10.8
1650.00	1649.53	8.69	11.16	14.1	52.1	0.4	5.3
1660.00	1659.53	8.72	11.19	14.2	52.1	0.3	14.1
1670.00	1669.53	8.75	11.21	14.2	52.0	0.2	78.5
1680.00	1679.53	8.77	11.23	14.3	52.0	0.2	23.8
1690.00	1689.53	8.79	11.22	14.3	51.9	0.2	252.9
1700.00	1699.53	8.82	11.24	14.3	51.9	0.6	77.1
1710.00	1709.52	8.88	11.20	14.3	51.6	0.6	8.8
1720.00	1719.52	8.90	11.23	14.3	51.6	0.5	30.2
1730.00	1729.52	8.97	11.22	14.4	51.3	0.1	311.4
1740.00	1739.52	8.99	11.22	14.4	51.3	0.4	270.8
1750.00	1749.52	9.02	11.24	14.4	51.3	0.4	81.4
1760.00	1759.52	9.02	11.33	14.5	51.5	0.6	78.6
1770.00	1769.52	9.03	11.44	14.6	51.7	0.7	78.7
1780.00	1779.52	9.05	11.56	14.7	51.9	0.8	90.2
1790.00	1789.52	9.07	11.68	14.8	52.2	0.7	80.0
1800.00	1799.52	9.08	11.78	14.9	52.4	0.8	67.3
1810.00	1809.52	9.12	11.90	15.0	52.5	0.8	86.7
1820.00	1819.52	9.12	12.01	15.1	52.8	0.9	85.5
1830.00	1829.52	9.16	12.14	15.2	53.0	0.8	82.8
1840.00	1839.52	9.18	12.25	15.3	53.2	0.6	93.1
1850.00	1849.52	9.27	12.30	15.4	53.0	0.9	344.2
1860.00	1859.52	9.39	12.28	15.5	52.6	0.5	337.7
1870.00	1869.52	9.45	12.26	15.5	52.4	0.5	39.8
1880.00	1879.51	9.49	12.30	15.5	52.4	0.3	55.0
1890.00	1889.51	9.52	12.34	15.6	52.4	0.2	63.4
1900.00	1899.51	9.54	12.37	15.6	52.4	0.2	32.5
1910.00	1909.51	9.57	12.41	15.7	52.3	0.2	28.8
1920.00	1919.51	9.60	12.45	15.7	52.3	0.3	29.7
1930.00	1929.51	9.63	12.48	15.8	52.4	0.2	21.5
1940.00	1939.51	9.65	12.52	15.8	52.4	0.2	43.9
1950.00	1949.51	9.68	12.56	15.9	52.4	0.3	63.0
1960.00	1959.51	9.71	12.59	15.9	52.4	0.3	47.2
1970.00	1969.51	9.73	12.62	15.9	52.4	0.2	54.3
1980.00	1979.51	9.76	12.66	16.0	52.4	0.3	94.7
1990.00	1989.51	9.78	12.69	16.0	52.4	0.4	24.4
2000.00	1999.51	9.81	12.72	16.1	52.4	0.2	28.5
2010.00	2009.51	9.85	12.74	16.1	52.3	0.4	321.4
2020.00	2019.51	9.90	12.79	16.2	52.3	0.8	106.4
2030.00	2029.51	9.96	12.80	16.2	52.1	0.8	295.4
2040.00	2039.51	10.04	12.83	16.3	51.9	0.7	2.7
2050.00	2049.51	10.12	12.80	16.3	51.7	0.3	69.0
2060.00	2059.51	10.15	12.82	16.4	51.6	0.3	36.6
2070.00	2069.51	10.18	12.85	16.4	51.6	0.3	55.2
2080.00	2079.51	10.20	12.89	16.4	51.6	0.3	50.2
2090.00	2089.51	10.23	12.92	16.5	51.6	0.3	53.7
2100.00	2099.51	10.27	12.94	16.5	51.6	0.2	67.8
2110.00	2109.51	10.31	12.97	16.6	51.5	0.4	29.4
2120.00	2119.51	10.30	13.01	16.6	51.6	0.5	231.5
2130.00	2129.51	10.29	13.03	16.6	51.7	0.4	191.4
2140.00	2139.51	10.33	12.96	16.6	51.4	1.0	329.6

2110.00	2109.51	10.31	12.97	16.6	51.6	0.5	231.5
2120.00	2119.51	10.30	13.01	16.6	51.7	0.4	191.4
2130.00	2129.51	10.29	13.03	16.6	51.4	1.0	329.6
2140.00	2139.51	10.33	12.96	16.6	51.3	0.6	2.1
2150.00	2149.51	10.41	13.01	16.7	51.1	0.3	63.6
2160.00	2159.51	10.48	12.99	16.7	51.1	0.3	62.7
2170.00	2169.51	10.51	13.03	16.7	51.1	0.4	32.8
2180.00	2179.51	10.54	13.07	16.8	51.2	0.6	355.8
2190.00	2189.51	10.57	13.12	16.8	51.1	0.4	41.4
2200.00	2199.51	10.62	13.16	16.9	51.1	0.5	18.8
2210.00	2209.51	10.66	13.21	17.0	51.1	0.3	57.3
2220.00	2219.51	10.71	13.25	17.0	51.0	0.5	65.3
2230.00	2229.51	10.76	13.29	17.1	51.0	0.4	29.9
2240.00	2239.51	10.80	13.33	17.2	51.0	0.4	10.7
2250.00	2249.51	10.84	13.37	17.2	50.9	0.3	38.8
2260.00	2259.51	10.88	13.41	17.3	50.9	0.3	26.4
2270.00	2269.51	10.92	13.44	17.3	50.8	0.9	56.3
2280.00	2279.50	10.94	13.42	17.3	50.9	0.6	61.9
2290.00	2289.50	10.99	13.53	17.4	51.0	0.4	97.3
2300.00	2299.50	11.05	13.63	17.5	51.1	0.9	93.6
2310.00	2309.50	11.10	13.74	17.7	51.1	0.7	64.0
2320.00	2319.50	11.15	13.85	17.8	51.2	0.7	57.1
2330.00	2329.50	11.21	13.94	17.9	51.0	0.6	4.1
2340.00	2339.50	11.31	13.99	18.0	51.2	0.8	76.5
2350.00	2349.50	11.34	14.12	18.1	51.2	0.8	6.0
2360.00	2359.50	11.43	14.19	18.2	50.8	1.0	237.2
2370.00	2369.50	11.53	14.11	18.2	50.5	0.3	46.4
2380.00	2379.50	11.56	14.02	18.2	50.4	0.4	15.9
2390.00	2389.50	11.62	14.04	18.2	50.3	0.5	64.1
2400.00	2399.50	11.65	14.03	18.2	50.2	1.1	11.8
2410.00	2409.49	11.66	14.01	18.2	50.3	0.5	183.8
2411.70	2411.19	11.66	14.02	18.2			

DRILL DATA HOLE-NOAH HORN WELL DRILLING, INC

COMPANY: CNX

HOLE #: F-13

LOCATION: CHILDRESS BRANCH

DRILL RIG #: 17

DATE STARTED: 05-24-07

DATED COMPLETED: 05-30-07

ELECTRIC LOGGED: YES

GROUTED: YES

DEPTH		THICKNESS	STRATA	REMARKS
FROM	TO	FT	DESCRIPTION, VOIDS ETC	
0	34	34	OVERBURDEN	
34	35	1	BROWN SAND	
35	60	25	BROWN SAND/SHALE	
60	90	30	SHALE	
90	120	30	SANDY SHALE/COAL/SHALE	
120	150	30	SHALE/SAND	
150	180	30	COAL/SANDY SHALE	
180	210	30	SANDY SHALE/SAND	
210	240	30	SANDY SHALE	
240	360	120	SANDY SHALE/COAL/SANDY SHALE	
360	390	30	SAND/SANDY SHALE	
390	420	30	SANDY SHALE/SAND	
420	450	30	SAND/SANDY SHALE/COAL	
450	480	30	SANDY SHALE/SAND	
480	510	30	SANDY SHALE/COAL/SANDY SHALE	
510	570	60	SANDY SHALE/SAND	
570	626	56	SAND/SANDY SHALE	
626	630	4	VOID	
630	660	30	SAND/SANDY SHALE	
660	690	30	SANDY SHALE	
690	720	30	SANDY SHALE/SAND	
720	750	30	SAND STONE/COAL/SANDY SHALE	
750	780	30	SANDY SHALE	
780	810	30	SANDY SHALE/COAL	
810	840	30	SAND STONE	
840	870	30	SAND STONE/SANDY SHALE	
870	900	30	SANDY SHALE	
900	930	30	SANDY SHALE/COAL/SANDY SHALE	
930	990	60	SAND STONE/COAL/SANDY SHALE	
990	1020	30	SAND STONE/SANDY SHALE	
1020	1050	30	SANDY SHALE	
1050	1080	30	SANDY SHALE/SAND STONE	
1080	1230	150	SANDY SHALE	
1230	1290	60	SANDY SHALE/SHALE	
1290	1320	30	SHALE/SANDY SHALE	
1320	1350	30	SANDY SHALE/SAND STONE	
1350	1380	30	SANDY SHALE/COAL/SAND STONE	
1380	1410	30	SANDY SHALE/SAND STONE	
1410	1440	30	SANDY SHALE	
1440	1470	30	SAND STONE	
1470	1500	30	SAND STONE/SANDY SHALE	
1500	1530	30	SANDY SHALE	

1530	1560	30	SAND STONE/SANDY SHALE
1560	1590	30	SANDY SHALE
1590	1620	30	SANDY SHALE/COAL/SANDY SHALE
1620	1650	30	SANDY SHALE/SHALE
1650	1680	30	SANDY SHALE/COAL
1680	1710	30	SAND/COAL/SANDY SHALE
1710	1740	30	SANDY SHALE
1740	1800	60	SANDY SHALE/COAL/SANDY SHALE
1800	1830	30	SANDY SHALE/COAL/SAND
1830	1860	30	SAND/SANDY SHALE
1860	1920	60	SAND STONE
1920	1950	30	SAND/SANDY SHALE
1950	1980	30	SANDY SHALE/SAND
1980	2040	60	SAND STONE
2040	2070	30	SAND/SANDY SHALE
2070	2100	30	SANDY SHALE/SAND/SANDY SHALE
2100	2103	3	SANDY SHALE
2103	2107	4	P-3 COAL
2107	2130	23	SANDY SHALE
2130	2160	30	SANDY SHALE/COAL/SANDY SHALE
2160	2190	30	SANDY SHALE/SAND
2190	2250	60	SANDY SHALE
2250	2280	30	SANDY SHALE/SHALE
2280	2310	30	SHALE/SANDY SHALE
2310	2410	100	SANDY SHALE/SHALE

2410' – TOTAL DEPTH
35' – 13 3/8" CASING
707.1' – 7" CASING
2170.53' – 4 1/2" CASING