



Commonwealth of Virginia
 Department of Mines, Minerals, and Energy
 Division of Gas and Oil
 P.O. Box 1416; Abingdon, VA 24212
 Telephone: (276) 676-5423

Tracking Number: 1
 Company: CNX Gas Company LLC
 File Number: BU-2983
 Operations Name: CBM I48A W/PL
 Operation Type: Coalbed/Pipeline
 Drilling Report Type: Original

DRILLING REPORT (DGO-GO-14)

1. Drilling Data

Date drilling commenced: 12/8/2005 Drilling Contractor: Noah Horn Well Drilling
 Date drilling completed: 12/13/2005 Rig Type: Rotary Cable Tool
 Driller's Total Depth (feet): 2,510
 Log Total Depth (feet): 2,512 Coal Seam At Total Depth Pocahontas

2. Final Location Plat (as required by 4 VAC25-150-360.C.)

Permitted State Plane X 1,034,172 Final Plat State Plane X: 1,034,179
 Permitted State Plane Y: 349,609 Final Plat State Plane Y: 349,607

Plat Previously Submitted Or...

List of Attached Items:

Description	FileName
I48A Plat	plat i48a.pdf

3. Geological Data

Fresh Water At:

Depth (in feet)	Rate	Unit of Measure
420	Damp	

Salt Water At:

Depth (in feet)	Rate	Unit of Measure
-----------------	------	-----------------

Coal Seams

List of Attached Items:

Description	FileName
Coal Seams I48A	survey i48.pdf

Gas and Oil Shows

List of Attached Items:

Description	FileName
Gas shows I48A	GasOilShows I48A.xls

4. Electric Logs (As required by 4VAC25-150-280.A.)

List all logs run: Caliper, Density, Gamma, Temperature, Deviation

Did logs disclose vertical locations of a coal seam? Yes No

5. Survey Results (As required by 4VAC25-150-280.B.2)

List of Attached Items:

Description	FileName
Survey I48A	I48A directional.pdf

6. Casing and Tubing Program

List of Attached Items:

Description	FileName
Casing I 48A	Casing Program I48a.xls

7. Remarks

Use this space to note any conditions or occurrences, such as lost circulation, fishing jobs, junk left in hole, sidetracks, squeeze jobs, etc., not shown above. Include data and depth of condition/occurrence.

8. Drillers Log

Compiled By: _____

List of Attached Items:

Description	FileName
log I48A	drill log I48.pdf

9. Comments

10. Signature

Permitee: CNX Gas Company LLC Date: 10/17/2006 (Company)

Signed By: Leslie Arrington Title: Manager (Signature)

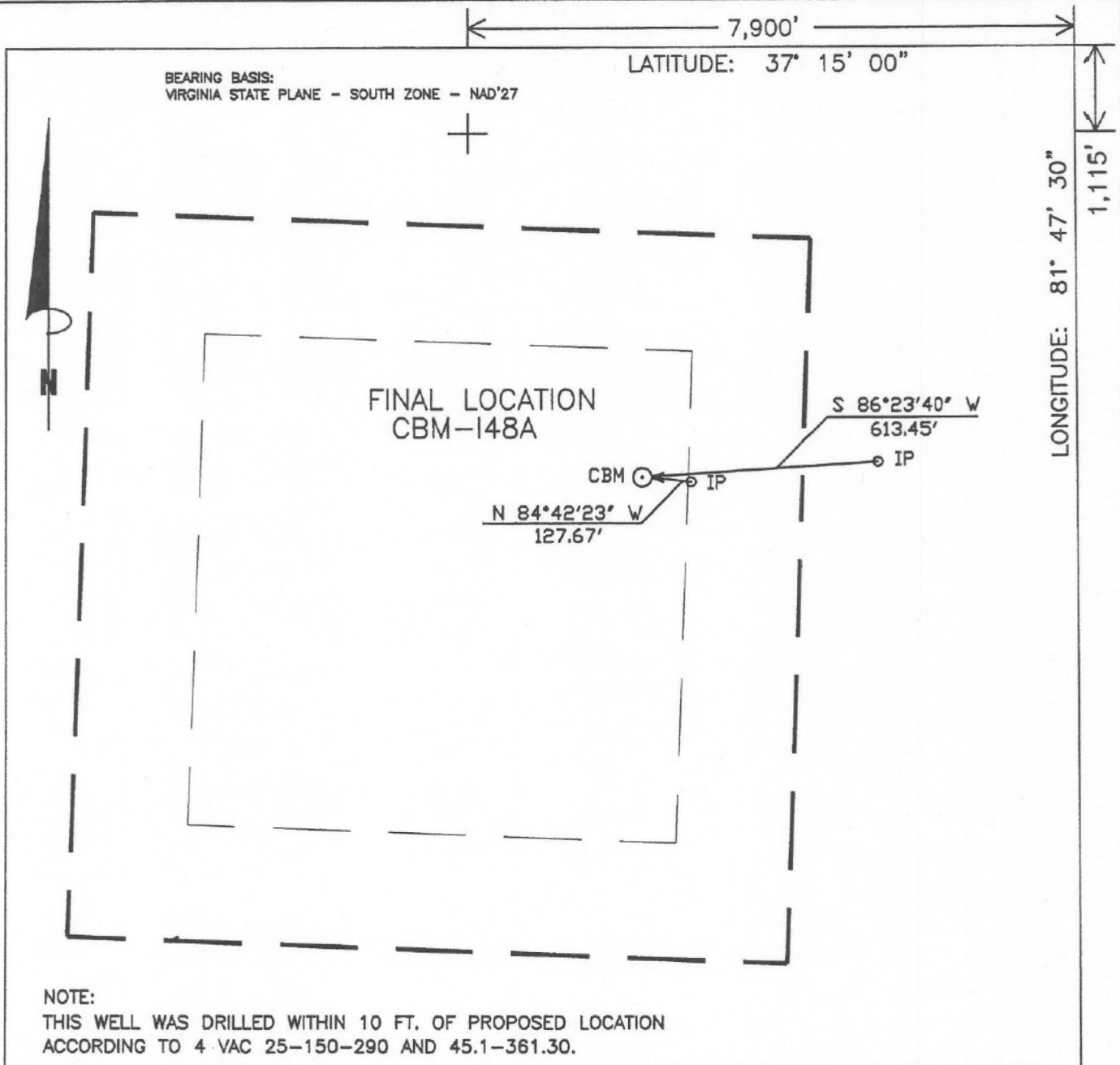
INTERNAL USE ONLY

Submit Date: 10/17/2006

Status: Inspr Approved

Date: 2/7/2007

Final PDF Date: 2/15/2007



WELL LOCATION PLAT

148AFNL
CON32/02-0503/10

COMPANY CNX GAS COMPANY, LLC. WELL NAME OR NUMBER CBM-148A
 TRACT NUMBER POCAHONTAS MINING COMPANY QUADRANGLE JEWELL RIDGE
 DISTRICT: GARDEN

WELL COORDINATES (VIRGINIA STATE PLANE): STATE PLANE: N 349,607.42 E 1,034,179.47
 ELEVATION: 2753.87' METHOD USED TO DETERMINE ELEVATION: BY TRIG. LEVELS FROM CONSOL INC BM'S
 COUNTY BUCHANAN Scale: 1" = 400' Date 12-15-05

THIS PLAT IS A NEW PLAT _____; AN UPDATED PLAT _____; OR A FINAL LOCATION PLAT _____

⊕ Denotes the location of a well on United States Topographic Maps, scale 1" = 24,000, latitude and longitude lines being represented by border lines as shown (optional).

D.R. Price

 Licensed Professional Engineer or Licensed Land Surveyor (Affix Seal)

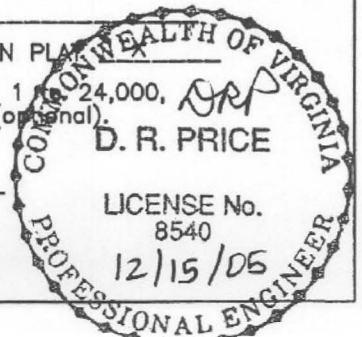


Exhibit A

Well Name: 05-CNX-I-48-A

SURFACE ELEV: 2753.87 EASTING: 1034179.47 NORTHING: 349607.42

SEAM	DEPTH FROM (FT)	DEPTH TO (FT)	ELEVATION (TOSE)	THK. (FT)	REMARKS
UB1	61.70	63.90	2692.17	2.20	
	63.90	132.00	2689.97	68.10	
LB1	132.00	133.00	2621.87	1.00	
	133.00	211.00	2620.87	78.00	
LB2	211.00	213.90	2542.87	2.90	
	213.90	360.90	2539.97	147.00	
KN1	360.90	361.30	2392.97	0.40	
	361.30	375.90	2392.57	14.60	
KN2	375.90	376.90	2377.97	1.00	
	376.90	384.00	2376.97	7.10	
COAL	384.00	384.30	2369.87	0.30	
	384.30	490.80	2369.57	106.50	
AL1	490.80	491.00	2263.07	0.20	
	491.00	531.20	2262.87	40.20	
AL2	531.20	533.10	2222.67	1.90	
	533.10	572.20	2220.77	39.10	
RA1	572.20	573.00	2181.67	0.80	
	573.00	621.20	2180.87	48.20	
RA2	621.20	623.00	2132.67	1.80	
	623.00	761.70	2130.87	138.70	
JB1	761.70	763.00	1992.17	1.30	
	763.00	789.70	1990.87	26.70	
JB2	789.70	790.00	1964.17	0.30	
	790.00	825.00	1963.87	35.00	
JB3	825.00	829.40	1928.87	4.40	
	829.40	846.90	1924.47	17.50	
T2	846.90	848.20	1906.97	1.30	
	848.20	849.10	1905.67	0.90	
T2	849.10	851.10	1904.77	2.00	
	851.10	858.20	1902.77	7.10	
T1	858.20	858.40	1895.67	0.20	
	858.40	991.00	1895.47	132.60	
US1	991.00	991.10	1762.87	0.10	
	991.10	1030.00	1762.77	38.90	
COAL	1030.00	1030.80	1723.87	0.80	
	1030.80	1066.40	1723.07	35.60	
*US2	1066.40	1066.90	1687.47	0.50	
	1066.90	1178.20	1686.97	111.30	
*GC1	1178.20	1179.00	1575.67	0.80	
	1179.00	1179.60	1574.87	0.60	
*GC2	1179.60	1180.20	1574.27	0.60	
	1180.20	1249.00	1573.67	68.80	
*SE2	1249.00	1249.90	1504.87	0.90	
	1249.90	1297.00	1503.97	47.10	
*LS1	1297.00	1297.80	1456.87	0.80	
	1297.80	1298.50	1456.07	0.70	
*LS2	1298.50	1298.90	1455.37	0.40	
	1298.90	1348.20	1454.97	49.30	
*LS3	1348.20	1348.60	1405.67	0.40	
	1348.60	1369.00	1405.27	20.40	
*COAL	1369.00	1370.10	1384.87	1.10	
	1370.10	1430.60	1383.77	60.50	
*UH2	1430.60	1431.00	1323.27	0.40	
	1431.00	1431.40	1322.87	0.40	
*UH3	1431.40	1432.00	1322.47	0.60	
	1432.00	1492.40	1321.87	60.40	
*MH1	1492.40	1493.70	1261.47	1.30	
	1493.70	1556.20	1260.17	62.50	

*MH2	1556.20	1557.00	1197.67	0.80
	1557.00	1694.90	1196.87	137.90
*LH3	1694.90	1695.00	1058.97	0.10
	1695.00	1722.70	1058.87	27.70
*COAL	1722.70	1723.00	1031.17	0.30
	1723.00	1723.60	1030.87	0.60
*P91	1723.60	1724.00	1030.27	0.40
	1724.00	1742.40	1029.87	18.40
*P92	1742.40	1743.00	1011.47	0.60
	1743.00	1760.00	1010.87	17.00
*P81	1760.00	1760.90	993.87	0.90
	1760.90	1830.40	992.97	69.50
*COAL	1830.40	1830.90	923.47	0.50
	1830.90	1850.90	922.97	20.00
*COAL	1850.90	1851.10	902.97	0.20
	1851.10	1851.40	902.77	0.30
*P72	1851.40	1852.00	902.47	0.60
	1852.00	1977.00	901.87	125.00
*COAL	1977.00	1977.20	776.87	0.20
	1977.20	2011.90	776.67	34.70
*P61	2011.90	2012.30	741.97	0.40
	2012.30	2033.50	741.57	21.20
*P62	2033.50	2035.10	720.37	1.60
	2035.10	2060.00	718.77	24.90
*P51	2060.00	2061.60	693.87	1.60
	2061.60	2095.00	692.27	33.40
*P52	2095.00	2096.10	658.87	1.10
	2096.10	2098.10	657.77	2.00
*COAL	2098.10	2098.20	655.77	0.10
	2098.20	2127.90	655.67	29.70
*COAL	2127.90	2130.30	625.97	2.40
	2130.30	2146.60	623.57	16.30
*P41	2146.60	2146.90	607.27	0.30
	2146.90	2168.10	606.97	21.20
*P31	2168.10	2168.90	585.77	0.80
	2168.90	2220.09	584.97	51.19
*P32	2220.09	2221.91	533.78	1.82
*P33	2221.91	2222.96	531.96	1.05
*P34	2222.96	2223.60	530.91	0.64
	2223.60	2280.00	530.27	56.40
*P21	2280.00	2280.10	473.87	0.10
	2280.10	2343.90	473.77	63.80
*P01	2343.90	2344.00	409.97	0.10
	2344.00	2396.90	409.87	52.90
*SJ3	2396.90	2397.00	356.97	0.10
	2397.00	2404.00	356.87	7.00
*SJ2	2404.00	2404.40	349.87	0.40
	2404.40	2511.98	349.47	107.58

NOTE: FOOTAGE NOT ADJUSTED FOR DEVIATION
 COAL SEAMS TO BE STIMULATED WERE ADJUSTED DUE TO THE GAS
 WELL'S PROXIMITY TO INDIAN BRANCH.
 GAMMA-CALIPER LOG FROM 0 TO 909.00
 GAMMA-DENSITY LOG FROM 909.00 TO TD.

FILE: C:\VP\GAS\I48A.CMP
 DATE: 01/06/06

FORMATION	TOP	BOTTOM	THICKNESS	IPF (MCFD/BOPD)	PRESSURE	HOURS TESTED
Lee/Norton	1369	1494		125 (See Below)		
Pocahontas	2033	2223		190 (See Below)		
Total IPF				62.8 thru 1" Orifice		

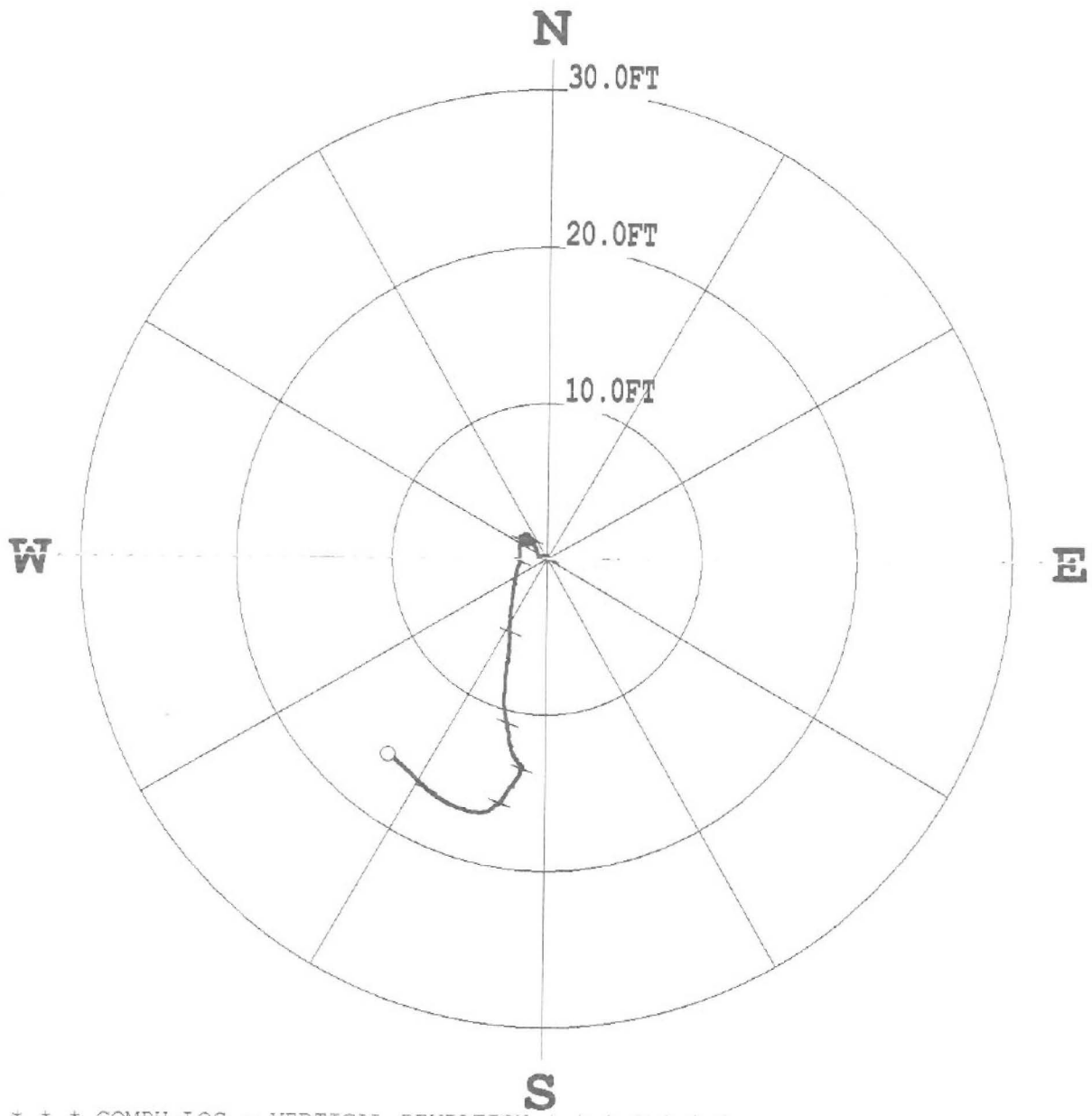
PLAN VIEW COMPU-LOG DEVIATION

CLIENT: CONSOL ENERGY
 LOCATION: -
 HOLE ID: 05-CNX-I-48A
 DATE OF LOG: 12/13/05
 PROBE: 9136CH 1244



MAG DECL: -7.1

SCALE: 10 FT/IN
 TRUE DEPTH: 2511.51 FT
 AZIMUTH: 218.9
 DISTANCE: 16.1 FT
 + = 300 FT INCR
 ○ = BOTTOM OF HOLE



***** COMPU-LOG - VERTICAL DEVIATION *****

CLIENT	: CONSOL ENERGY	HOLE ID.	: 05-CNX-I-48A
FIELD OFFICE	: O'DRISCOLL	DATE OF LOG	: 12/13/05
DATA FROM	: -	PROBE	: 9136CH , 1244
MAG. DECL.	: -7.100	DEPTH UNITS	: FEET
LOG: 05-CNX-I-48A_12-13-05_12-11_9136CH_1 0.00 2511.90 DEVI.log			

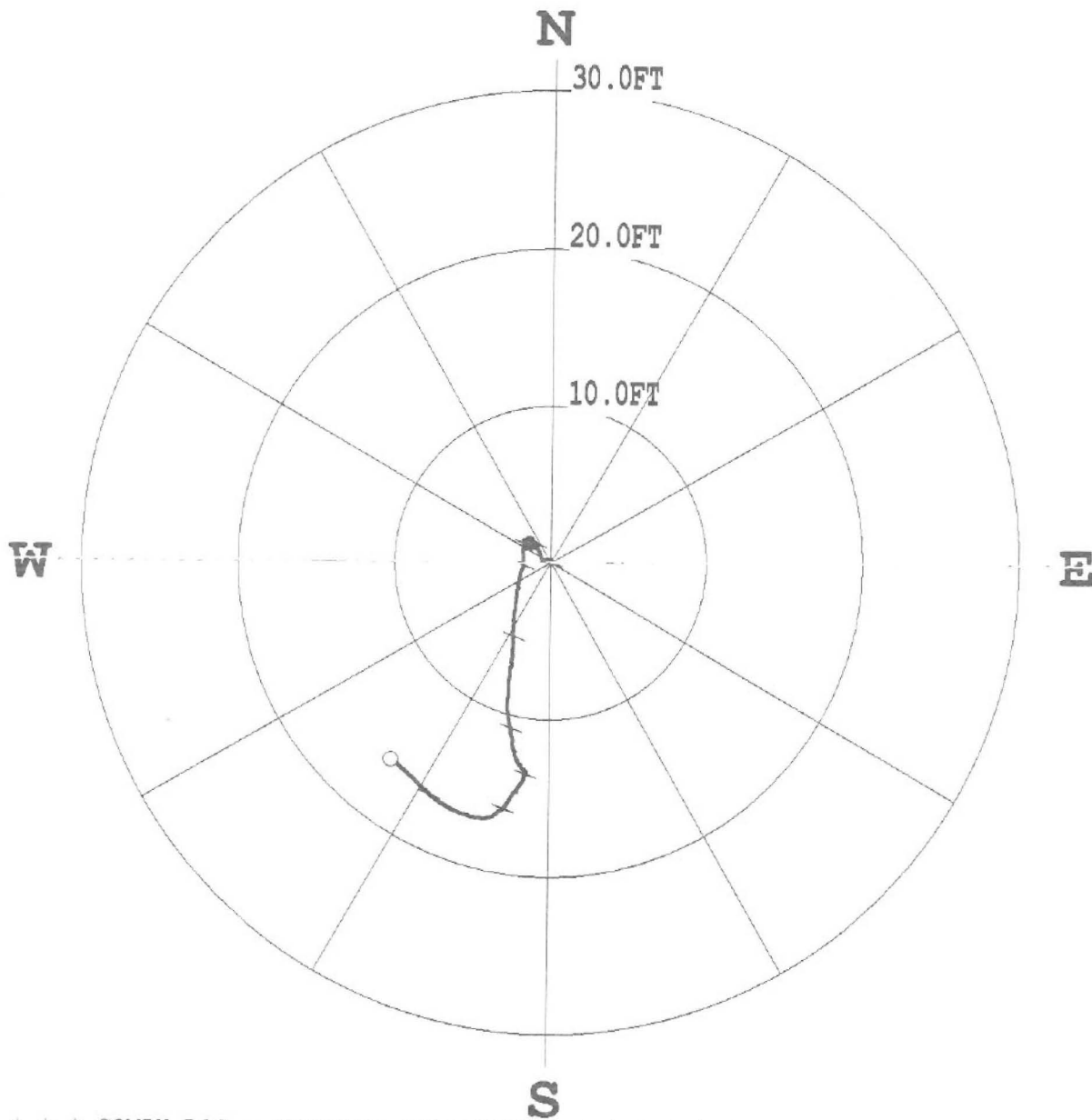
PLAN VIEW COMPU-LOG DEVIATION

CLIENT: CONSOL ENERGY
 LOCATION: -
 HOLE ID: 05-CNX-I-48A
 DATE OF LOG: 12/13/05
 PROBE: 9136CH 1244



MAG DECL: -7.1

SCALE: 10 FT/IN
 TRUE DEPTH: 2511.51 FT
 AZIMUTH: 218.9
 DISTANCE: 16.1 FT
 + = 300 FT INCR
 ○ = BOTTOM OF HOLE



***** COMPU-LOG - VERTICAL DEVIATION *****

CLIENT	: CONSOL ENERGY	HOLE ID.	: 05-CNX-I-48A
FIELD OFFICE	: O'DRISCOLL	DATE OF LOG	: 12/13/05
DATA FROM	: -	PROBE	: 9136CH , 1244
MAG. DECL.	: -7.100	DEPTH UNITS	: FEET
LOG:	05-CNX-I-48A_12-13-05_12-11_9136CH_1 0.00 2511.90 DEVI.log		

	Casing	Casing	Hole	Cement Used	Cemented To Surface	Date
Casing Type	Size	Interval	Size	In Cubic Ft.	Yes/No	Cemented
Conductor	13 3/8	15'	16'		No	12/08/05
Surface	7"	886	8 7/8"	179.4 Cu. Ft.	Yes	12/10/05
Water Protection	4 1/2"	2292.0'	6 1/2"	354.9 Cu. Ft.	Yes	12/13/05
Coal Protection	4 1/2"	2292	6 1/2"	354.9 Cu. Ft.	Yes	12/13/05

Packers Or Bridge Plugs
Kind/Size/Set

Basket at 399' & 443'

DRILL DATA HOLE-NOAH HORN WELL DRILLING, INC

COMPANY: CNX

HOLE #: I-48A

LOCATION: WHITE MTN

DRILL RIG #: 88

DATE STARTED: 12-08-05

DATED COMPLETED: 12-13-05

ELECTRIC LOGGED: YES

GROUTED: YES

DEPTH		THICKNESS	STRATA	REMARKS
FROM	TO	FT	DESCRIPTION, VOIDS ETC	
0	15	15	OVERBURDEN	
15	30	15	SAND	
30	60	30	SAND/SHALE	
60	90	30	SAND/SHALE/COAL	
90	120	30	SAND/SHALE	
120	150	30	SAND/SHALE/COAL	
150	180	30	SAND/SHALE	
180	210	30	SAND STONE	
210	240	30	SAND STONE/COAL/SANDY SHALE	
240	270	30	SAND/SHALE	
270	300	30	SAND/SHALE/COAL	
300	330	30	SAND STONE	
330	360	30	SAND STONE/SANDY SHALE	
360	390	30	SAND/SHALE/COAL	
390	420	30	SAND/SHALE	
420	450	30	SANDY SHALE/SAND STONE	
450	480	30	SAND STONE/SANDY SHALE	
480	510	30	SANDY SHALE/COAL/SAND STONE	
510	540	30	SAND STONE/COAL/SAND STONE	
540	570	30	SAND STONE/SANDY SHALE/SAND STONE	
570	600	30	COAL/SAND STONE/SANDY SHALE	
600	630	30	SAND STONE/COAL/SANDY SHALE	
630	660	30	SAND STONE/SANDY SHALE	
660	690	30	SAND STONE/SANDY SHALE/COAL/SAND STONE	
690	750	60	SAND STONE/SANDY SHALE	
750	780	30	SAND STONE/SANDY SHALE/SAND STONE	
780	810	30	SANDY SHALE/SAND STONE	
810	840	30	SAND STONE STR/SANDY SHALE/COAL/SAND STONE	
840	870	30	SANDY SHALE/COAL/SANDY SHALE	
870	900	30	SAND STONE/SANDY SHALE/SAND STONE	
900	915	15	SAND STONE	
915	930	15	SAND/SANDY SHALE	
930	960	30	SAND/SHALE	
960	990	30	SANDY SHALE/SAND STONE STR	
990	1020	30	SAND STONE/COAL/SANDY SHALE	
1020	1050	30	SANDY SHALE/COAL/SAND STONE	
1050	1080	30	SAND STONE/SANDY SHALE/COAL/SAND STONE	
1080	1110	30	SAND STONE/SANDY SHALE	
1110	1140	30	SANDY SHALE/SAND STONE	

1140	1170	30	SANDY SHALE/COAL/SAND STONE
1170	1200	30	SANDY SHALE/COAL/SANDY SHALE
1200	1230	30	SANDY SHALE/SAND STONE/SANDY SHALE
1230	1260	30	SANDY SHALE/COAL/SAND STONE
1260	1290	30	SAND STONE/SANDY SHALE STR
1290	1320	30	SANDY SHALE STR /COAL /SANDY SHALE/SAND STONE/SANDY SHALE STR
1320	1350	30	SANDY SHALE/SAND STONE/COAL/SANDY SHALE
1350	1380	30	SANDY SHALE/COAL/SAND STONE
1380	1410	30	SANDY SHALE/SAND STONE
1410	1440	30	SAND STONE/COAL/SANDY SHALE
1440	1470	30	SANDY SHALE/SAND STONE/SANDY SHALE
1470	1500	30	SANDY SHALE/COAL/SAND STONE
1500	1530	30	SAND STONE/SANDY SHALE/COAL/SANDY SHALE
1530	1560	30	SANDY SHALE/SAND STONE/COAL/SAND STONE
1560	1590	30	SANDY SHALE/COAL/SAND STONE
1590	1620	30	SAND STONE/SANDY SHALE
1620	1650	30	SANDY SHALE/SAND STONE
1650	1680	30	SAND STONE/SANDY SHALE STR
1680	1710	30	SAND STONE/SANDY SHALE/SAND STONE
1710	1740	30	SANDY SHALE/COAL/SANDY SHALE/SAND STONE STRKS
1740	1770	30	SANDY SHALE/COAL/SAND STONE
1770	1805	35	SANDY SHALE/SAND STONE
1805	1835	30	SAND STONE/SANDY SHALE/COAL/SANDY SHALE/SAND STONE
1835	1865	30	SAND STONE/SANDY SHALE/COAL/SANDY SHALE/SAND STONE
1865	1955	90	SAND STONE/SANDY SHALE STR
1955	1985	30	SAND/SHALE
1985	2015	30	COAL/SANDY SHALE/COAL/SAND STONE
2015	2045	30	SANDY SHALE/COAL
2045	2075	30	SAND/SHALE/COAL
2075	2105	30	SANDY SHALE/COAL
2105	2135	30	SAND/SHALE/COAL
2135	2165	30	SANDY SHALE/COAL
2165	2195	30	SAND/SHALE
2195	2213	18	SANDY SHALE
2213	2217	4	P-3
2217	2225	8	SANDY SHALE
2225	2315	90	SAND/SHALE
2315	2345	30	SANDY SHALE/COAL
2345	2375	30	SAND/SHALE
2375	2405	30	SANDY SHALE/COAL
2405	2435	30	SAND/SHALE
2435	2465	30	SANDY SHALE
2465	2495	30	SAND/SHALE
2495	2510	15	SAND/SHALE

2510.00 FT. TOTAL DEPTH
15.00 FT. OF 13 3/8" CASING
886.00 FT. OF 7" CASING
2292.00 FT. OF 4 1/2" CASING