

August 18, 1982

MEMORANDUM

TO: L. A. Register, NCGWS

FROM: C. W. Hoffman, NCGSS

SUBJECT: WAY-T-2-82, Saulston Station Well

Herewith is the lithologic description of the subject well. Contrary to our first observation caving is still a large problem in the samples.

CWH/jcl

DESCRIPTIVE LOG

COUNTY: Wayne

LOCATION: 352812 Lat 775103 Long

WELL CODE (NCGS): WAY-T-2-82

ELEVATION (msl) 100 ft.

WELL CODE (NCDGW): 0-31,i-2(x)

TOTAL DEPTH 217 ft.

TYPE OF SAMPLE: cuttings

LITHOLOGY BY: B. Hoffman

PALEONTOLOGY BY: P.M. Brown

COMMENTS: Mixing of cuttings was severe in this well--in some samples only a few % of the grains were representative of the interval - correlated to GR-P-4 and WAY-P-9

DATE: 8/16/82

PAGE 1 OF 2

DEPTH(ft)	LITHOLOGY	AGE	UNIT	FAUNA
0-5	<u>Sst</u> : pinksh gry (5 YR 8/1); m-cse gr, ang, mod wl srt qtz w/mnr fspr; qtz Fe-stn com	undifferen ciated Holo/ Pleistocene deposits	unnamed	none
5-10	<u>Sst</u> : grysh or (10 YR 7/4); m-cse gr, ang-sbang, poorly srt qtz w/mnr fspr, r tour and mic; qtz Fe-stn com	aa	aa	aa
10-15	<u>Sst</u> : pale yelsh brn (10 YR 6/2); fn gr, sbang, w/srt qtz w/mnr fspr; appr 20% lt gry (N6) sltst frags	aa	aa	aa
15-28	<u>Sst</u> : H olive gry (5Y 5/2); blk-gry, grv sized, pol, rnd phos and m-cse gr, ang-sbang, poorly srt qtz w/com fspr, mnr lig and pyr/marc and r rose qtz	aa	aa	aa
28-30	<u>Cl</u> : olive blk (5Y 2/1)	Upper Cretaceous	Unit "C"	aa
30-35	<u>Sst</u> : olive blk (5Y 2/1); fn-mgr, ang-sbang, mod wl srt qtz w/abt lig, pyr/marc, and mic; com agg of qtz-mic-pyr/marc; r ama and amber			
35-43	<u>Cl</u> : olive blk (5Y 2/1)	Upper Cretaceous	Unit "C"	none
43-70	<u>Cl/Sst/Slstst</u> : blk (5Y 2/1); interbedded cl, sd, and slt; fn-mgr, sbang, mod w/srt qtz; lt gry (N7) sltst w/fn mic; abt lig, mic, and pyr/marc	aa	aa	aa

DESCRIPTIVE LOG (cont.)

DEPTH(ft)	LITHOLOGY	AGE	UNIT	FAUNA
70-80	<u>Cl</u> : olive gry (5Y 4/1)	aa	aa	aa
80-100	<u>Sst</u> : brnsh gry (5YR 4/1); mgr, sbang, mod w/srt qtz w/com mic, pyr/marc, and lig and tr gyp	aa	aa	aa
100-120	<u>Cl</u> : dk yelsh brn (10YR 4/2); appr 20% sd and sltst, r gyp and rose qtz	Upper Cretaceous	Unit "D"	aa
120-160	<u>Sltst</u> : dk yelsh brn (10YR 4/2), lt gry (N7); mod rdsh or (10R 6/6), and med lt gry (N6) mic sltst, abt Fe-stn on sltst and qtz sd; tr shell frags w/sid cmt and r rose qtz	aa	aa	aa
160-174	<u>Sst</u> : pale brn (5YR 5/2); cse gr, ang, mod w/srt qtz w/mnr fspr	aa	aa	aa
174-180	<u>Sltst</u> : mod rdsh brn (10R 4/6); mott rd/gry/yel/brn slt and cl w/fn qtz and mic; com Fe-stn qtz sd	Lower Cretaceous	Unit "F"	none
180-215	<u>Sltst</u> : mod gelsh brn (10YR 5/4); lim-hem stn and lt gry (N7) sltst frags; mnr sid cmt sd and chal	aa	aa	aa
215-216	<u>Xlnrx</u> : pt withd int-maf vol rx	PE or Lower Paleozoic (?)	Carolina Slate Belt	aa
216-217	<u>Basement Core</u> :	aa	aa	aa

0-5 Sst: pinkish gry (5 YR 8/1); m-cse gr, ang,
mod w/ srt gtz w/ mnr fspr; gtz Fe stn com

5-10 Sst: grysh or (10 YR 7/4); m-cse gr, ang-sbang
poorly srt gtz w/ mnr fspr, r tour and mic; gtz
Fe stn com

10-15 Sst: pale yelsh brn (10 YR 6/2); fn gr, sbang,
w/ srt gtz w/ mnr fspr; ~~mnr Fe stn~~, appx 10% cl
and 5% lt gry (N6) sltst frags

15-20 Sst: lt olive gry (5 Y 5/2); m gr, sbang,
v poorly srt gtz w/ mnr fspr and r rnd ama and gar;
gtz Fe stn com

20-25 Sst: lt olive gry (5 Y 5/2); blk-gry, grv sized,
pol, rnd ^{Phos} ~~with frags~~ and m-cse gr, ang-sbang, v
poorly srt gtz w/ com fspr, mnr pyr/marc, and
r gar and amp; gtz Fe stn com

25-30 Sst: lt olive gry (5 Y 5/2); m-cse gr, ang-sbang, poorly srt
gtz w/ com fspr, mnr lig and pyr/marc, and r rose gtz
appx 40% cl

Post Mid
UNIT "C"

30-35 Sst: olive blk (5 Y 2/1); fn-med gr, ang-sbang
mod w/ srt gtz w/ abt lig, pyr/marc and mic, com agg of gtz,
mic, pyr/marc, and r ama and amber

35-40

Cl: olive blk (5Y 2/1)

40-45

Cl: olive blk (5Y 2/1); appr 20% fn-m gr, ang-sbang, mod wl srt gtz w/ abt lig and pyr/marc, r amb and rnd dol

45-70

Cl/Sst/sltst: olive blk (5Y 2/1); thinly bedded cl, sd, and slt; fn-m gr, sb ang, mod wl srt sd gtz; lt gry (N7) sltst w/ fn mic; abt lig, mic, and pyr/marc

70-80

Cl: olive gry (5Y 4/1)

80-100

Sst: brnsh gry (5YR 4/1); mod gr, sbang, mod wl srt gtz w/ com mic, pyr/marc, and lig and tr gyp

S
D

100-110

Cl: brnsh gry (5YR 4/1); w/ appr 20% sd and sltst

110-120

Cl: dk yelsh brn (10YR 4/2); appr 20% sd and sltst; r gyp, rose gtz

120-160

sltst: dk yelsh brn (10YR 4/2) lt gry (N7), mod rdsh or (10R 6/6); and mod lt gry (N6) gtz, mic sltst; abt Fe-stn on sltst and gtz sd; tr shell frag cnt to sltst and tr rose gt

160-174 Sst: pale brn (5YR 5/2) cse gr, ang, mod w/
srt gtz w/ mnr fspr
D
F

174-180 Sltst: mod rdsh brn (10R 4/6); mott rd/gr/yel/brn
slt & cl w/ fn gtz and mica; com Fe-stn,
m-cse, sbrng, gtz, mnr fspr

180-190 Sltst: mod yelsh brn (10YR 5/4); 50% lim/hem stn
sltst frags and gtz and 50% lt gry (N7) sltst frags

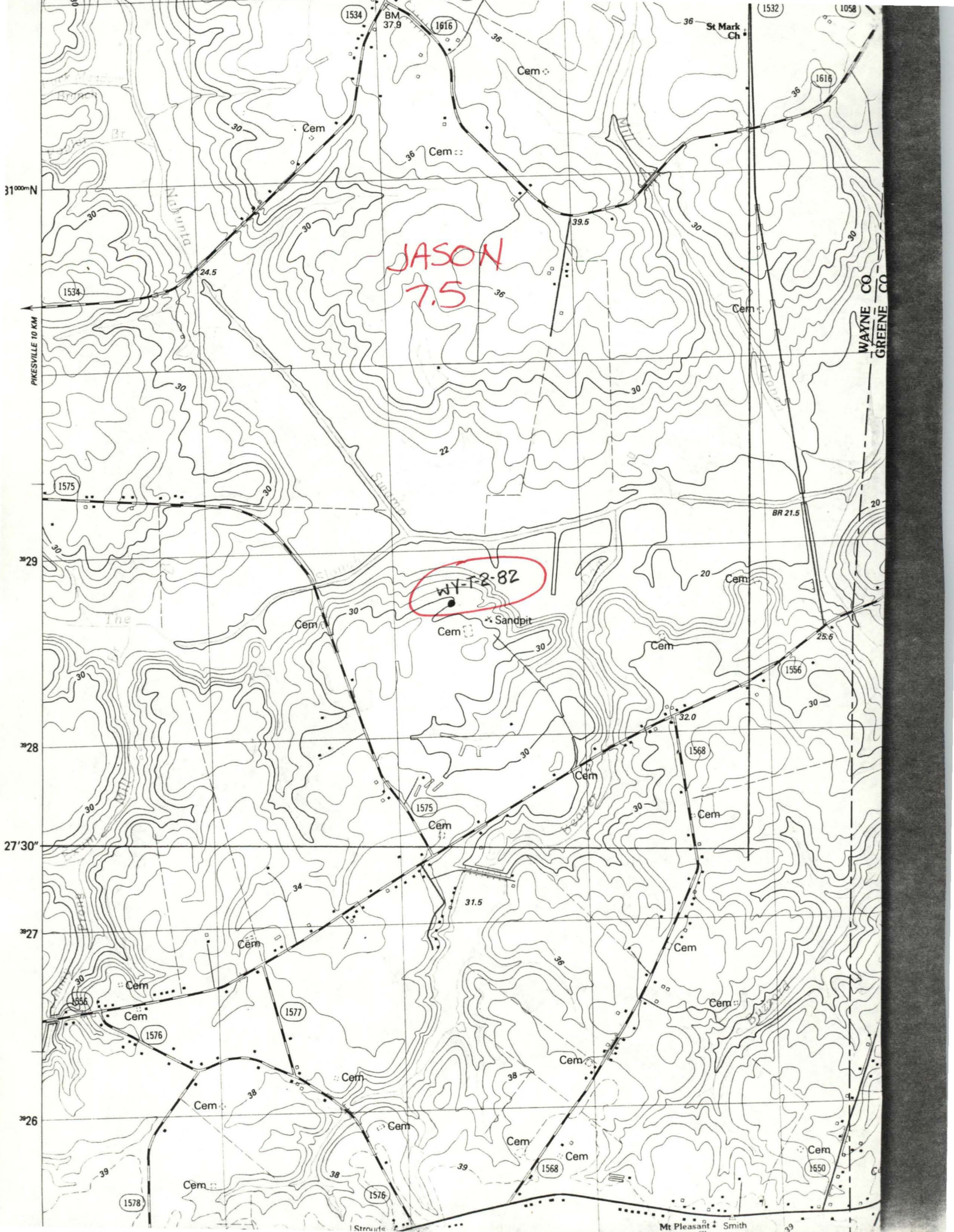
190-200 Sltst: mod yelsh brn (10YR 5/4); lim/hem stn
sltst frags & gtz

200-210 Sltst: pale yelsh brn (10YR 6/2); lt gry (N7)
sltst frags and lim/hem stn sltst frags;
mnr shl frags cmt to slt

F

210-216 Basement: ABST PT wthd INT-MAF XLN GX

216-217 Basement Core:



JASON
7.5

WY-T-2-82

PIKESVILLE 10 KM

31°00'N

29°

28°

27°30'

27°

26°

St Mark Ch

WAYNE CO
GREENE CO

BM 37.9

39.5

24.5

22

BR 21.5

25.6

32.0

31.5

38

39

1578

1576

1577

1575

1556

1568

1550

1568

1534

1616

1616

1532

1058

The

Cem

Cem

Cem

Cem

Cem

Cem

Cem

Cem

Cem

Cem

Cem

Cem

Cem

Cem

Cem

Cem

Cem

Cem

Cem

Cem

Cem

Cem

Cem

Cem

Cem

Cem

Cem

Cem

Cem

Cem

Cem

Cem

Cem

Cem

Cem

Cem

Cem

Cem

Cem

Cem

Cem

Cem

Cem

Cem

Cem

Cem

Cem

Cem

Cem

Cem

Cem

Cem

Cem

Cem

Cem

Cem

Cem

Cem

Cem

Cem

Cem

Cem

Cem

Cem

Cem

Cem

Cem

Cem

Cem

Cem

Cem

Cem

Cem

Cem

Cem

Cem

Cem

Cem

Cem

Cem

Cem

Cem

Cem

Cem

Cem

Cem

Cem

Cem

Cem

Cem

Cem

Cem

Cem

Cem

Cem

Cem

Cem

Cem

Cem

Cem

Cem

Cem

Cem

Cem

Cem

Cem

Cem

Cem

Cem

Cem

Cem

Cem

Cem

Cem

Cem

Cem

Cem

Cem

Cem

Cem

Cem

Cem

Cem

Cem

Cem

Cem

Cem

Cem

Cem

Cem

Cem

Cem

Cem

Cem

Cem

Cem

Cem

Cem

Cem

Cem

Cem

Cem

Cem

Cem

Cem

Cem

Cem

Cem

Cem

Cem

Cem

Cem

Cem

Cem

Cem

Cem

Cem

Cem

Cem

Cem

Cem

Cem

Cem

Cem

Cem

Cem

Cem

Cem

Cem

Cem

Cem

Cem

Cem

Cem

Cem

Cem

Cem

Cem

Cem

Cem

Cem

Cem

Cem

Cem

Cem

Cem

Cem

Cem

Cem

Cem

Cem

Cem

Cem

Cem

Cem

Cem

Cem

Cem

Cem

Cem

Mt Pleasant Smith