

*File Copy*

July 26, 1982

MEMORANDUM

To: L.A. Register, NCGWS

From: R.V. Smith, NCGSS *RVS*

Herewith is the descriptive log for the Sleepy Creek Station well.

RVS:cwh  
cc: P.M. Brown

DESCRIPTIVE LOG

COUNTY: Wayne

LOCATION: 351439 Lat 775748 Long

WELL CODE (NCGS): WAY-T-1-82

ELEVATION (msl) <sup>138</sup>~~160~~ ft.

WELL CODE (NCDGW): R-31,c-2

TOTAL DEPTH 329 ft.

TYPE OF SAMPLE: Cuttings

LITHOLOGY BY: R. V. Smith

PALEONTOLOGY BY: P. M. Brown

COMMENTS: Lithology correlated to WAY-p-1-64 approximately 4 mi. to the east

DATE: 7/21/82

PAGE 1 OF 2

DEPTH(ft)	LITHOLOGY	AGE	UNIT	FAUNA
0-20	<u>Sst</u> : Pale yelsh brn(10YR 6/2) to lt brn(5YR 5/6), m-cse gr, mod-poorly srt, ang-sbang qtz w/ mnr Fe stn and Fe agg, r. tourmaline and mic	Pleistocene/ Pliocene	unnamed	None
20-35	<u>Sst</u> : Olive blk(5Y 2/1) to mod yelsh brn(10YR 5/4), m-cse gr, poorly srt, ang-sbang qtz w/ com lim/Fe agg, com-mnr lig frags, marcasite/pyr, r. mic and rose qtz, and mnr cl	aa	aa	aa
35-55	<u>Sst</u> : Olive-gry(5Y 3/2), m gr, mod srt, sbang qtz w/ com lig frags, rndd amethyst, glauc, marcasite/pyr, mnr lim/Fe agg, r. mic	Upper Cretaceous	Unit "B" Black Creek Fm.	aa
55-100	<u>Sst</u> : Grysh-olive(10YR 4/2), f-cse gr, sbang, wl srt qtz w/ abd rndd amethyst and fspr, com glauc, mnr lig frags, mic, marcasite/pyr	aa	aa	aa
100-160	<u>Cl</u> : Olive-gry(5Y 3/2), w/apprx 20% f-m gr qtz, abd lig frags, marcasite/pyr, com mic and amber	Upper Cretaceous	Unit "C" (Middendorf Fm.)	aa
160-260	<u>Sst</u> : Olive-gry(5Y 3/2) to lt olive gry(5Y 5/2), m-cse gr, mod-poorly srt, ang-sbang qtz w/abd lig frags, marcasite/pyr, amber, mnr mic, fspr, and cl.	aa	aa	aa
260-300	<u>Cl</u> : Olive-gry(5Y 3/2), w/m gr qtz, abd lig frags, marcasite/pyr, Fe/lim agg, com amber, mic	Upper Cretaceous	Unit "D" (Tuscaloosa Fm.)	aa

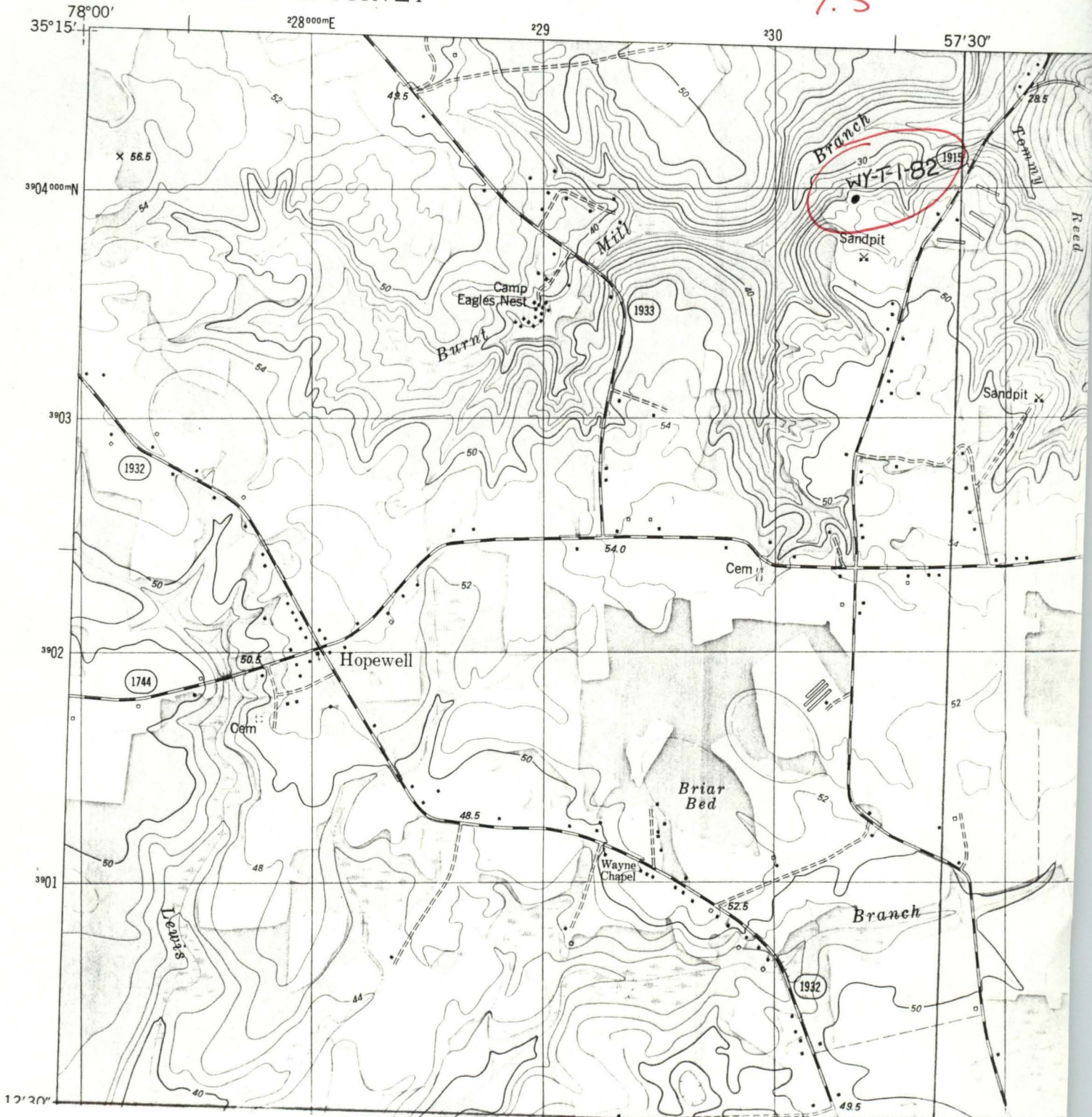
## DESCRIPTIVE LOG (cont.)

DEPTH(ft)	LITHOLOGY	AGE	UNIT	FAUNA
300-320	<u>Sst</u> : Lt olive-gry(5Y 5/2), m gr, mod srt, sbang qtz w/ mnr Fe/lim agg and mic	aa	aa	aa
320-324	<u>Basement</u> :	p6 or Lower Paleozoic(?)	Carolina Slate Belt	aa

534 1 SE  
(SOUTHWEST  
GOLDSBORO)

UNITED STATES  
DEPARTMENT OF THE INTERIOR  
GEOLOGICAL SURVEY

WILLIAMS  
7.5



WAY-T-1-82

0-5 unwashed sample only,  
Set: Lt brn (54R 5/6), m-  
gr qtz

5-10 Set: Pale yellow or (104R  
8/6, m-cce gr, sbang,  
mod bit qtz w/ mm  
Fe stn & r Fe agg.

10-15 Set: Mod yellow brn (104R  
5/4), m-cce gr, ang-sbang,  
mod bit qtz w/ mm  
Fe ~~stn~~<sup>stn</sup>, glauc?, r. tourm

15-20 Set: mod yellow brn (104R  
5/4), m-cce gr, ang-sbang  
poorly bit qtz w/ mm  
Fe stn, Fe agg, r. tourm, mic

20-25 Set, Olive blk (54 2/1),  
m-cce gr, ang, poorly bit  
w/com Fe agg, marcasite / pyrr,  
mm lig frags, rose qtz &  
appx 25% cl

25-30 Set: mod yellow Br (10YR 5/4),  
m-cce gr, ang-~~blang~~, poorly  
prt qty w/ com lim / Fe  
agg, muc rdd amethyst,  
r marcasite / pyr, Fe stn  
com

30-35 Set: mod yellow Br (10YR 5/4),  
m-cce gr, ang-~~blang~~, poorly  
prt qty w/ com lim / Fe  
agg, Fe stn, r. marcasite/  
pyr, com sh frags, muc  
lig frags, r. mic.

35-40 Set: olive-grey (5Y 3/2),  
m gr, ~~blang~~, mod  
prt qty w/ com sh  
frags, rdd amethyst,  
glanc., <sup>lig frags</sup> muc marcasite/  
pyr, lim / Fe agg, r.  
mic.

40-45 aa w/ mic sh frags &  
mic

45-50 aa, w/ r. Fe agg, decr.  
sh frags, inner marcasite/  
pyr., r. mic

50-55 aa, w/ decr lig frags

55-60 Set: Greysh-olive (10Y 4/2),  
cse gr, shang, w/ sh  
qtz, w/ abd. indd.  
amethyst, r. glauc,  
lig frags, mic

60-70 aa, w/ r. marcasite/pyr,  
abd indd pyr, mm  
sh frags

70-80 Set: Greysh-olive (10Y 4/2),  
f-m gr, shang, w/ sh  
qtz w/ com glauc,  
mm lig frags & mic

80-90 aa, w/ m gr qtz, mm  
lig frags & mic, marcasite/pyr

90-100 aa; w/ com glauc. &  
no lig frags / mic

100-110 cl: olive-grey (5Y 3/2),  
w/ approx 20% f-m gr. qty, abd  
lig frags, marcasite / pyr,  
com mic, & amber

110-120 aa, inc amber

120-130 aa, dec qty

130-140 aa

140-150 aa, w/ a Fe agg

150-160 aa

160-170 Set: olive-grey (5Y 3/2),  
m gr, ang-blank, mod mt  
qty w/ abd lig frags,  
mmr marcasite / pyr, Fe agg,  
mic



170-180 aca w/ m-cce gr qty  
& appr 10% cl

180-190 aa

190-200 aa w/ abd amber and  
mm rose qty

200-210 Set: Lt olive gray (54 5/2),  
m-cce gr, ang-stang,  
mod set qty w/ abd  
marcanite / pyr, mm  
lig frags, mic, & cl.

210-220 Set: Olive gray (54 3/2),  
m-cce gr, ang-stang,  
poorly set qty w/  
abd marcanite / pyr, lig  
frags, amber, frags,  
mm mic & 5-10%  
cl.

220-230 Set: Lt olive gray (54 5/2),  
cce gr, ang, poorly set qty  
w/ abd marcanite / pyr,  
com lig frags, mm  
mic. & cl

230-240 aa w/ approx 30-40% cl.,  
abd lig frags

240-250 Set: Lt olive gray (5Y 5/2),  
cns gr, cng, mod mt  
gty w/ com frags,  
mmc malacite / pyrr,  
mic, lig frags

250-260 aa

260-270 Cl: olive gray (5Y 5/2),  
w/ m gr gty, abd  
lig frags, malacite / pyrr,  
Fe / lim aggr, com  
~~amber~~, mic.

270-280 aa

280-290 aa w/ minor gty

290-300 aa w/ approx 40% gty

300-310 Set: Lt olive grey (54 5/2),  
m qz, vlsang, ~~see~~ small  
etc gtz w/ mm  
Fe / lim agg & mic

310-320 aa w/ con cherty?  
particles

320-324 Basement frags -  
schistose appearing