

P. 1/2  
Lithology  
(described while drilling)

Footage

Drilling Time  
Drilling Remarks

6-8-83  
Lithology  
(described from pulled flights)  
SAM-A-1-83  
7833.50  
3513.43 elev.  
198'

greyish brown sand appears to be top soil	5	less than 1/2 min	easy	NO Geophysical Log
tan wet sand	10	1/2 min	easy	X
tan sand <del>sample</del>	15	1/2 min	easy	X
sand soup - little sample	20	1/2 min	easy	✓
sand soup light tan	25	1/2 min	easy	X
no sample	30	1/2 min	easy	X
light orange sand ✓	35	1 min	drilling harder & chatter	X } slight amount of tough brownish grey clay on rim no sample
no-sample	40	3/4 min	easy	X } slight amount of tough brownish grey clay on rim - not enough to sample
light orange sand soup (thick) ✓	45	1 1/2 min	drilling harder whole interval	X } same as above small sample
light orange sand soup (thick)	50	1 1/2 min	drilling as above	X } orangish sandy clay sample not enough to sample
color change brownish tan sand soup Finer sand than above	55	1 1/2 min	"	X } brownish grey clay and not on up + orangish sandy streaks - sample

Lithology (described while drilling)	Footage	Drilling Time	Drilling Remarks	Lithology (described from pulled flights)
fine brownish tan sand & silt (clay?) soup	60	1 1/2 min	" (as above) slight chatter	greenish blue sandy clay & clayey sand - sample thick on flight (full) ✓
fine brown tan sand & silt soup	65	5 min	drill slowed drill speeded up	Same as above - sample thick on flight (full) ✓
grayish brown silt and clay with some sand	70	1 min	same "	same as above - sample yellow sand streaks thick on flight (full) ✓
same	75	1 min	same	same as above without yellow thick on flight sample ✓
same	80	1 min	same	fine to med sandy clay greenish blue sample flight less than half full ✓
same	85	1 min	same	med. sandy clay greenish blue with more greenish mottles in middle of flight flight half full sample ✓
same small sand clots	90	1 min	same ← drill real fast	med - sandy clay blueish gray sample flight half full ✓
same small sand clots	95	1 1/2 min	drill real fast	sample - same as last sample above flight less than 1/2 full ✓
same small sand clots	100	1/2 min	"	same material but little of it no sample
same no sample	105	1/2 min	"	sample just above bit sandy granular blue gray clay ✓



Sample: 44H-2

County: Haywood

Location: Cove Creek Gap 7 1/2' Quad. N.C. Coordinates 744,700N, 806,350  
Roadcut on East side of I-40 approximately 2000' <sup>south</sup> of the  
Cold Springs road, ~~at its eastern end~~

Description: High roadcut with two benches. Sample taken at top  
of 2nd bench <sup>at its eastern end</sup> where some saprolite has developed. ~~the~~ <sup>This upper</sup> bench is  
0' to 30' high and 200' long. Taken ~~at eastern end.~~

Formation: Wading Branch Formation Sampled Interval: 3 Grab samples  
(Hadley and Collier, 1923)

Type Material: Residual Clay - Color: Moderate Reddish brown  
saprolite (10K 4/6)

Unfired Properties:

Fired Properties:

<u>Temp. °F</u>	<u>Color</u>	<u>Moh's Hardness</u>	<u>Shrinkage Total %</u>	<u>Absorption %</u>	<u>Apparent Porosity %</u>	<u>Bulk Dens. gm/cc</u>
1800						
1900						
2000						
2100						
2200						
2300						

Bloating Test:

Other Tests & Remarks:

Potential Use:

SAM-A-1

In this hole you go directly from surficials to Unit F  
at about 40 feet - there may have been a small amount  
of "Black Creek" at 38 feet but cannot be certain.

~~77-A-1~~ SAM-A-1-83  
Drilled 6-8-83



# North Carolina Department of Natural Resources & Community Development

James B. Hunt, Jr., Governor

Joseph W. Grimsley, Secretary

DIVISION OF  
LAND RESOURCES  
*not logged*  
Stephen G. Conrad, Director

Telephone 919 733-3833

Dear James E. Nair Jr. :

The North Carolina Geological Survey Section, Department of Natural Resources and Community Development is drilling a number of shallow auger holes in order to gather information about geologic structure and rock type. This information will be used to construct a new State Geologic Map. One or more desirable sites for auger holes are located either within the highway easement across your property or on your property as indicated on the attached sketch map.

Geological Survey personnel would be drilling 6-inch diameter auger holes not more than 105 feet deep with a truck mounted auger rig and accompanying service truck. In some instances geophysical equipment would be lowered down the hole to gather part of the necessary information. When finished all equipment, material, and structures will be removed, cuttings scattered, and the holes permanently plugged in accordance with state regulations. All work will take from less than one day to not more than one or two days, depending on how many holes we are requesting to drill on your right-of-way or your property.

Please indicate your permission for us to do this work by signing and returning this letter to us.

Respectfully,

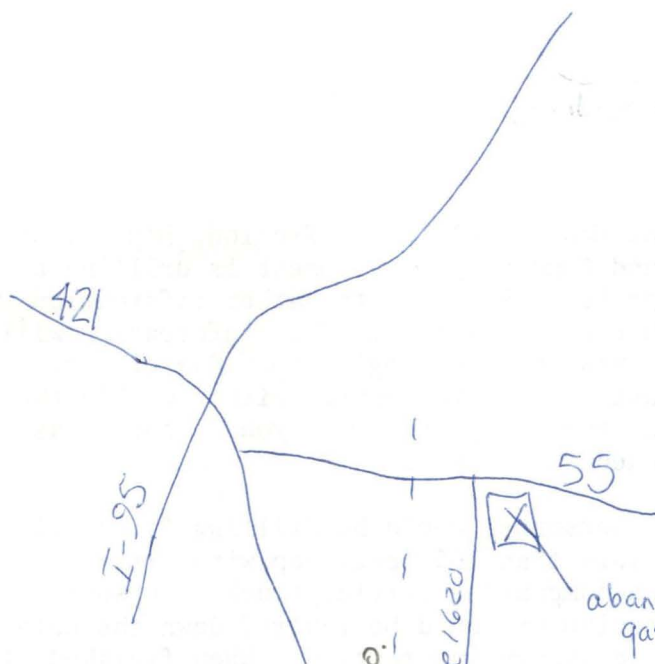
Rebecca M. Enos  
Driller-in-Charge

James E. Nair Jr.  
Land Owner (or)  
Person in charge of the land

6-1-83  
Date

E8-1-A-1111 1-4-11

# Sampson County



( 351743  
783350 )

EL = 198

TD = 105

NO LOGS

HARNETT CO.  
SAMPSON CO.

SR 1620

Sampson  
County Line