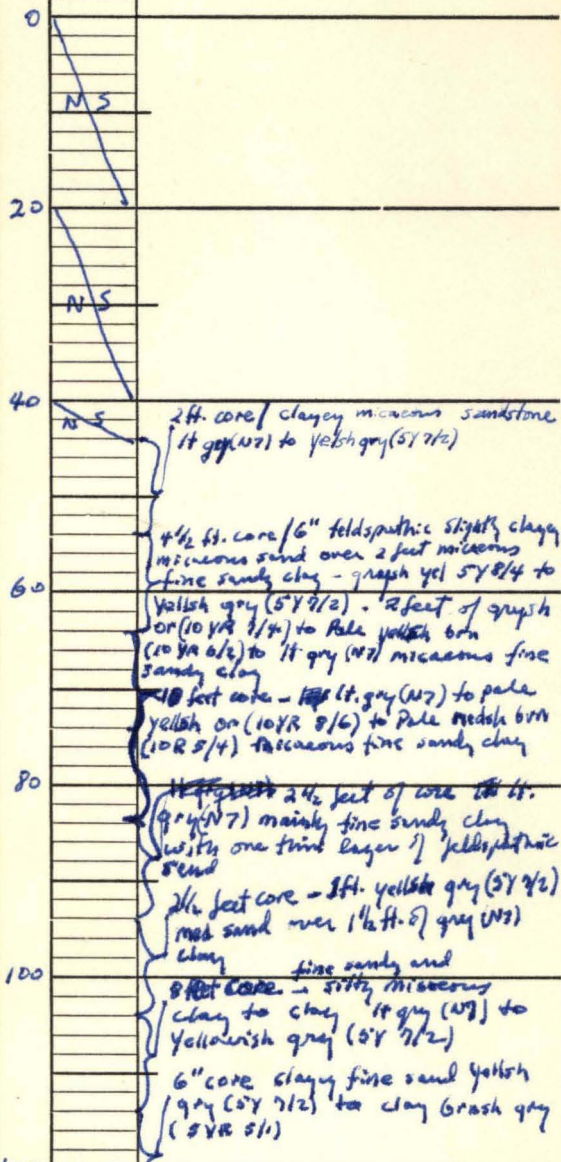


CORE DESCRIPTION one of
 several wells at S. Rowland School
 see RO-T-3-71 or
 RO-T-7-71



NS

NS

NS

2 ft. core / clayey micaceous sandstone
 lt gray (N7) to yellowish gray (5Y 7/2)

4 1/2 ft. core / 6" feldspathic slightly clayey
 micaceous sand over 2 feet micaceous
 fine sandy clay - gray yel 5Y 8/4 to
 yellowish gray (5Y 7/2) - 2 feet of gray
 or (10YR 7/4) to pale yellowish brown
 (10YR 6/2) to lt gray (N7) micaceous fine
 sandy clay

10 feet core - ~~10~~ lt. gray (N7) to pale
 yellowish brown (10YR 8/6) to pale reddish brown
 (10R 5/4) fascaceous fine sandy clay

~~11 1/2 feet~~ 2 1/2 feet of core 11 ft.
 gray (N7) mainly fine sandy clay
 with one thin layer of feldspathic
 sand

2 1/2 feet core - 1 ft. yellowish gray (5Y 7/2)
 med sand over 1 1/2 ft. of gray (N7)
 clay

8 feet core - fine sandy and
 silty micaceous
 clay to clay lt gray (N7) to
 yellowish gray (5Y 7/2)

6" core clayey fine sand yellowish
 gray (5Y 7/2) to clay brash gray
 (5YR 5/1)

120

120

140

160

180

N S

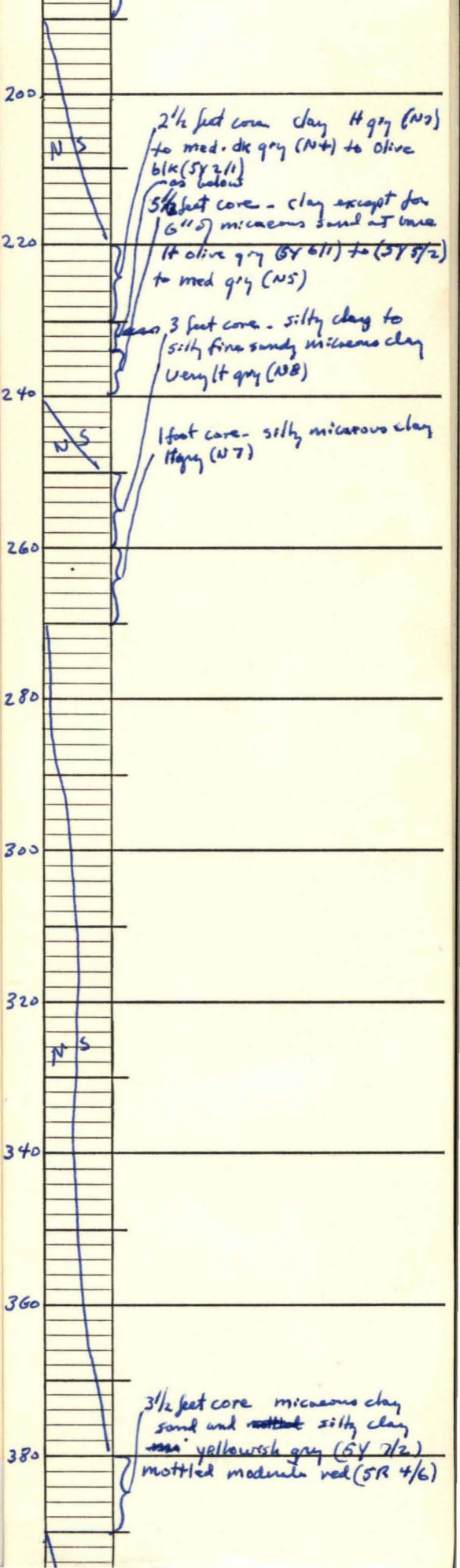
N S

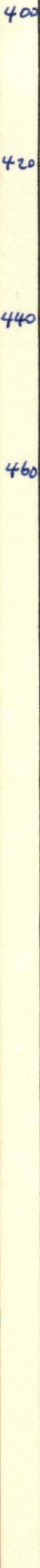
16" core micaceous clay
Med lt gray (N6) to Med gray (N5)

5 1/2 feet core as above

2 1/2 feet core as above except
some layers sandy - some
organic remains - some suggestion
of layering with more micaeous or
sandy (thin) layers

2 1/2 feet core - as above





N5

6 1/2 feet core micaceous clayey
sand to clay pale yellowish brown
(10YR 6/2) to yellowish gray (5Y 2/2)
mottled moderate (5R 4/6)

SAMPLE DESCRIPTION

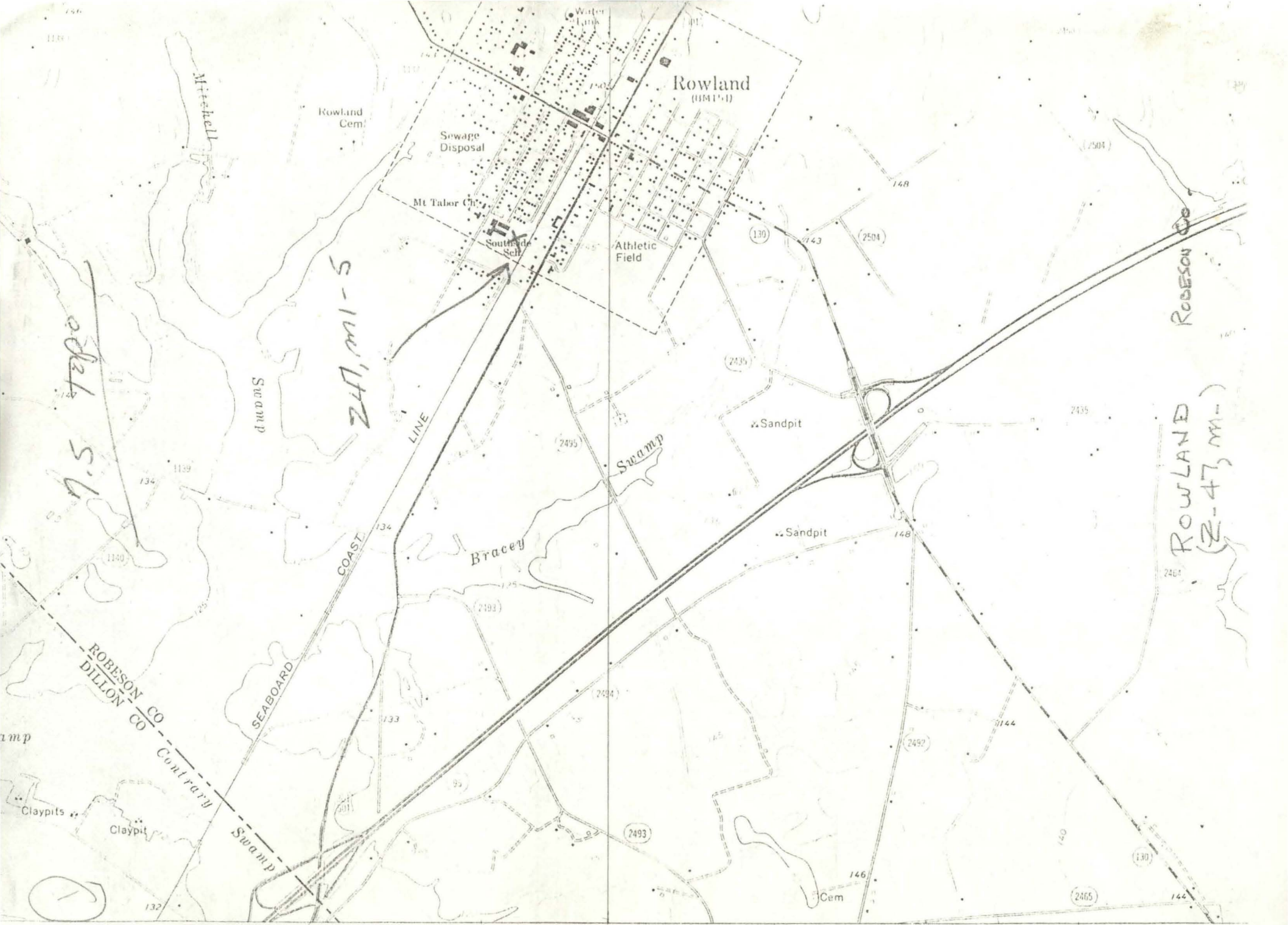
Well # RD-T-3-71 TD 550 Examined by: S/RB Date 12/13/83

p. _____ of _____

Key: A - Abundant C - Common M - Minor T - Trace R - Rare X - Major Constituent

Interval	Rock Type	Color	Texture			Quartz	Feldspar	Glauconite	Phosphate	Calcite	Shell Frags	Mica	Pyrite	Limonite	Chalcedony	Amethyst	Rose Quartz	Tourmaline	Siderite	Limestone	Dolomite	M. Fossils	Re-Stain	Hematite, Limonite	Remarks	
			Grain Size	Grain Shape	Sorting																					
0/10			CRS	A/SA	A										R										relat. bet, clean sand	
20/30			CRS/fg	A/SA	A										R										T 1/2	
40/50			CRS	A/SA	A										T										T 1/2	
50/60			CRS	A/SA	A	R									R										R 1/2	
70/80			CRS	A/SA	A	T									T										R 1/2	
80/90			CRS	A	A	T/R				R					T										R 1/2	
120/130			F	A	A	R	R ?			R/T					T											
140/150			CRS	A/SA	A	T									T											light gray clay fragments Trace
160/170			fg	SA	A	T/R									R											med gray clay fragments Rare
170/190			M/CRS	A/SA	A	R				R	R	R														med gray-dark gray clay fragments minor
200/210			fg	SA	A										R											
430/440			CRS	A/SA	A	R				R					T											H/L R
440/450			CRS	A/SA	A	T				R					T											T
470/480			M	SA/A	A	T									T											H/R
540/550			Biomass fragments																							gray to greenish gray clay fragments common chalcocite, or Hematite

circumvented
in the
Black creek
clay



(DILLON EAST)
5152 IV NE
SCALE 1:24 000

1 MILE

2 520 000 FEET (S. C.)

ROAD CLASSIFICATION

659 INTERIOR GEOLOGICAL SURVEY, RESTON, VIRG. EASTMONT TO M 660