

COUNTY Pitt

WELL CODE PT-T-1-82 TD _____ DATUM _____

INTERVAL REPRESENTED	SAMPLE PRESENT	DESCRIPTION OF INTERVAL
First sample 152' - 162'	3' 8"	Pale to medium grey clay and silty clay. ~ 1% mica - black films of carbonized plant remains are common. In the lower 7" of this section, 1-2mm. diameter burrows and rootlets are common. Orange oxidation surrounds many rootlets.
162' - 170'	5' 1"	medium grey clay, TR. mica and very rare TR. silt. - carbonized plant remains and rootlets are present, but less common than above. A 10" part of this interval contains heavy red staining.
170' - ~ 175'	1' 3"	medium grey clay, TR. mica, carbonized rootlets present, TR. red-stained clay
175' - 180'	2' 3"	medium grey clay, TR. mica. except as follows 7"-8" below top of interval is a black slightly micaceous clay. Lowermost 2 1/2" of interval contains VC-FG sand many of the VC-C grains are subrounded
180' - 190'	3' 7"	Pale grey siltstone with intervals of very fine-grained sandstone and slightly silty clay, TR. mica throughout, carbonized fgms present.
190' - 200'	1' 6"	pale grey slightly silty clay, TR. mica, localized red and orange staining
200' - 204.5'	2' 7"	mostly pale grey siltstone and clay with common red staining, TR. mica. bottom 6" of interval is a very fine grained light grey sandstone with a few isolated coarse grains
204.5' - 210'	2' 7"	very fine to coarse grained very silty sandstone. - predominantly fine to very fine grained. localized red staining + very rare rootlet fossils.
210 - 220	7' 4"	upper 17" of interval medium grey clay. commonly stained red, TR. SD; remainder of interval pale grey sandstone, very fine to coarse grained - predom. fine + medium grained. - seems to be fining-upward trend in this interval. - also, TR. mica throughout

COUNTY PittWELL CODE T-1-82

TD _____

DATUM _____

INTERVAL REPRESENTED	SAMPLE PRESENT	DESCRIPTION OF INTERVAL
220'-230'	2' 11"	Upper 19" of interval - medium grey silty clay next 15" of interval - fine grained silty sandstone remainder of interval - medium grey slightly micaceous clay
230'-232.5'	2' 3"	pale grey silty clay, siltstone, and very fine grained sandstone. - red stained intervals are present.
232.5'-235'	1' 9"	medium grey slightly silty clay; Lignite twigs present also TR. mica.
235'-236.5'	0' 11"	pale grey silty clay to sandy siltstone. Lignite present.
236.5'-240'	2' 7"	upper 2' - pale grey silty clay lower 7" - pale grey siltstone
240'-245'	1' 10"	pale grey sandy to silty clay. - upper 5" of interval contains coarse to very coarse grained sand, + few pebbles. - remainder of interval mostly silty clay, oxidized rootlet traces common
245'-250'	1' 10"	pale grey silty micaceous clay grades downward to a very fine grained sandstone. - oxidized rootlets present.
250'-252.5'	1' 4"	pale grey silty clay, FR. mica.
252.5'-255'	1' 7"	Light grey slightly silty clay, TR. lignite + mica.
255'-256.5'	8"	medium grey slightly silty clay - oxidized rootlets are common.
256.5'-258'	9"	medium grey silty clay
258'-260'	1' 2"	silty grey clay - mostly stained red.
260'-270'	no sample	
270'-280'	5"	grey sandy clay, FR. Lignite
280'-283'	1' 1"	Light grey sandy clay with some black to dark grey contrasting, somewhat mottled beddings
283'-287'	2' 1"	mostly silty sandstone, lt grey with dk grey to black interbeds, - mostly sandy overall, with a 5" thick black micaceous clay in middle of interval.

COUNTY PittWELL CODE T-1-82

TD _____

DATUM _____

INTERVAL REPRESENTED	SAMPLE PRESENT	DESCRIPTION OF INTERVAL
287'-290'	1'6"	Fine grained sandstone with thin black silty clay interbeds
290'-300'	9"	coarse to fine grained sandstone with interbedded medium grey clay.
300'-315'	no samples	
315'-317'	2'	medium greyish silty + clayey sandstone, medium- to fine-grained, Tr. pebbles,
317'-320'	no samples	
320'-330'	1'10"	Brownish grey coarse-grained sandstone - upper 2" of interval - Red orange stained grey sandstone, medium- to fine grained. - middle 24" - medium grey lignite laminated clay to silty clay - lower 6" - lignite sandstone, m. fine grained, Tr very coarse grains. (overall, part of fining up interval)
330'-340'	2'8"	
340'-350'	2'6"	- upper 20" of interval - medium to ^{very} coarse grained sandstone with clay and lignite intraclasts. - middle 6" of interval - brownish grey conglomerate, comprised of 2-4 mm pebbles. - lower 4" of interval - 2-10mm pebbles, predominant
350'-360'	2'1"	- upper 14" - very coarse grained sandstone (1-2mm grains) - grey to yellowish - - middle 9" - mixed interval with sandstone, grey clay, and lignite - lower 2" - very coarse grained sandstone, Tr pebbles and lignite
360'-365'	10"	coarse grained sandstone, black clay + lignite. (Likely sand is reworked from overlying sand into this lignite clay via bioturbation)
365'-370'	1'10"	Silty coarse grained sandstone with red, orange, dark grey and pale grey clay intraclasts.

COUNTY PittWELL CODE T-1-82

TD _____

DATUM _____

INTERVAL REPRESENTED	SAMPLE PRESENT	DESCRIPTION OF INTERVAL
370'-380'	3 baggies 1 of 3 2 of 3 3 of 3	1-3 mm pebbles - subangular to subrounded. 2-10 mm pebbles - subrounded to subangular, white feldspar present, poorly sorted coarse to very coarse grained sandstone
380'-390'	1'	mixed - pebbly coarse grained sandstone + white "chalky clay" + dark grey lignitic clay.
390'-400'	1 baggie	coarse to very coarse grained sand, predom. grey quartz, mostly subangular.
Splits from sample @ 400'	6"	coarse grained slightly pebbly sandstone with chalky white cement. (pebbles are rounded quartz, and one white feldspar chunk)
400'-410'	1'10"	coarse grained sandstone, silty, with one 2 1/2" clay interval.; lower 10" ? altered chalky cement, - white + chalky on outside of core, - very silty + feldspathic yellowish sand on inside.
410'-420'	1'11"	upper 15" light brownish grey clay with some sand and clay intra clasts. middle 5" white siltstone Lower 3" dk grey clay with coarse grained sand, and clay intra clasts.
420'-423'	1'3"	medium grey clay
423'-428'	1'4"	medium grey clay - abundant red staining.
428'-430'	1'3"	LAA
430'-435'	9"	sandy medium to dk grey clay + ^{red,} orange and black clay intra clasts, + pebbles
435'-440'	1'2"	LAA with coarse sand concentrated in lower 1/2"
440'-441'2"	1'2"	slightly sandy medium grey clay.
441'2"-442'3"	1'1"	slightly sandy medium grey clay - staining is common
442'3"-443'7"	1'4"	silty to sandy + micaceous medium grey clay.
443'7"-445'	1'4"	light grey micaceous sandstone, fine to very fine-grained.

COUNTY Pitt

WELL CODE T-1-82

TD _____

DATUM _____

INTERVAL REPRESENTED	SAMPLE PRESENT	DESCRIPTION OF INTERVAL
445'-447'	1'4"	medium grey silty clay to very fine grained sandstone, with abundant red staining. -TR. mica throughout.
447'-448.5'	1'5"	LAA.
448.5'-450'	1'3"	medium grey clay and slightly silty clay
450'-452'	1'6"	white siltstone
452'-453.5'	2'	pale grey silty clay to silty sandstone, very fine grained with abundant red staining.
453.5'-455'	1'3"	pale grey silty clay with abundant red staining
455'-456'2"	1'3"	Light grey slightly silty clay
456'2"-456'4"	2"	LAA
456'4"-457'6"	1'2"	pale grey siltstone.
457'6"-458'7"	1'1"	Light grey silty clay and siltstone
458'7"-460'	1'3"	Light grey siltstone.
460'-470'	no samples	
470'-472'6"	1'4"	pale grey clay and silty clay
472'6"-475'	1'5"	pale grey clay to slightly silty clay
475'-477'6"	2'6"	Light grey clay
477'6"-478'2"	1'2"	Light grey clay
478'2"-479'	9"	Light grey clay
479'-480'	1'3"	medium-dark grey clay + TR. hematite,

Possible error in labeling depth intervals.

MEMO.

DATE: 8/28/84

TO: FILES

SUBJECT: PI-T-1-82

DATE LOGGED: 1/16/82

77 3243
35 3304

DRILLER: LAYNE-ATLANTIC

ELEV. = 78'

CORE 152/480

E Log w/ some cored intervals noted.

Cored using a 10' coring device, sands washed out, clay stuck.

Drilling fluid - Bentonite *

McDAVID & Associates
FARMVILLE

* PER conversation w/ VAN LEWIS 8/29/84



North Carolina Department of Natural Resources & Community Development

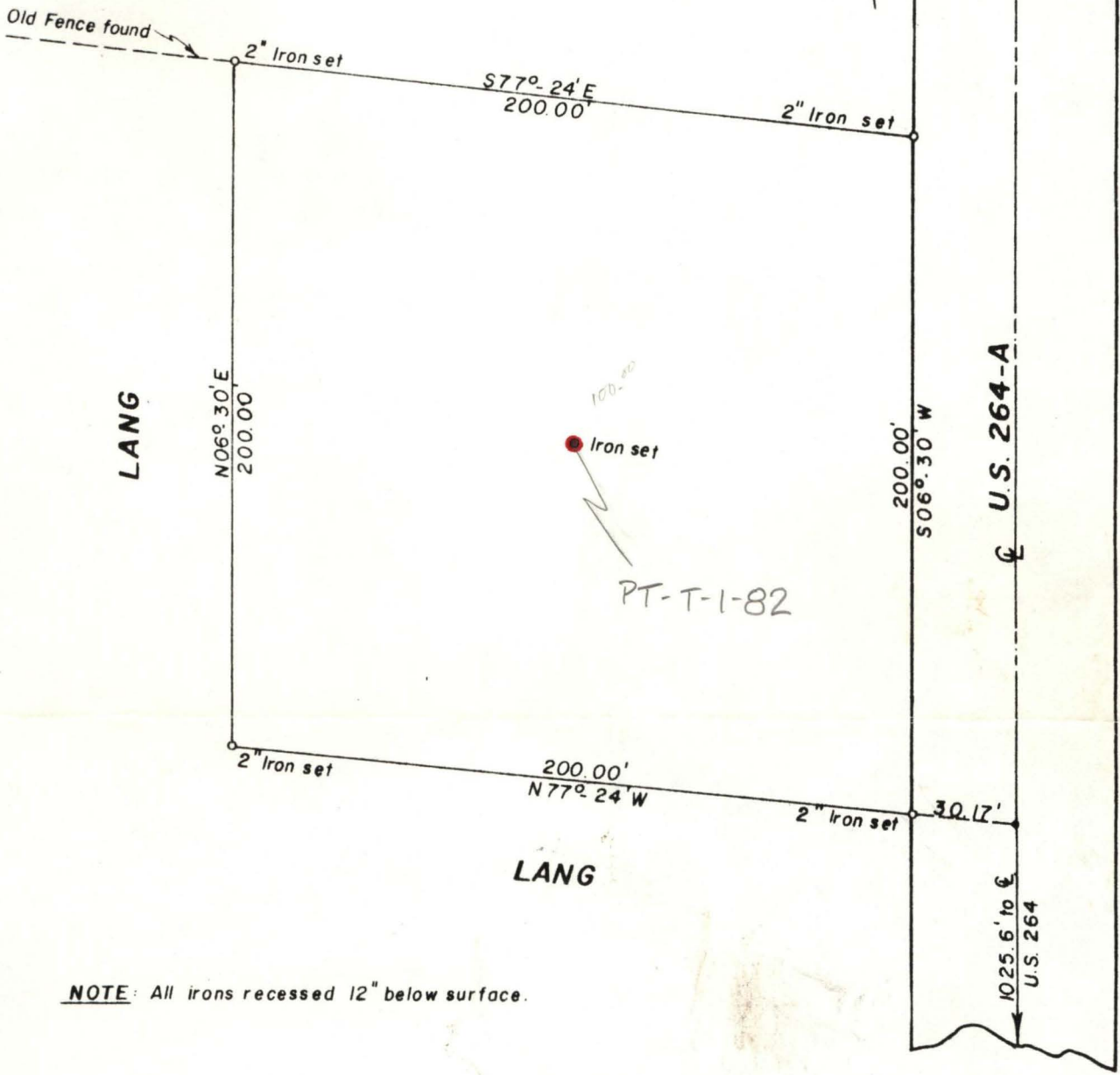
(A)

PI-T-1-82

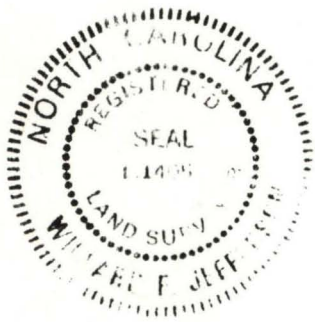
Van Lewis



TURNAGE PROPERTY
Map Book 3, Page 157



NOTE: All irons recessed 12" below surface.



USGS
Mike Winter
well #13

SURVEY FOR
TOWN OF FARMVILLE

PROPOSED WELL LOT

Farmville Township, Pitt County, N. C.
October 8, 1980

Scale: 1" = 50'

(VAN LEWIS)

McDAVID ASSOCIATES, INC.

ENGINEERS • PLANNERS • LAND SURVEYORS

FARMVILLE, N. C.

I CERTIFY -

THAT THIS SURVEY WAS
MADE BY SIMON COX
UNDER MY SUPERVISION AND
DIRECTION AND IS TRUE TO
THE BEST OF MY KNOWLEDGE
AND BELIEF.

Willard F. Jefferson, N.C. R.L.S. L-1405