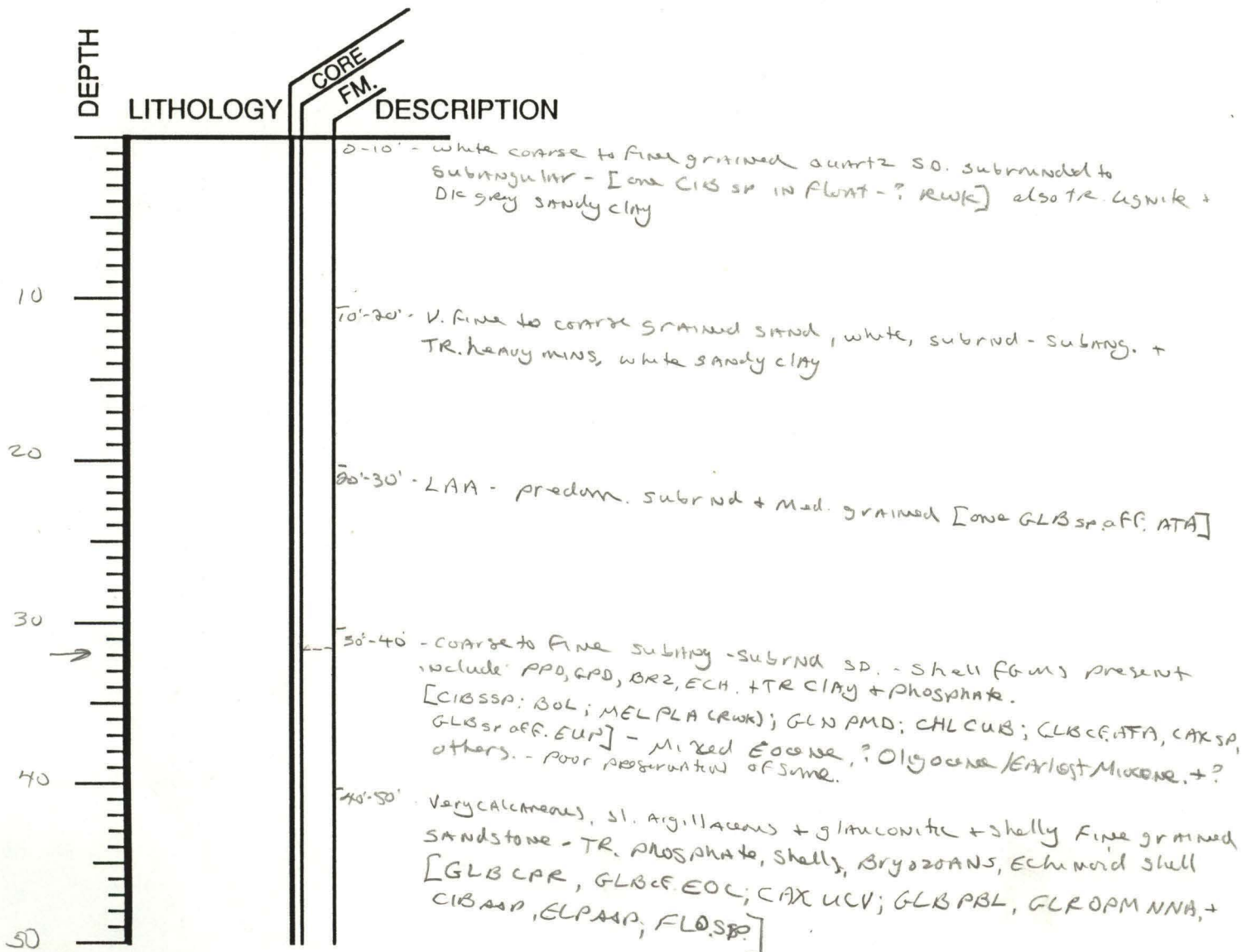


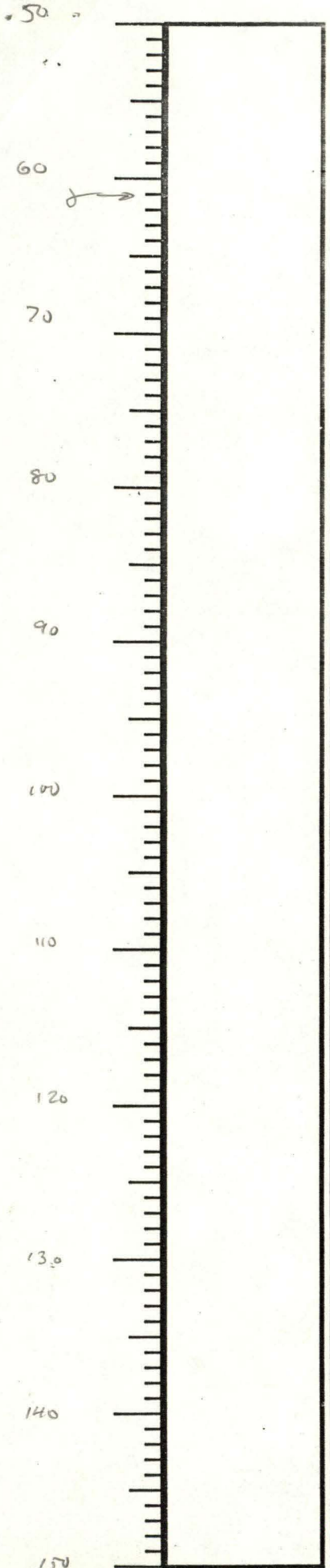
WELL CODE: PE-T-3-84

NOTES:

ELEVATION: 32'

TD: 250'





50-60 LAA, FA

60-70 Dense med. grey sandy (slightly) miclic LS. - spring garden lith. + TRSHC [SIB/LNA]

70-80 LAA

80-90 LAA

90-100 LAA - color is very pale grey to off-white

CASTLE HAYNE

100-110' LAA

110-120 LAA

120-130 LAA - color is white - [Fossils present in flut - all very small]

130-140 LAA

140'-150' LAA

150
 160
 170
 180
 190
 200
 210
 220
 230
 240
 250

- 150-160 - LAA + N2% slightly glauconitic LS.
 + TR dense med grey moldic LS (? CVD)
- 160-170 LAA - (Actual lith may be masked by excess cement
 Lith - see ♂ Log) [MOZ AEG - late paleocene]
- 170-180 LAA + TR very argillaceous fine-very fine grained soft sandstone
 + sm % fine sand. note - foraminifera are
 abundant in fine fraction of float residue.
- 180-190 Mixed: fine grained sandstone; fine sr. argill. sandstone,
 glauconitic calc. ss + LS + abund. CVD lith. + TR
 phosphate. Also abund. very fine to med. angular sd.
- 190-200 white coarse to very fine (Aradum med - v. fine) subangular
 sand + TK glauc. phos, CVD lith.
- 200-210 sand as above + 30% cement limestone fragments from
 castle Hayne
- 210-220 LAA ± only 1% CVD LS. [HHX STR (K) + Gum CRT (V)]
- 220-230 LAA, FAA
- 230-240 pale grey med - coarse subind - subang SD +
 TR. grey sl. stony moldic LS + TR oys. SHL.
- 240-250 LAA

IT

Beaker +

see see

PE-T-3-84

PE-T-2-84

- 0 - 140' No fauna
140' - 150' Castle Hayne, few forams
230' - 240' One Unit A foram

Remarks: See above (PE-T-1-85)

PE-T-3-84

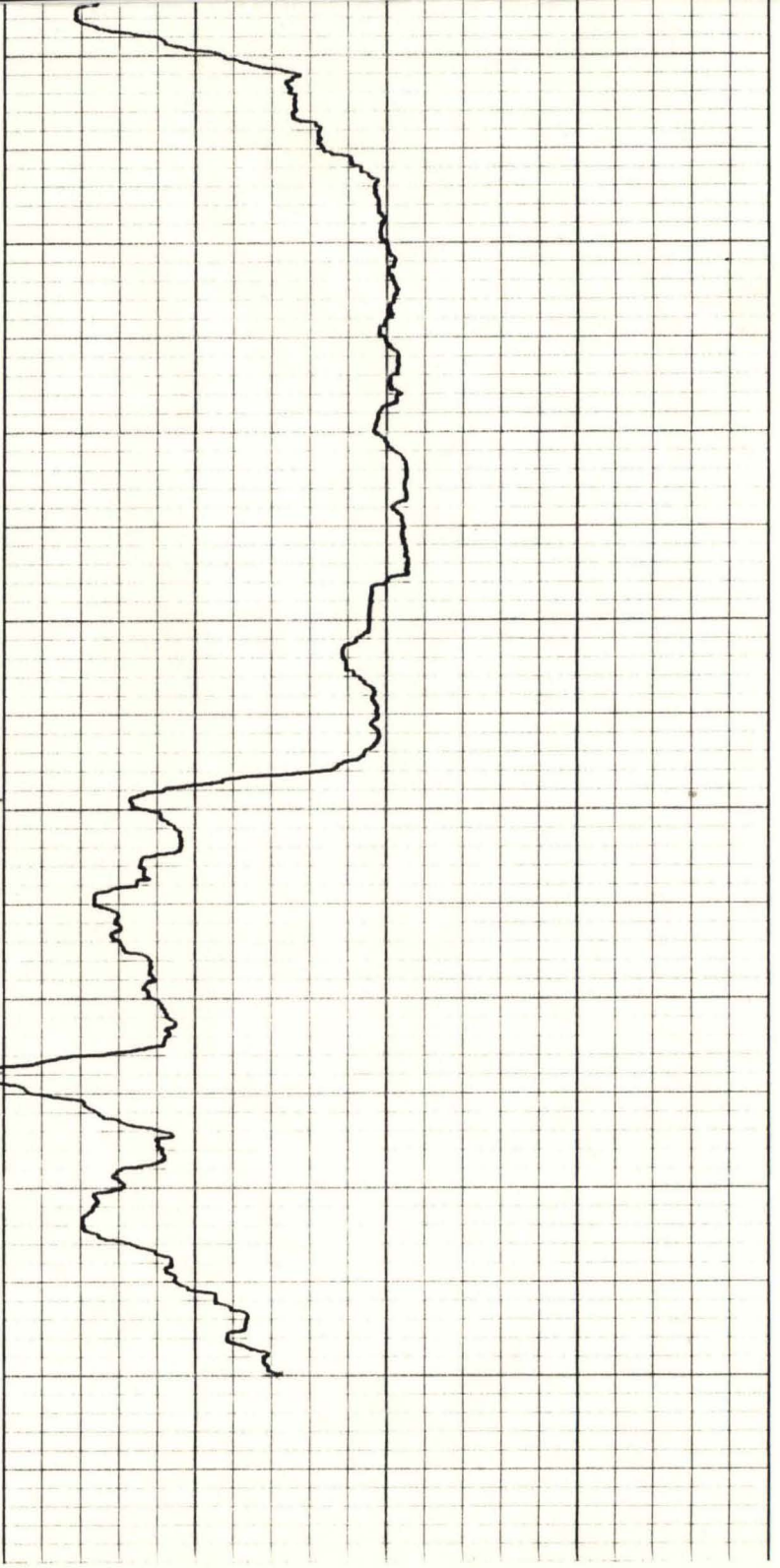
- 0' - 160' No fauna
160' - 180' Castle Hayne, few forams
180' - 210' No fauna
210' - 220' Unit A forams

Remarks: See above (PE-T-1-85)

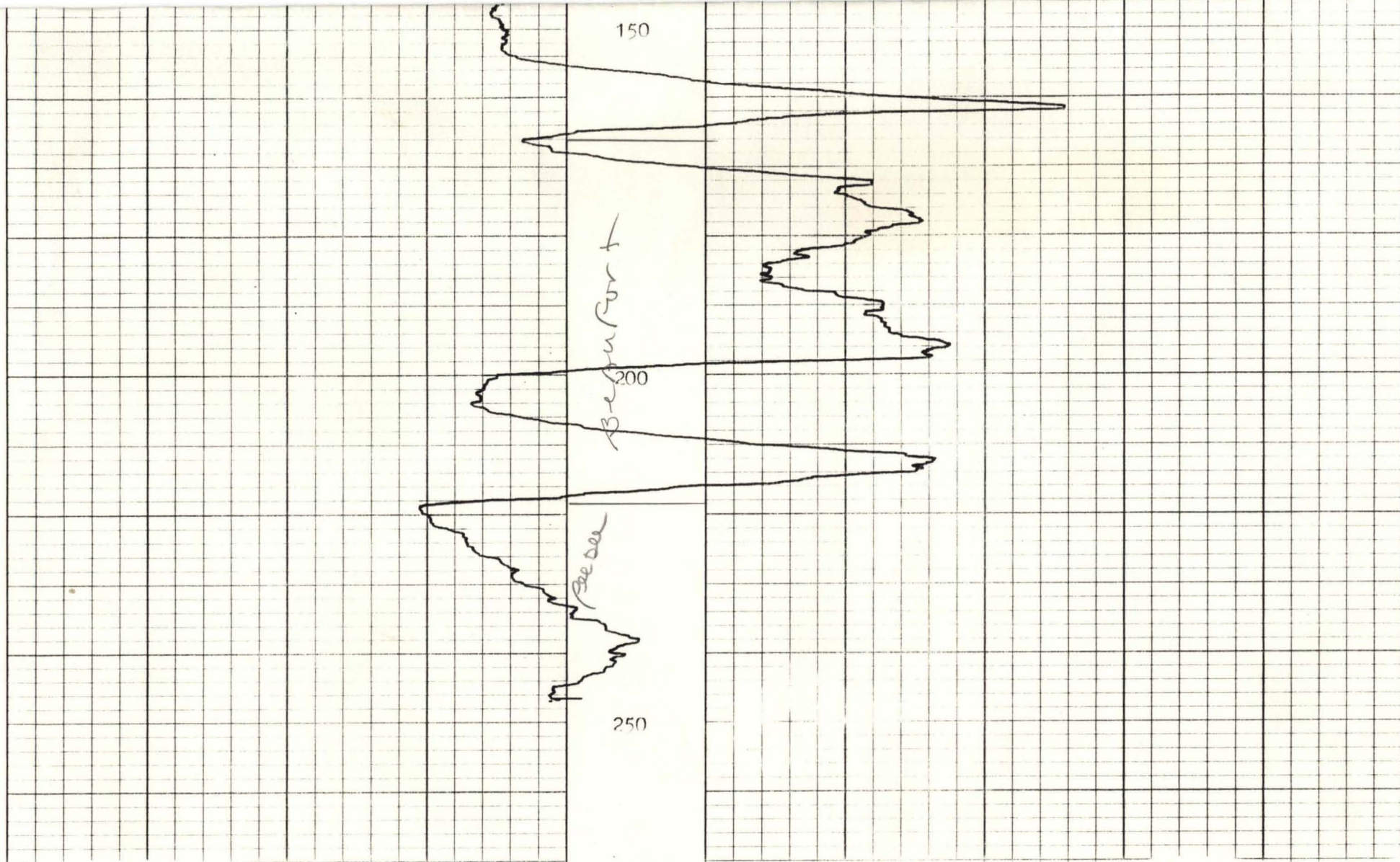
Castle Hayne
100

River Bend
50

0



PE-T-3-84



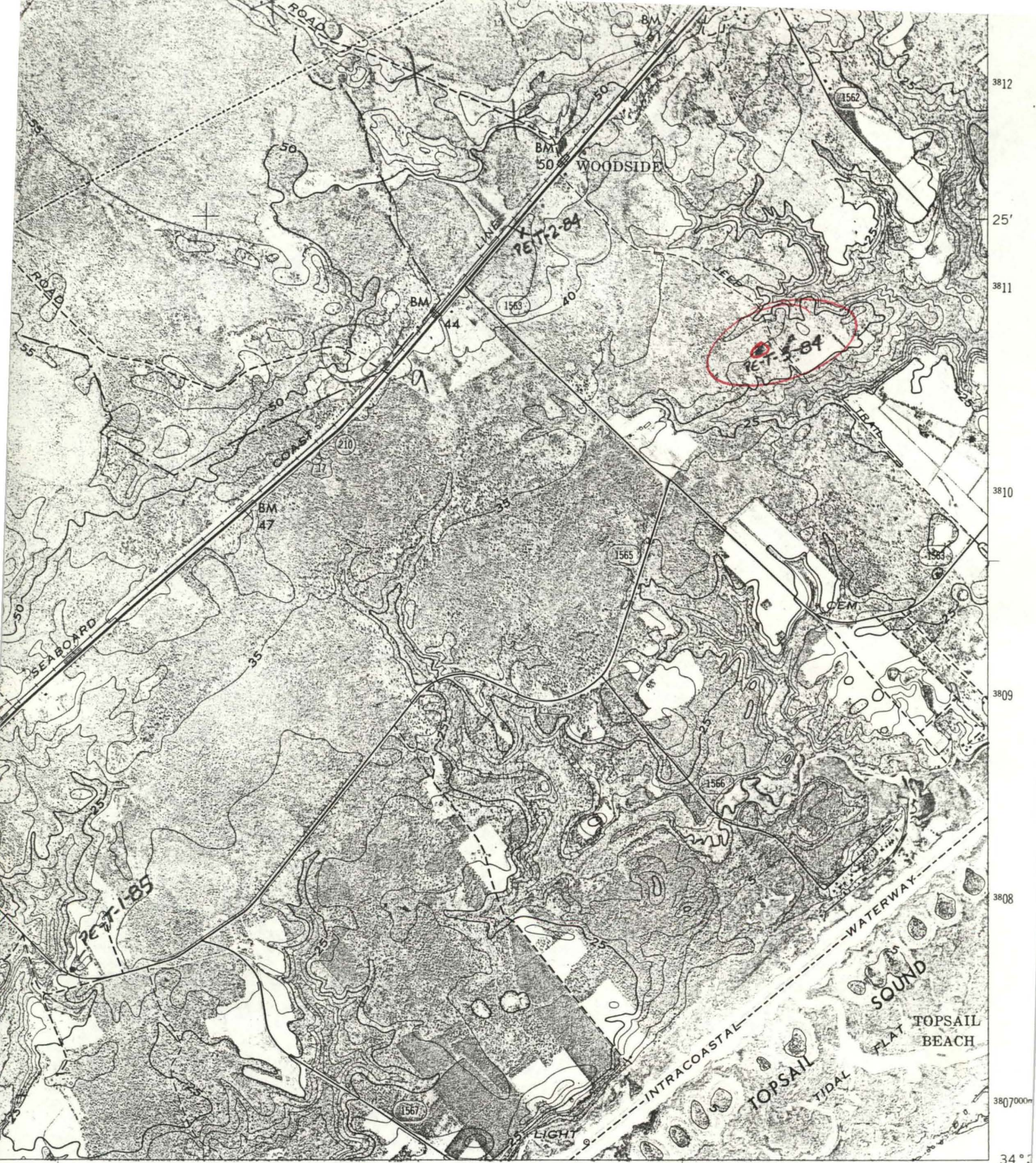
150

Beaufort

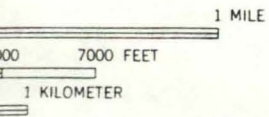
200

Bea Dee

250



PE-T-3-84



INTERIOR—GEOLOGICAL SURVEY, WASHINGTON, D. C.—1973
257 258000m E. 34° 77° 37' 30"

ROAD CLASSIFICATION

- Primary highway, hard surface _____
- Secondary highway, hard surface - - - - -
- Trails _____
- Light-duty road, hard or improved surface _____
- Unimproved road - - - - -

- Interstate Route
- U. S. Route
- State Route

TOPSAIL 7.5'