

PE-T-2-71

el. 30'
TD. 290'

0'
Surf. elev.
Sound.

20'

Pl. of Plots
used

PD

40'

60'

80'

100'

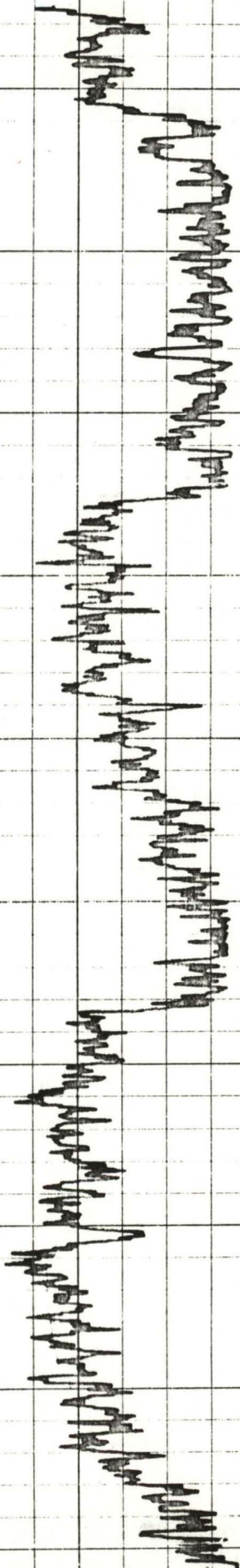
120'

140'

160'

180'

200'

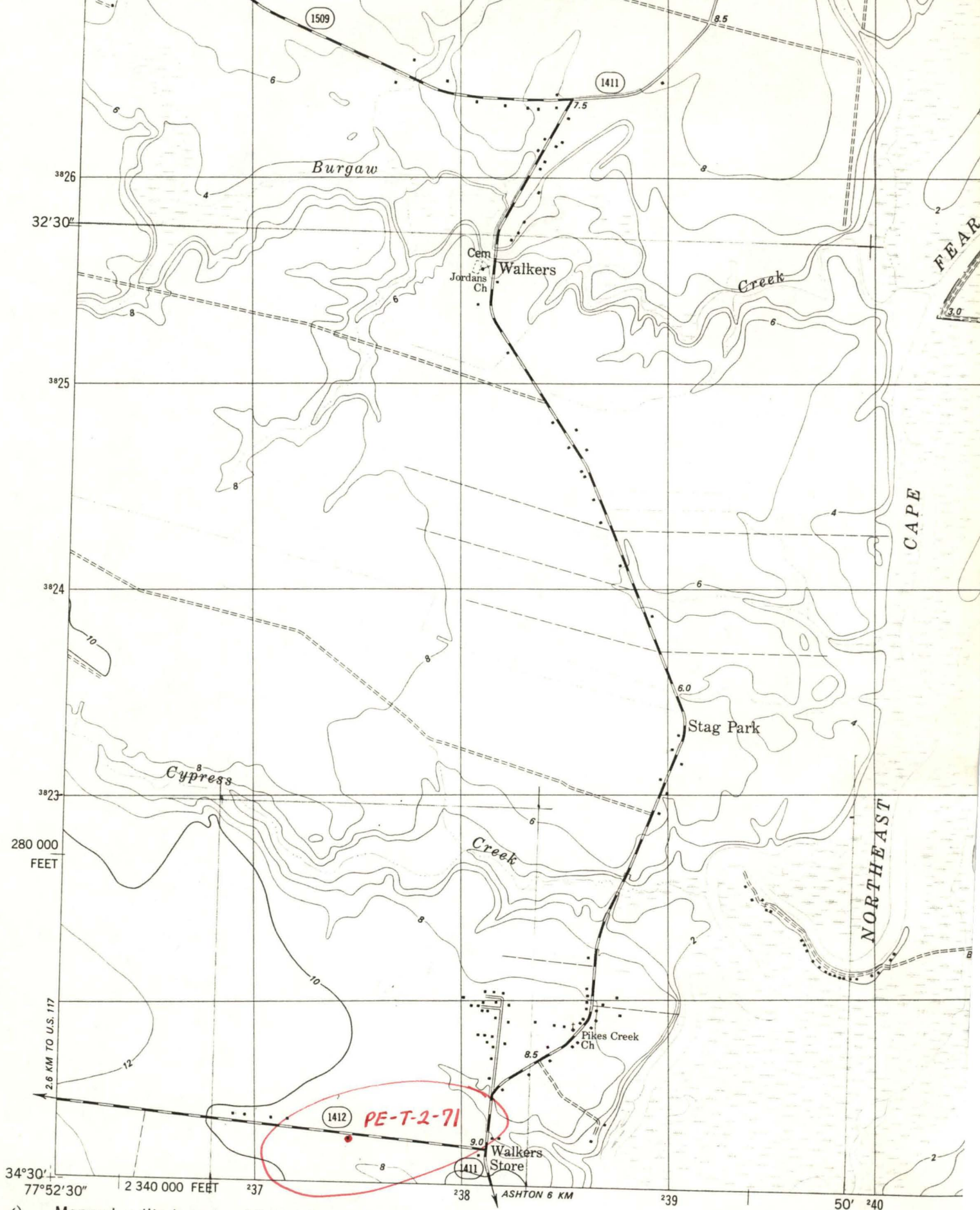


Correlated to
PE-T-2-53. VIA δ
Correlations need to
be verified (if possible)

Me/
Hr = .005

16' / min.

TC = 1



Mapped, edited, and published by the Geological Survey

Control by USGS, NOS/NOAA, and North Carolina Geodetic Survey

Topography by photogrammetric methods from aerial photographs taken 1977. Field checked 1979. Map edited 1981

Projection and 10,000-foot grid ticks: North Carolina coordinate system, (Lambert conformal conic)

1000 meter Universal Transverse Mercator grid, zone 18

STAG PARK 7 1/2

(ROCKY POINT)
5452 IV NW



6 1/2°
116° 41' 11.6"