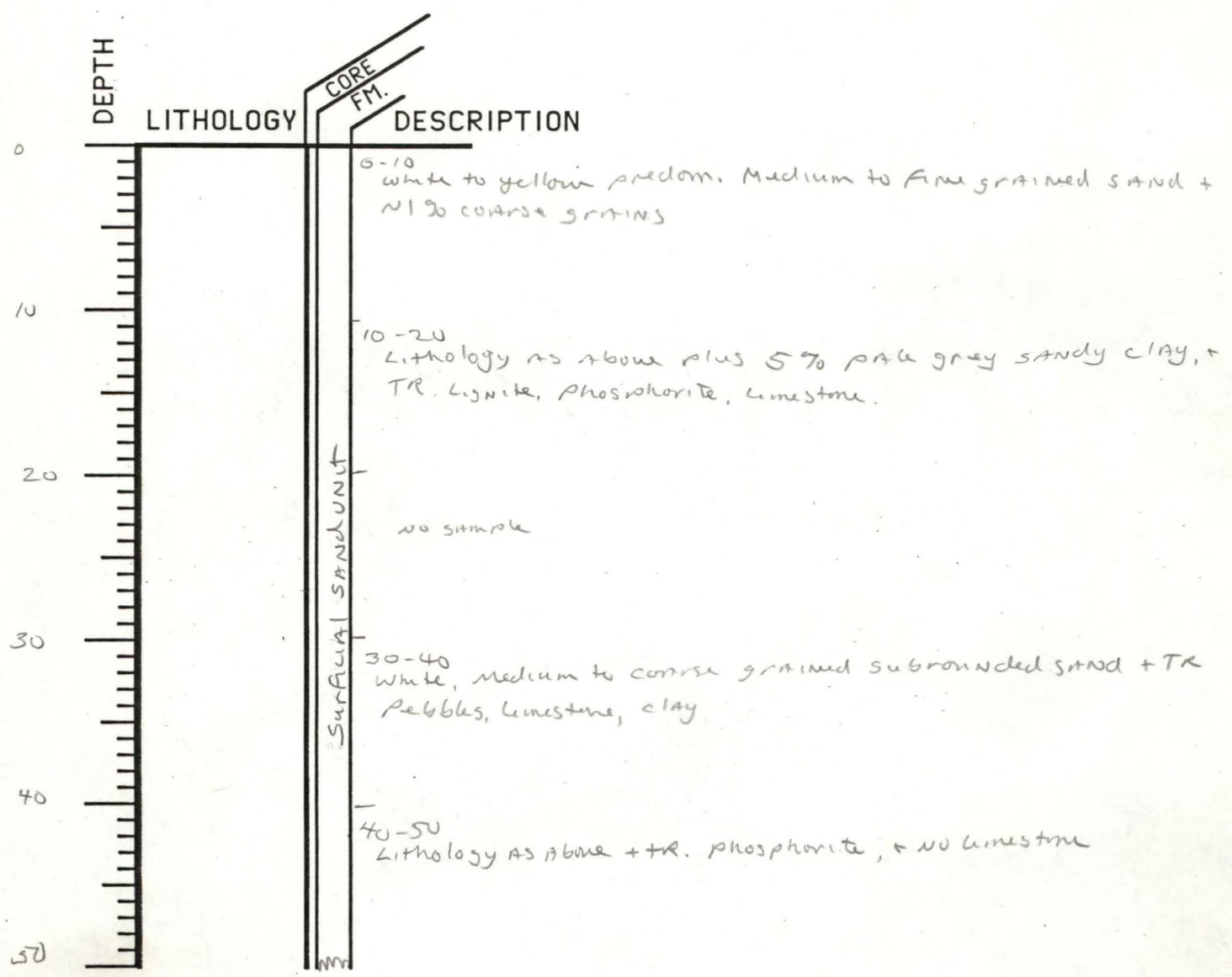


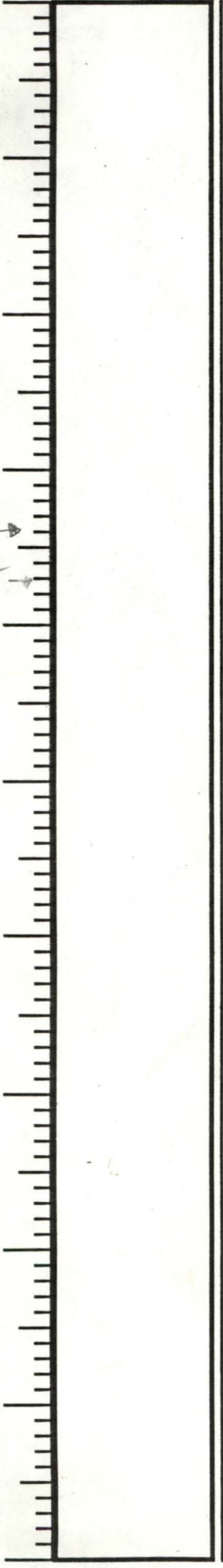
WELL CODE NH-T-1-85

ELEVATION 25

T.D. 180



50
60
70
80
90
100
110
120
130
140
150



CASTLE HAYNE

50-60
 150% samed AS ABOVE
 40% dingy white skeletal bryozoan
 5% ^{limestone} weathered glauconite
 TR brown silty sandstone, phosphorite, rock frags, shells, pyrite, silt
 5% pebbles ^{clay}, (good castle hayne benthic forms)

60-70
 Dense white skeletal limestone.

70-80
 Lithology AS ABOVE

80-90
 Lithology AS ABOVE plus 5% fine grained Lt. brown sandstone,
 some glauconite, plus some glauconitic limestone.

90-100
 Light grey fine grained subangular SAND + TR glauconite
 sample floated - NO CRATAEOUS FAUNA - Peedee picked on lith + log
 by correlation with NH-T-1-83

100-110
 Light grey fine to coarse grained sand + 2% chert limestone,
 1% phosphorite, 1% grey/brown sandstone - fine grained, + TR. grey/brown
 sandy clay + glauconite.

110-120
 Lithology AS ABOVE

Peedee

120-130
 brown fine grained sandstone + pale grey sandy limestone to
 very calcareous sandstone, + abundant fine grained sand
 - this is a more definitive Peedee lithology - ostrea present

130-140
 Lithology AS ABOVE

140-150
 white sandy skeletal limestone.

150-160
Lithology as above + 5% cased sandstone

160-170
pale grey sandy skeletal limestone

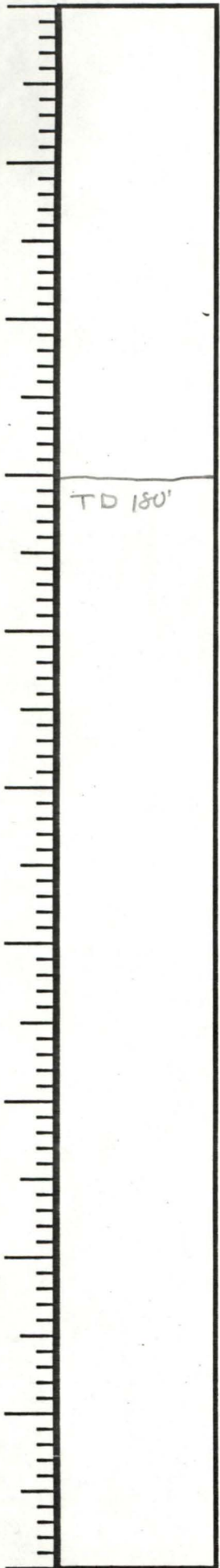
170-180
Lithology as above

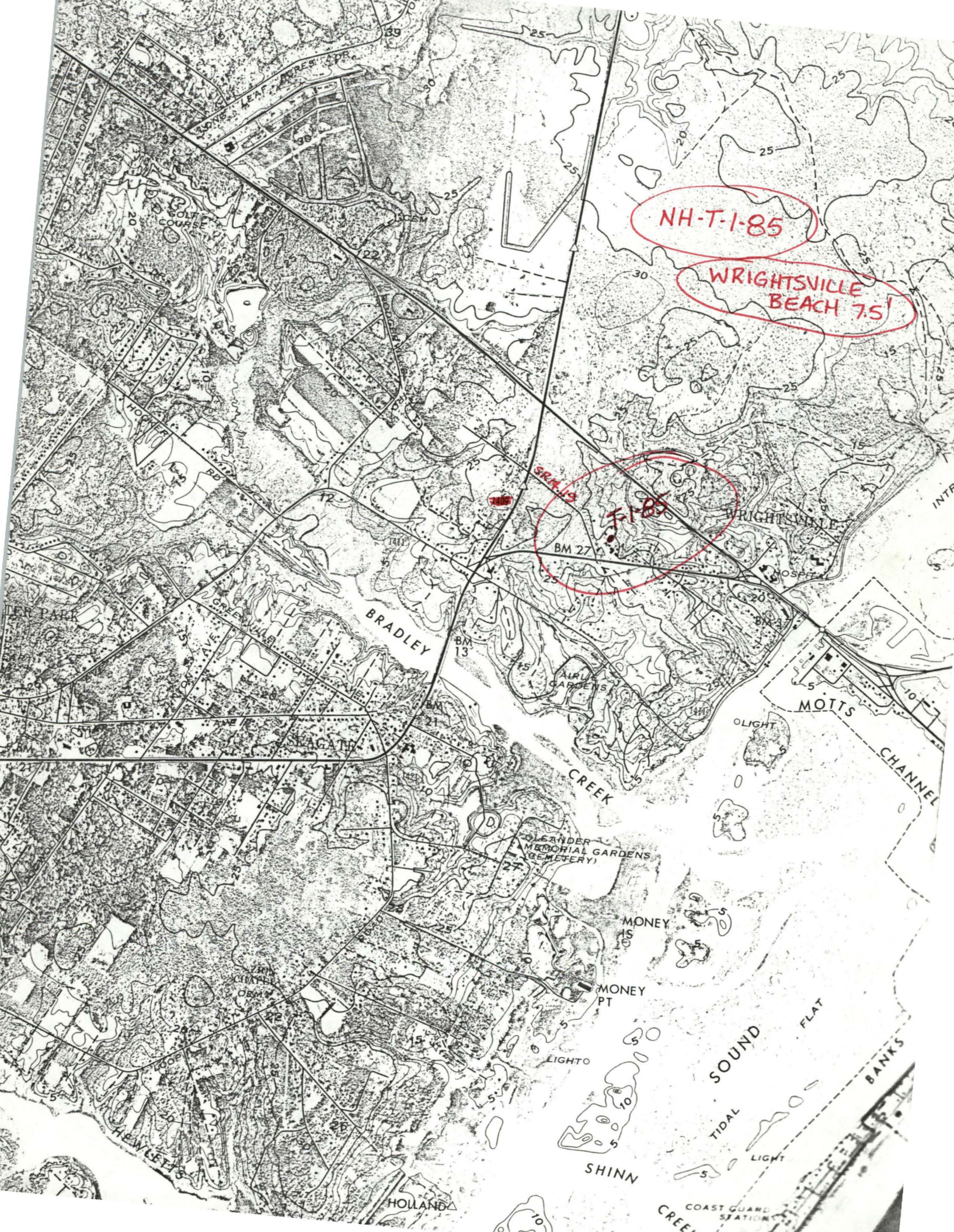
TD 180'

160

170

180





NH-T-1-85

WRIGHTSVILLE BEACH 7.5

F-185

BRADLEY

WRIGHTSVILLE

MOTT'S CHANNEL

CREEK

LEANDER MEMORIAL GARDENS (CEMETERY)

MONEY IS

MONEY PT

SOUND FLAT

SHINN

HOLLAND

COAST GUARD STATION

HEWLETT'S

VIA CHAPEL

LIGHTO

LIGHT

BANKS

SOUTH COURSE

GREEN VALLEY

OSPIE

INTR