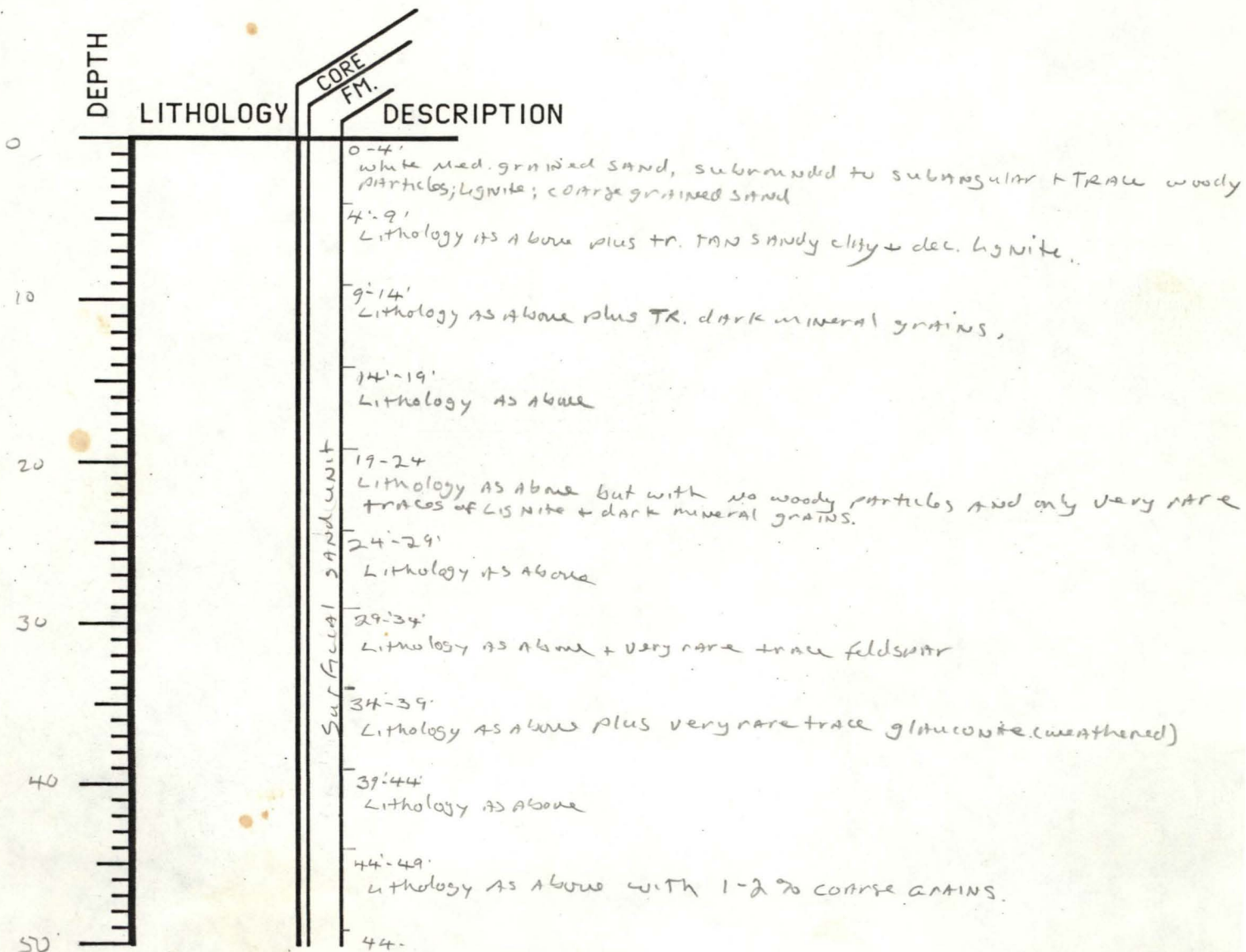
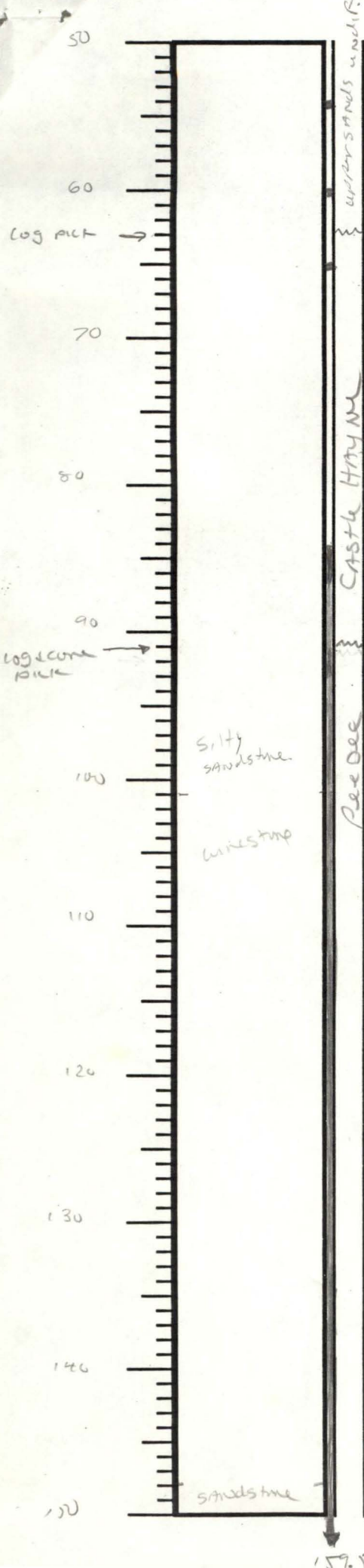


WELL CODE NH-T-1-83

ELEVATION : 36'

T.D. : 160'





54' Core - split spoon - Black, slightly sandy and very lignitic peat

60' Core - split spoon 90% white sand, coarse to fine grained, subangular to subrounded - 10% dk brown to black lignitic peat

65' Core - split spoon - white, slightly sandy skeletal limestone. Bryozoa common, very rare traces of glauconite. Fossils in place includes MEL. PLA, GYROCM plus Abund. Foram assembly

67' Core - split spoon - lithology as above - pecten shells present - light green weathered glauconitic limestone w/7%

70'-80' slightly sandy white skeletal limestone + up to 60% sand from above plus 10% green, sandy glauconitic limestone + cement from surface casing @ 77'

80'-90' * Lithology as above, i.e. mixed.

90-94' * Lithology as above plus tr. grey calcareous sandstone.

Note - core interval marked 84'-94' contains a clear break between very calcareous light grey sandstone above to soft dark brown/grey silty sandstone below. (both sandstones are fine grained) - Actual break would be between 87' + 92' - estimated from length of recovered core. upper calcareous sandstone contains traces of shell + phosphatic pebbles.

- Log indicates Diamond core bit 84'-TD @ 159.5' RAPID SCAN OF CORE

CORE 84'-92' fine grained calc. SS

92-111 greenish to brownish grey silty SS FG

111-148 grey sandy crst + mold L.S.

148-159.5 dense grey sandstone, slightly shelly + very calcareous

* sample washed from cored interval until somewhere between 84-99.5 contains COON FAUNA plus PTX ELG, HXX SP, GLO VOL

Change Code — County NEW HAMPSHIRE ^{Drilling} Date 3-30-83

Well Code (Number) CC-30, W-

Well Name WELL NO. 3

Owner CORNING GLASS WORKS

Depth 160'

TOPO

Elevation +36' Lat. 341504 Long. 775209

Information G-LOGS/FM SAMPLES
(CUTTINGS - SPLIT SPOON -
CORES) Drill SOILS MATERIALS & ENGINEERING, INC.

X Ref. 1) _____ 2) _____ 3) _____

4) _____ 5) _____

DATE LOGGED : 3-3-83

By : SOIL MATERIALS ENGINEERING, INC.