

Date: October 22, 1979

State: North Carolina

County: Lenoir

Well Number: NC-LEN-T-1-79

Well Name: State of North Carolina, R. E. L. Johnson, Jr.

Location: 35°17'10", 77°29'44"

Elevation: 10' - G.L., 12' - K.B.

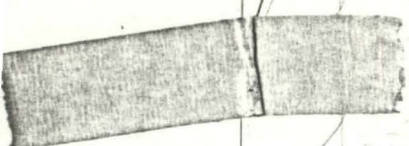
Elevation correction: 12'

20' - G.L. (GRIFTON 7.5 TOPO)

22

Unit	Log Tops (feet)	SLD Tops (feet)	Thickness (feet)
Post-Miocene	4	8	20
Late Miocene			
Middle Miocene			
Oligocene			
Jackson - Eocene			
Claiborne - Eocene			
Sabine - Eocene			
Midway - Paleocene	24	- 12	26
Unit A	50	- 38	100
Unit B	150	-138	102
Unit C	254	-240	278
Unit D	530	-518	130
Unit E			
Unit F	660	-648	95
Unit G			
Unit H			
Unit I			
Basement	755	-743	

Remarks: TD 755' (743' - SLD)



water level -
measuring
point

553-4572

GRIFTON
7.5

