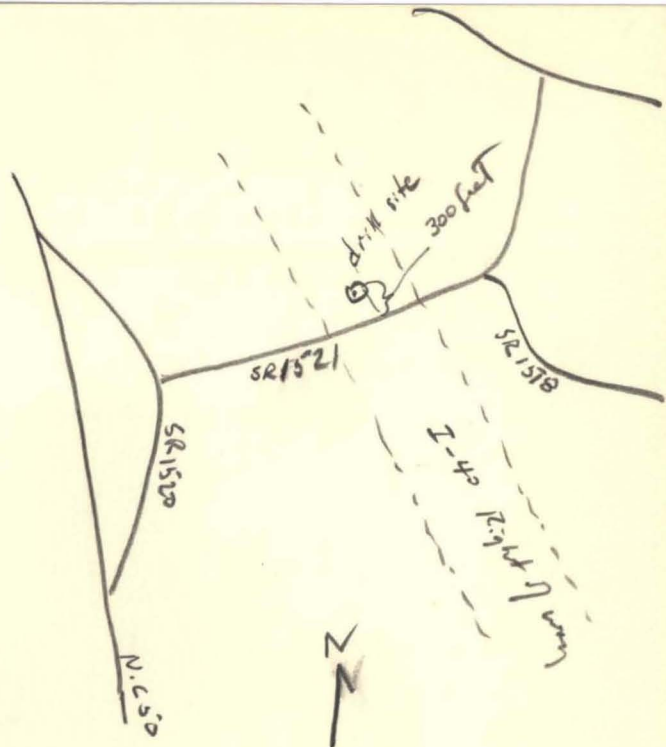


JH-A-1-84

353157
783410

elev. 280



JH-A-1-84

2/15/84

SRB

drilled 2/15/84 by
NC DOT - one hollow stem
pile then drill and
split spoon

Yorktown-0-23 1/2 feet

Crs sand-23 1/2 - 42 feet (unit F?)

basement 42 - 44 feet

- samples 23 1/2 feet

" 29' feet firm drilling at
30 1/2 feet

pea gravel at 31 feet (1/2 foot thick)

then fine clean sand

sample at 34 feet med sand, minor clay

sample at 39 feet med-sand

sample at 44 feet basement

very firm drilling at 42 feet

basement steeply dipping phyllite

similar to Beauden and Middle


crack syenite

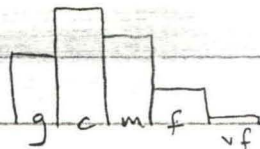
280
42

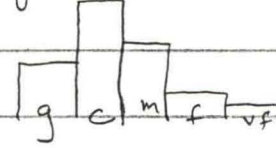
238


280
- 23 1/2

256 1/2
23 1/2
279

Elev 39' 4 granules r rose (c-f)
 280 r secondary FeS₂ cont tr mica (c-vf) 1% HM (f-vf)
 Ykt 0-23.5  w srt'd f SD FeOx
 SAP@ 42/44 drav rut

34 secondary pyrite cont'd ss tr rose (g-m)
 ↓ tr gy & wt f spar ↑ tr mica (m-vf) HM (m-vf)
 m srt'd granular c sd FeOx
 staur

29 tr gy & wt f spar (c-f) ↓ tr rose (c-m)
 pyrite cont'd ss tr mica (m-vf) 1% HM (m-vf)
 m srt'd granular c sd pk garnet FeOx
 staur monzonite (lt green)

23.5 tr gy f spar (g-f) ↓ tr rose (g-f)
 pyrite cont tr mica (m-vf) HM (c-vf)
 granular m srt'd c sd pk garnet
 schorl FeOx
 staur rut

44 SAP as vlt fan micaceous sericite meta?
 foliated