

(Core logs and locations are available in a thesis by
B.W. Harvey, "The microscopic Petrography of the Boy Scout-Jones
Molybdenum Prospect, Halifax Co., N.C."
North Carolina State University, Raleigh, N.C.)

HA-C-10-XX

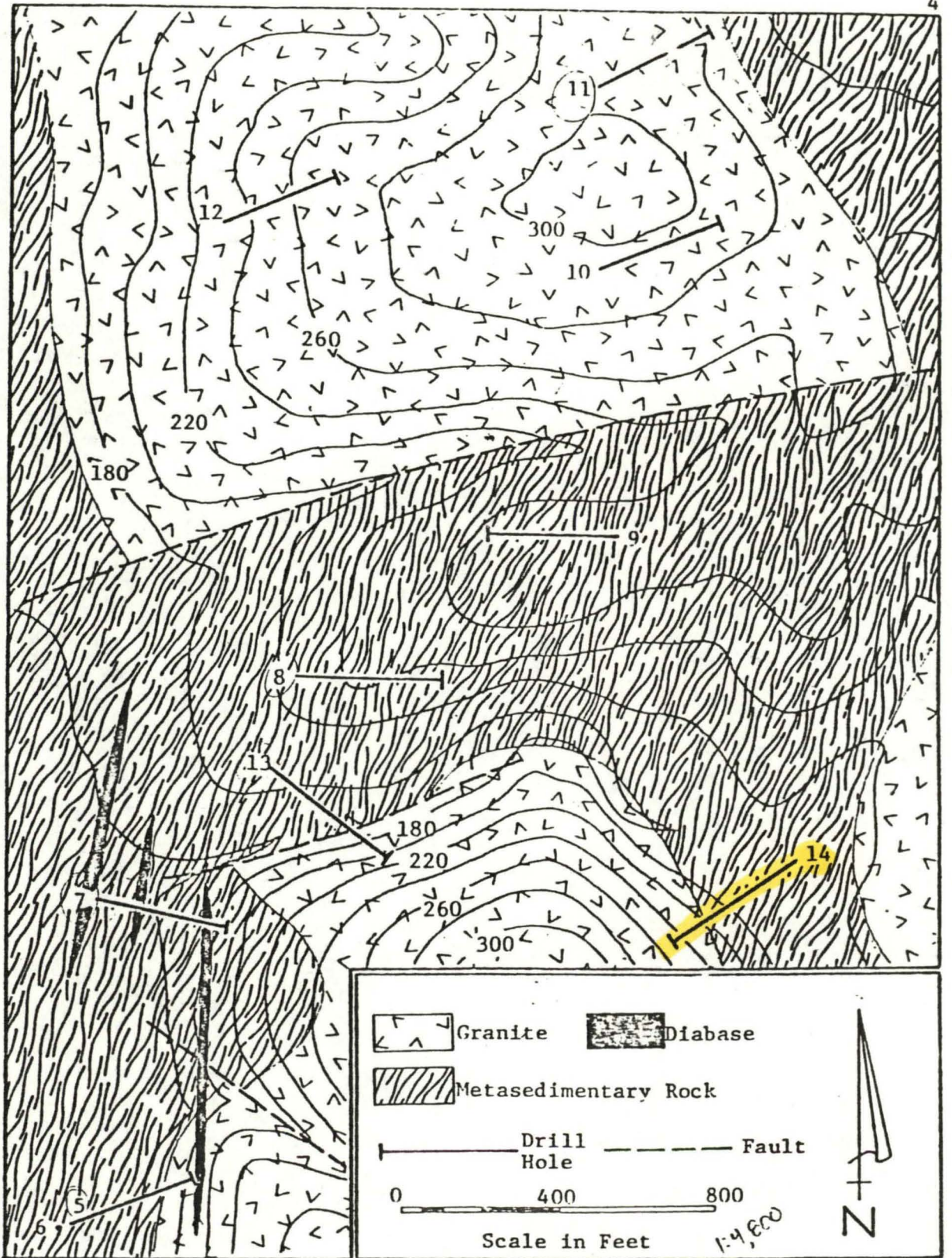


Figure 2. Geologic Map of the Boy Scout-Jones Molybdenum Prospect Showing Location of Drill Holes (from Bear Creek Mining Company).

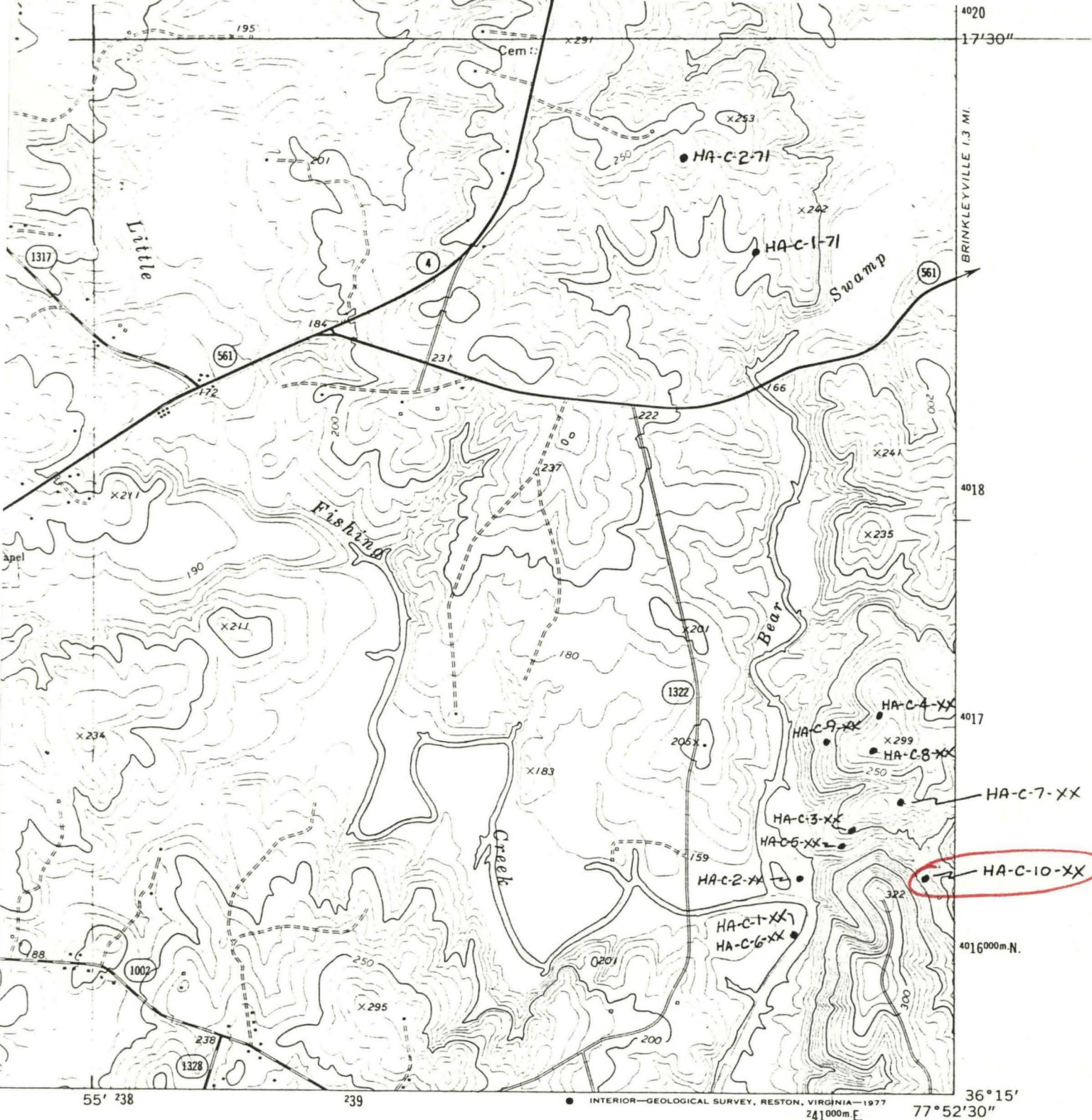
FROM THESIS MENTIONED ON PREVIOUS PAGE.

311/357

Drill Hole #14

Depth	Description
0'-34'	Overburden.
34'-60'	Dark gray to black, slightly banded argillite, numerous biotite schist stringers, moderately iron-stained, minor disseminated pyrite.
60'-81'	Dark green, fine-grained, biotite schist, iron-stained, minor disseminated pyrite, several 1/4" quartz veinlets, barren.
81'-153'	Dark green to dark gray, fine-grained, banded argillite, numerous stringers of schist and epidote, minor disseminated pyrite, numerous 1/4" to 1/2" quartz veinlets, barren or with only a trace of pyrite.
153'-157'	Quartz vein, minor pyrite.
157'-257'	Dark green to dark gray, fine-grained, banded argillite, interval contains numerous 1/4" to 1/2", slightly altered granite stringers and abundant schist stringers, minor to good amount of disseminated pyrite in schist and argillite, trace to minor disseminated pyrite in granite stringers.
257'-259'	Light pink to white, medium-grained, moderately altered granite, minor disseminated pyrite.
259'-276'	Dark green to gray, banded argillite, minor disseminated pyrite, several 1/2" quartz veinlets with minor pyrite and chalcopyrite.
276'-296'	Dark green to gray, banded argillite, minor disseminated pyrite, abundant epidote, calcite, and gypsum in fractures.
296'-311'	Dark green to gray, banded, slightly altered argillite, numerous 1/2" quartz veinlets with minor pyrite.
311'-323'	Dark pink, medium-grained, slightly altered granite, good disseminated molybdenite (rosettes) and pyrite, numerous 1/2" quartz veinlets with minor pyrite.
323'-349'	Dark pink, medium-grained, moderately altered granite, good amount of disseminated pyrite and molybdenite, several 1/2" to 2" quartz veinlets with good pyrite and molybdenite.
349'-357'	Dark pink, medium-grained, moderately altered granite, good disseminated pyrite and molybdenite.

- 37'-358' Orange-brown, fine-grained, feldspar stringer, no quartz veinlets and no mineralization.
- 38'-360' Quartz vein, minor pyrite.
- 350'-377' Pink, medium-grained, moderately altered granite, good disseminated pyrite and minor disseminated molybdenite, several 1/2" quartz veinlets with minor pyrite.
- 377'-380' Quartz vein, barren, with several stringers of fine-grained feldspar.
- 380'-391' Pink, medium-grained, moderately altered granite, good disseminated pyrite and minor disseminated chalcopryrite.
- 391'-396' Quartz vein, excellent pyrite and molybdenite, trace of chalcopryrite.
- 396'-412' Pink, medium-grained, moderately to intensely altered granite, chlorite on open fractures, fair amount of disseminated pyrite and molybdenite, several 1/2" to 1" quartz veinlets with minor pyrite and molybdenite.
- 412'-421' Pink, medium-grained, slightly to moderately altered granite, minor disseminated pyrite and chalcopryrite, sericite on open fractures, trace disseminated fluorite.
- 421'-427' Pink, medium-grained, moderately altered granite, minor disseminated pyrite.
- 427'-432' Quartz vein, discolored (dark gray), very good pyrite and molybdenite.
- 432'-439' Pink, medium-grained, moderately altered granite, minor disseminated pyrite, several 1/4" quartz veinlets, barren.
- 439'-445' Quartz vein, discolored (dark gray), good pyrite and molybdenite.
- 445'-467' Pink, medium-grained, slightly altered granite, minor disseminated pyrite, several 1/2" quartz veins, barren.
- 467'-476' Pink, medium-grained, moderately altered granite, minor disseminated pyrite, one 6" quartz vein with good pyrite and molybdenite.
- 476'-500' Pink, medium-grained, fresh to slightly altered granite, several feldspar stringers, chlorite and sericite on open fractures, minor disseminated pyrite and molybdenite, several 1/4" to 1/2" quartz veinlets, barren or with only a trace of molybdenite.
- 500' Hole bottomed.



ROAD CLASSIFICATION

- Primary highway, hard surface _____
- Secondary highway, hard surface _____
- Light-duty road, hard or improved surface _____
- Unimproved road _____
- Interstate Route (Shield symbol)
- U. S. Route (Shield symbol)
- State Route (Circle symbol)



QUADRANGLE LOCATION

HOLLISTER, N. C.
N3615-W7752.5/7.5

1973

AMS 5456 IV SW-SERIES V842

(RINGWOOD)
5456 III NE