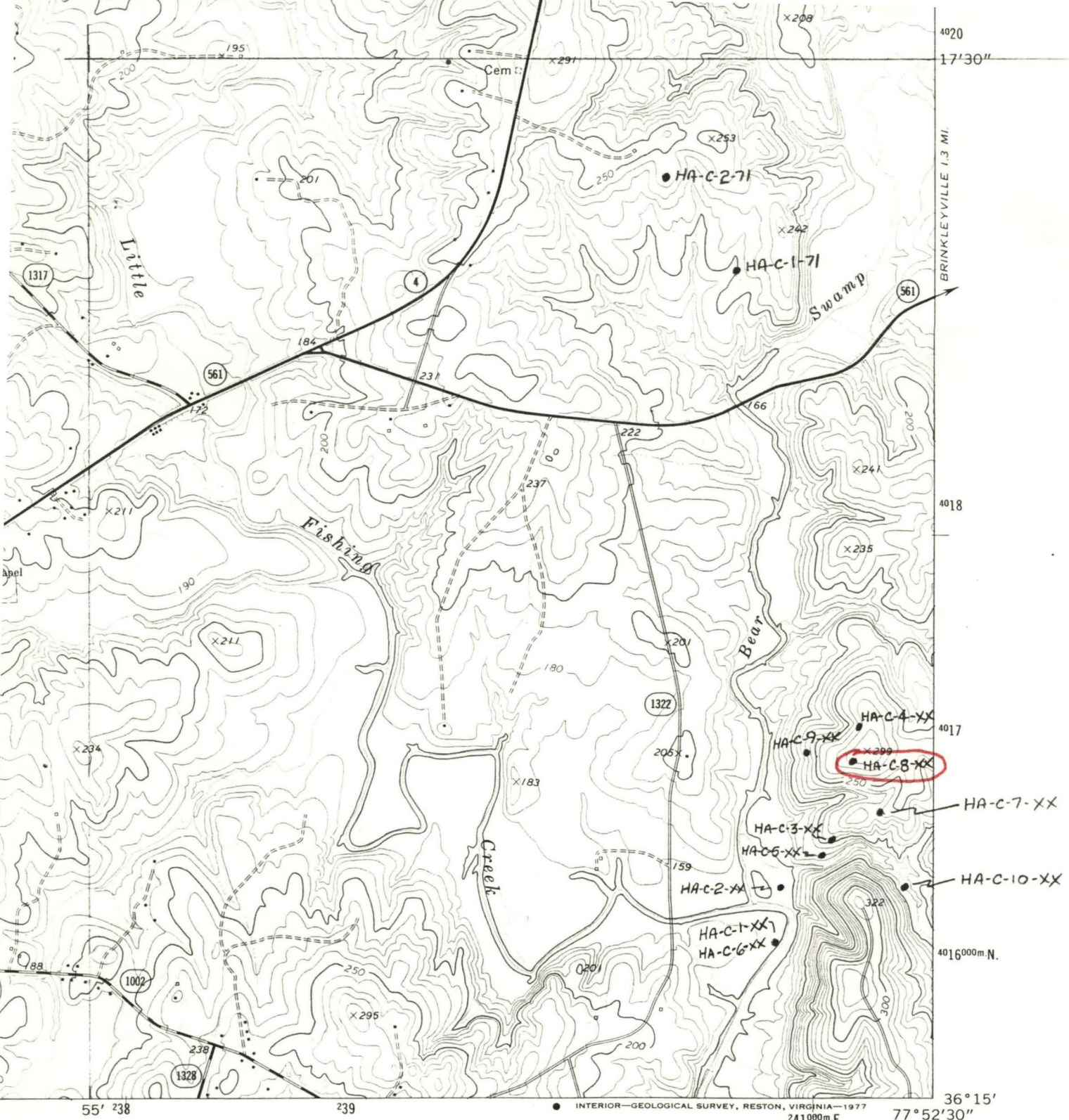


(Core logs and locations are available in a thesis by
B.W. Harvey, "The microscopic Petrography of the Boy Scout-Jones
Molybdenum Prospect, Halifax Co., N.C."
North Carolina State University, Raleigh, N.C.)



1 MILE



ROAD CLASSIFICATION

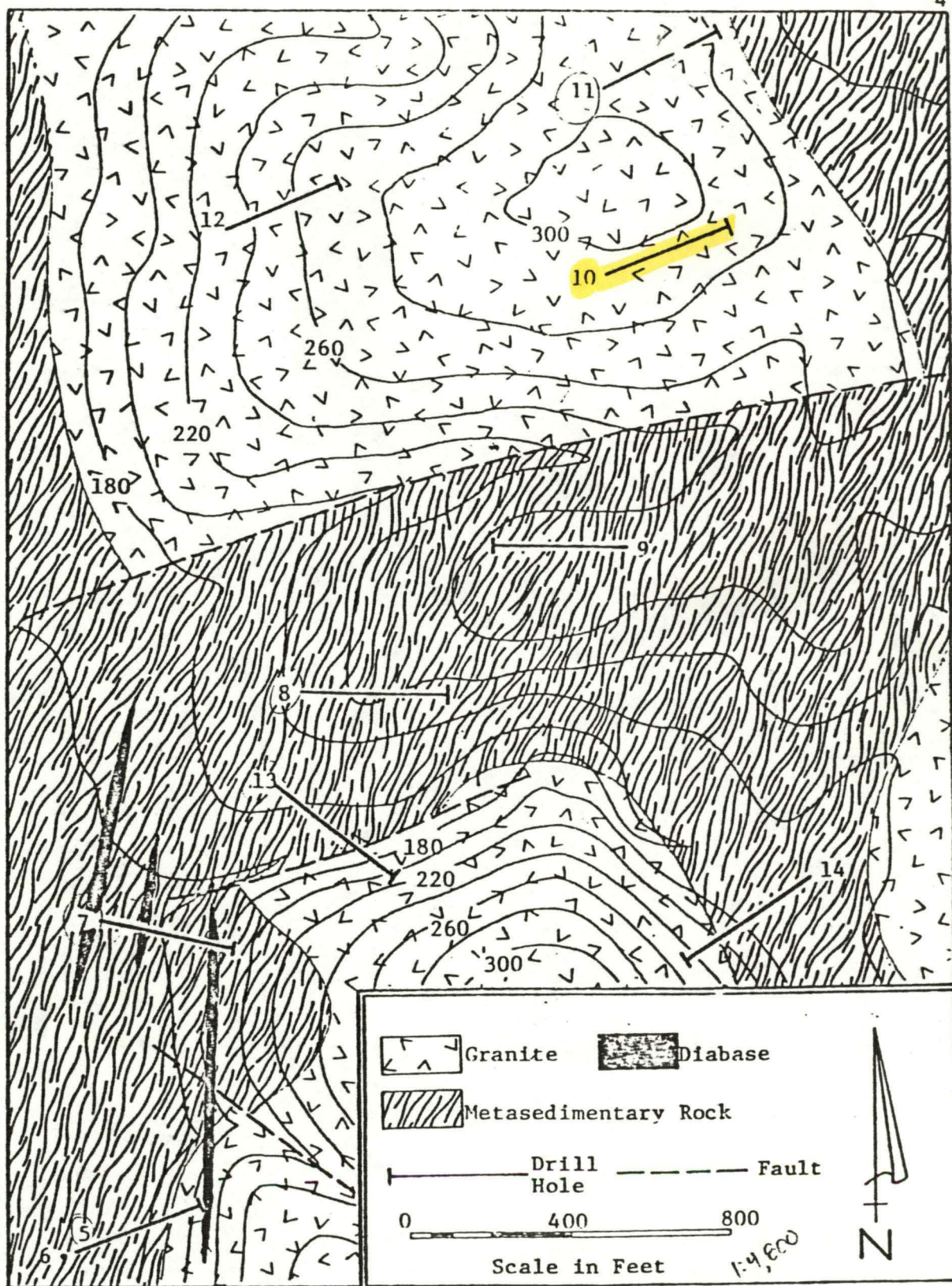
- Primary highway, hard surface
- Secondary highway, hard surface
- Light-duty road, hard or improved surface
- Unimproved road
- Interstate Route
- U. S. Route
- State Route

HOLLISTER, N. C.
N3615-W7752.5/7.5

1973

AMS 5456 IV SW-SERIES V842

(RINGWOOD)
5456 III NE



HA-C-8-XX

Figure 2. Geologic Map of the Boy Scout-Jones Molybdenum Prospect Showing Location of Drill Holes (from Bear Creek Mining Company).

FROM THESIS MENTIONED ON PREVIOUS PAGE.