

Drill Hole #6

428

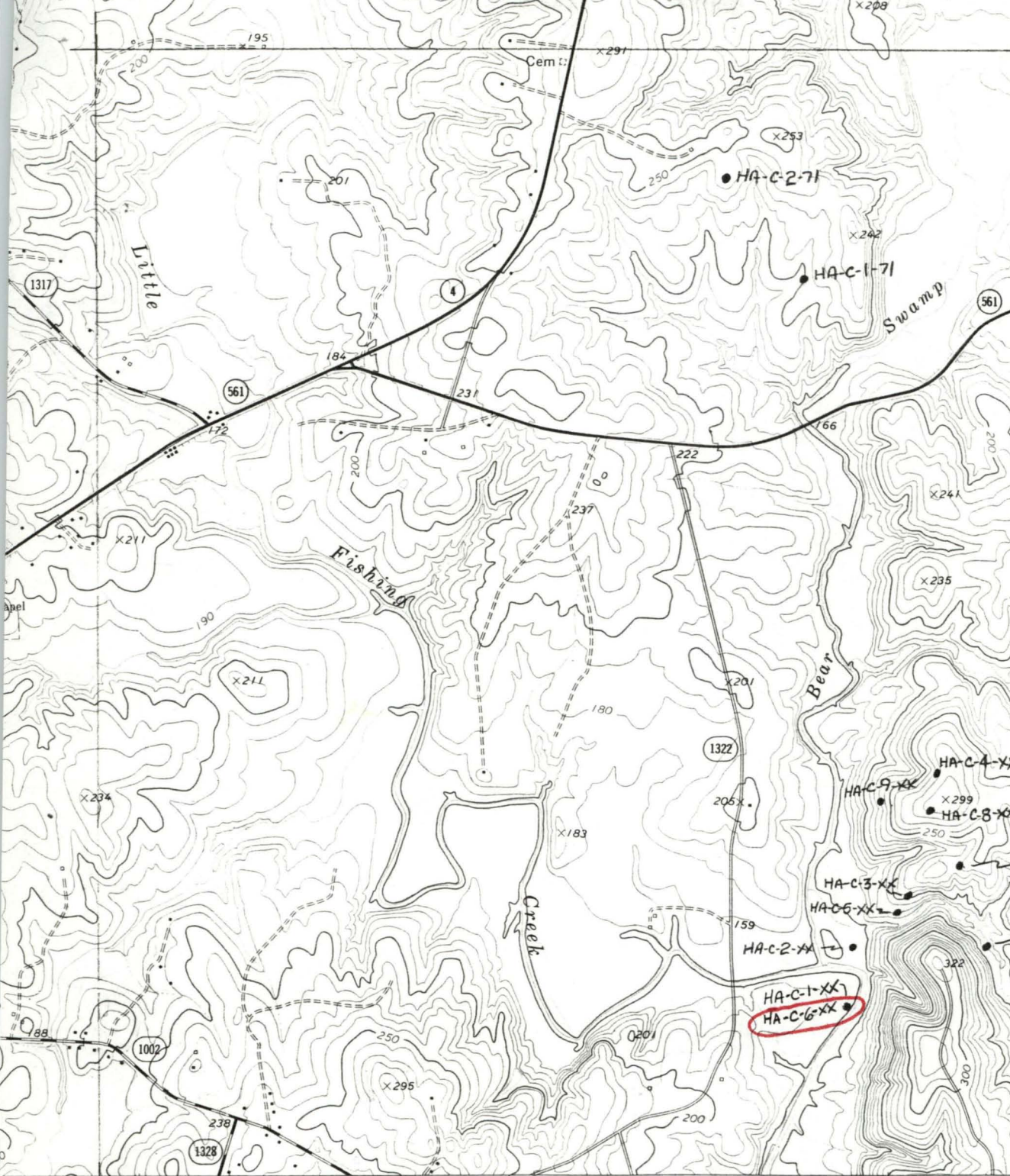
Depth	Description
0'-48'	Overburden.
48'-57'	Medium gray to green, banded tuff, lighter interbedded tuff layers, iron-stained on many fractures, very minor disseminated pyrite.
57'-66'	Gray to dark green, banded tuff, minor epidote, chlorite, and carbonate stringers and veinlet fillings.
66'-74'	Gray to dark green, fine-grained, banded tuff, thin stringers of brown tuff or argillite, minor epidote stringers, thin quartz veinlet with minor amount of molybdenite.
74'-84'	Gray, green, and brown, interlayered tuff, chlorite stringers and carbonate fracture fillings, 1/4" feldspar or granite stringer, very minor disseminated pyrite.
84'-92'	Gray to brown, fine-grained tuff, numerous chlorite stringers, very minor disseminated pyrite.
92'-100'	Gray to brown, fine- to medium-grained, slightly banded tuff, very minor disseminated pyrite.
100'-108'	Gray to brown, fine- to medium-grained tuff, very little banding, very minor disseminated pyrite, several chlorite stringers.
108'-117'	Gray to brown, fine-grained, slightly banded tuff, chlorite stringers, very minor disseminated pyrite.
117'-127'	Black, non-banded tuff, some red granite or feldspar stringers, minor disseminated pyrite.
127'-136'	Dark green banded tuff, minor epidote along fractures, minor disseminated pyrite, several chlorite stringers.
136'-143'	Black, fine-grained, slightly banded tuff, several 1/4" to 1/2" feldspar stringers, minor disseminated pyrite throughout tuff.
143'-149'	Dark green to black, fine-grained, slightly banded tuff, minor epidote veinlets, minor disseminated pyrite, several 1/4" to 1/2" pink feldspar or granite stringers.
149'-159'	Dark green to black banded tuff, 5" granite vein present, minor disseminated pyrite in tuff and granite.

- 159'-169' Dark green to black, fine-grained, banded tuff, more reddish in the last 2', minor disseminated pyrite, 8" pink, medium-grained granite stringer present, containing disseminated pyrite.
- 169'-179' Black to reddish-black, fine-grained tuff, minor disseminated pyrite, trace of molybdenite in 1/2" to 1" quartz veinlets, last 4' of interval highly altered, probably silicified, good amount of pyrite in highly altered area.
- 179'-188' Pink, medium-grained, slightly altered granite, trace of disseminated molybdenite, numerous 1/2" to 2" quartz veinlets with fair amounts of pyrite and molybdenite, trace of chalcopyrite.
- 188'-197' Pink, medium-grained, slightly altered granite, more feldspar-rich locally, numerous 1/4" quartz veinlets with minor pyrite and molybdenite, minor disseminated pyrite in feldspar-rich areas.
- 197'-206' Dark brown, fine-grained, biotite granite, several 1" to 2" quartz veins with good amount of pyrite and traces of chalcopyrite.
- 206'-215' Pink, medium-grained, slightly altered granite, trace of disseminated pyrite, 8" quartz vein near middle of interval, apparently barren or with only very minor trace of pyrite.
- 215'-219' Pink, medium-grained, slightly altered granite, alteration in places is moderate, some disseminated pyrite present, numerous 1/2" to 1" quartz veins either barren or with only trace of pyrite and molybdenite.
- 219'-222' Dark brown, medium-grained, biotite granite, several 1/4" to 1/2" quartz veinlets containing pyrite and trace of chalcopyrite.
- 222'-225' Pink, medium-grained, slightly altered granite, trace of disseminated pyrite.
- 225'-230' Pink, fine- to medium-grained, slightly altered granite, no mineralization.
- 230'-238' Quartz vein, minor amounts of pyrite, chalcopyrite, and molybdenite.
- 238'-244' Dark red, fine- to medium-grained, fresh granite, no quartz veinlets and no mineralization.
- 244'-248' Pink, medium-grained, fresh granite, one 1/2" quartz veinlet, barren.

- 248'-249' Quartz vein, good amount of pyrite and trace of molybdenite.
- 249'-253' Pink, medium-grained, fresh granite, no quartz veinlets and no mineralization.
- 253'-264' Pink, medium-grained, slightly altered granite, minor disseminated pyrite, several 1/4" quartz veinlets, either barren or with only a trace of pyrite.
- 264'-279' Pink, medium-grained, slightly altered granite, minor disseminated pyrite, several 1/4" to 1/2" quartz veinlets containing pyrite and traces of molybdenite.
- 279'-281' Dark red, very fine-grained granite or feldspar zone, minor disseminated pyrite and molybdenite.
- 281'-282' Black, fine-grained, banded tuff or chlorite schist, minor disseminated pyrite.
- 282'-287' Dark red, fine-grained granite or feldspar zone, minor disseminated pyrite and molybdenite, thin banded tuff stringer with good amount of disseminated pyrite.
- 287'-292' Pink, medium-grained, moderately altered granite, 10" quartz vein with good amount of pyrite and trace of molybdenite.
- 292'-302' Pink, medium-grained, moderately altered granite, alteration intense near contact with 10" quartz vein, minor disseminated pyrite and molybdenite in granite, vein contains minor amount of pyrite.
- 302'-311' Pink, medium-grained, moderately altered granite, several 1/2" to 3" quartz veins with traces of molybdenite.
- 311'-320' Dark red, medium-grained, fresh granite, several 1/2" quartz veinlets and one 11" quartz vein containing fair amount of pyrite and molybdenite.
- 320'-330' Pink, medium-grained, fresh granite, minor disseminated pyrite, several 1/2" to 1" quartz veinlets with minor amounts of pyrite and molybdenite.
- 330'-339' Red-orange, fine- to medium-grained granite, numerous stringers of orange, fine-grained feldspar, minor disseminated pyrite.
- 339'-348' Red-orange, fine-grained granite with feldspar stringers, several 1/4" quartz veinlets with traces of pyrite and molybdenite.
- 348'-357' Red to orange, fine- to medium-grained, fresh granite, several 1/4" quartz veinlets with traces of pyrite and molybdenite, trace of disseminated pyrite in granite.

- 357'-360' Pink, medium-grained, fresh granite, minor disseminated pyrite, no quartz veinlets.
- 360'-362' Dark red, fine-grained granite, no quartz veinlets and no mineralization.
- 362'-366' Pink, medium-grained, fresh granite, minor disseminated pyrite.
- 366'-370' Quartz vein, trace of pyrite and molybdenite.
- 370'-375' Light pink, medium-grained, slightly altered granite, high feldspar content, first 18" appears sheared with good molybdenite paint on fractures, good amount of pyrite and molybdenite disseminated in unsheared granite.
- 375'-385' Dark pink, medium-grained, slightly altered granite, no quartz veins and no mineralization.
- 385'-395' Pink, medium-grained, slightly altered granite, 3" quartz vein with good amount of pyrite and molybdenite.
- 395'-402' Pink, medium-grained, slightly altered biotite granite, several 1/2" quartz veinlets containing only traces of molybdenite.
- 402'-403' Quartz vein, barren.
- 403'-405' Light pink, fine-grained, fresh to slightly altered granite, no quartz veinlets and no mineralization.
- 405'-413' Pink, medium-grained, fresh biotite granite, no quartz veins and no mineralization.
- 413'-423' Pink to brown, fine-grained, biotite granite, several 1/4" quartz veinlets with traces of molybdenite.
- 423'-425' Pink, medium-grained, moderately altered granite, minor disseminated pyrite.
- 425'-428' Quartz vein, barren.
- 428'-431' Pink, medium-grained, moderately altered granite, excellent pyrite and molybdenite present.
- 431'-433' Quartz vein, barren or with only a trace of molybdenite.
- 433'-447' Pink, medium-grained, slightly altered granite, minor disseminated pyrite.
- 447'-448' Dark green to gray, slightly banded tuff.

- 448'-451' Pink, medium-grained, fresh to slightly altered granite, minor disseminated pyrite.
- 451'-460' Pink, fine-grained, fresh granite, several 1/2" quartz veinlets with minor pyrite.
- 460'-469' Pink, fine-grained, fresh granite, very minor disseminated molybdenite, several 1/4" quartz veinlets, barren.
- 469'-478' Pink, medium- to coarse-grained, fresh biotite granite, no quartz veins and no mineralization.
- 478'-486' Pink, medium- to coarse-grained, fresh biotite granite, minor disseminated pyrite, several 1/2" quartz veinlets, barren.
- 486'-498' Pink, medium- to coarse-grained, fresh biotite granite, good amount of disseminated molybdenite, trace disseminated pyrite, no quartz veinlets.
- 498'-505' Pink, fine-grained, fresh granite, no quartz veins and no mineralization.
- 505'-515' Pink, fine-grained, fresh granite, minor disseminated molybdenite.
- 515' Hole bottomed.



4020
17°30"
BRINKLEYVILLE 1.3 MI.
4018
4017
4016000m N.
36°15'
77°52'30"

55' 238 239 INTERIOR—GEOLOGICAL SURVEY, RESTON, VIRGINIA—1977 241000m E.

ROAD CLASSIFICATION

- Primary highway, hard surface _____
- Secondary highway, hard surface _____
- Light-duty road, hard or improved surface _____
- Unimproved road _____
- Interstate Route ◻ U. S. Route ○ State Route

1 MILE



HOLLISTER, N. C.
N3615—W7752.5/7.5

1973

AMS 5456 IV SW—SERIES V842

(RINGWOOD)
5456 III NE

(Core logs and locations are available in a thesis by
B.W. Harvey, "The microscopic Petrography of the Boy Scout-Jones
Molybdenum Prospect, Halifax Co., N.C."
North Carolina State University, Raleigh, N.C.)

HA-C-6-XX

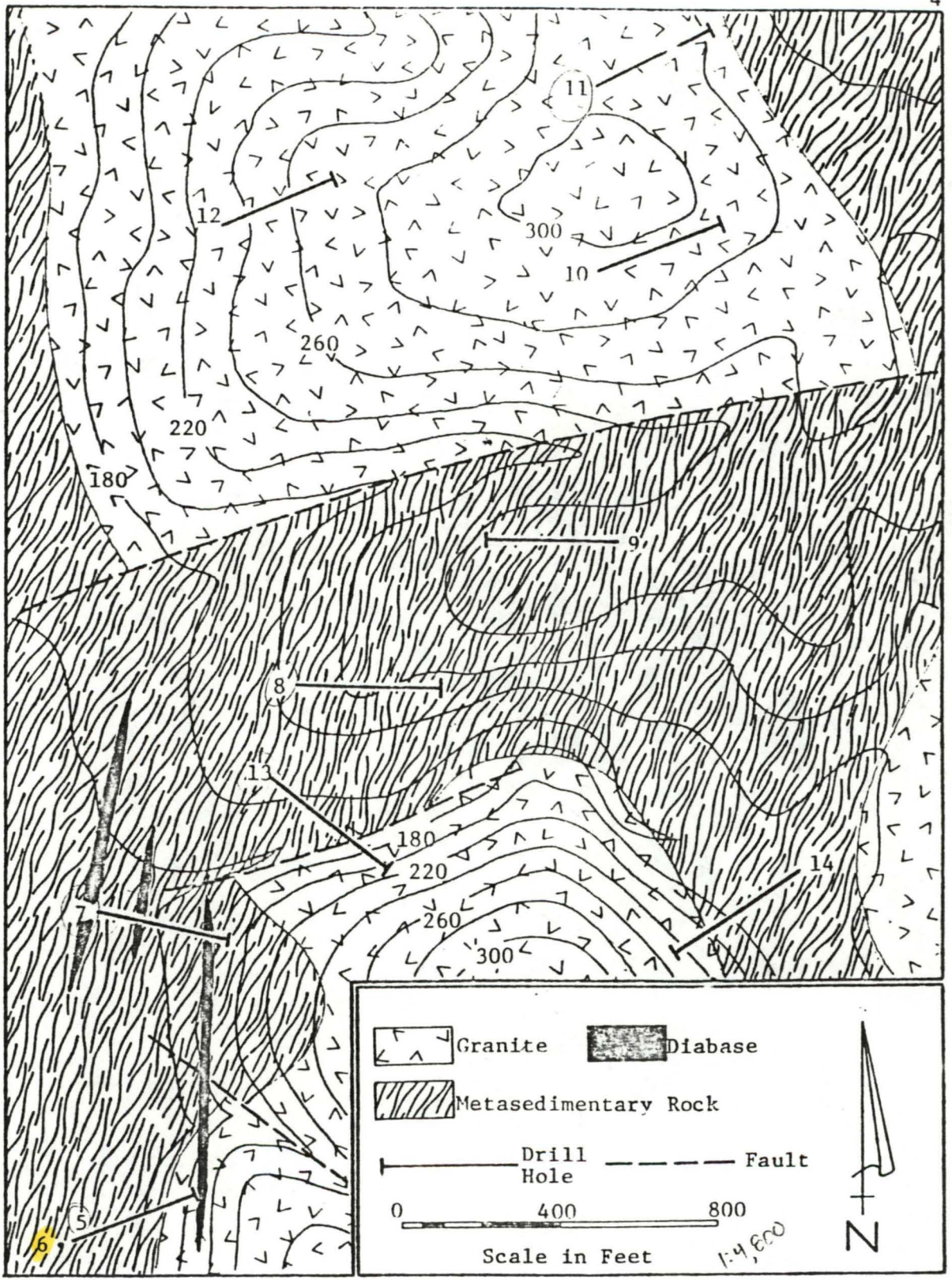


Figure 2. Geologic Map of the Boy Scout-Jones Molybdenum Prospect Showing Location of Drill Holes (from Bear Creek Mining Company).

FROM THESIS MENTIONED ON PREVIOUS PAGE.