

FROM: B.W. Harvey, "The microscopic Petrography of the Boy Scout-Jones
Molybdenum Prospect, Halifax Co., N.C."

North Carolina State University, Raleigh, N.C.)

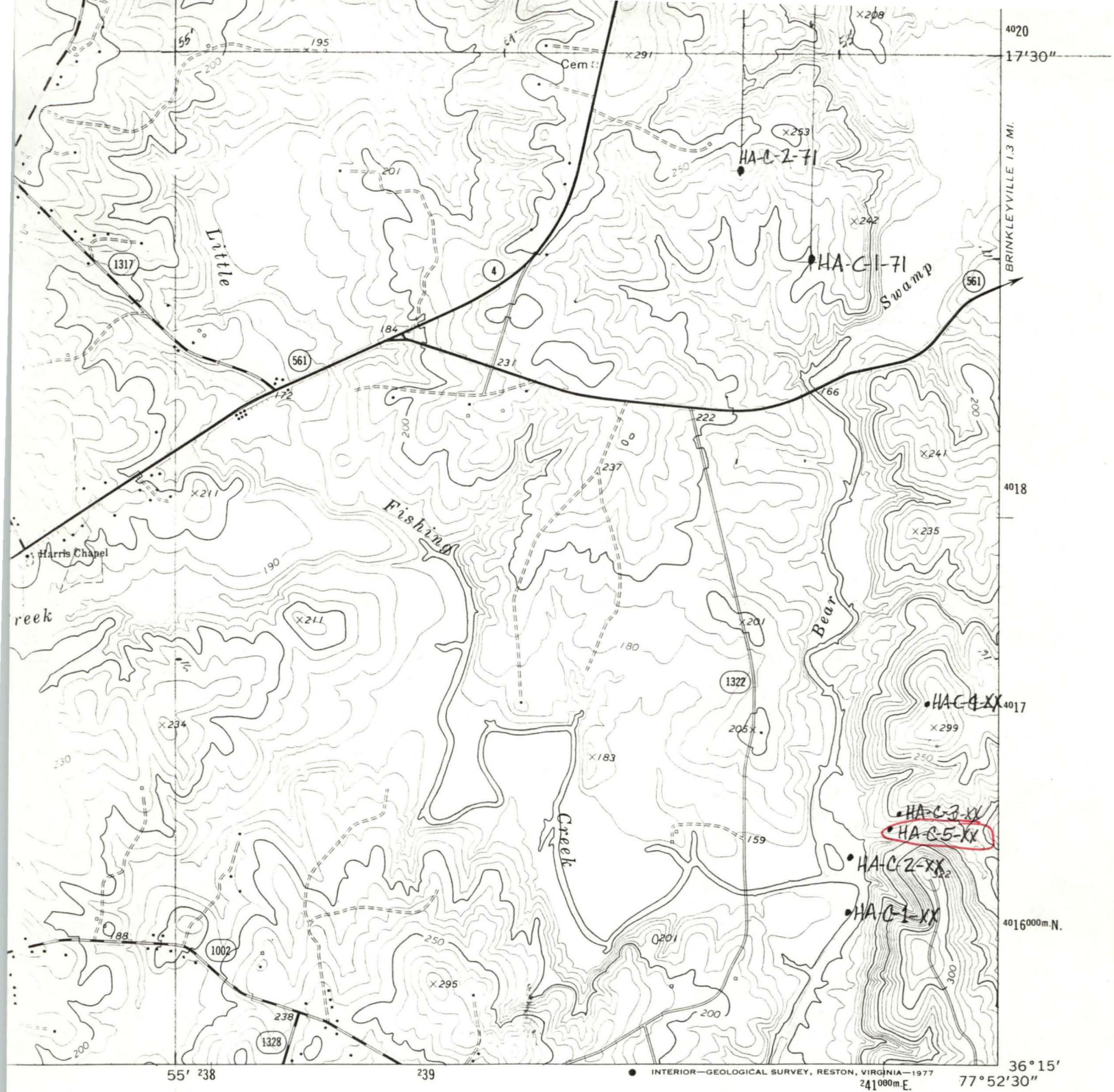
Drill Hole #13

HA-C-5-XX

Depth	Description
0'-13'	Overburden.
13'-22'	Dark green, siliceous, fine-grained argillite or tuff, heavily iron-stained.
22'-46'	Light gray, siliceous, fine-grained tuff, numerous 1/4" stringers of chlorite schist, minor disseminated pyrite in tuff.
46'-54'	Light gray, siliceous, slightly banded tuff, minor disseminated pyrite, one 1/2" quartz veinlet with minor pyrite, several 1/4" schist stringers.
54'-55'	Light pink, medium-grained granite, minor disseminated pyrite.
55'-84'	Light gray, siliceous tuff, numerous stringers of pink, medium-grained granite and light green fine-grained, chlorite schist, good disseminated pyrite throughout.
84'-104'	Light gray, siliceous tuff, minor disseminated pyrite and chalcopryite, numerous 1/2" to 1" quartz veinlets with minor pyrite.
104'-108'	Quartz vein, barren, but with numerous 1/4" granite stringers which contain minor disseminated pyrite.
108'-114'	Light gray, siliceous tuff, minor disseminated pyrite, numerous 1/2" quartz veinlets, barren.
114'-123'	Gray, siliceous tuff, abundant chlorite and epidote stringers, minor disseminated pyrite, several 1/4" quartz veinlets, barren.
123'-133'	Gray, siliceous tuff, minor disseminated pyrite, several dark red, medium-grained granite stringers, 10" quartz vein with good amount of pyrite and chalcopryite.
133'-153'	Gray, siliceous tuff, several dark red granite stringers, tuff slightly altered at granite stringer contacts, minor disseminated pyrite in tuff.
153'-156'	Quartz vein, minor pyrite and molybdenite.
156'-165'	Gray, siliceous tuff, slightly altered, several stringers of dark red granite, minor disseminated pyrite in tuff and granite.
165'-196'	Dark gray to black, banded tuff, minor disseminated pyrite, several 1/4" granite stringers, several 1" quartz vein, barren.

- 196'-199' Pink, fine-grained granite, fresh to slightly altered, trace disseminated pyrite.
- 199'-210' Dark gray to black, banded tuff or schist, good disseminated pyrite, several 1/4" dark red granite stringers with minor pyrite.
- 210'-224' Dark red, medium-grained, slightly altered granite, minor disseminated pyrite, several 1/2" quartz veinlets with minor pyrite and chalcopyrite.
- 224'-282' Dark red, medium-grained, moderately altered granite, minor disseminated pyrite and chalcopyrite, abundant 1/2" to 1" quartz veinlets with good amounts of pyrite, chalcopyrite, and molybdenite.
- 282'-291' Dark red, medium-grained, slightly altered granite, minor disseminated pyrite, numerous 1" quartz veinlets, barren.
- 291'-301' Dark pink, very fine-grained, slightly altered granite, numerous 1/4" to 1/2" quartz veinlets with traces of pyrite.
- 301'-310' Dark pink, fine-grained, moderately altered granite, minor disseminated pyrite, numerous 1/2" quartz veinlets with good amounts of pyrite and molybdenite.
- 310'-324' Dark pink to red, fine-grained granite, minor disseminated pyrite and excellent disseminated molybdenite.
- 324'-338' Dark red, medium-grained, moderately altered granite, minor disseminated pyrite, epidote along fractures.
- 338'-348' Dark red, medium-grained, moderately altered granite, minor disseminated pyrite, several 1" to 2" quartz veins with good pyrite, chalcopyrite, and molybdenite.
- 348'-358' Mixed interlayered stringers of dark red, fine- and coarse-grained granites, minor disseminated pyrite and chalcopyrite, several 1/2" quartz veinlets with good molybdenite.
- 358'-362' Quartz vein, good pyrite, chalcopyrite, and molybdenite.
- 362'-380' Dark red, fine-grained, moderately altered granite, minor disseminated pyrite, numerous 1" quartz veins with good pyrite, chalcopyrite, and molybdenite.
- 380'-404' Dark brownish-red, fine-grained, slightly altered granite, trace of disseminated pyrite and molybdenite, abundant 1" quartz veins with excellent molybdenite and trace of pyrite.
- 404'-413' Brown, fine-grained, slightly altered granite, minor disseminated pyrite and molybdenite.

- 413'-432' Dark brownish-red, fine-grained, slightly altered granite, no quartz veinlets and no mineralization.
- 432'-451' Dark brownish-red, fine-grained, slightly altered granite, several 1/4" quartz veinlets with minor pyrite and molybdenite.
- 451'-457' Dark brownish-red, fine-grained, slightly altered granite, several 1/4" quartz veinlets, barren.
- 457'-477' Dark brown, fine-grained, slightly altered granite, abundant sericite on fracture surfaces, numerous 1/2" quartz veinlets with good amounts of pyrite and molybdenite.
- 477'-488' Quartz vein, minor pyrite and molybdenite.
- 488'-500' Dark reddish-orange, fine-grained, fresh to slightly altered granite, trace of disseminated pyrite.
- 500' Hole bottomed.



HA-C-5-XX
N361535-W775250

ROAD CLASSIFICATION

- Primary highway, hard surface
- Secondary highway, hard surface
- Light-duty road, hard or improved surface
- Unimproved road
- Interstate Route
- U. S. Route
- State Route



C17
HOLLISTER, N.C.
 N3615-W7752.5/7.5

1973

AMS 5456 IV SW-SERIES V842

(RINGWOOD)
 5456 III NE

QUEST

HA-C-5-XX

(Core logs and locations are available in a thesis by
B.W. Harvey, "The microscopic Petrography of the Boy Scout-Jones
Molybdenum Prospect, Halifax Co., N.C."
North Carolina State University, Raleigh, N.C.)

HA-C-5-XX

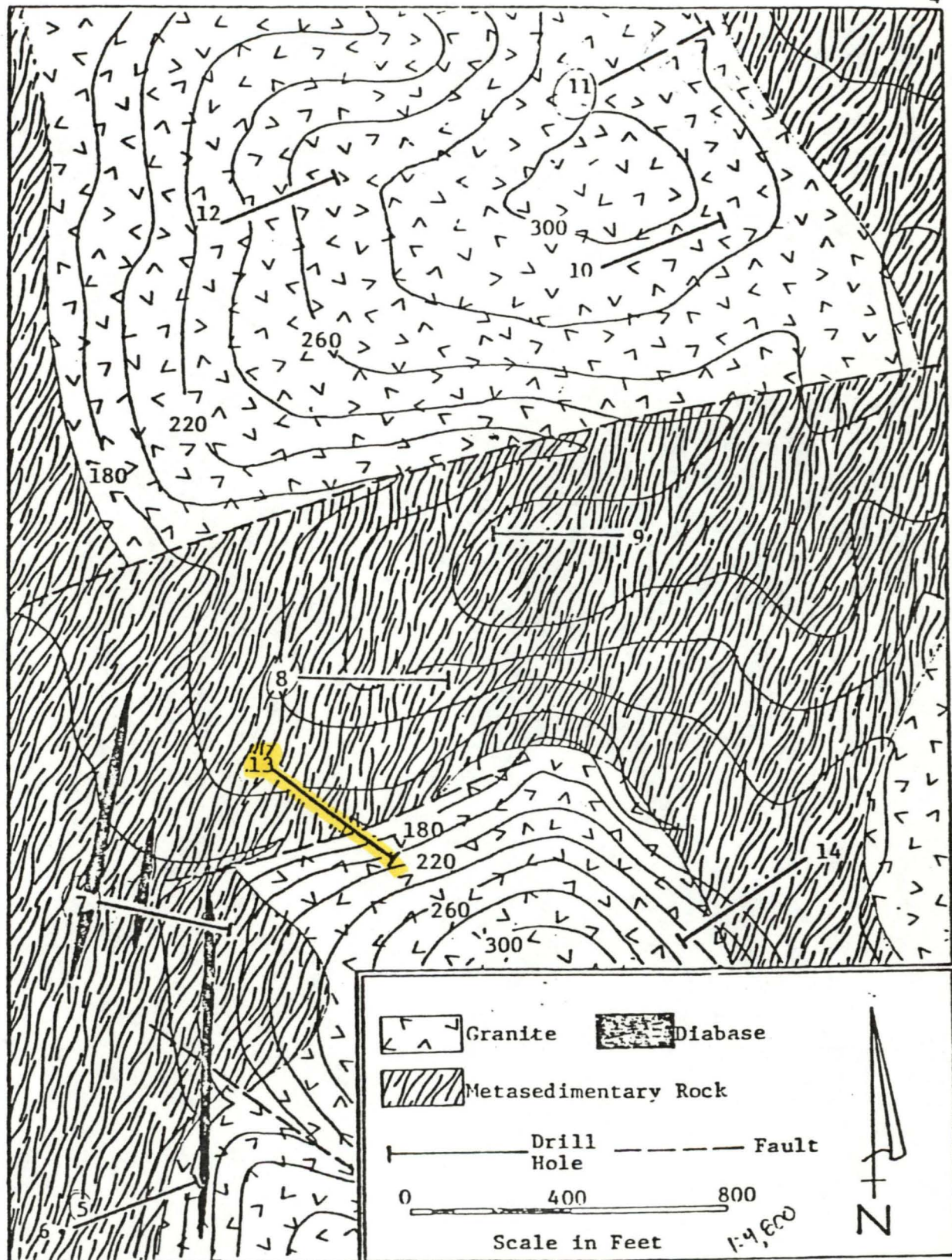


Figure 2. Geologic Map of the Boy Scout-Jones Molybdenum Prospect Showing Location of Drill Holes (from Bear Creek Mining Company).

FROM THESIS MENTIONED ON PREVIOUS PAGE.