

FROM:

B.W. Harvey, "The microscopic Petrography of the Boy Scout-Jones
Molybdenum Prospect, Halifax Co., N.C."

North Carolina State University, Raleigh, N.C.)

(THESIS)

HA-C-3-XX

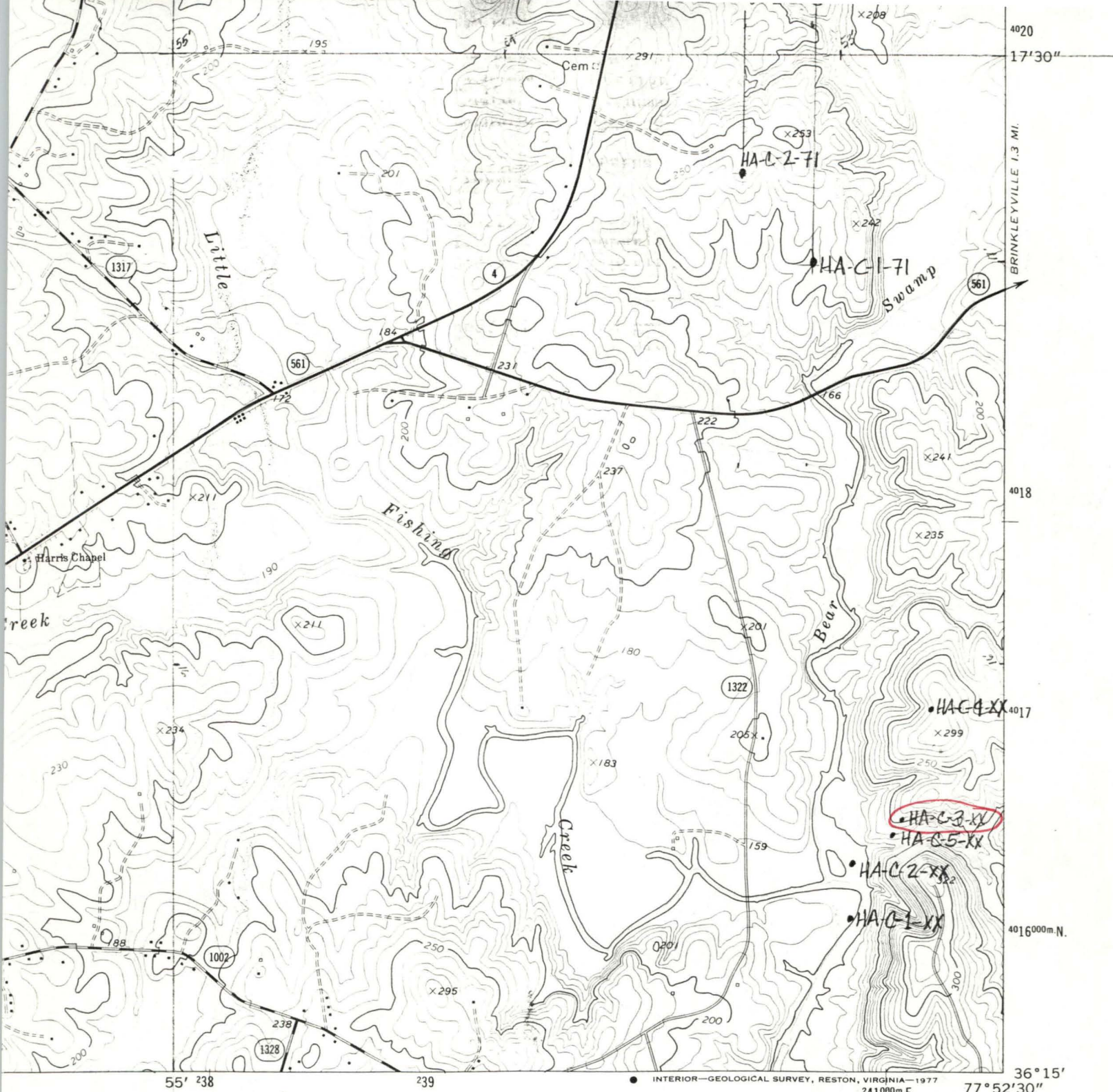
Drill Hole #8

Depth	Description
0'-27'	Overburden.
27'-35'	Medium gray, fine-grained tuff or argillite, good disseminated pyrite throughout.
35'-46'	Medium gray, banded tuff with interlayered chlorite schist, good disseminated pyrite.
46'-56'	Light gray, banded tuff with thin chlorite schist stringers, good disseminated pyrite.
56'-86'	Medium gray, banded and slightly silicified tuff, numerous chlorite schist stringers, good amount disseminated pyrite.
86'-96'	Medium gray, banded tuff with numerous chlorite schist stringers, several 1/4" quartz veinlets with traces of chalcopyrite and pyrite, good disseminated pyrite.
96'-106'	Medium gray, banded tuff with numerous chlorite schist stringers, slightly silicified appearance, good disseminated pyrite.
106'-116'	Medium gray, banded tuff with numerous chlorite schist stringers, several 1/2" quartz veinlets with minor pyrite, good disseminated pyrite.
116'-131'	Pink, fine-grained granite with abundant 1/2" quartz veinlets containing minor pyrite and chalcopyrite.
131'-136'	Dark gray to black, banded tuff, minor disseminated pyrite.
136'-145'	Dark gray to black, banded tuff, minor disseminated pyrite, several 1/4" quartz veinlets, barren.
145'-155'	Dark gray to black, banded tuff, 10" pink, medium-grained, biotite granite stringer in last 1' of interval, minor disseminated pyrite in tuff and granite.
155'-160'	Dark gray to black, banded tuff, minor disseminated pyrite, several 1/4" quartz veinlets with minor pyrite, chalcopyrite, and molybdenite.
160'-169'	Quartz vein, minor pyrite, chalcopyrite, and molybdenite.
169'-174'	Dark gray, banded and silicified tuff, minor disseminated pyrite.

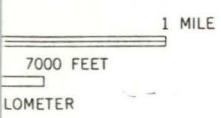
- 174'-183' Dark gray, banded and silicified tuff, minor disseminated pyrite, slightly altered locally.
- 183'-196' Dark gray, banded and silicified tuff, minor disseminated pyrite, moderately altered where more highly mineralized.
- 196'-201' Dark pink to red, fine-grained, fresh granite, no quartz veins and no mineralization.
- 201'-205' Dark pink to red, fine-grained, fresh granite, several 1/4" quartz veinlets, barren.
- 205'-211' Quartz vein, 11" granite stringer near bottom, vein contains minor chalcopyrite, minor pyrite disseminated in granite.
- 211'-218' Dark pink, fine-grained, fresh granite, no quartz veins and no mineralization.
- 218'-225' Quartz vein, minor pyrite and chalcopyrite.
- 225'-230' Light green, slightly altered tuff, abundant euhedral pyrite.
- 230'-258' Light green, slightly altered tuff, slightly banded, minor disseminated pyrite.
- 258'-262' Light green, moderately altered and banded tuff, minor disseminated pyrite.
- 262'-268' Quartz vein, minor pyrite and molybdenite.
- 268'-270' Light green, moderately altered, banded tuff, minor disseminated pyrite.
- 270'-277' Quartz vein, minor pyrite.
- 277'-296' Quartz vein with numerous granite or feldspar stringers, vein contains minor pyrite, chalcopyrite, and molybdenite.
- 296'-297' Dark pink, fine-grained, fresh, silicified granite, no quartz veins and no mineralization.
- 297'-307' Dark red, medium-grained, slightly altered granite, several 1/2" green tuff stringers, several 1/2" quartz veinlets with minor pyrite and molybdenite.
- 307'-317' Dark red, medium-grained, fresh biotite granite, 9" stringer of tuff in last 2' of interval, minor disseminated pyrite in granite.
- 317'-336' Dark green, banded, slightly brecciated tuff, moderately altered, good amount of disseminated pyrite.

- 336'-339' Dark pink, medium-grained, fresh biotite granite, good disseminated pyrite.
- 339'-345' Dark green, banded, moderately altered tuff, minor disseminated pyrite.
- 345'-355' Dark green, banded, slightly altered tuff, 8" granite stringer with migmatitic texture, minor disseminated pyrite.
- 355'-360' Dark green, banded, slightly altered tuff, several small granite stringers, minor disseminated pyrite.
- 360'-365' Pink, fine-grained, fresh granite, numerous 1/2" quartz veinlets with good amount of pyrite.
- 365'-380' Dark green, banded, slightly altered tuff, numerous granite stringers, good amount of disseminated pyrite in tuff.
- 380'-384' Brown, very fine-grained, silicified granite, trace disseminated pyrite.
- 384'-400' Pink, fine- to medium-grained, fresh granite with several 1/2" dark green tuff stringers, no quartz veins and no mineralization.
- 400'-416' Dark red, medium- to coarse-grained, slightly altered granite, trace of disseminated pyrite.
- 416'-420' Dark green, banded, slightly altered tuff, minor disseminated pyrite.
- 420'-424' Dark pink, medium-grained, slightly altered granite, minor disseminated pyrite.
- 424'-426' Quartz vein, barren.
- 426'-449' Dark pink, medium-grained, slightly altered granite, minor disseminated pyrite and molybdenite.
- 449'-468' Dark reddish-black, medium-grained, slightly altered biotite granite, numerous 1/2" quartz veinlets containing good amount of pyrite and chalcopyrite.
- 468'-478' Dark red, fine-grained, fresh to slightly altered granite, good amount disseminated pyrite, numerous quartz veinlets, barren.
- 478'-487' Dark red, fine-grained, slightly altered granite, minor disseminated pyrite.
- 487'-506' Dark red, fine-grained, slightly altered granite, no quartz veins and only a trace of disseminated pyrite.

- 506'-516' Dark red, medium-grained, slightly altered granite, trace of disseminated pyrite.
- 516'-525' Dark red, medium-grained, slightly altered granite, several 1/2" quartz veinlets with traces of pyrite.
- 525'-535' Dark red, fine- to medium-grained, very slightly altered granite, minor disseminated pyrite.
- 535'-539' Quartz vein, good amount of pyrite and chalcopyrite.
- 539'-544' Dark red, fine-grained, slightly altered granite, trace disseminated pyrite and molybdenite.
- 544'-573' Dark pink to brown, fine-grained, fresh, silicified granite, minor disseminated pyrite and chalcopyrite, abundant 1/2" quartz veinlets with good amount of pyrite, several 1/2" feldspar stringers.
- 573'-582' Light brown, fine-grained, silicified granite, several 1/2" quartz veinlets, mostly barren, minor disseminated pyrite.
- 582'-593' Quartz vein with numerous 1/2" to 1" bleached granite stringers, minor pyrite and molybdenite in quartz.
- 593'-631' Quartz vein with abundant bleached granite and feldspar stringers, very good pyrite and molybdenite in quartz.
- 631'-662' Quartz vein with abundant bleached granite and feldspar stringers, minor pyrite and molybdenite in quartz.
- 662'-679' Quartz vein with abundant bleached granite and feldspar stringers, very good pyrite and trace of molybdenite in quartz.
- 679'-702' Dark red, medium-grained, fresh to slightly altered biotite granite, minor disseminated pyrite, numerous 1/4" quartz veinlets with only a trace of pyrite, chlorite along fracture surfaces.
- 702' Hole bottomed.



HA-C-3-XX
N361537-W775248



QUADRANGLE LOCATION

ROAD CLASSIFICATION

- Primary highway, hard surface
- Secondary highway, hard surface
- Light-duty road, hard or improved surface
- Unimproved road
- Interstate Route
- U. S. Route
- State Route

C17
HOLLISTER, N. C.
 N3615-W7752.5/7.5

1973

AMS 5456 IV SW—SERIES V842

(RINGWOOD)
 5456 III NE

QUEST

HA-C-3-XX

(Core logs and locations are available in a thesis by
B.W. Harvey, "The microscopic Petrography of the Boy Scout-Jones
Molybdenum Prospect, Halifax Co., N.C."
North Carolina State University, Raleigh, N.C.)

HA-C-3-XX

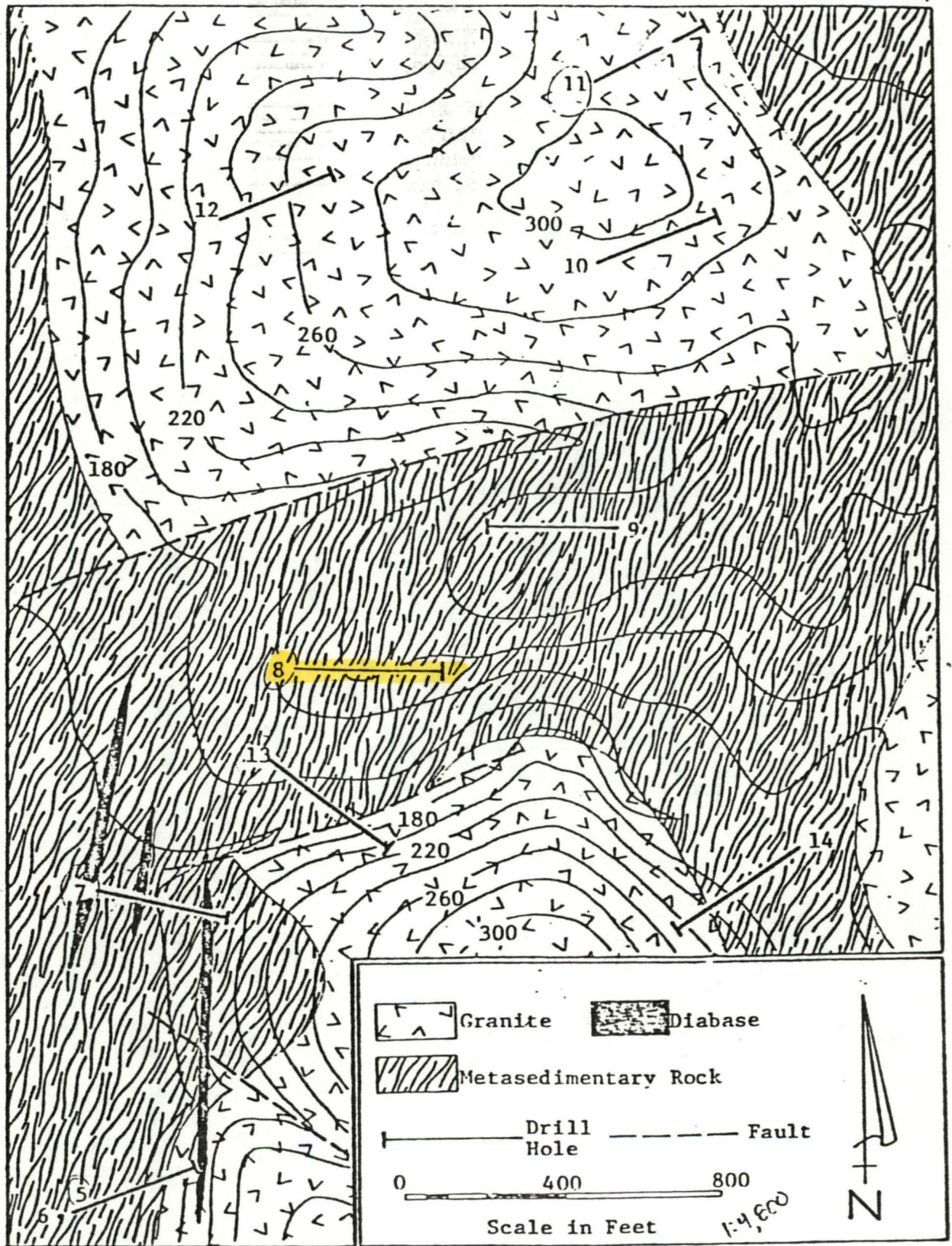


Figure 2. Geologic Map of the Boy Scout-Jones Molybdenum Prospect Showing Location of Drill Holes (from Bear Creek Mining Company).

FROM THESIS MENTIONED ON PREVIOUS PAGE.