

From: B.W. Harvey, "The microscopic Petrography of the Boy Scout-Jones
Molybdenum Prospect, Halifax Co., N.C."

North Carolina State University, Raleigh, N.C.)

(THESIS)

Drill Hole #7

HA-C-2-X

Depth

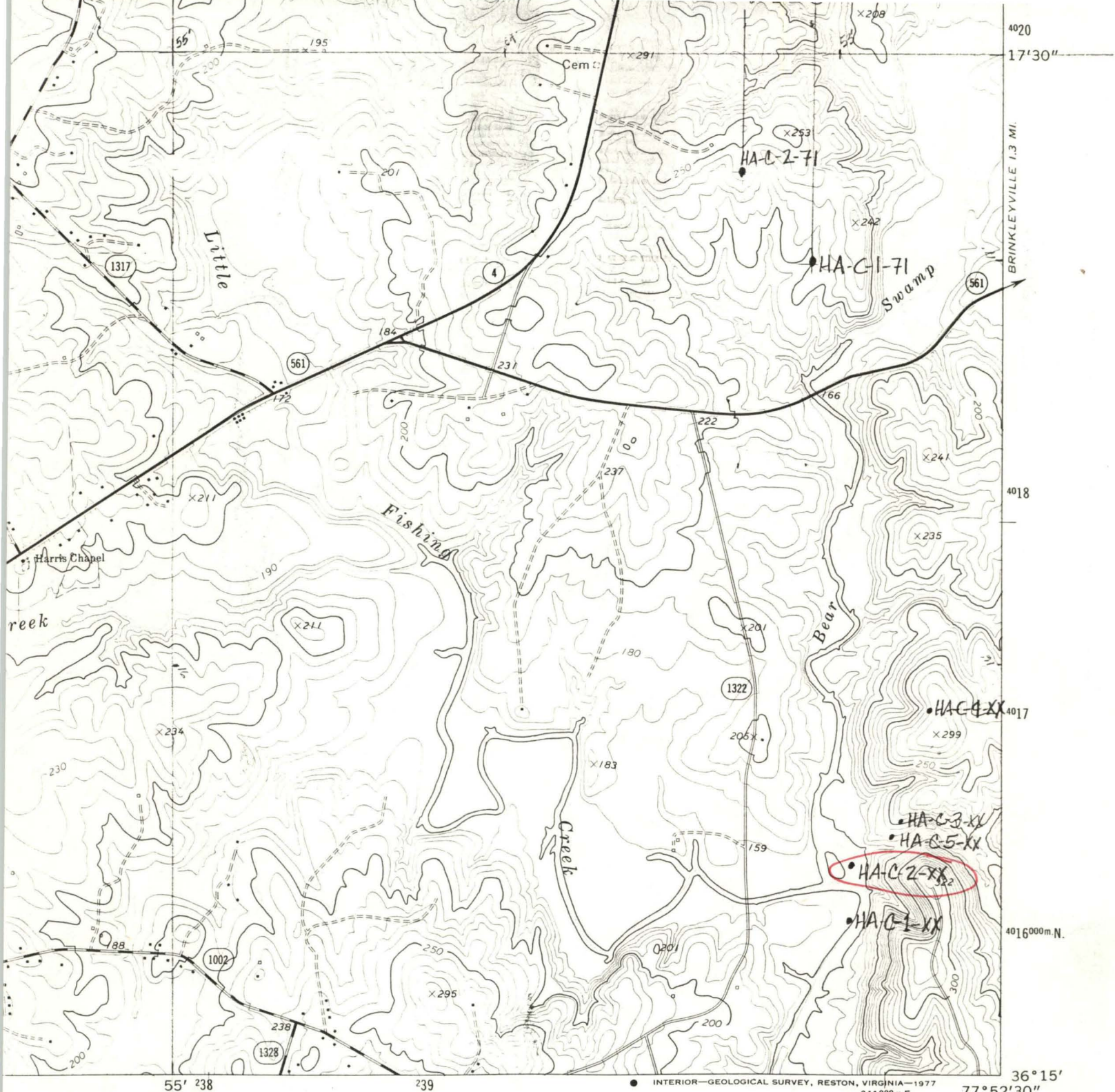
Description

HA-C-2-XX

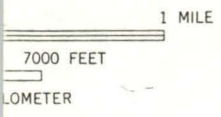
| | |
|-----------|-------------------------------------------------------------------------------------------------------------------------------------------------------------------------------------------------|
| 0'-11' | Overburden. |
| 11'-19' | Dark green to black, fresh, banded tuff, minor disseminated pyrite, minor chlorite stringers, some iron-staining along fractures. |
| 19'-28' | Dark green to gray, fresh, banded tuff, minor disseminated pyrite, chlorite along fractures. |
| 28'-38' | Dark green to gray, banded tuff, minor disseminated pyrite. |
| 38'-57' | Dark green to gray, banded tuff, minor disseminated pyrite, several 1/4" quartz veinlets. |
| 57'-75' | Dark green to gray, banded tuff, minor disseminated pyrite, several 1/4" quartz veinlets with traces of pyrite. |
| 75'-94' | Dark green to gray, banded tuff, minor disseminated pyrite. |
| 94'-113' | Dark green to gray, banded tuff, minor disseminated pyrite, several 1/2" quartz veinlets with traces of pyrite. |
| 113'-132' | Dark green to gray, banded tuff, minor disseminated pyrite, barren quartz veinlets filling minute fractures throughout. |
| 132'-151' | Dark green to gray, banded tuff, minor disseminated pyrite, several 1/4" quartz veinlets with traces of pyrite. |
| 151'-161' | Dark green to gray, banded tuff, minor disseminated pyrite, several 1/2" quartz veinlets with traces of pyrite and chalcopyrite. |
| 161'-171' | Dark green to gray, banded tuff, minor disseminated pyrite, several 1/4" quartz veinlets with traces of pyrite. |
| 171'-180' | Black, slightly altered, medium-grained diabase, talc or serpentine in fractures, chlorite stringers near bottom contact. |
| 180'-189' | Dark green to gray, banded tuff, minor disseminated pyrite, minor chlorite stringers, several 1/4" quartz veinlets with traces of pyrite, several thin, medium-grained, pink granite stringers. |
| 189'-198' | Dark green tuff, minor disseminated pyrite, several 1/2", medium-grained granite or feldspar stringers with minor disseminated pyrite. |

- 198'-208' Dark green, banded tuff, minor disseminated pyrite, several 1/2" quartz veinlets with minor amount of pyrite.
- 208'-218' Dark green, banded and slightly silicified tuff, minor disseminated pyrite, several 1/2" to 1" quartz veinlets, several 1/2" to 1" granite stringers.
- 218'-247' Dark green, banded and moderately silicified tuff, abundant quartz, feldspar, and granite stringers, minor disseminated pyrite throughout.
- 247'-256' Dark green, banded and moderately silicified tuff, numerous granite stringers from 1/2" to 5" wide, several quartz veinlets with traces of pyrite.
- 256'-264' Dark green, banded and moderately silicified tuff, several 1/2" to 1" granite stringers with minor disseminated pyrite, several 1/2" quartz veinlets, barren.
- 264'-266' Pink, medium-grained, highly silicified granite, minor disseminated molybdenite, several 1/4" quartz veinlets with minor pyrite.
- 266'-275' Dark green, banded and moderately silicified tuff, numerous granite stringers from 1/2" to 10" wide, with very good pyrite cubes developed.
- 275'-280' Black, slightly banded tuff, minor disseminated pyrite, several 1/4" quartz veinlets, barren or with only a trace of pyrite.
- 280'-282' Quartz vein, several thin chlorite stringers, minor amount of pyrite.
- 282'-286' Black, slightly banded tuff, minor disseminated pyrite.
- 286'-290' Brown, silicified, slightly banded tuff, minor quartz veinlets with only a trace of pyrite.
- 290'-295' Dark green to black, banded tuff, minor disseminated pyrite, epidote and chlorite stringers, 1/4" quartz veinlet with trace of pyrite.
- 295'-304' Dark green to black, banded and silicified tuff, minor disseminated pyrite throughout, several 1/4" to 1" granite stringers.
- 304'-308' Black, banded and silicified tuff, minor disseminated pyrite and trace of disseminated molybdenite.

- 308'-313' Pink, medium-grained, moderately altered granite, several 1/2" quartz veinlets with minor pyrite and molybdenite.
- 313'-323' Light tan, fine-grained, moderately altered granite, abundant 1/2" quartz veinlets with good amount of molybdenite, minor molybdenite as paint on fractures in granite.
- 323'-332' Pink, medium-grained, slightly altered granite, abundant 1/2" to 1" quartz veinlets with little or no mineralization.
- 332'-336' Light tan to pink, medium-grained, slightly altered granite, highly siliceous appearance, several 1/4" quartz veinlets with traces of pyrite.
- 336'-339' Orange feldspar vein, 1" quartz vein with good pyrite and chalcopyrite.
- 339'-350' Light tan to pink, medium-grained, slightly altered granite, several 1" to 3" quartz veins with minor pyrite, chalcopyrite, and molybdenite.
- 350'-355' Light tan to pink, medium-grained, moderately altered granite, one 7" quartz vein with trace of molybdenite.
- 355'-364' Quartz vein, vuggy appearance, minor pyrite and molybdenite.
- 364'-368' Light tan medium-grained, slightly altered granite, very minor disseminated molybdenite.
- 368'-377' Tan to red, medium-grained, slightly altered granite, several 1/2" quartz veinlets with minor pyrite and molybdenite.
- 377'-387' Light brown to yellowish-brown, medium-grained, slightly altered granite, abundant 1/4" quartz veinlets with only a trace of molybdenite.
- 387'-394' Yellow-brown, medium-grained, slightly altered granite, several 5" to 8" quartz veins with traces of pyrite and molybdenite, excellent disseminated molybdenite.
- 394'-397' Quartz vein, minor pyrite and molybdenite.
- 397'-404' Tan, medium-grained, slightly altered granite, several 1/4" quartz veinlets, but no mineralization.
- 404'-416' Black, fine-grained, fresh to slightly altered diabase.
- 416'-550' Black, fine-grained, fresh diabase.
- 550' Hole bottomed.



HA-C-2-XX
N361531-W775257



ROAD CLASSIFICATION

| | |
|------------------------------------|----------------------------------------------|
| Primary highway, hard surface | Light-duty road, hard or improved surface |
| Secondary highway, hard surface | Unimproved road |

Interstate Route
 U. S. Route
 State Route

C17
HOLLISTER, N. C.
 N3615-W7752.5/7.5

1973

AMS 5456 IV SW-SERIES V842

QUEST

(RINGWOOD)
 5456 III NE

HA-C-2-XX

(Core logs and locations are available in a thesis by
B.W. Harvey, "The microscopic Petrography of the Boy Scout-Jones
Molybdenum Prospect, Halifax Co., N.C."
North Carolina State University, Raleigh, N.C.)

HA-C-2-XX

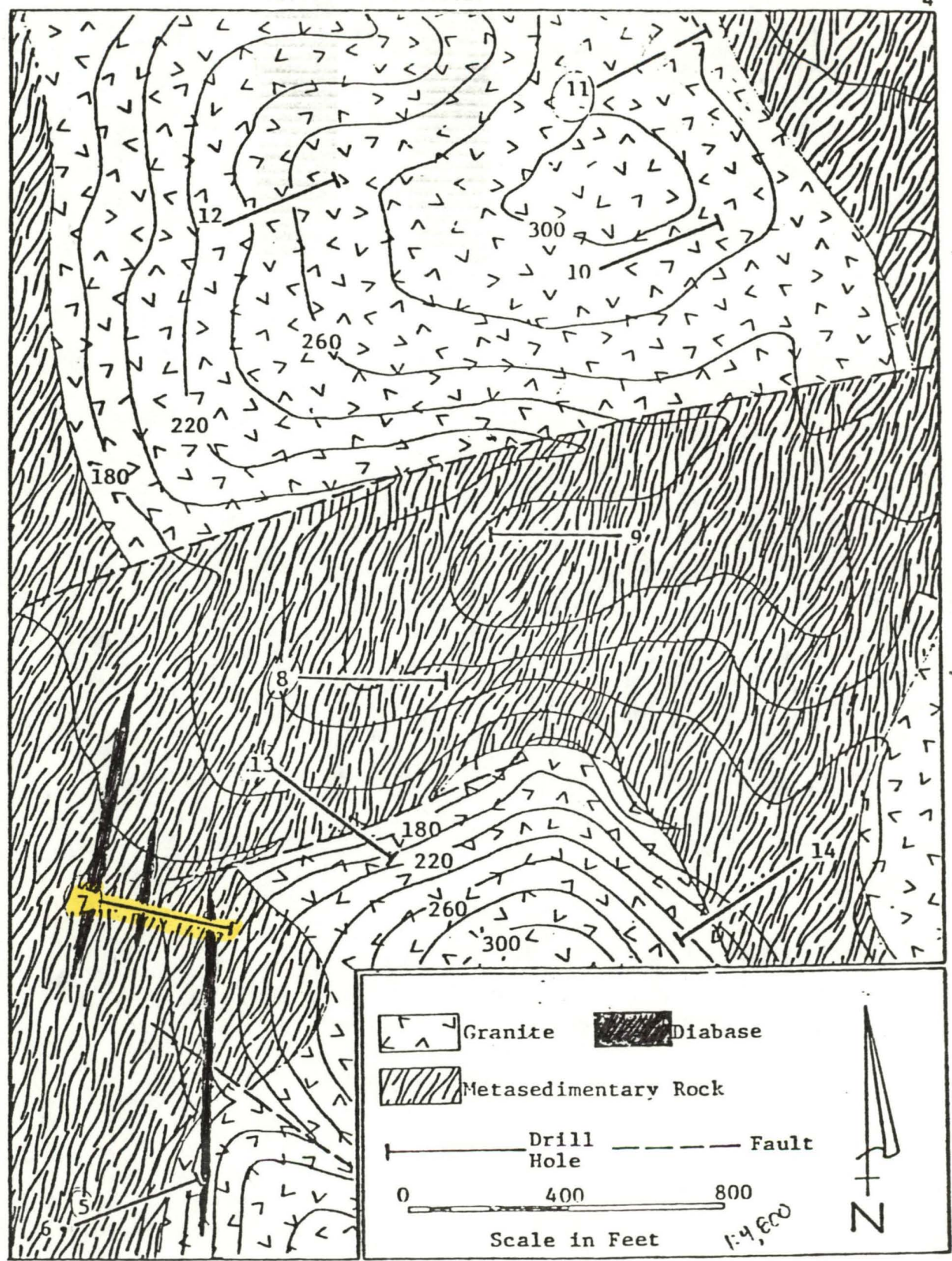


Figure 2. Geologic Map of the Boy Scout-Jones Molybdenum Prospect Showing Location of Drill Holes (from Bear Creek Mining Company).

FROM THESIS MENTIONED ON PREVIOUS PAGE.