

HA-C-2-71

58 BOXES

TOP-614

NC-7E

ELLIS MOLY. PROSPECT

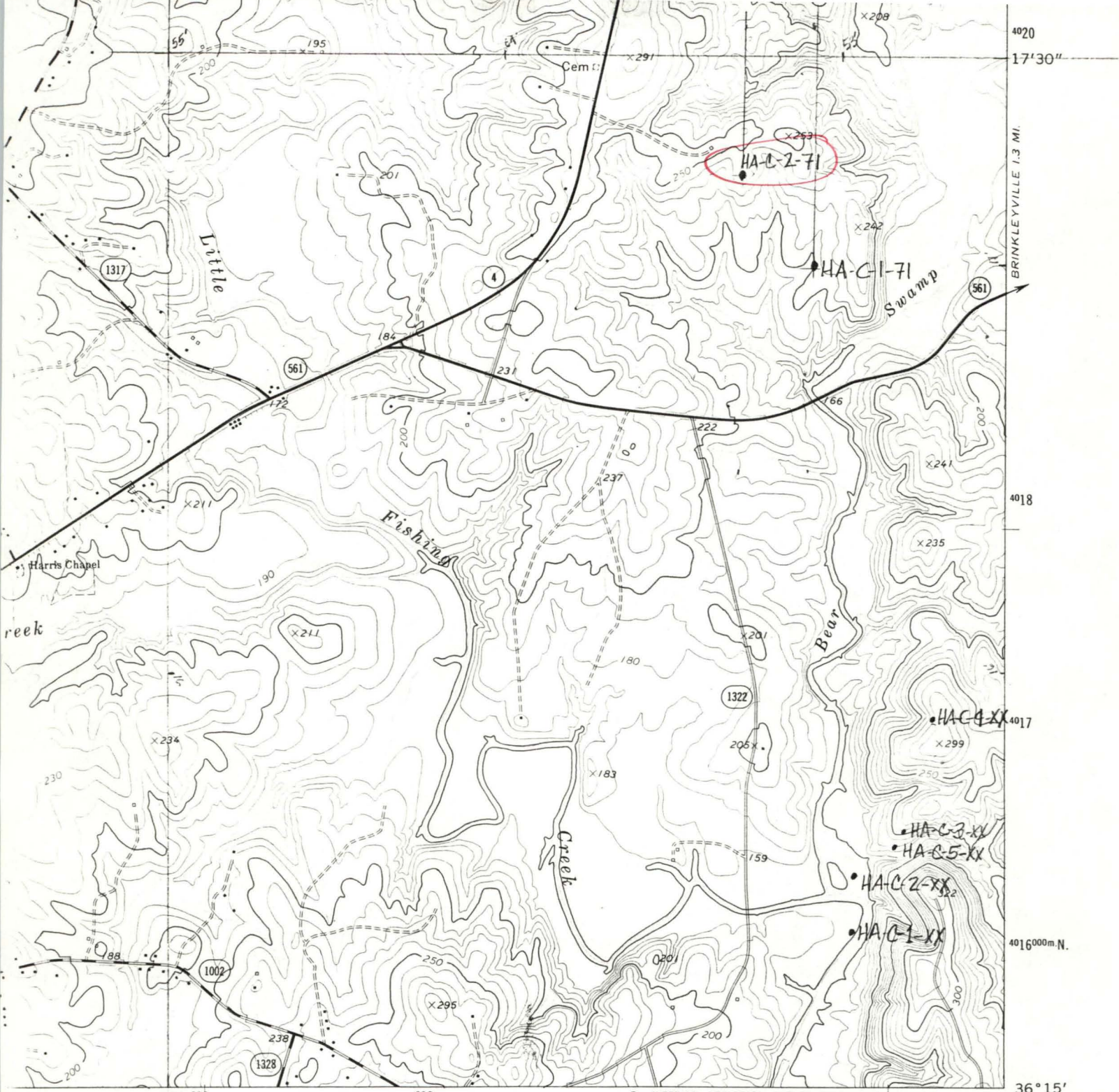
PERRY, KNOX, KAUFMAN

HALIFAX COUNTY NC

- TOP? WEATHERED MATERIAL THAT LOOKS LIKE WEATHERED MYLONITE
W/ IRON STAINS (IN FRACTURES ESPECIALLY)
- 51' MYLONITE W/ V. THIN RIBBONS OF GRANITIC MATERIAL & DISS. PY
- 60' SAME AS ABOVE
- 69' SAME MYLONITE W/ ONE OBVIOUS VEINLET OF GRANITIC MATERIAL
- 79' VERT DEFORMED MYLONITE W/ GRANITIC BANDS
- 89' MYLONITE W/ SMALL AMT. DISSEMINATED PYRITE
- 97' MYLONITE W/ CALCITE FILLED FRACTURES & DISS. PYRITE
- 106' MYLONITE W/ CALCITE VEINLETS (STILL DISS. PYRITE)
- 115' MYLONITE W/ WIDE BANDS OF APPARENTLY GRANITIC MATERIAL
- 125' MYLONITE W/ HIGH PERCENTAGE OF GRANITIC MATERIAL
- 136' MYLONITE W/ NO VISIBLE GRANITIC MATERIAL
- 145' MYLONITE W/ SMALL RIBBONS OF GRANITIC MATERIAL &
CALCITE FRACTURE FILLING & DISSEMINATED PYRITE
- 154' MYLONITE W/ DISS. PYRITE (NO APPARENT GRANITIC MATERIAL)
- 162' MYLONITE W/ LARGE AMTS OF GRANITIC MATERIAL, DISS. PYRITE,
AND CALCITE FRACTURE FILLING
- 171' SAME AS ABOVE
- 181' MYLONITE W/ MUCH LESS GRANITIC MATERIAL
- 190' GRANITIC MYLONITE W/ DISS. PYRITE
- 199' GRANITIC MYLONITE W/ LARGE AMT OF CALCITE
- 209' MYLONITE W/ DISS. PYRITE
- 217' SAME AS ABOVE
- 226' MYLONITE W/ CALCITE FRACTURE FILLED & DISS. PYRITE
- 236' MYLONITE W/ DISSEMINATED PYRITE
- 246' MYLONITE W/ SOME GRANITIC MATERIAL & DISS. PYRITE

- 256' MYLONITE W/ GRANITIC MATERIAL & LOTS OF CALCITE --
SOME DISSEMINATED PYRITE
- 264' MYLONITE W/ SOME GRANITIC MATERIAL & DISSEM. PYRITE
- 274' HIGHLY DEFORMED MYLONITE W/ CALCITE + DISS. PYRITE
- 283' HIGHLY FRACTURED MYLONITE W/ GRANITIC MATERIAL & DISS. PYRITE
- 291' MYLONITE W/ CALCITE FILLED FRACTURES & DISS PY
- 301' SAME AS ABOVE
- 310' MYLONITE W/ FRACTURES FILLED W/ CALCITE & DISS PY
- 319' HIGHLY FRACTURED MYLONITE W/ CALC. FILLED FRACTURES
AND DISSEMINATED PYRITE
- 329' MYLONITE W/ DISS. PYRITE (SUCKENSIDES)
- 339' MYLONITE W/ PYRITE
- 350' V. GRANITIC MYLONITE W/ DISS. PYRITE
- 360' SAME AS ABOVE
- 370' MYLONITE W/ V. LITTLE GRANITIC MATERIAL
- 380' SAME AS ABOVE
- 391' GRANITIC MYLONITE W/ DISS. PYRITE (MOLY?)
- 403' GRANITIC MYLONITE W/ DISS. PYRITE & MOLY
- 414' SAME AS ABOVE
- 424' GRANITIC MYLONITE W/ DISS. PYRITE (MOLY?)
- 436' SAME AS ABOVE
- 447' GRANITIC MYLONITE W/ V. LITTLE IF ANY DISS. PYRITE
- 459' GRANITIC MYLONITE W/ CALC. FRACTURE FILLING &
GOOD AMT OF DISS. PYRITE
- 470' SAME AS ABOVE
- 478' QRTZITE VEIN W/ DISS PYRITE
- 493' GRANITIC MYLONITE W/ DISS. PYRITE

- 505' GRANITIC MYLONITE W/SOME DISSEMINATED PYRITE
- 517' GRANITIC MYLONITE W/V. LITTLE PYRITE & SOME IRON STAIN
- 527' MYLONITE W/ GRANITIC MATERIAL + QUARTZITE W/TALC/SERICITE
ALONG FRACTURES
- 529' GRANITIC MYLONITE W/V. GOOD AMOUNT MOLY W/ SOME
DISSEMINATED PYRITE
- 542' GRANITIC MYLONITE W/ DISS. PYRITE
- 546' GRANITIC & QUARTZITE MYLONITE W/ CALSITE VENULET & PYRITE
- 564' MAINLY GRANITIC MYLONITE W/ LOTS OF QUARTZITE & SOME
DISSEMINATED PYRITE
- 576' SAME AS ABOVE W/EVEN MORE QUARTZITE & PYRITE
- 588' GRANITIC MYLONITE W/MORE MAFIC MATERIAL
- 602' GRANITIC MYLONITE W/ DISSEMINATED PYRITE
- 613' GRANITIC MYLONITE W/DISS. PYRITE
- 614' HOLE BOTTOMED



• INTERIOR—GEOLOGICAL SURVEY, RESTON, VIRGINIA—1977
241000m.E.

ROAD CLASSIFICATION

- Primary highway, hard surface
- Secondary highway, hard surface
- Light-duty road, hard or improved surface
- Unimproved road
- Interstate Route
- U. S. Route
- State Route

1 MILE
7000 FEET
METER



HA-C-2-71
N361714-W775317

C17
HOLLISTER, N.C.
N3615—W7752.5/7.5
1973

(RINGWOOD)
5456 III NE