

DV-C-4-76

33 BOXES

19'-334

C-2+3 (76-2)

PHELPS DODGE

- 28' FN. GN. BEDDED TUFF W/ SMALL AMTS. DISSEM. PYRITE
- 37' BEDDED TUFF W/ GREEN STAIN (FE); ALSO CONTAINS TINY HOLES ALONG PLANES OF BEDDING WHERE PYRITE (OR LIMONITE) MAY HAVE WEATHERED OUT.
- 47' MUCH COARSER SEQUENCE OF METAVOLCANICS (TUFACEOUS) W/ DISP FOLLOWED BY (47.5') FINER VOLCANICS THAT ARE BEDDED W/ PYRITE FOUND ALONG BEDS.
- 54' BEDDED METASEDS (MIXED W/ SOME VOLCANIC MATERIAL?) -- DISSEMINATED PYRITE; LOOKS LIKE SOME SOFT-SED DEFORMATION W/ SOME SCOUR (?) MARKS.
- 68' FN. GN. METAVOL. TUFF W/ BANDS BEARING PYRITE
- 78' LOOKS SEDIMENTARY AGAIN B/C OF STRUCTURES IN BEDDING; PYRITE OCCURS ALONG BEDDING
- 88' BEDDED METAVOLCANIC TUFF W/ PYRITE OCCURRING ALONG THE BEDS
- 97' FN GN METAVOLCANIC W/ BANDS OF PYRITE ALONG BEDDING PLANES
- 107' MED. GR METAVOLCANIC THAT IS MUCH MORE COARSE THAN ABOVE MATERIAL.
- 116' MED - COARSE GR METAVOL W/ LITHOFRAGS
- 126' COARSE METAVOLCANIC W/ LARGE LITHOFRAGS.
- 134' FN GN METAVOLCANIC W/ CALCITE VEINLETS
- 143' FN GN METAVOL W/ SOME BEDDING & PYRITE
- 155' FN GN METAVOL W/ DISS. PYRITE
- 165' FN. GN. BEDDED METAVOLCANIC
- 174' FN GN METAVOL (BEDDED) W/ PYRITE ALONG BEDDING PLANES
- 183' FN. GN. METAVOL. MATERIAL W/ INTERBEDDED PYRITE

- 193' THIN BEDS OF METAVOL MATERIAL (FN GN) W/ PYRITE.
- 204' FN GR METAVOL GETTING COARSER APPROACHING 205'.
- 211' COARSE METAVOL W/ LARGE LITHOFRAGS
- 223' FN, GN, BEDDED VOLCANIC W/ DISS. PYRITE
- 231' FN, BEDDED VOLCANIC W/ DISSEMINATED PYRITE
- 243' FN GN, BEDDED METAVOL
- 252' V. F. METAVOL IN CONTACT W/ MED - & COARSE MATERIAL  
W/ SMALL LITHOFRAGS
- 255' COARSE METAVOLCANIC W/ LITHOFRAGS
- 272' MED - & COARSE METAVOL W/ SMALL LITHOFRAGS
- 281' COARSE METAVOLCANIC W/ LARGE LITHOFRAGS
- 282' COARSE METAVOL MAKES ABRUPT TRANSITION TO VERY  
FINE METAVOL MATERIAL W/ QTZ VENELET
- 291' V. FN METAVOL W/ DISSEMINATED PYRITE
- 301' FN, GN BEDDED <sup>META</sup> VOLCANIC W/ PYRITE OCCURRING ALONG BEDS
- 310' SAME AS ABOVE
- 319' FN - & MED. GR VOLCANIC W/ LITHOFRAGS & LOTS OF FLOW STRUCT.
- 330' MED. GR. METAVOLCANIC W/ DISSEMINATED PYRITE
- 333' MED + FN GR MATERIAL INTERWORKED W/ LARGE LITHOFRAGS  
OF FN IN MED & MED IN FN.

DV-C-4-76

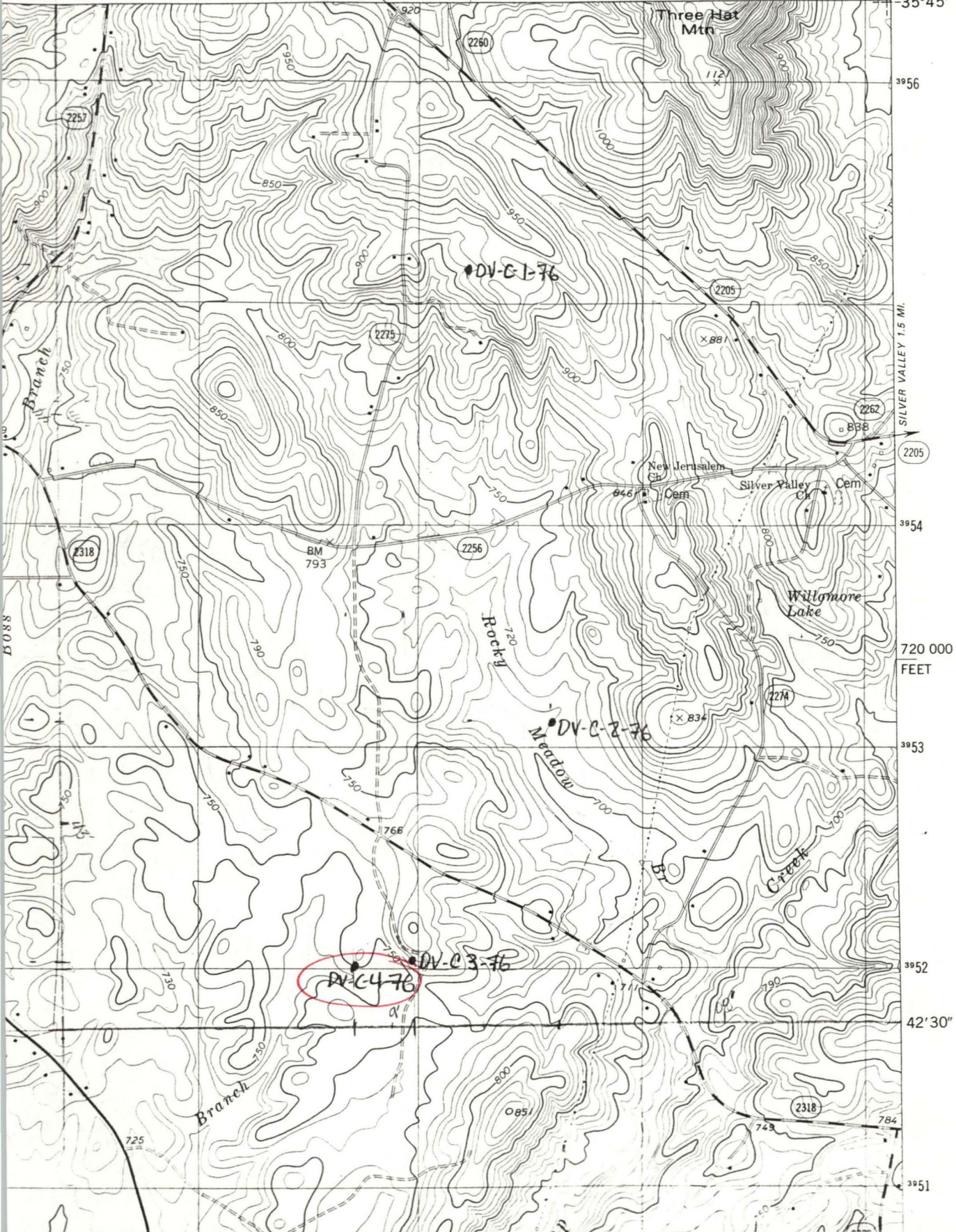
N354239-W800906

GRIST MOUNTAIN QUADRANGLE  
NORTH CAROLINA-DAVIDSON CO.  
7.5 MINUTE SERIES (TOPOGRAPHIC)

NW/4 DENTON 15' QUADRANGLE

4995 1 SE  
(FAIR GROVE)

10'      976      LEXINGTON 8 MI.  
HEDRICK GROVE 2.3 MI.      977      1 660 000 FEET      978      80°07'30"



35°45'

3956

SILVER VALLEY 1.5 MI.

2205

3954

720 000  
FEET

3953

3952

42'30"

3951