

DV-C-3-76

20 BOXES

15' - 205'

S-2+3 (76-1)

PHELPS DODGE

- 23' MED. GRAINED FELSIC METAVOLCANIC
- 34' FN. GRN. METAVOLCANIC BK. IN LAYERS W/ FLOW STRUCTURES
- 45' FN. GN. METAVOLCANIC W/ YELLOW CAST (FE?)  
OF FEORS
- 54' FN GN METAVOLCANIC W/ SAME YELLOW TINT; LARGE  
QZ VEINLET
- 63' SAME AS ABOVE W/OUT QZ VEINLET
- 73' FN GR METAVOLCANIC
- 83' MED. GR. METAVOLCANIC W/ SMALL LITHOFRAGS.
- 93' SAME AS ABOVE
- 104' COARSE GN METAVOLCANIC
- 112' COARSE GR. W/ LITHOFRAGS
- 121' COARSE GR METAVOLCANIC W/ LITHOFRAGS.
- 123' COARSE METAVOLCANICS IN CONTACT W/ MUCH FINER GRAINED MATERIAL  
BIOTITE AND DISSEMINATED PYRITE
- 141' \*<sup>BEDDED</sup> FINE GR. METAVOLCANIC W/ PYRITE FOLLOWING THE BEDS
- 149' SAME AS ABOVE W/ INTERWORKED CALCITE
- 161' MED. GR VOLCANIC W/ DISSEM. PYRITE; LOTS OF MUSCOVITE
- 171' SAME AS ABOVE W/ MORE PYRITE
- 180' MED. GR. METAVOLCANIC W/ LITHOFRAGS & DIS. PYRITE (FINER GR  
THAN ABOVE).
- 190' MED. GR METAVOLCANICS TO FN GN AT 190.5'
- 199' ALTERNATING BANDS OF FN + MED - & COARSE METAVOL MATERIAL
- 201' SAME ALTERNATING BANDS, BUT W/ PYRITE



DV-C-3-76

N354240-W800856

**GRIST MOUNTAIN QUADRANGLE**

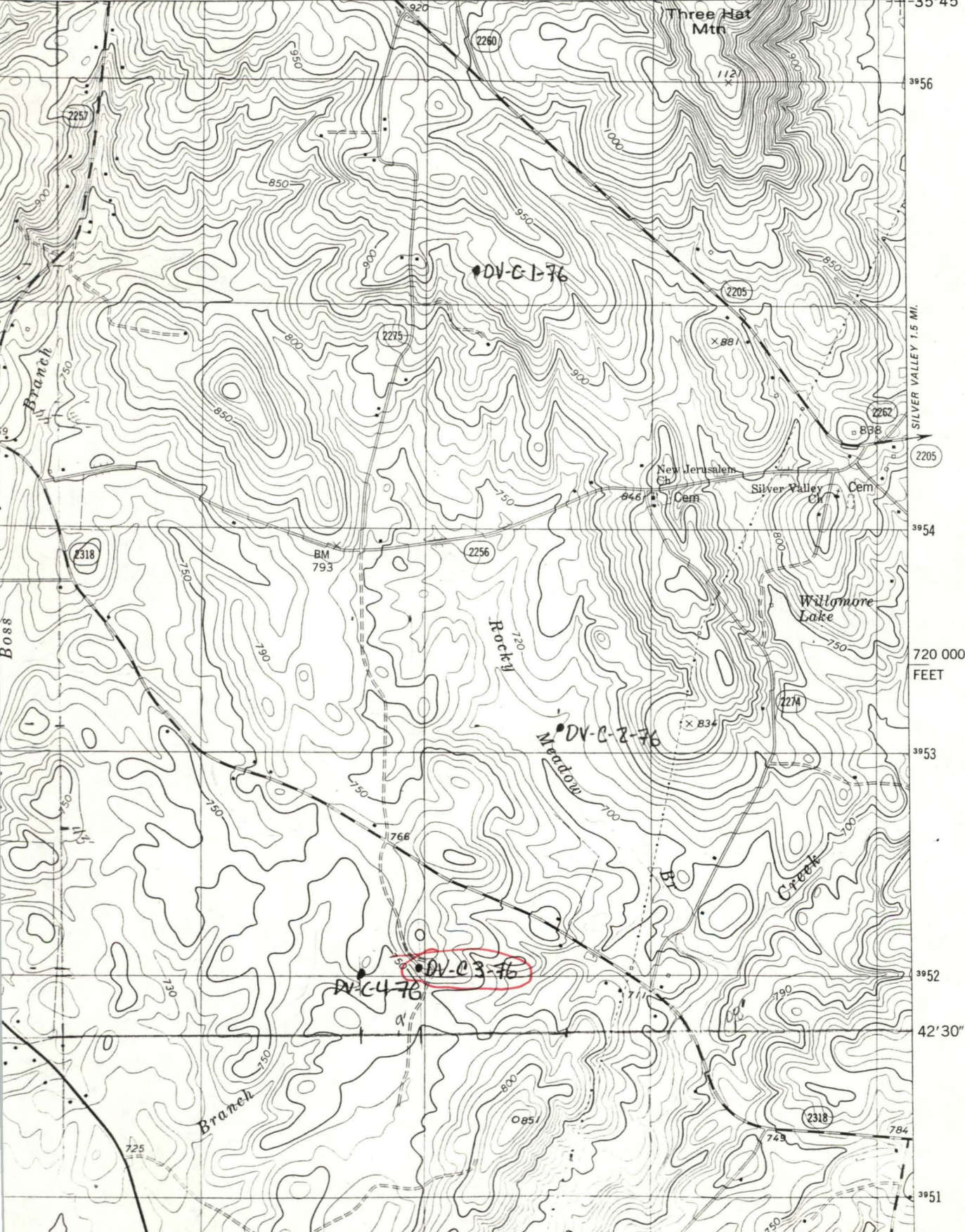
NORTH CAROLINA-DAVIDSON CO.

7.5 MINUTE SERIES (TOPOGRAPHIC)

NW/4 DENTON 15' QUADRANGLE

4955 1 SE  
(FAIR GROVE)

10' 576 LEXINGTON 8 MI. HEDRICK GROVE 2.3 MI. 577 1 660 000 FEET 578 80°07'30"



DV-C-1-76

DV-C-2-76

DV-C-3-76

DV-C-4-76

SILVER VALLEY 1.5 MI.

720 000 FEET

42'30"

39°51'