

DV-C-2-76

30 BOXES

11'-267'

S-2A

*(BOXES 10-20 MISSING)

PHIELDS DODGE

15' MED. GR. METAVOLCANIC (OOLITIC?)

30' FINE GR. METAVOLCANIC W/ SMALL LITHOFRAGS

40' SAME AS ABOVE W/ SOME CALCITE

56' FN GN METAVOLCANIC

69' FN GN METAVOLCANIC (SOME MED. GR IN BANDS)

78' FN GN METAVOL W/ SMALL LITHOFRAGS

87' FN ~~S~~ MED GN METAVOL W/ VISIBLE LAYERS/BANDS OF EACH

* GAP FROM 98' ALTERNATING BANDS OF FINE + MED GRAINED METAVOL MATERIAL

98'-208'

215' COARSE GR. METAVOLCANIC W/ LITHOFRAGS

226' MORE COARSE METAVOLS W/ LARGE LITHOFRAGS

237' MORE OF SAME AS ABOVE

247' COARSE METAVOL MATERIAL W/ RELATIVELY LRG LITHOFRAGS

255' MED GR. METAVOL W/ FLOW STRUCTURES

265-266' QZ VEN (SMALL AMT. CALC) W/ RENORDED METAVOL MATERIAL IN THE VEN.

275' MED. GN^{meta} VOLCANIC MATERIAL W/ SMALL BLEBS OF CALC.

284' MED. GR. METAVOLC. W/ DISSEMINATED PYRITE

295' MED. GN. METAVOL W/ DIS. PYRITE (MORE THAN ABOVE)

304' (HOLE BOTTOMED)

DV-C-2-76

N354316-W800830

GRIST MOUNTAIN QUADRANGLE

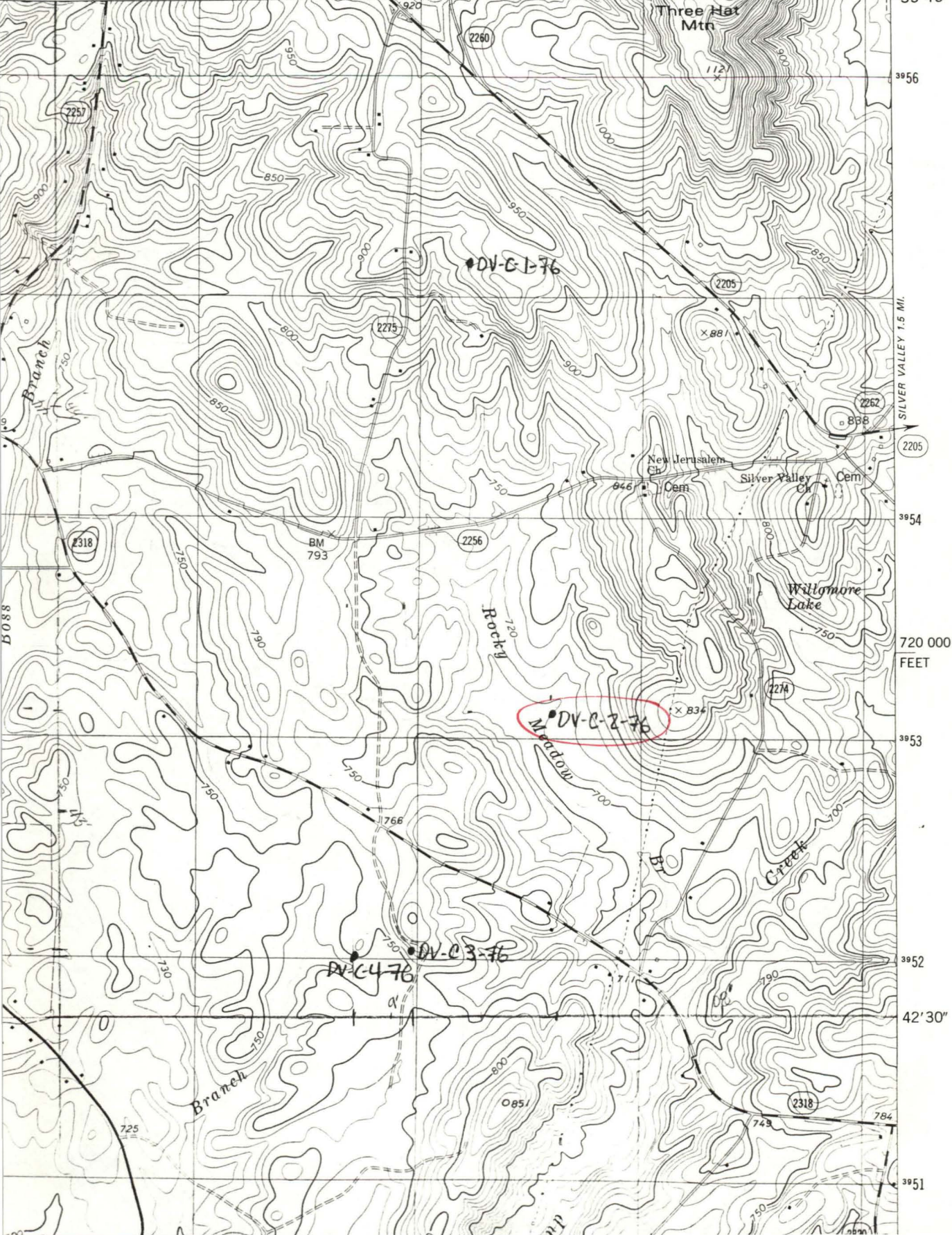
NORTH CAROLINA-DAVIDSON CO.

7.5 MINUTE SERIES (TOPOGRAPHIC)

NW/4 DENTON 15' QUADRANGLE

4955 1 SE
(FAIR GROVE)

10' 976 LEXINGTON 8 MI. HEDRICK GROVE 2.3 MI. 977 1 660 000 FEET 978 80°07'30" 35°45'



SILVER VALLEY 1.5 MI.

720 000 FEET

42' 30"

3951