

SAMPLE DESCRIPTION

Well # DU-A-2-83 TD 70 Examined by: BH Date 11/14

p. 1 of 1

Key: A - Abundant C - Common M - Minor T - Trace R - Rare X - Major Constituent

Interval	Rock Type	Color	Texture			Quartz	Feldspar	Glauconite	Phosphate	Calcite	Shell Frags	Mica	Pyrite	Lignite	Chalcedony	Amethyst	Rose Quartz	Tourmaline	Siderite	Limestone	Dolomite	M. Fossils	Fe-Stain	Remarks	
			Grain Size	Grain Shape	Sorting																				
25/30	Sst		med	shang	med	X	T				M	T	T												
30/35		A/A																							
40/45		A/A																							
45/50	dy Sst		m	shang	med	X	T				M	T	C								M			Sample of higher activity	
50/55	dy CI		fn	ang			A				M	C	C											high activity on log	
55/60	Sst		m	ang	med	X	R				M	M	M								T				
60/65	same as	50/55																						"C"	
65/70	same as	55/60						R													C				

G E O P H Y S I C A L L O G

NORTH CAROLINA GEOLOGICAL SURVEY SECTION

Well Code: DU-A-2-83 X-Ref: _____ Date Drilled: 10/4/83 Date Logged: 10/4/83

County: Duplin Latitude: 351025 Longitude: 780726 Elevation: 145 ft. (MSL) TD 70 ft.

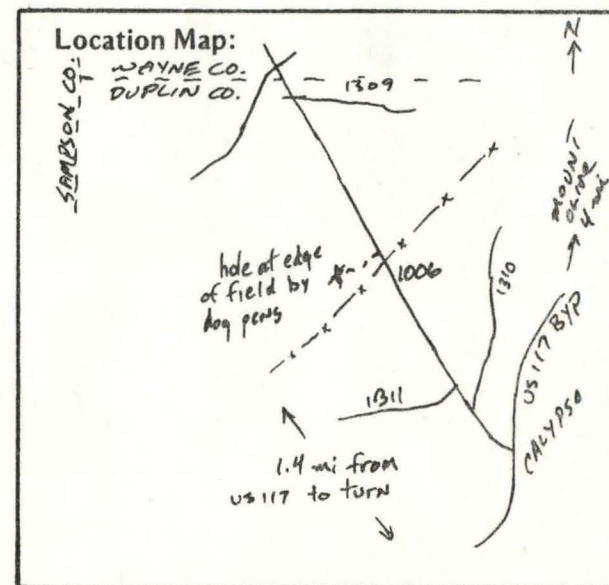
Owner: N/A Driller: NCGS (B. Hoffman) Borehole Fluid: N/A

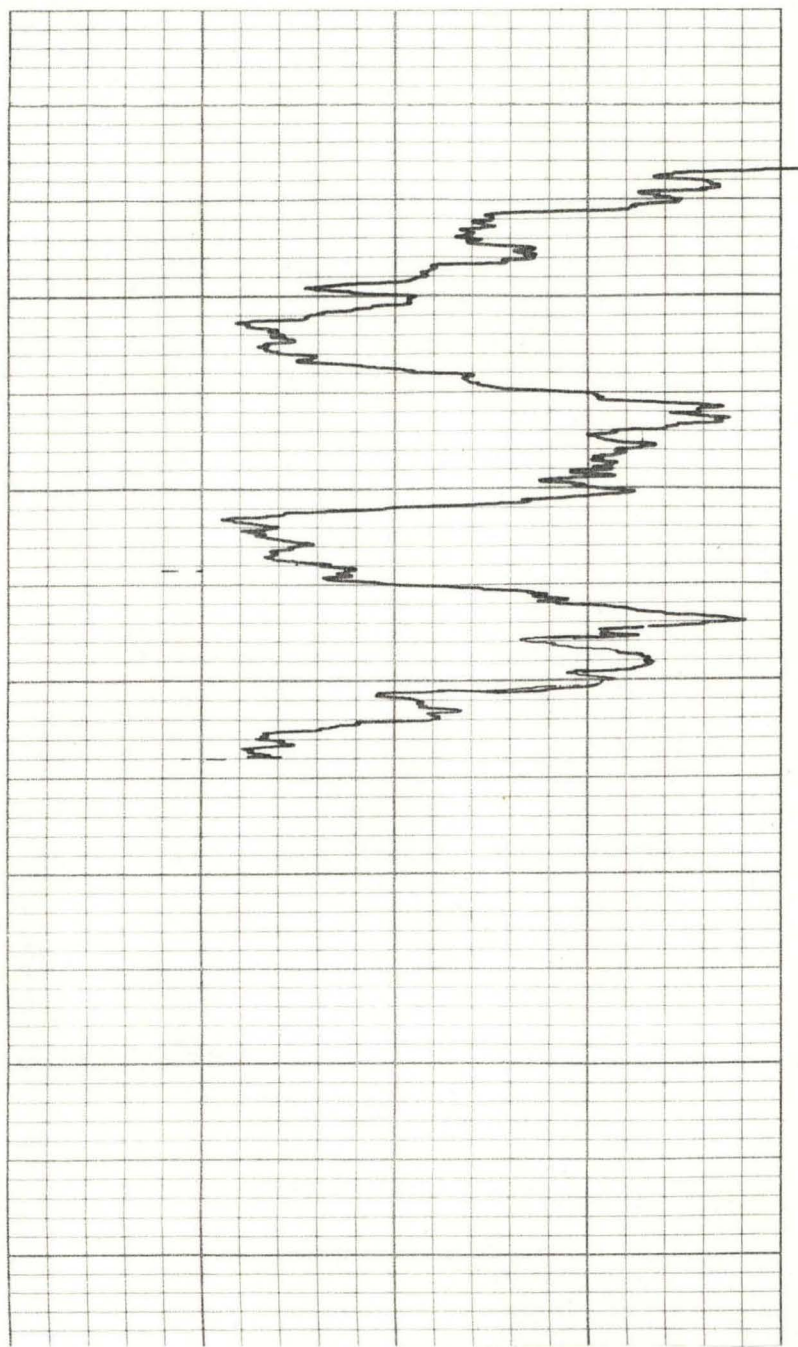
Open-hole Diameter: N/A in. Casing Depth: 0 ft. Casing Diameter: N/A in. Witness: N/A

Operator: B. Hoffman Remarks: logged through 6" hollow-stem auger flights

Logging Parameters:

	scale	speed	direction	TC
Gamma	<u>5</u> units/in.	<u>15</u> ft./min.	<u>uphole</u>	<u>8</u> sec.
SP	_____ mv/in.	_____ ft./min.	_____	_____
SPR	_____ ohms/in.	_____ ft./min.	_____	_____





0
20
40
60
80

orange brown damp clayey sand

Blk Creek Formation - ^{dark gr} med gr
subang, mod wt sst gty sst:
minor mica, trace glauc, pyrite,
and lignite

cly sst. A/A with conc lig and
more Fe-stn

sst: m gr, subang, nodal sst gty, minor pyr i lig,
to Fe-stn and R glauc

sdg Cl: dark gr w/ abnd fr-gr ang gty
minor pyr i lig, to Fe-stn and rare glauc

same as 42-50