

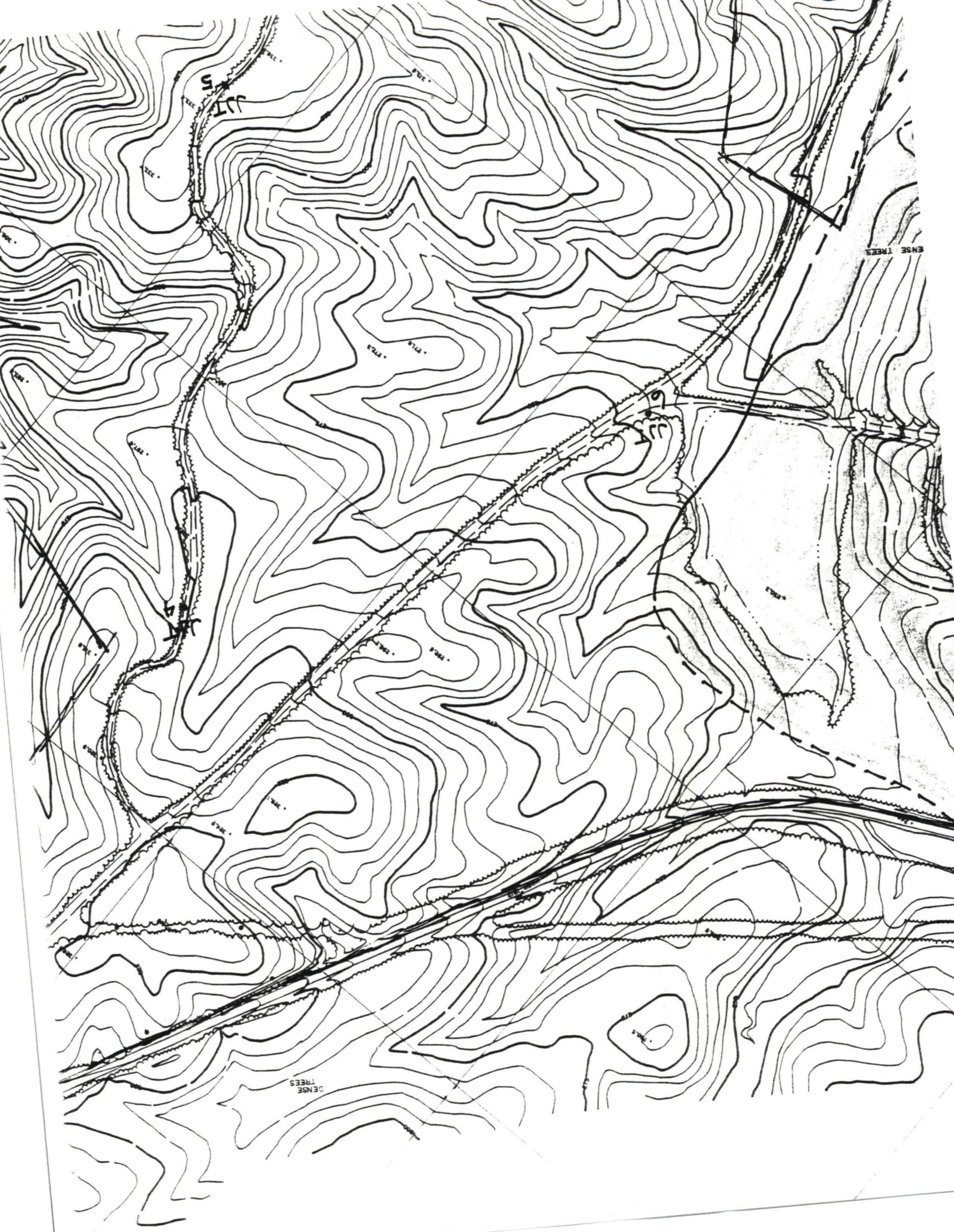
NELLO L. TEER COMPANY
EXPLORATORY DRILL LOG

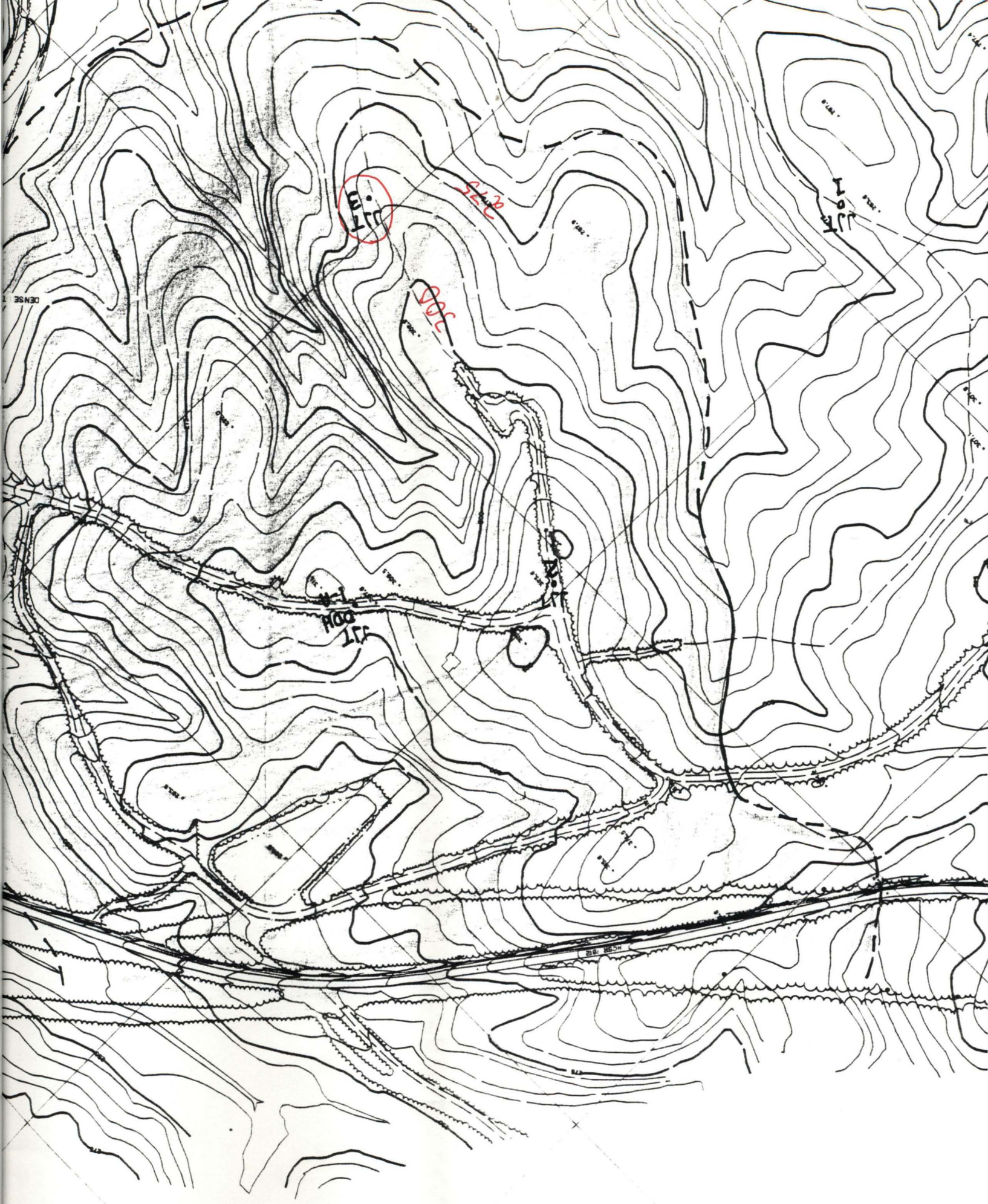
PROJECT CHATAM COUNTY SITE
 LOCATION MONCURE NC
 OWNER JUSTICE / OAK CITY REALTY
 Date start 9-5-89 compl. 9-5-89
 Geologist or Suptd. J. IZZEL
 Driller LUNAYEAR (CARL) Helper _____

Hole No. N17-DDH 3

Type drill _____
 Bit size _____ Casing size _____
 Groundwater Depth _____ ft.
 Static Water Level _____ ft.
 after 48 hrs. _____ ft.
 Water Loss _____ ft.

Strata Thick. ft.	Depth From To	Description	Run No.	Core Rec'y	RQD %
		OVERBURDEN - SILT CLAY WITH ROUNDED PEBBLES - TOP OF ROCK AT 37'			
		37'-44' : TRIASSIC CONGLOMERATE WELL ROUNDED PEBBLES (1/8" - 1/2") OF QUARTZ AND ASSORTED METAVOLCANICS VERY TIGHTLY PACKED WITH LITHIFIED CLAY MATRIX. SOME PRESSURE SOLUTION.	37' 39'	25	
		44'-65' : HIGHLY WEATHERED METAVOLCANIC VERY FINE GRAINED - SEEMS TO BE A HIGHLY ALTERED CHLORITE AND EPIDOTE RICH QUARTZO- FELDSPATHIC GREENSTONE. HEAVY TO LIGHT ALTERATION OF FELDSPAR AND CHLORITE TO CLAY. ROCK IS BADLY BROKEN (0% RQD) WITH HEAVY OXIDE STAINING ON FRACTURE SURFACES AND WITHIN ROCK. ROCK QUALITY DID NOT IMPROVE WITH DEPTH SO HOLE ENDS AT 65'	45' 49' 53' 55' 57' 60' 65'	50' 50' 25' 50' 25' 40' 15'	↑ 0' ↓





E. 170

S242

S202

HOO 170

HOO 170

HOO 170

HOO 170

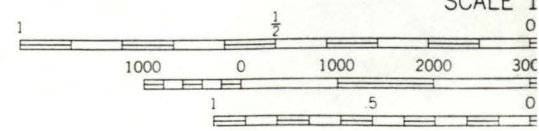
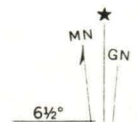
35N30

CH-C-3-89
 Lat: 35 3804
 Long: 790645
 7.5' Merry Oaks N.C.
 10' Contour Interval



Mapped, edited, and published by the Geological Survey
 Control by USGS, NOS/NOAA, and North Carolina Geodetic Survey
 Topography by photogrammetric methods from aerial photographs
 taken 1965. Field checked 1969
 Polyconic projection. 10,000-foot grid ticks based on North Carolina

(COLON)
 5155 11 SW



CONTOUR INT