

**NELLO L. TEER COMPANY**

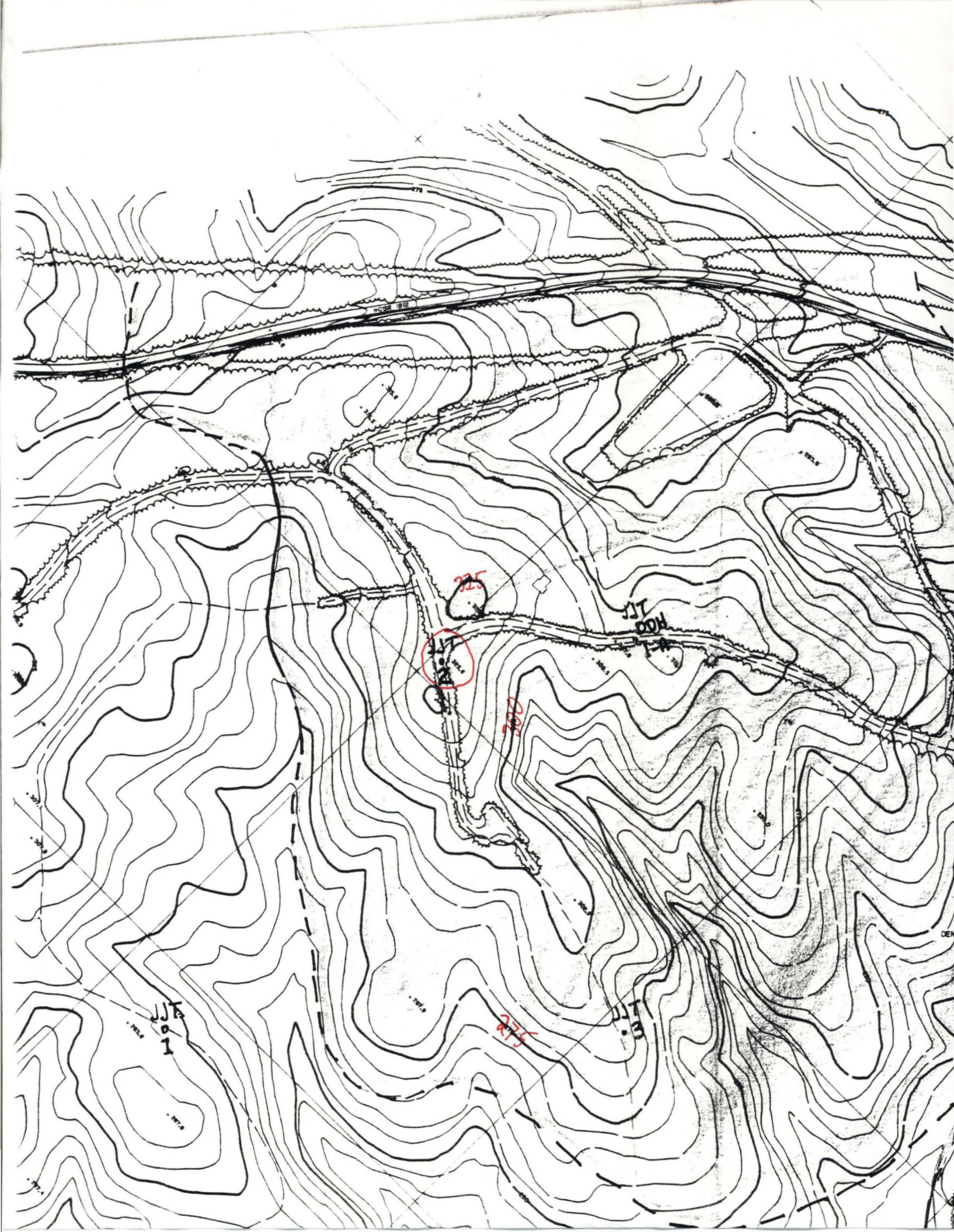
**EXPLORATORY DRILL LOG**

PROJECT CHATAM COUNTY SITE  
 LOCATION MONCURE  
 OWNER JUSTICE / OAK CREEK REALTY  
 Date start 8-31-89 compl. \_\_\_\_\_  
 Geologist or Suptd. JAMES IZZEL  
 Driller LONGYEAR (CARL) HELPER

Type drill \_\_\_\_\_  
 Bit size N Casing size 3  
 Groundwater Depth \_\_\_\_\_ ft.  
 Static Water Level \_\_\_\_\_ ft.  
 after 48 hrs. \_\_\_\_\_ ft.  
 Water Loss \_\_\_\_\_ ft.

Hole No. JJTOOH 2

Strata Thick. ft.	Depth From To	Description	Run No.	Core Rec'y	RQD %
OVERBURDEN 15'	15'	OVERBURDEN - DARK RED CLAY WITH ROUND QUARTZ GRAVEL. COLOR SIMILAR TO TRIASSIC. SOFT ROCK AT 12' - CASING SET AND CORING BEGINS AT 15'.			
15'-60'		15'-60' : TRIASSIC BASAL CONGLOMERATE LIGHT GREEN TO GRAY CONGLOMERATE. ROUNDED CLASTS; 1"-1/2" POORLY SORTED. CLASTS ARE WELL ROUNDED, VERY TIGHTLY PACKED - POSSIBLY VERY SLIGHTLY STRAINED. MED. TO HIGH RQD ~ 80%. CLASTS ARE MOSTLY METAVOLCANIC w/ SOME QUARTZ. HOLE ENDS BEFORE CONTACT w/ METAVOLCANIC.			





CH-C-2-89  
 Lat: 353815  
 Long: 790639  
 7.5' Quad  
 Merry Oaks N.C.  
 10' Contour Interval



(COLONY)  
 5155 11 SW

Mapped, edited, and published by the Geological Survey  
 Control by USGS, NOS/NOAA, and North Carolina Geodetic Survey  
 Topography by photogrammetric methods from aerial photographs  
 taken 1965. Field checked 1969  
 Polyconic projection. 10,000-foot grid ticks based on North Carolina

