

Mapped by the Army Map Service
 Published for civil use by the Geological Survey
 Control by USGS, USC&GS, and USCE

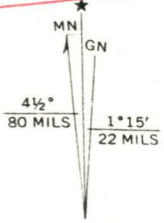
Topography from aerial photographs by photogrammetric methods
 Aerial photographs taken 1946-1947. Planimetric detail revised
 from aerial photographs taken 1955. Field check 1957

Polyconic projection. 1927 North American datum
 60,000-foot grid based on North Carolina coordinate system
 1000-meter Universal Transverse Mercator grid ticks,
 zone 17, shown in blue

Revisions shown in purple compiled from aerial photographs
 taken 1971. This information not field checked

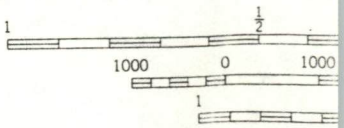
Purple tint indicates extension of urban areas

CD-T-6-86



UTM GRID AND 1971 MAGNETIC NORTH DECLINATION AT CENTER OF SHEET

MANCHESTER
7.5'



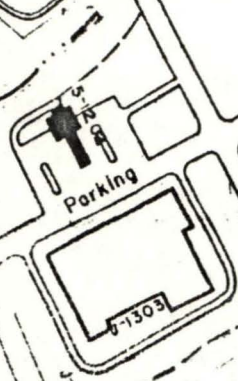
THIS MAP COM
 FOR SALE BY U.S
 A FOLDER DESCRIBING TO

NC 24

BLVD. N.C. STATE HIGHWAY 24

N 502,000

NO. 15



GRUBER

NO. 12



NO. 14

NO. 17

NO. 18

ELECTRIC SUB STATION

K-1319

K-1320

3

T-6-86

Club House NO. 9

NO. 1

NO. 16

Golf Course

NO. 4

NO. 5

N 500,000

CPRI ROW

STRYKER GOLF COURSE

STREET NO. 2



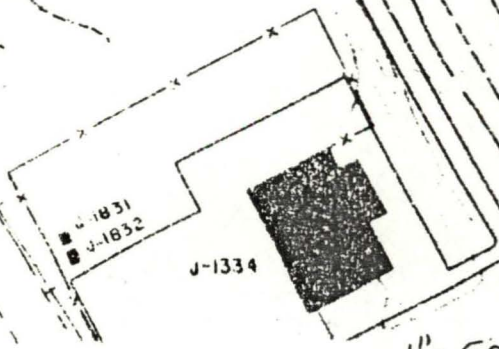
SEWAGE LIFT STA

T-586

NO. 8

CD-T-4-86

SHEET 7



NO. 6

NO. 7

NO. 3

1" = 500'

EXISTING PRODUCING WELL
IRRIGATION
AS TO
2/13/86

20
0.70 and

75 shale

50 clay
Scale to 50

50/25