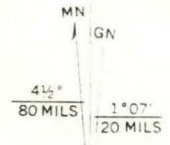


35°07'30"
79°07'30"

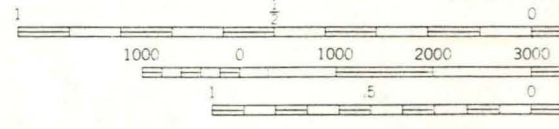
Mapped by the Army Map Service
 Published for civil use by the Geological Survey
 Control by USGS, USC&GS, and USCE
 Topography from aerial photographs by photogrammetric methods
 Aerial photographs taken 1946-1947. Planimetric detail revised
 from aerial photographs taken 1955. Field check 1957
 Polyconic projection. 1927 North American datum
 10,000-foot grid based on North Carolina coordinate system
 1000-meter Universal Transverse Mercator grid ticks,
 zone 17, shown in blue

(NICHOLSON CREEK)
 5154 11 SW

OVER HILLS QUAD 7.5'
SCALE 1:24000
CONTOUR INTERVAL 10 FEET



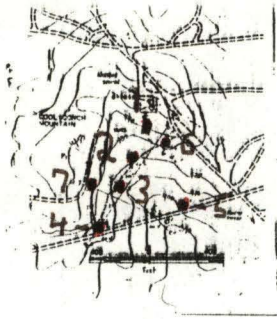
UTM GRID AND 1971 MAGNETIC NORTH
 DECLINATION AT CENTER OF SHEET



CONTOUR INTERVAL
 DATUM IS MEAN

THIS MAP COMPLIES WITH NATIONAL
 FOR SALE BY U. S. GEOLOGICAL SURVEY
 A FOLDER DESCRIBING TOPOGRAPHIC MAPS AND

8.



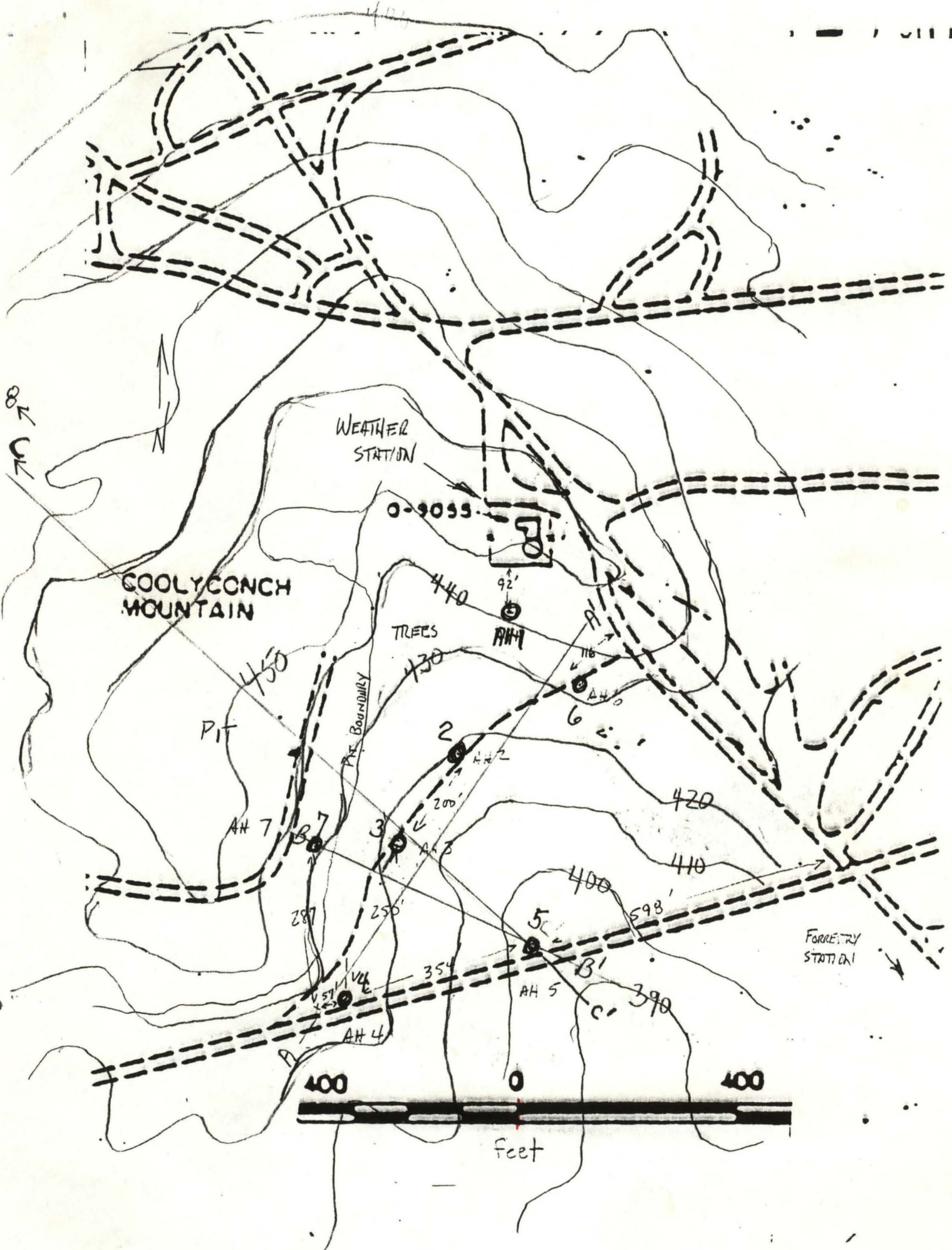
SCALE 1:24000

~~294 = 400'~~

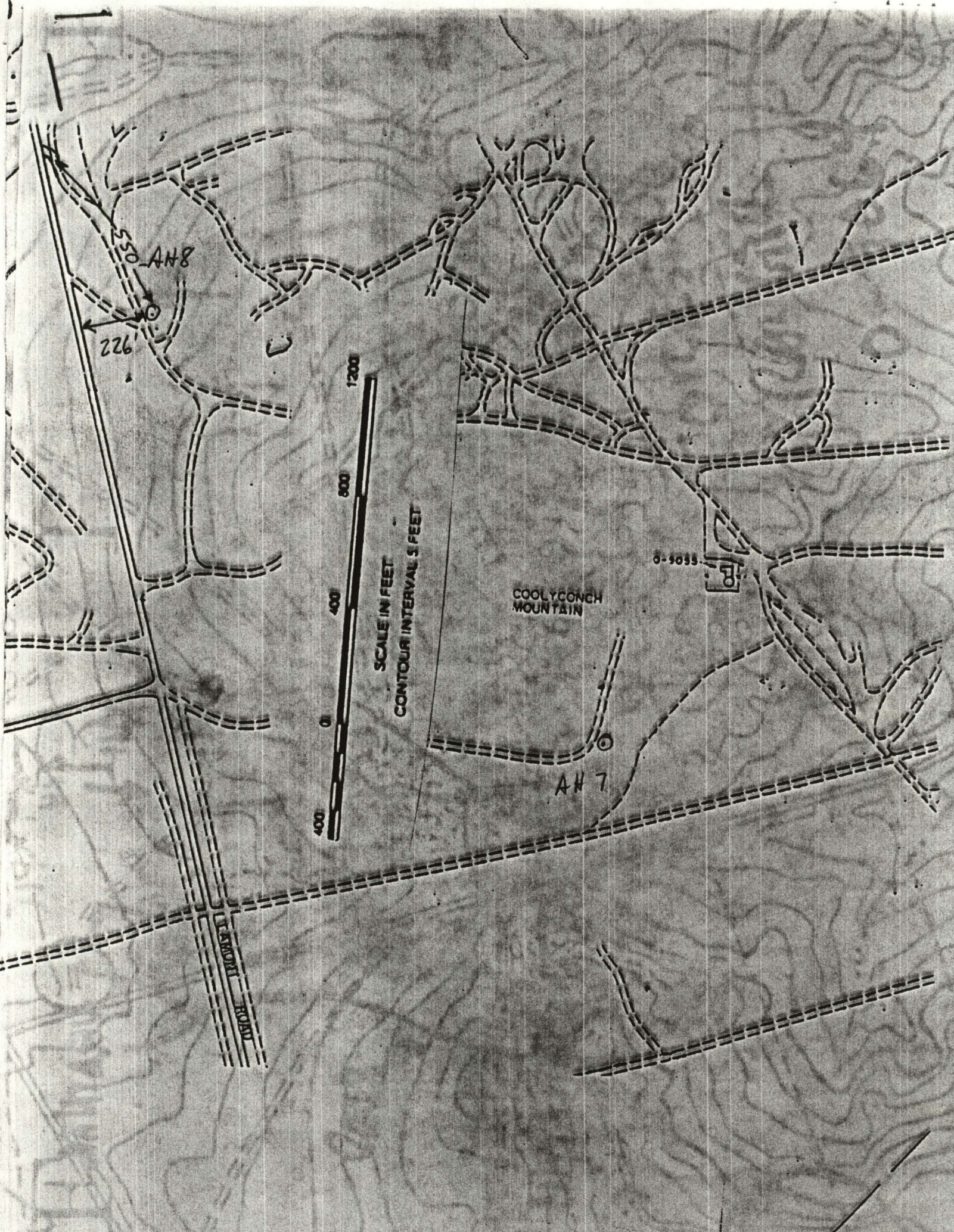
100 = 400' 10 = 40'

550

2,200



Small vertical text on the right edge of the page, likely a page number or reference code.



226
AH 8



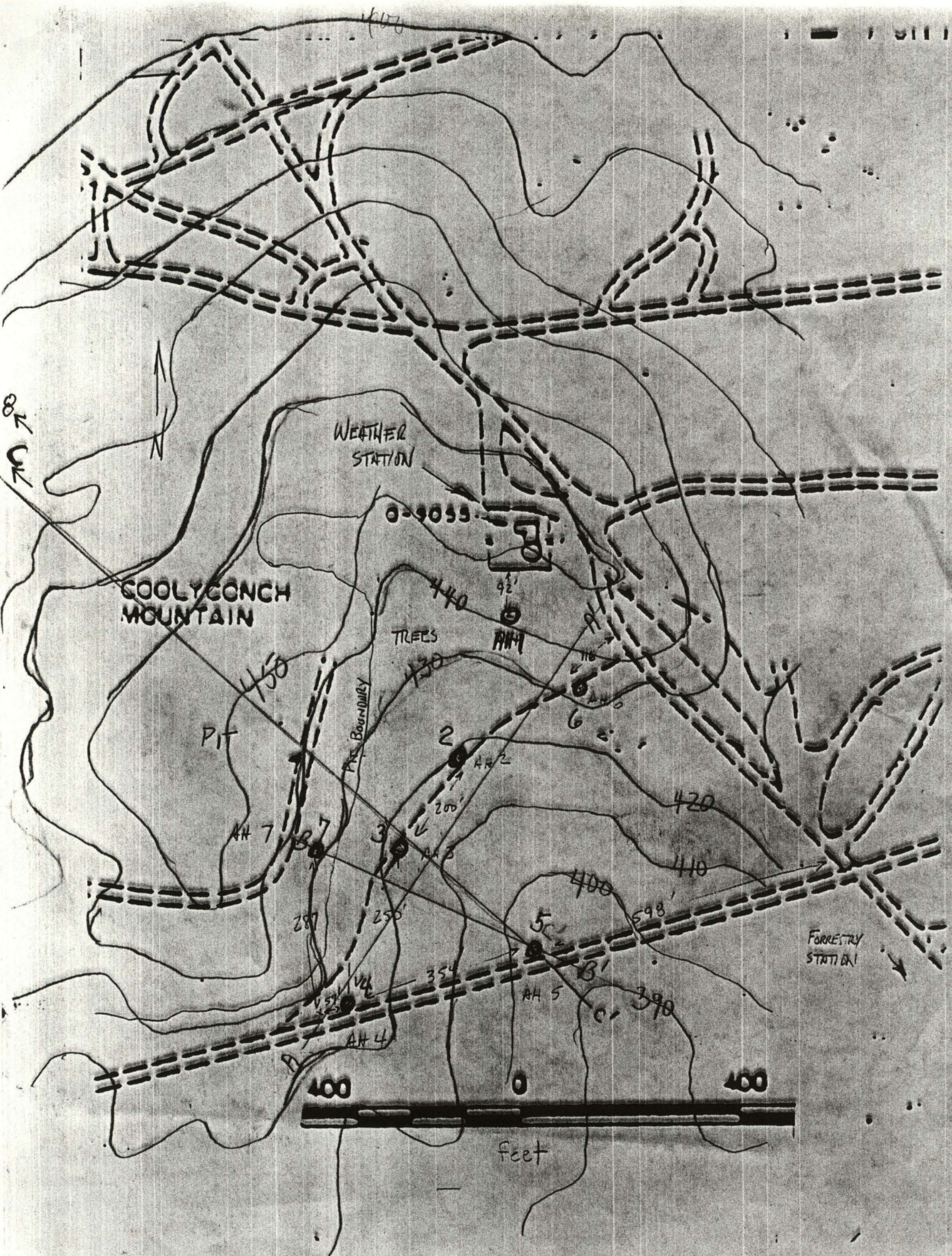
SCALE IN FEET
CONTOUR INTERVAL 5 FEET

COOLYCOGH
MOUNTAIN

EMORI
ROAD

AH 7

5055
R



WEATHER STATION

COOLYCONCH MOUNTAIN

0-9055

TILES

PIT

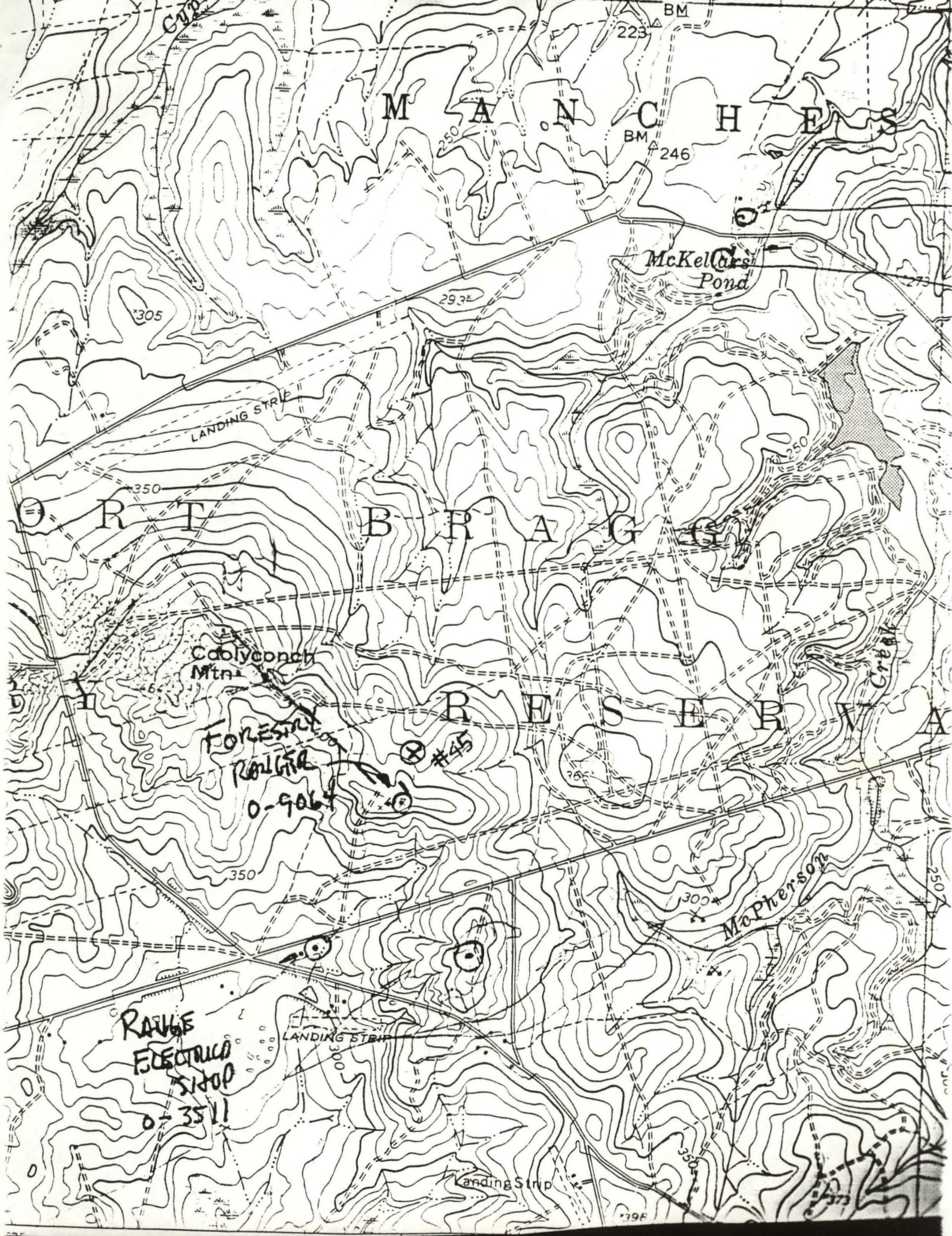
TRAIL

FORESTRY STATION

400

feet

400



M A N C H E S

McKellar's Pond

LANDING STRIP

O R I B R A G U

Collyer's Mt.

FORESTAL RAILWAY
0-9064

X #45

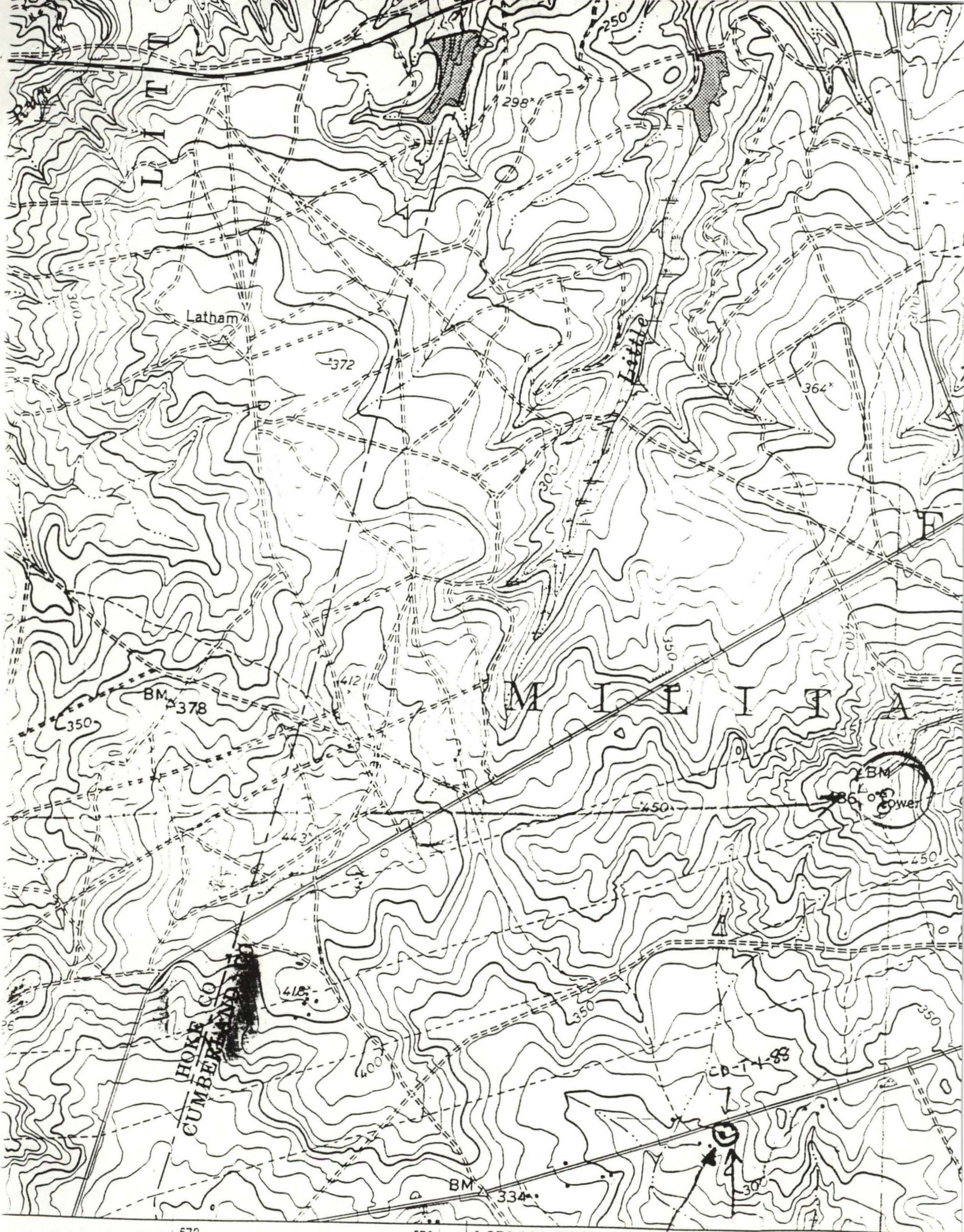
R E S E R V E

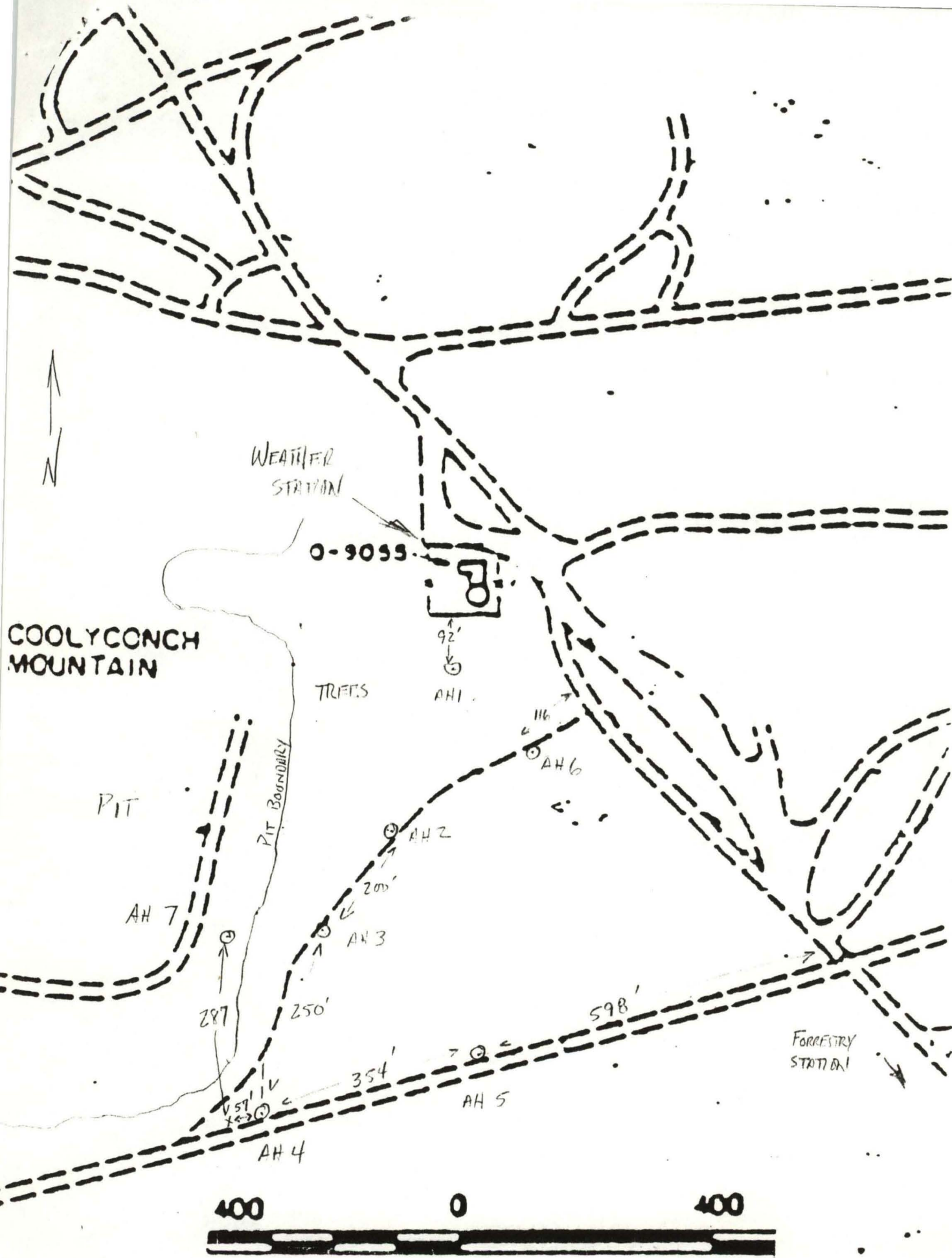
McPherson

RANGE ELECTRICAL
0-3511

LANDING STRIP

LANDING STRIP





COOLYCONCH MOUNTAIN

WEATHER STATION

0-9055

TREES

92'

AH1

PIT

PIT BOUNDARY

AH7

287'

AH2

200'

AH3

250'

354'

AH4

116'

AH6

598'

AH5

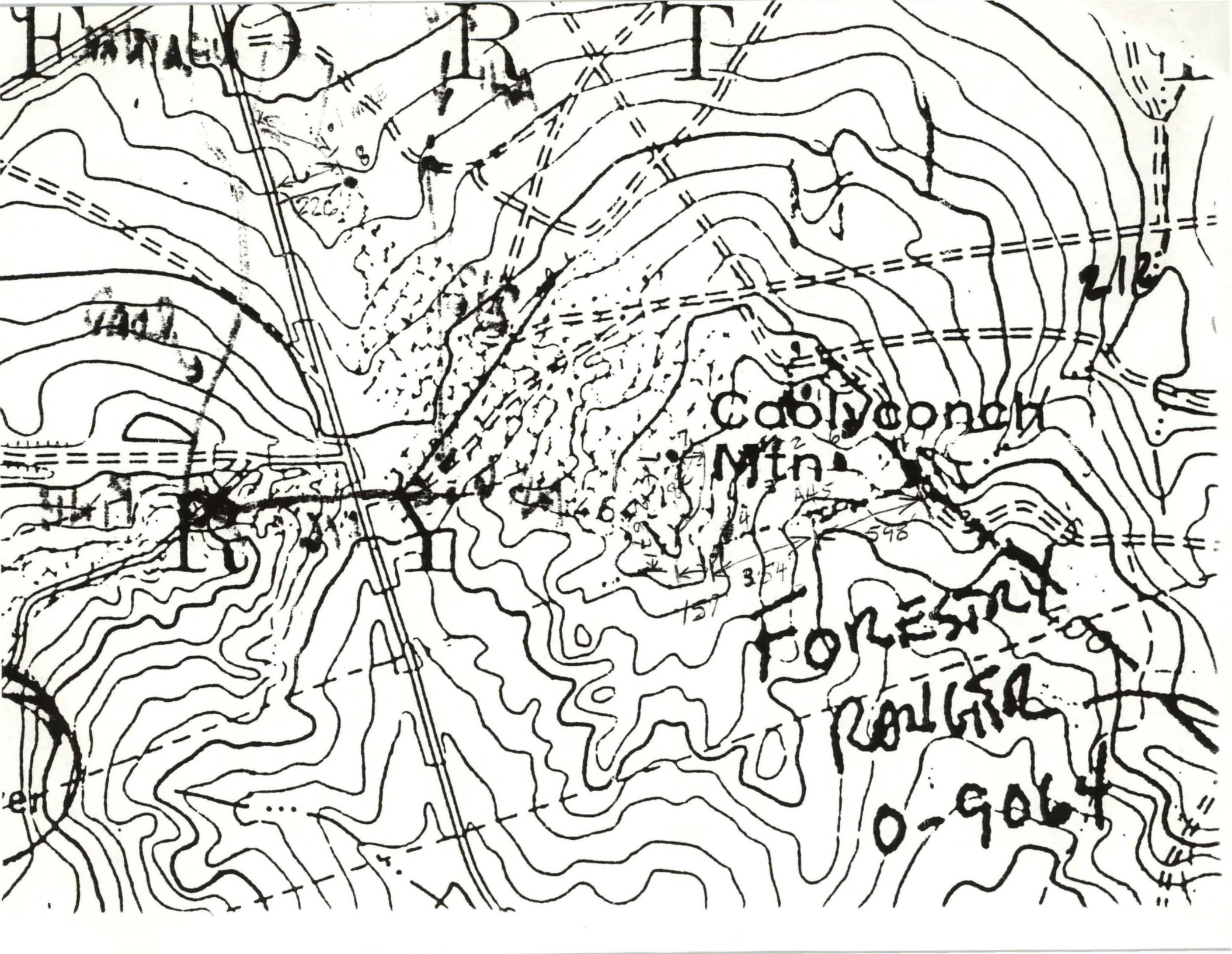
FORESTRY STATION

400

0

400

feet



H... R... T

Cable Mountain

Forest Reserve

0-9064

