

WELL CODE BW-T-2-75

ELEVATION 54'

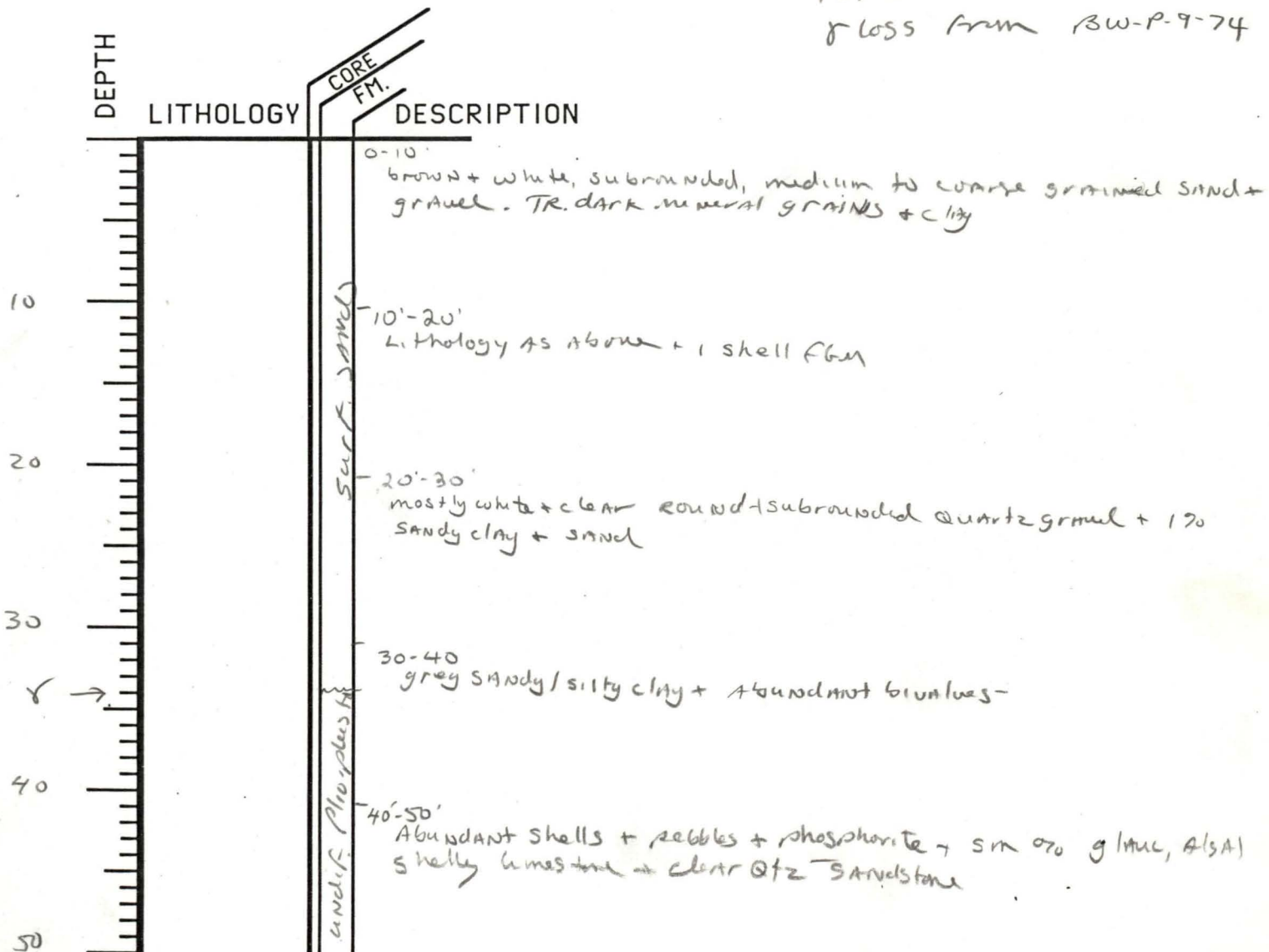
T.D. 260'

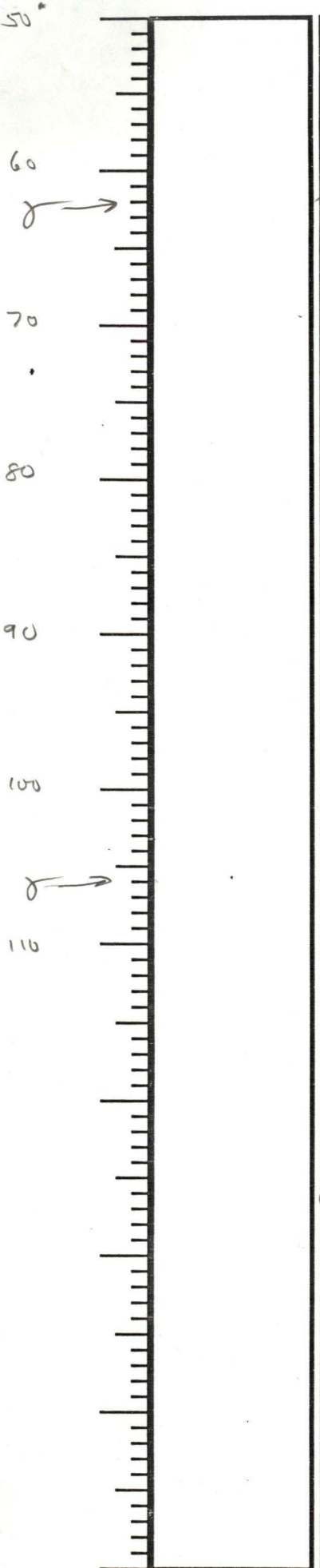
note: samples are in envelopes, but are not washed

- samples examined to 150'
samples below 60' seem to be contaminated with the undif. Plio-plisto.

This is difficult to reconcile with the location of CASING.

tops correlated via
γ loss from BW-P-9-74





50'-60'
Lithology as above

60'-70'
medium to fine grained quartz sand + abundant fine shelly material, abundant forams [mostly QLN] + TR. phosphorite

70'-80'
Lithology as above + TR. white limestone + GY. ZONAS

80'-90'
Lithology as above

90'-100'
Lithology as above

100'-110'
Abundant lg. shells, lesser gravel, TR white sandy limestone, quartz sandstone, phosphorite, glauconite, + fine sand

110'-120'
Lithology as above

120'-130'
Lithology as above

130'-140'
Lithology as above

140'-150'
Lithology as above + N 20% calcareous sandy matrix limestone

Core Case History

Ree der

SOUTH POOL 7.5'

BW-T-4-75

BW-T-3-75

BW-T-5-75

BW-T-1-75

BW-T-2-75

S M I T H

BM S64

BM T64

Polly Gully Creek

Popplestone Swamp

Jump

