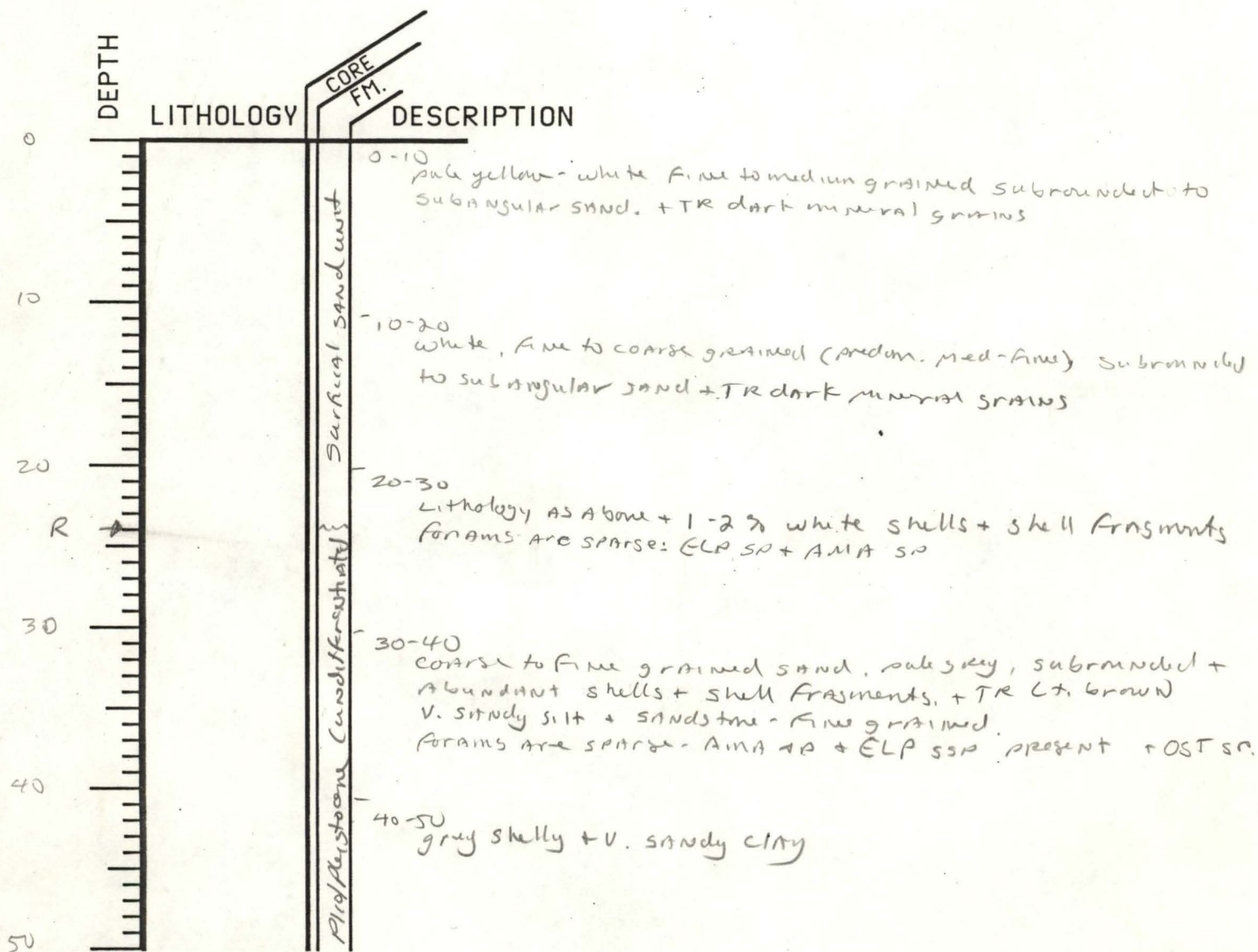


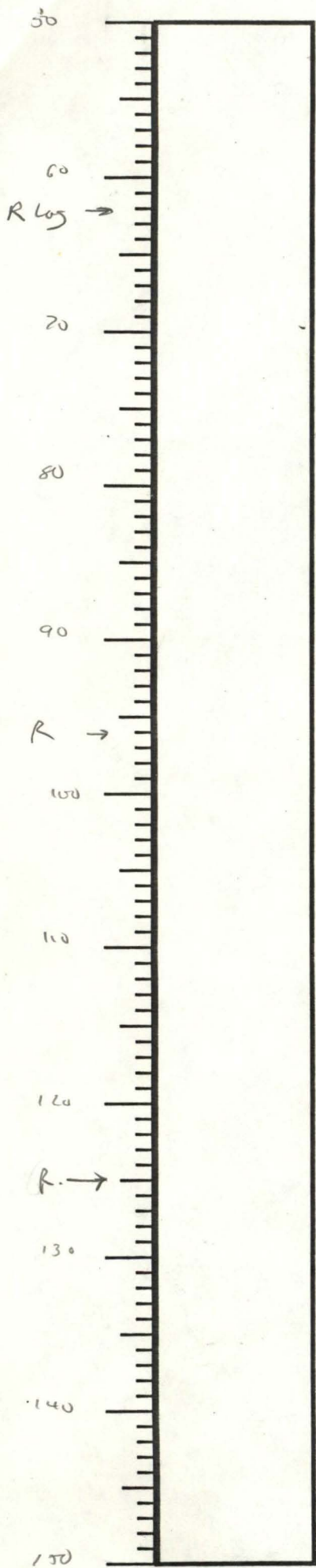
WELL CODE BW-P-7-69

ELEVATION 20

T.D. 190

NOTE: SAMPLES EXAMINED WERE NOT WASHED.





50-60
 olive/grey sandy + silty clay. - shells
 + shell fragments common

60-70
 pale grey gravel - v. coarse - fine grained sand + TR.
 shells, phosphorite?, glauconite + clay. (many coarse grains
 are rounded)

70-80
 Lithology as above except no phosph. or glauc.

80-86.5
 Lithology as above

86.5-90
 grey silty very fine grained sandstone.

90-100
 Dark grey sandy clay + TR cont + phosphorite

100-110
 dark grey sandy clay

110-120
 very sandy ^{grey} limestone, sandstone, fine grained + abund. sand

grey sandy moldic limestone + TR glauconite + phosphorite

135-140
 yellowish sandy limestone - very sandy

140-150
 Lithology as above

Castle Hayne

Beaufort

m

PD

150

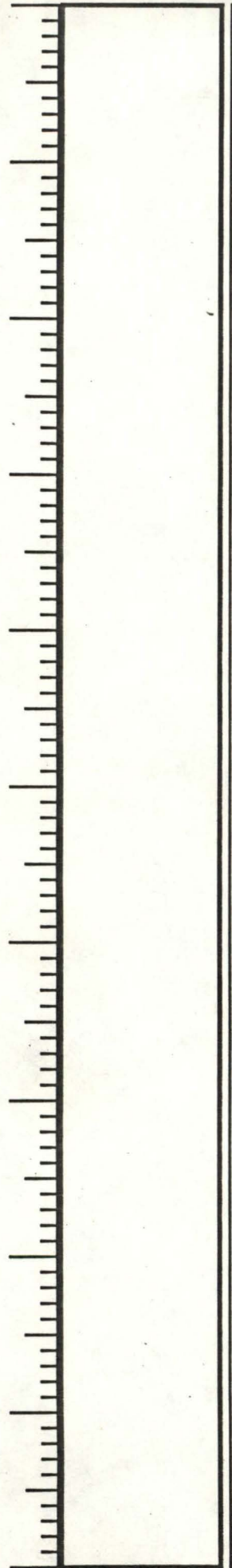
160

170

180

190

200



150-160

ORANGY multi colored sand, predom. med
 GRAINED + yellow ish silts + TR G/Auonite.
 - color may be a drilling artifact.

WELL CODE
 BW-P-7-69
 PAGE * 3

160-170

Lithology as above

170-180

Silty white medium to fine grained subangular sand

180-190

Lithology as above
 one Foram - GAVCRC