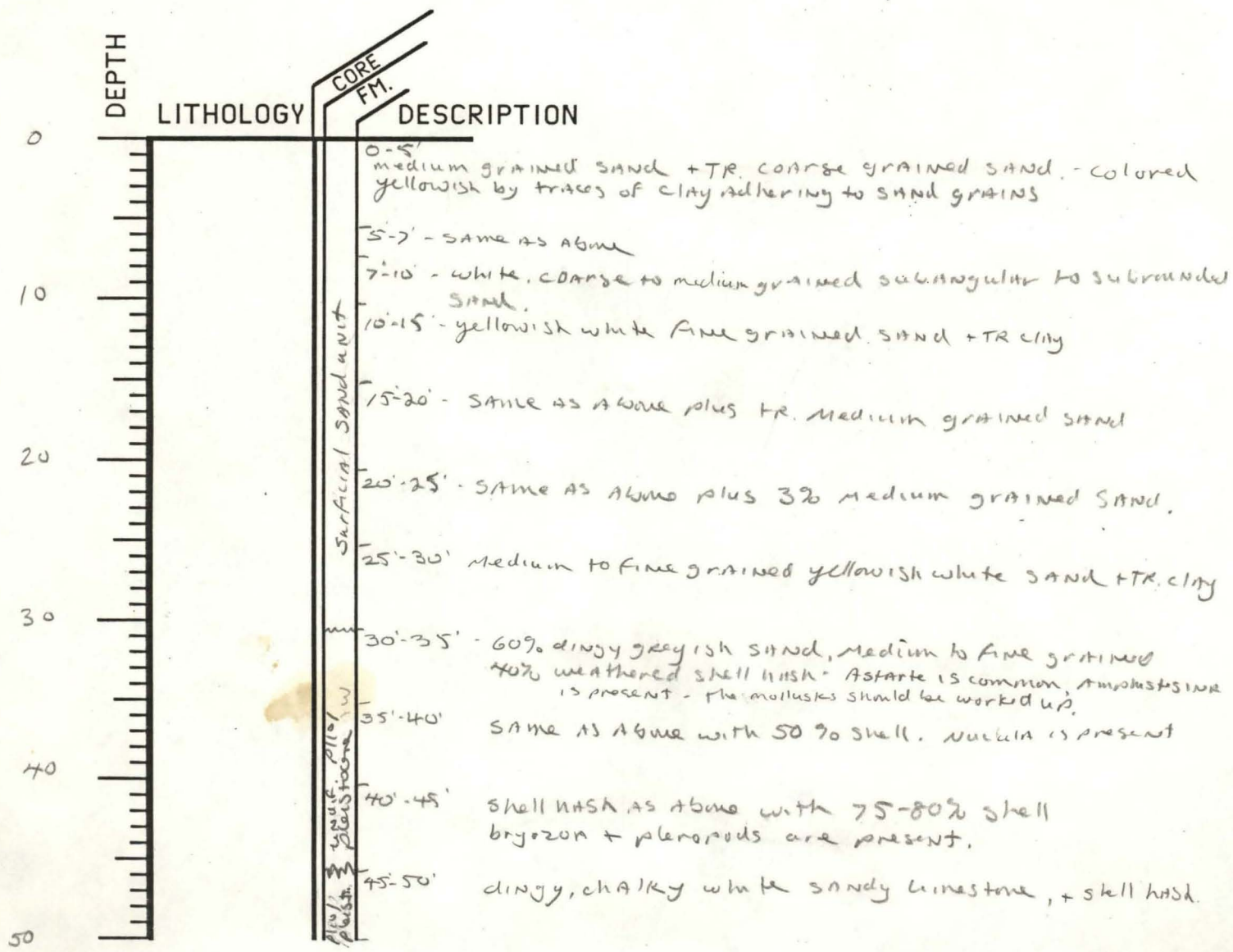


WELL CODE BW-P-3-77

ELEVATION 40'

T.D. 411'

- Notes: 1) For cuttings, unwashed samples examined 0-
2) Cored interval starts at 61' drill depth - see strip log for description of cored interval, 53' - 251'



50

60

70

80

90

100

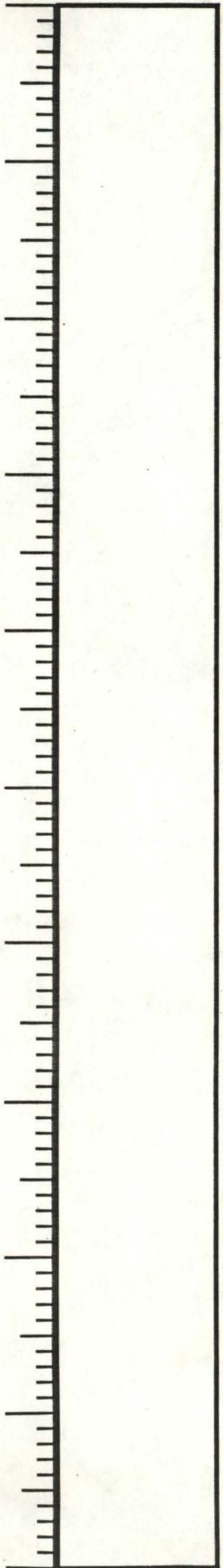
110

120

130

140

150



50-53'

50-53' - dense white sandy + shelly skeletal limestone

53-61 - same as above plus fine grained sand [see core for accurate lith.

61-71 - medium to fine grained quartz sand + abundant white sand-sized limestone fragments + TR. GLAUCONITE
In place - pale from core
GTR.
DOR of BED GLAUCONITE

71-81 - same as above - pale grey in color

WELL CODE BW-P-3-77

PAGE # 2

STATE

COMPANY

BW-P-3-77

COUNTY

FARM

WELL NO.

BLOCK

SURVEY

SEC.

TD = 411' el = 40'

T.

R.

TOTAL DEPTH

ALTITUDE

PRODUCTION

COMMENCED

COMPLETED

REMARKS

CASING RECORD

SHOT

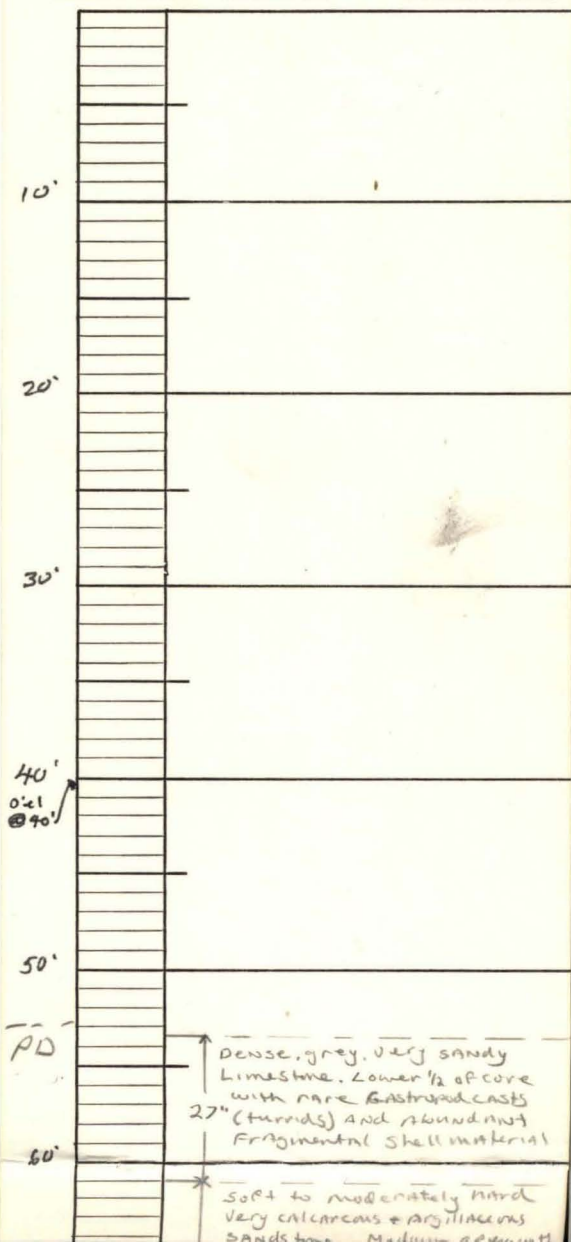
QUARTS

BETWEEN

Kraftbilt 186-B

TULSA 74101

PRINTED IN U.S.A.



70'	50'	* soft to moderately hard very calcareous + argillaceous sandstone. Medium grey with abundant fragmental shell material and rare small whole oysters, 1/4" long
	12"	* medium grey sandy + shelly argillaceous limestone. moderately well indurated.
80'	8"	* grey shelly and sandy argillaceous limestone, poorly indurated.
	68"	* medium grey to yellow shelly + sandy argillaceous limestone, moderately well indurated. - upper 1/2 grey, grades down to yellow.
90'	54"	* same as above - all yellowish. several ANOMIA preserved. much of the thin shelly material here and above may be ANOMIA fragments.
100'	62"	* same as above - color is yellowish grey, becoming more grey and more sandy at base of core
110'	34"	* same as above, - light grey + very sandy + shelly
	33'	* same as above. possibly 50% sand
120'	40"	* light grey, moderately to poorly indurated very calcareous + shelly sandstone (very similar to above). [note: second interval is also labeled 121-131 = 76" identical to 131'-141']
130'	20"	* dark grey sandy (coarse to fine grained) glauconitic clay - Cretaceous - U. CAMP or L. MABT. conchs. abundant. [note: sand interval is also labeled 131-141 = 15" of light grey calcareous sandstone]
140'	28"	* pale grey calcareous sandstone
150'	13"	* pale grey calcareous siltstone
	41"	* medium grey slightly shelly, very silty fine grained sandstone.
160'	36"	* pale grey calcareous sandstone with abundant fine shell fragments.

Rare shell fragments.

36"

170'

13" PALE grey calcareous SANDSTONE/SILTSTONE

180'

SAME AS ABOVE

28"

190'

200'

SAME AS ABOVE

16"

210'

SAME AS ABOVE - more sandy, less silty

76"

220'

230'

UPPER 25" - SAME AS ABOVE
73" LOWER 48" - dark grey, silty, very glauconitic SANDSTONE. - RARE shells preserved

240'

30" DARK grey silty sandstone, shells present - (OSTREA) no glauconite
SAME AS ABOVE

20"

250'

260'

270'

270'

280'

290'

300'

310'

320'

330'

340'

350'

360'

370'

