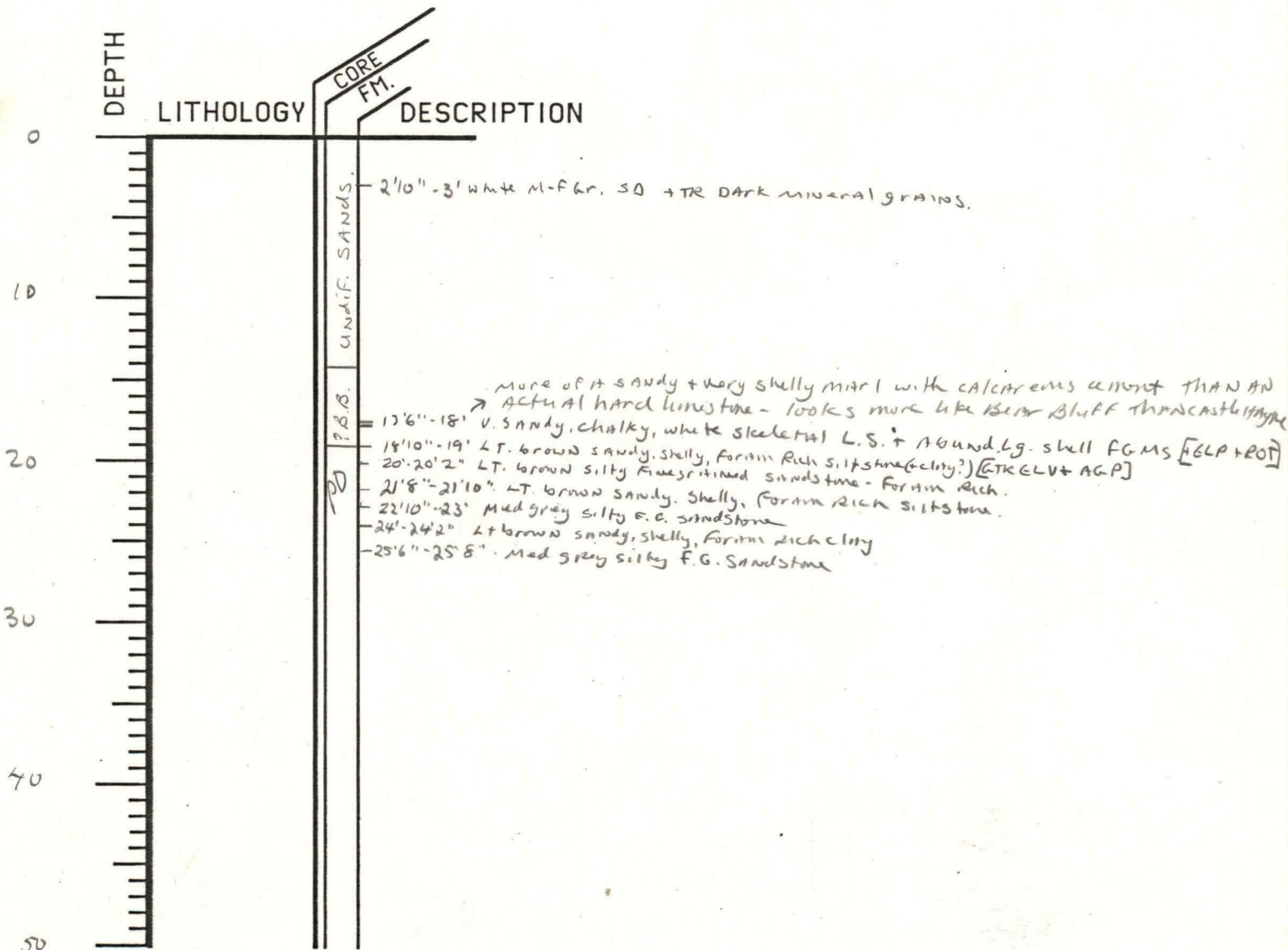


WELL CODE BW-C-1-79

ELEVATION 20

T.D. 83

note - only upper 25' examined - rest of well spot-checked - There is NO reason to examine 1' samples in the peedee for a tertiary RECONNAISSANCE study.



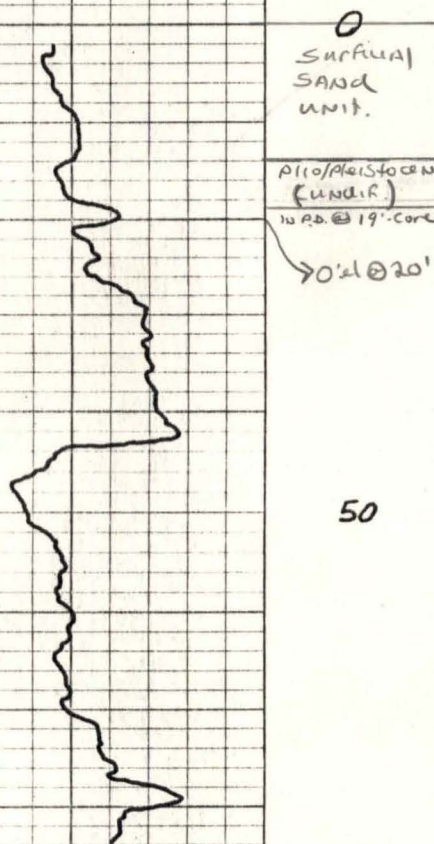
BW-C-1-79

GAMMA

Logged By: NCGS 3-30-79

Elevation: 20

Traced on clean base 2/80



0
SURFICIAL
SAND
UNIT.

Pliocene/Pleistocene
(undir.)
10 RB. @ 19' Core

→ 0' @ 20'

50

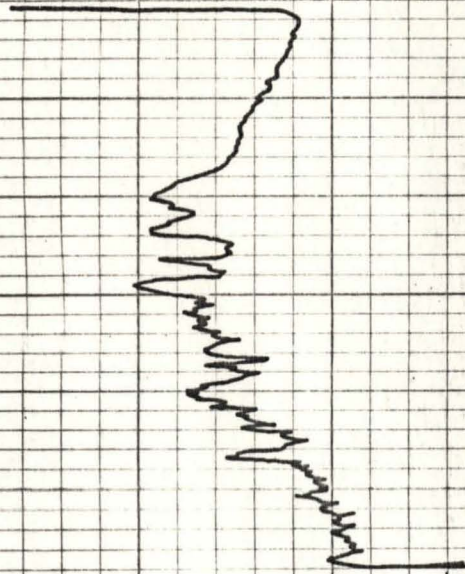
BW-C-1-79

SP

SPR

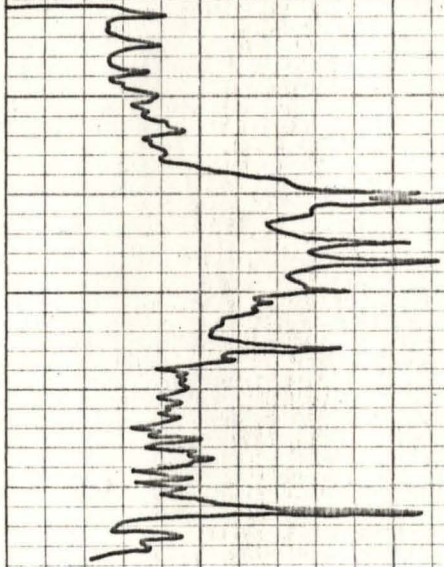
Elevation. 20

Traced on clean base 2/86



0

50



NORTH CAROLINA
 DIVISION OF MINERAL RESOURCES
 P.O. BOX 27687
 RALEIGH, NORTH CAROLINA 27611

Service: GAMMA-J.P.-S.P.R.

BW-C-1-79

COMPANY USGS

LAND OWNER _____

WELL NAME N.C. Bruns C-1 79

COUNTY Brunswick Co

Elevation

KB _____

DF _____

GL _____

Log Zero G.L.

Drlg Zero _____

Location

Toward The river off rte 133 Just south of Jackeyes Creek.

Date

3/30/79

Remarks

Run No.

ONE

TWO

Three

Type Log

GAMMA

GAMMA

GAMMA SP SPR

Depth Logger

75.2

83'

83'

Depth Driller

83.5

83.5

83.5'

Bottom Logged Interval

1'

4.8'

2'

Top Logged Interval

Type fluid in hole

Revert - Fresh water

Recorded by

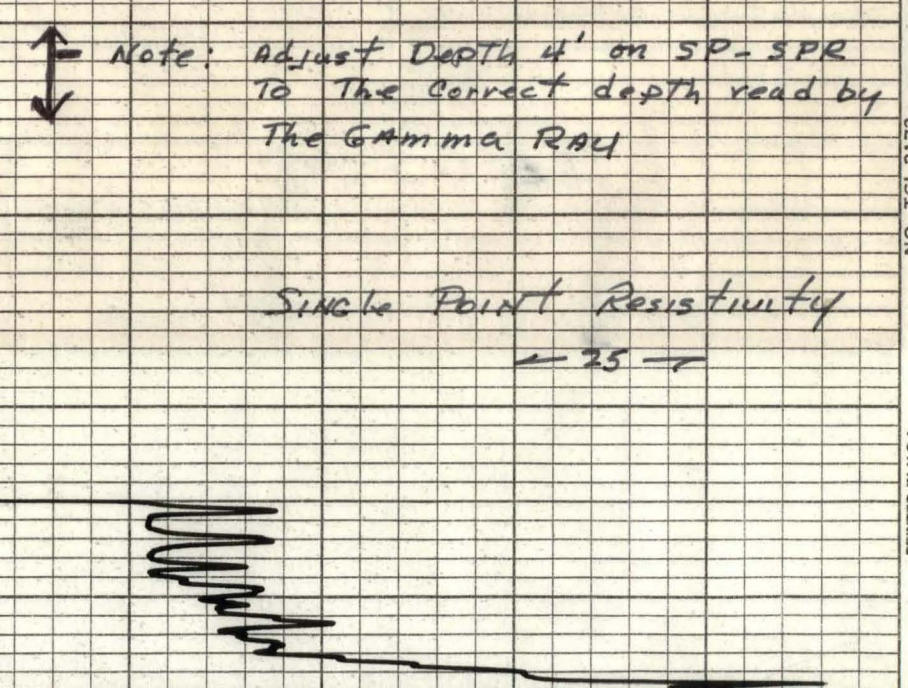
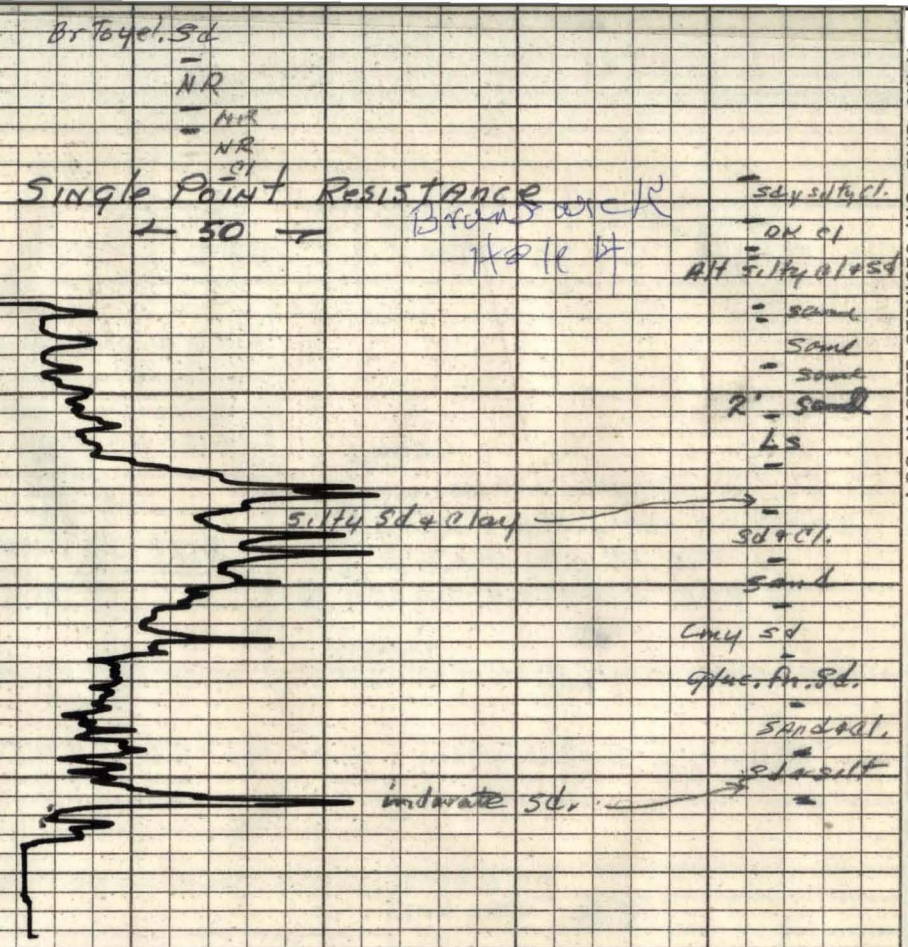
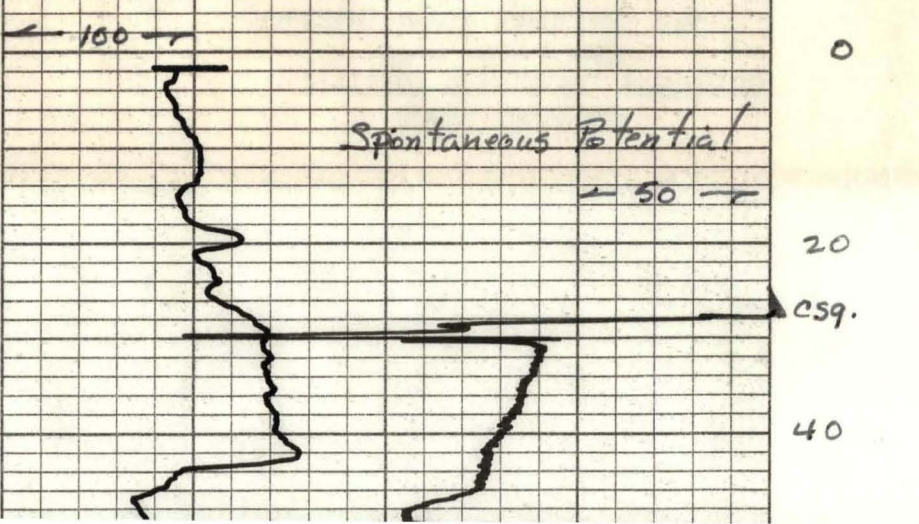
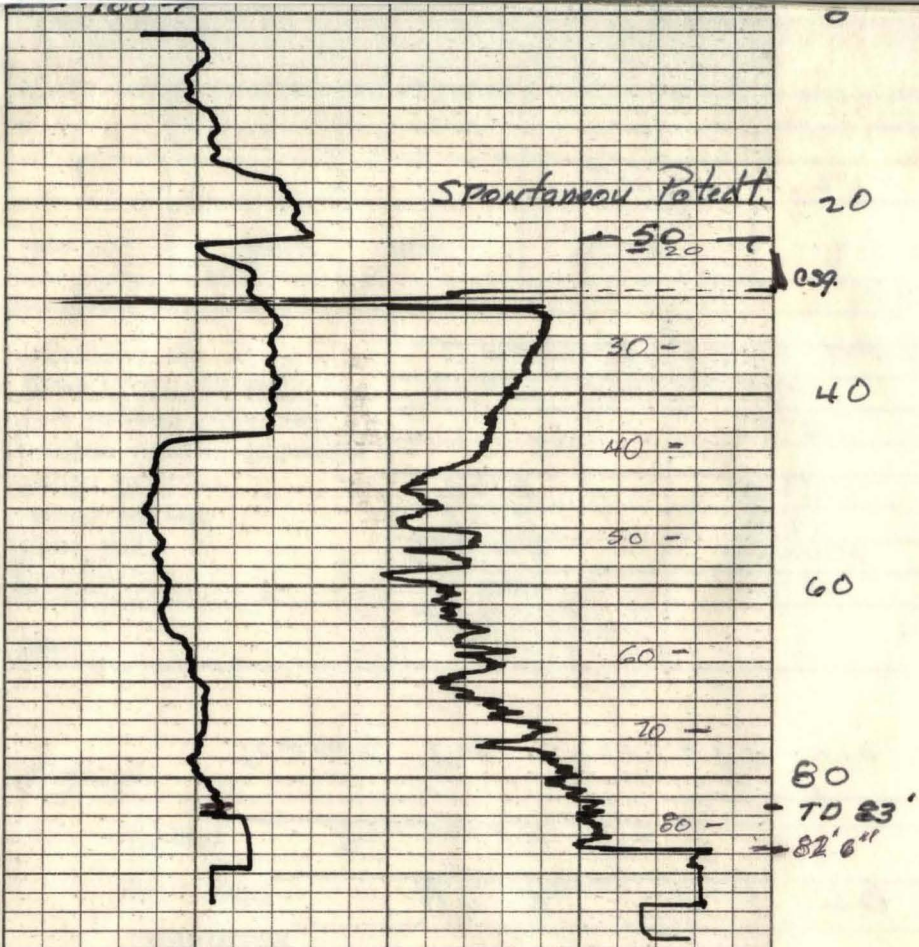
SAMPATR - McClamb

① using heaters too l.
 The crystal in the
 GAMMA section is weak.
 Therefore, repeatability is
 poor.

LOGGING DATA

Run No.	Base	Range	Ft/min.	T.C. Sec.	Range	Channel 2 Zero	Channel 3 Zero	S.P. Range	Channel 1 Zero
<u>1</u>			<u>20</u>	<u>2</u>	<u>50</u>				

GAMMA



Note: Adjust Depth 4' on SP-SPR To The Correct depth read by The Gamma Ray

40

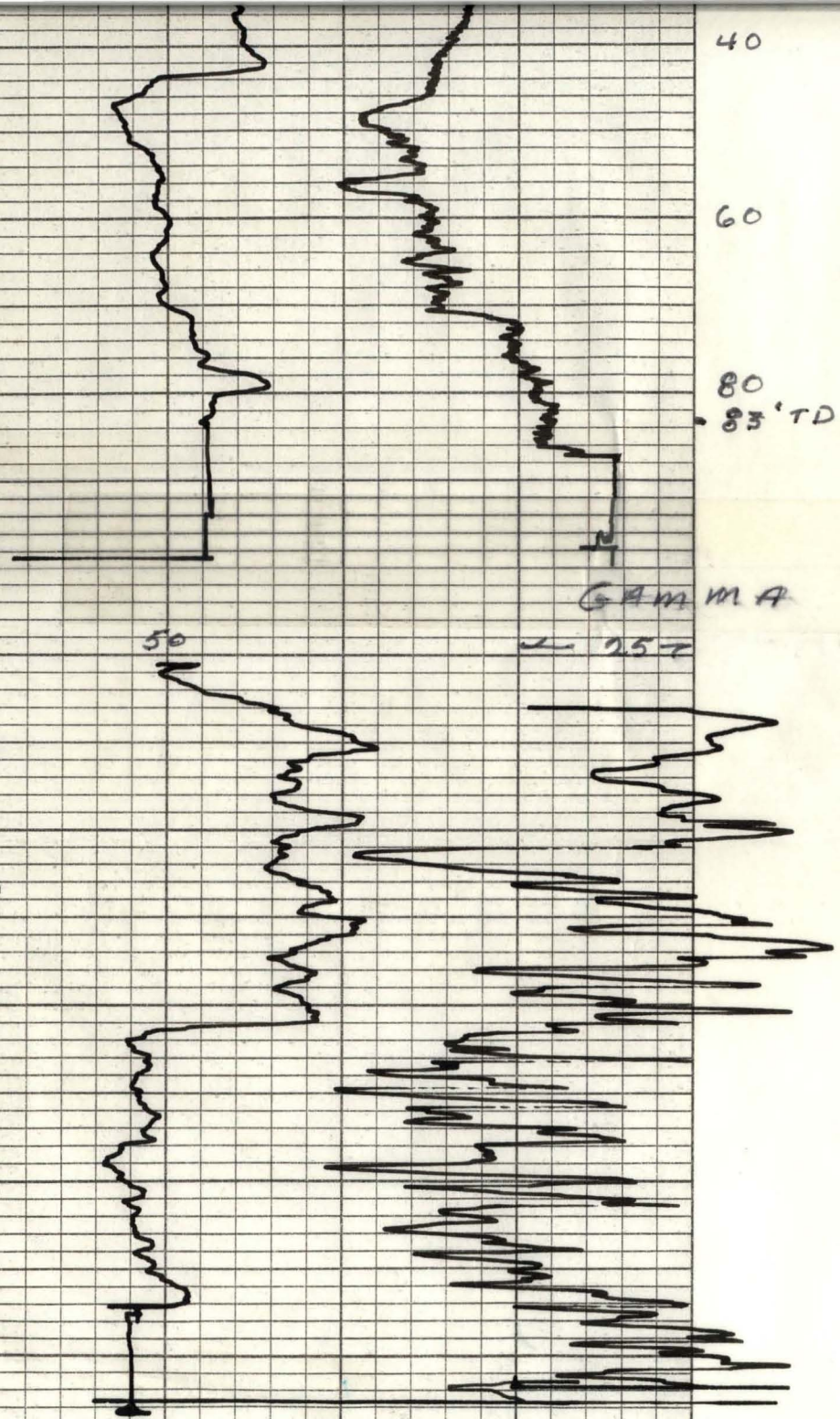
60

80
83' TD

GAMMA

25

50



(Logged Thru drill Pipe)
Poor repeatability

25

50

