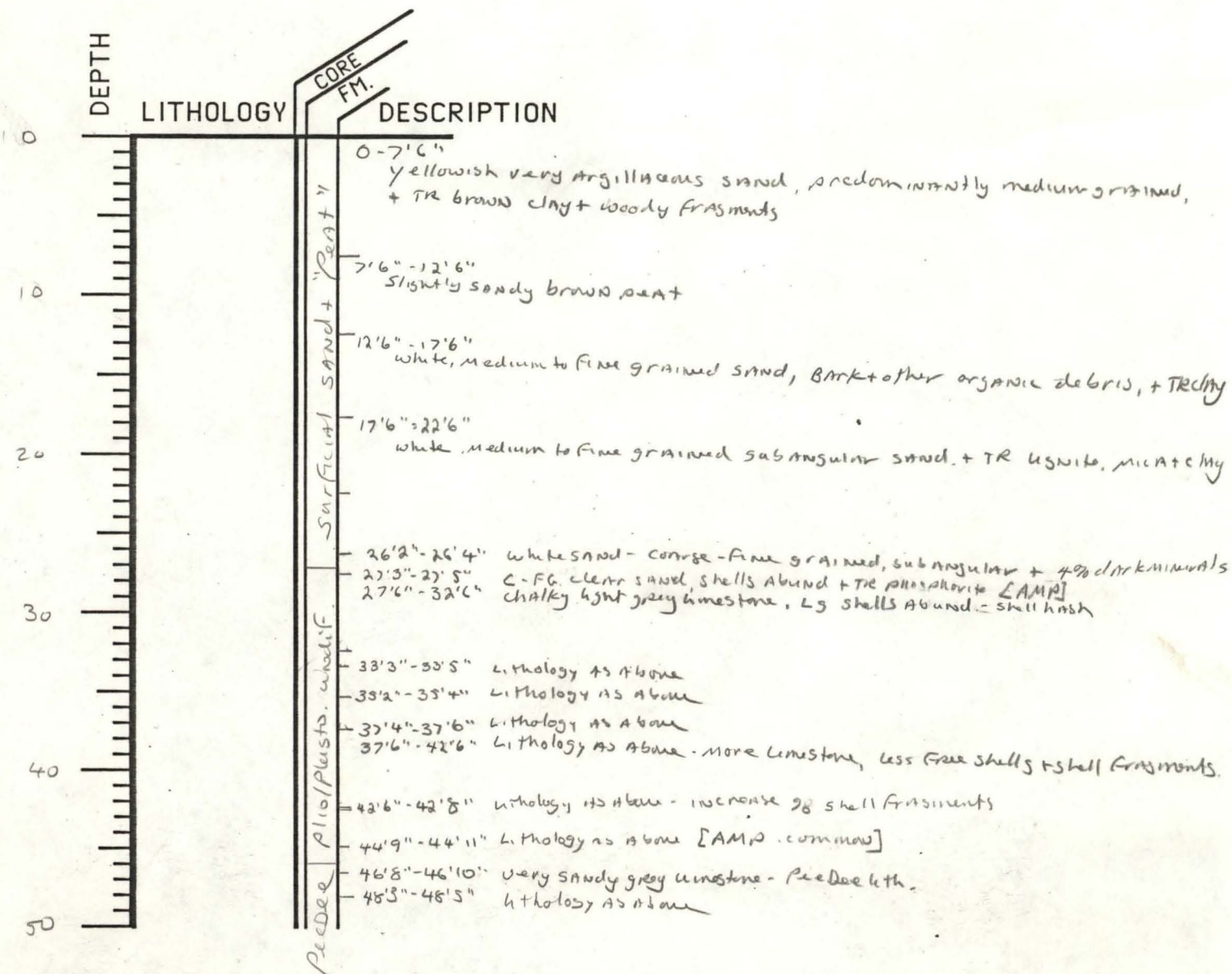


WELL CODE BW-C-3-79

ELEVATION 40'

T.D. 82'

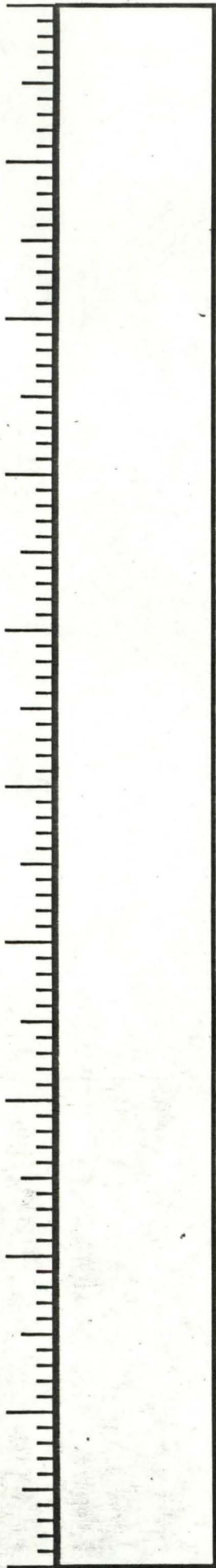


50'

60

70

80



50'3"-50'5" Lithology as above + Mound. M-FG SD
 51'-51'6" Lithology as above - some L.S. argillaceous
 53'4"-53'6"

WELL CODE
 BW-C-3-79

PAGE # 2

Remainder of well spotted -
 more argillaceous 70' + below

NORTH CAROLINA
 DIVISION OF MINERAL RESOURCES
 P.O. BOX 27687
 RALEIGH, NORTH CAROLINA 27611

Service: S.P. Gamm - S.P.R.

BW-C-3-79

COMPANY U.S.G.S.

LAND OWNER _____

WELL NAME N.C. Brun.-C3-79

COUNTY Brunswick County

Elevation

KB _____

DF _____

GL _____

Log Zero G.L.

Drlg Zero _____

Location @ ~~the~~ creek on S.R. 1512 - 4 mi from Bolivia
 middle swamp

Date	4/6/79	4/6/79	Remarks
Run No.	<u>ONE</u>	<u>TWO</u>	<u>Cored by USGS</u>
Type Log	<u>GAMMA</u>	<u>GAMMA, SP, SPR</u>	
Depth Logger	<u>82.5'</u>	<u>82.5'</u>	
Depth Driller	<u>82.5'</u>	<u>82.5'</u>	
Bottom Logged Interval	<u>82.</u>	<u>82.</u>	
Top Logged Interval	<u>1'</u>	<u>4.8'</u>	
Type fluid in hole	<u>Revert - lime & water</u>	<u>Revert - lime & water</u>	
Recorded by	<u>SAMPAIR</u> <u>McClamb</u>	<u>SAMPAIR</u> <u>McClamb</u>	

LOGGING DATA

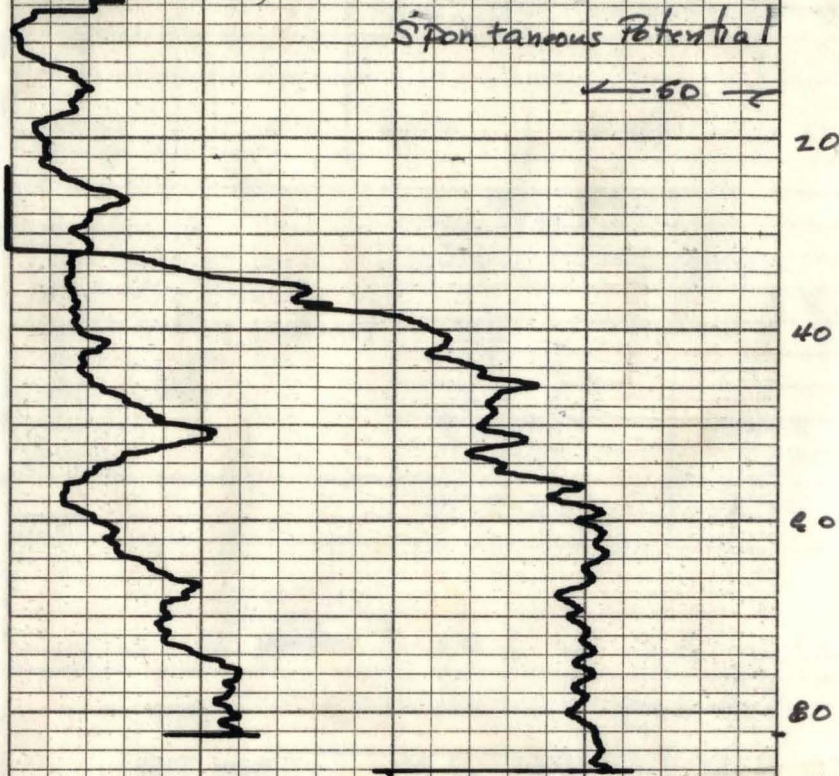
Run No.	Base	Range	Ft/min.	T.C. Sec.	Range	Channel 2 Zero	Channel 3 Zero	S.P. Range	Channel 1 Zero
<u>I</u>			<u>15</u>	<u>4</u>	<u>25</u>	<u>(Logged Thru the drill Pipe)</u>			
<u>II</u>		<u>50 SW</u>	<u>15</u>	<u>4</u>	<u>50</u>			<u>50 MV</u>	

Gamma Ray

← 50 →

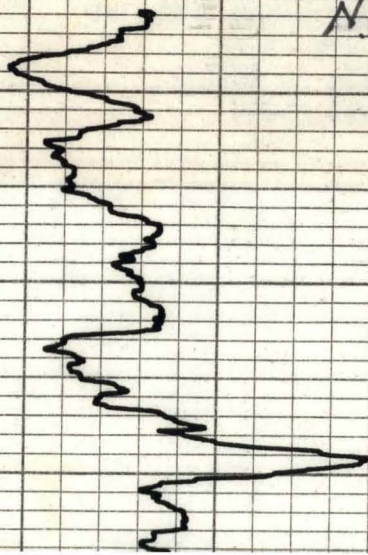
Spontaneous Potential

← 60 →



Note: There is

N.C. Brun., C3, 79°
Run I

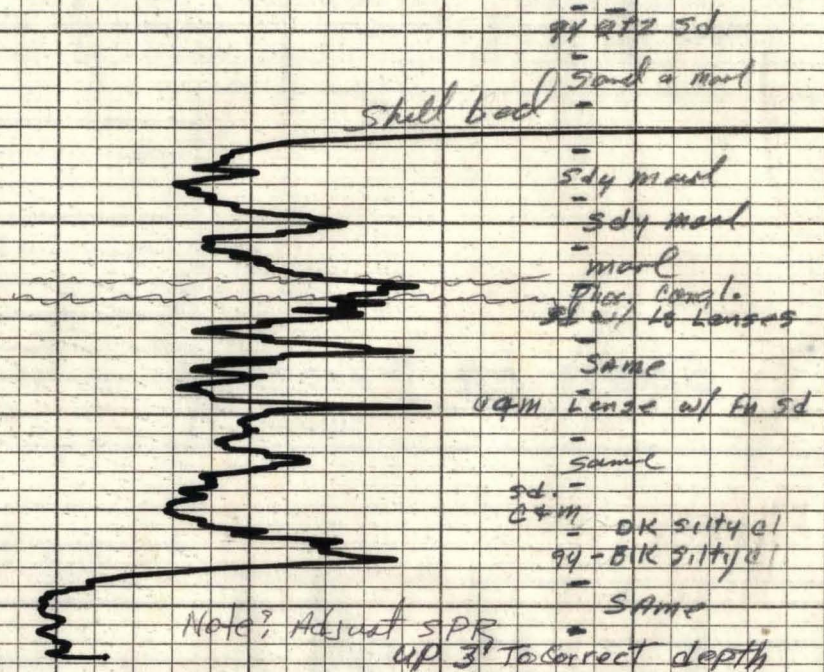


20

40

SINGLE POINT Resistivity

← 50 →



94-22 sd

500 a mud

shell bed

sd y mud

sd y mud

mud

Phos. Concl.

sd w/ 10 Lenses

same

uqm Lense w/ fu sd

same

sd

uqm

OK sily cl

94-BIK sily cl

same

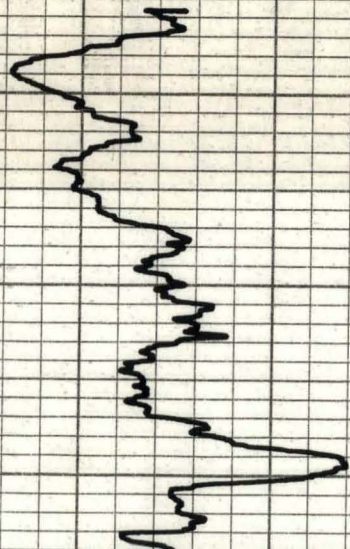
Note? Adjust SPR
UP 3' To correct depth

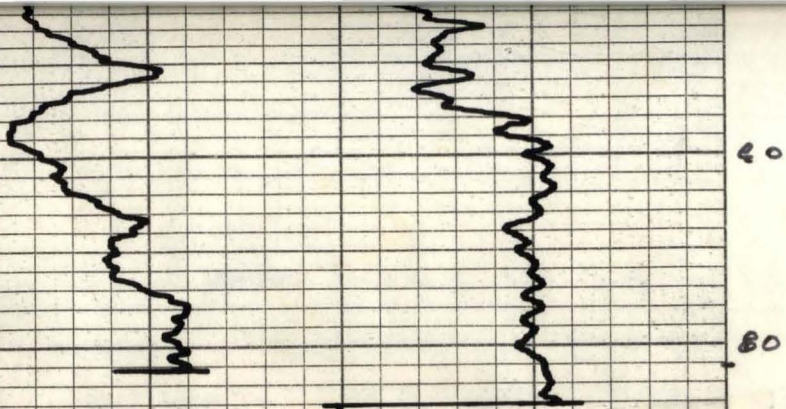
a 4' lag between the Gamma &
the SP-SPR due to Pan Placement
ON the recorder.

Logged Thru Pipe

Range 2 TC

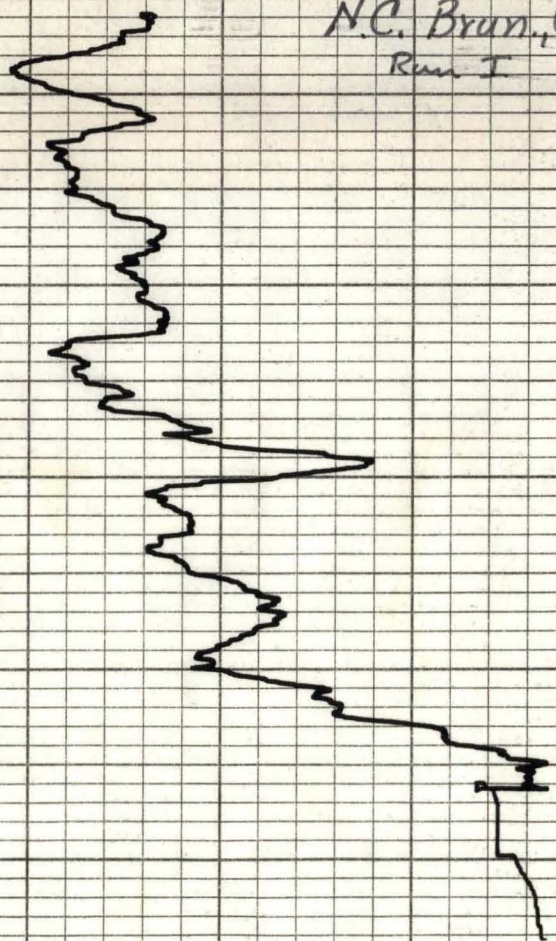
25 mV. 4 @ 15'/min





Note: There is

N.C. Brun., C.3, 79°
Run I

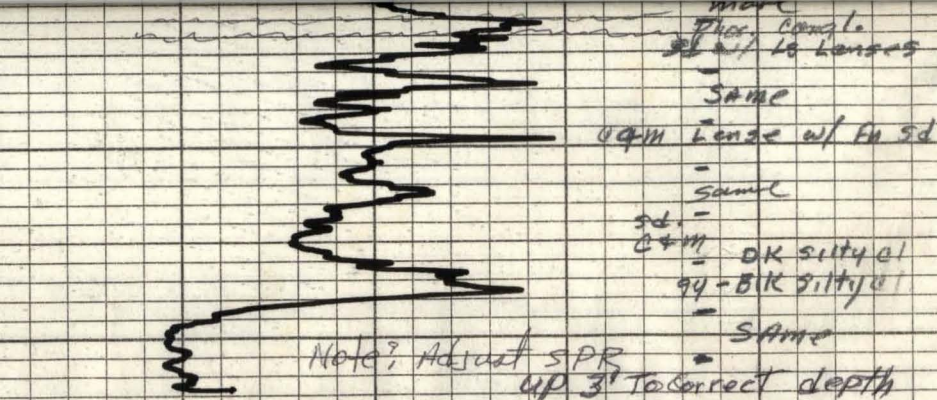


20

40

60

80

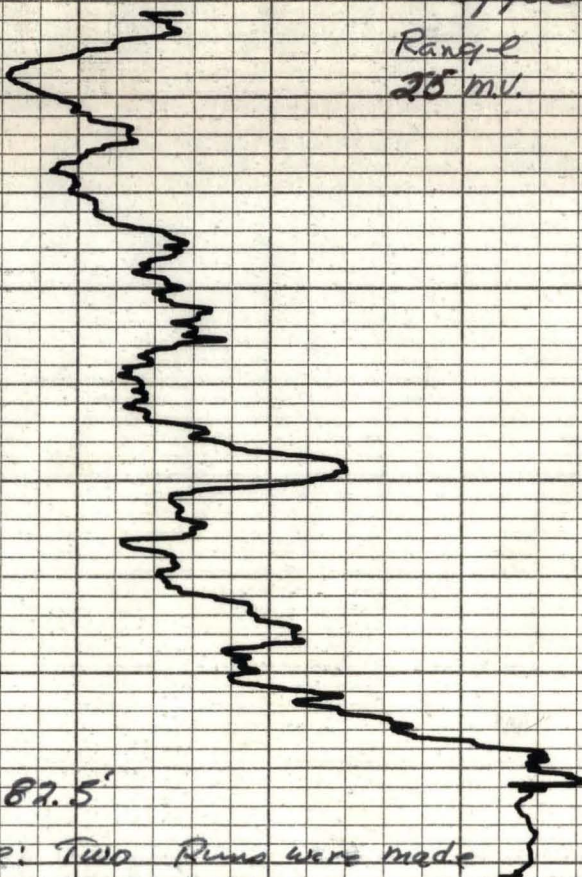


Note? Adjust SPR
up 3' to correct depth

a. 4' lag between the gamma &
the SP - SPR due to Pen Placement
on the recorder.

Logged Thru pipe

Range 2 TC
25 ml. 4 @ 15'/min



T.D. 87.5'

Note: Two Runs were made
to establish repeatability.

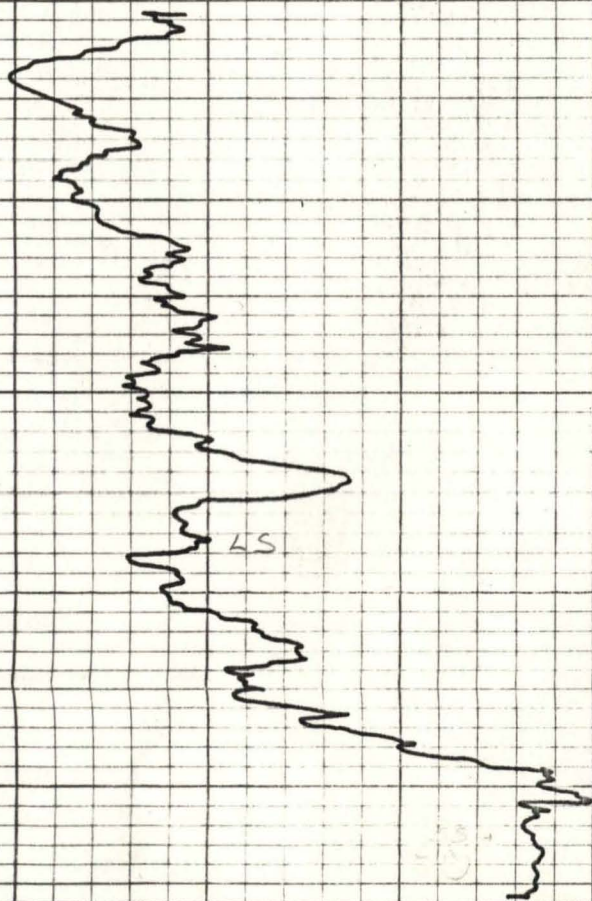
BW-C-3-79

GAMMA

Logged By: NCGS 4-6-79

Elevation: 40

Traced on clean base 2/86



0

10

20

30

WALCAMITH

40

50

Predee

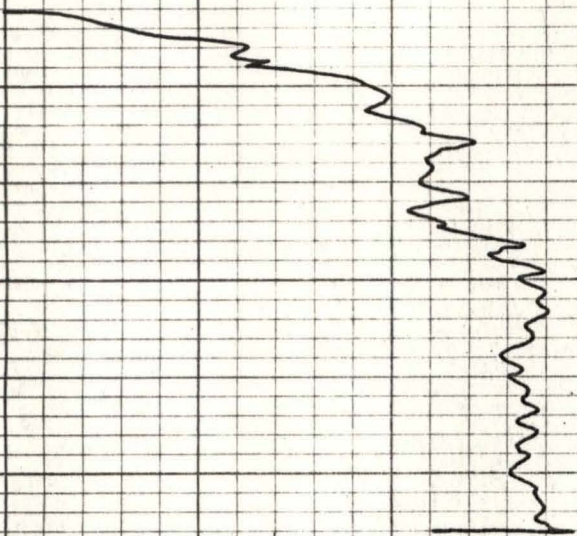
BW-C-3-179

SP

Logged By: NCGS 4-6-79

Elevation: 40

Traced on clean base 2/86



0

50

STR

