

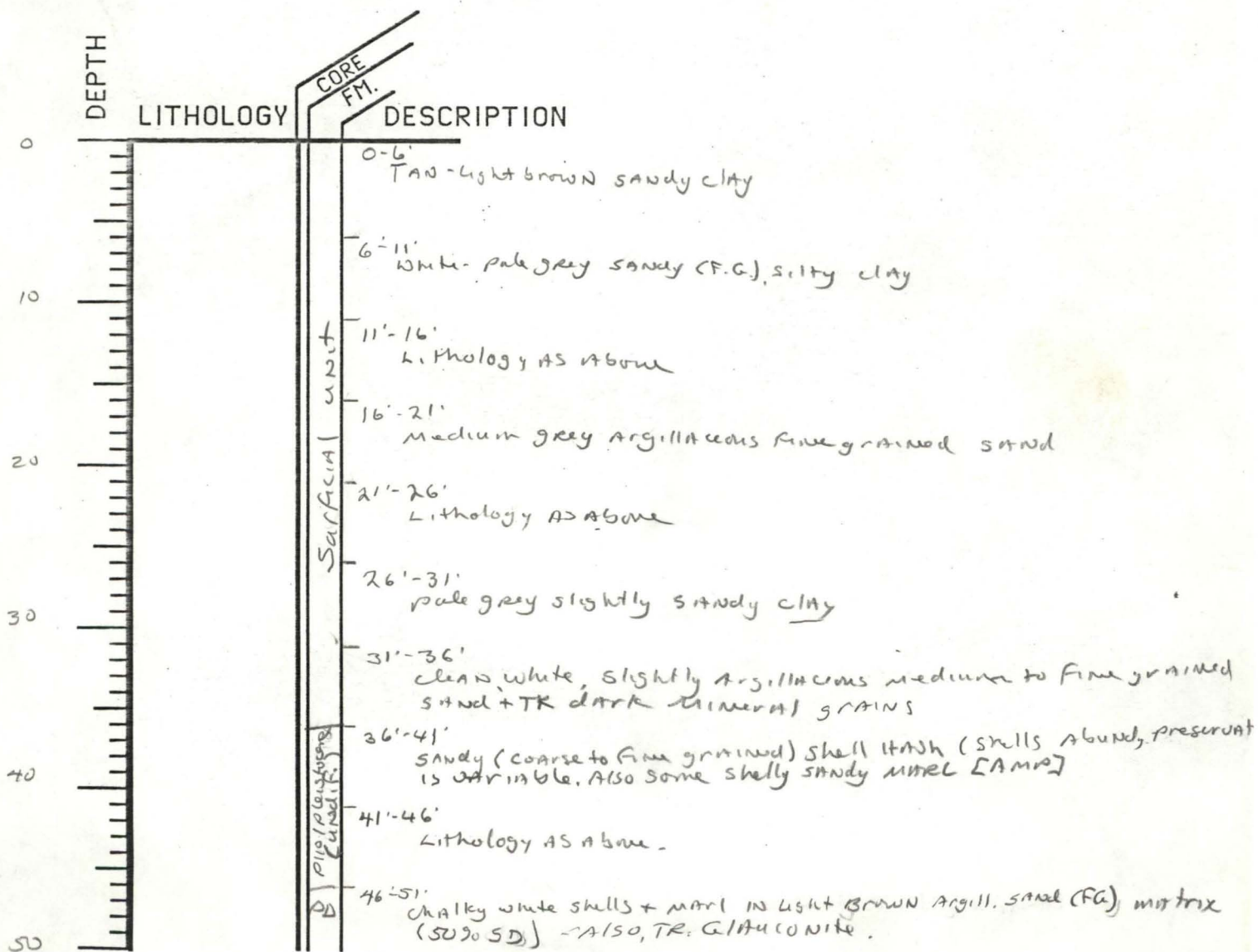
WELL CODE BW-C-1-67

ELEVATION 60'

T.D. 101'

NOTE: SAMPLES are unwashed, in  
bags, presumably from core  
INTERVALS.  
also - 2 samples <sup>IN BOX</sup> were split, washed +  
floats, but float slides could not  
be located.

NO LOGS



51-56'  
Lithology as above ± 80-90% Argillaceous BW-C-1-67  
SAND

56'-6' light brown argillaceous fine grained sand + 1% Glauconite  
+ TR. SCL

Remainder of well scanned to 101' - lithology  
is uniform + consistent. - shells in sand below  
46' may be continuation from split spoon coring  
with marl above + wet sands below. - this  
is hypothetical - we have no data on  
how samples were obtained.

50

60

70

80

90

100

