

BF-C-4-68

Map Location No. P-19, L-12  
NCDAWR # P-19, L-1  
NCPC # 185  
TGS # \_\_\_\_\_

WELL RECORD

Source of Data: N.C. Phosphate Corp  
Location: Town 1.5 mi. E. of Cox's X-Roads County Beaufort  
Topography: Flat  
Owner N.C. Phosphate Corp Address \_\_\_\_\_  
Driller Girdler Foundation Date Drilled March 68 Method Rotary  
Depth of Well 315'  
Casing: Depth 120 feet; Dia. 4 inches; Type Black Iron  
Cement: Depth Bottom of casing to surface  
Open Hole from 120 ft. to 315 ft.

Screen: From (FT.)	TO(FT.)	Slot Size	Type
_____	_____	_____	_____
_____	_____	_____	_____

Water Zone: Dep th 120' - 315 ft. Aquifer: Ech  
Static Water Level: -41.60 ft. below measuring point which is base of recorder shelf, 1.80 ft. above land surface. Date 4-1-68  
Elevation of Measuring Point 37.10 ft. above MSL  
Yield \_\_\_\_\_ gpm. Flow, pump, bail, estimated. Date \_\_\_\_\_  
Pumping water Level: \_\_\_\_\_ ft. after \_\_\_\_\_ hrs. pumping at \_\_\_\_\_ gpm  
Pump: type \_\_\_\_\_, Intake depth \_\_\_\_\_  
Quality: \_\_\_\_\_

Log: Gamma, resistivity, + self potential log attached  
REMARKS: Equipped with Stevens Type A35 recorder 3-28-68  
Hydrographs Available from N.C. Phosphate Corp.  
Core sample taken from surface to 330'

## LITHOLOGIC LOG\*

DH#: NCPC 185

Map Location: P-19, e-12 Collar Elevation: 35.30

Date Drilled: March 4, 1968

0.0'-6.0'	Not Cored
6.0'-11.5'	Lost Core
11.5'-13.0'	blue gray, silty, fine quartz sand
13.0'-33.6'	Lost Core
33.6'-35.1'	blue gray silty, fine to medium, quartz sand
35.1'-38.6'	blue gray, silty fine to medium, sand to sandy silt
38.6'-39.4'	medium to coarse, quartz sand
39.4'-45.1'	Lost Core
45.1'-51.3'	blue gray, very silty, fine, quartz sand with abundant coarse shell
51.3'-51.6'	blue gray, silty, medium, quartz sand with very abundant fine-coarse shell
51.6'-59.1'	light olive drab, silty, medium, quartz sand with abundant shell
59.1'-59.6'	Lost Core
59.6'-90.5'	light olive drab, very silty, medium, quartz sand with minor-abundant, fine-medium, phosphate and abundant coarse shell
90.5'-98.6'	olive drab, silty, medium, quartz sand with abundant coarse phosphate and shell
98.6'-104.6'	olive drab, silty, fine to medium, quartz and phosphate sand
104.6'-114.0'	Lost Core
114.0'-118.3'	light gray green, coarse, cast and mold limestone
118.3'-120.0'	Lost Core
120.0'-127.0'	as from 114.0-118.3
127.0'-131.0'	Lost Core
131.0'-138.9'	light gray green, medium to medium coarse, shell and quartz sandstone
138.9'-140.0'	Lost Core
140.0'-143.5'	as from 131.0-138.9 but with more frequent medium coarse cast and molds
143.5'-150.0'	Lost Core
150.0'-157.0'	light gray green, medium to medium coarse, sandy, shell cast and mold limestone
157.0'-163.0'	light gray green, coarse to very coarse, cast and mold limestone
163.0'-165.7'	light gray green, medium to medium coarse, sandy, shell, cast and mold limestone
165.7'-167.0'	Lost Core
167.0'-194.8'	light gray green, medium to medium coarse, cast and mold shell limestone

* 194.8'-195.0'	partially replaced, phosphatized, very coarse, cast and mold limestone
195.0'-204.8'	light gray green, very coarse, cast and mold limestone
204.8'-217.0'	Lost Core
217.0'-218.5'	light gray green, medium to coarse, shell sand
218.5'-227.0'	Lost Core
227.0'-229.0'	light gray green, very coarse, cast and mold limestone
229.0'-237.0'	Lost Core
237.0'-242.0'	light gray green, medium to coarse, cast and mold limestone with beds of medium to medium coarse, shell sand at 237.0-238.0 and 239.5-240.0
242.0'-247.0'	Lost Core
247.0'-251.0'	light gray green, very coarse, cast and mold limestone
251.0'-257.0'	Lost Core
257.0'-257.8'	light gray green, very coarse, cast and mold limestone
257.8'-259.7'	light gray green, medium to medium coarse, shell sand and shell limestone
259.7'-260.0'	dense, partially phosphatized, medium coarse, cast and mold limestone
260.0'-267.0'	Lost Core
267.0'-268.5'	light gray green, very coarse, cast and mold limestone with a few glauconite pebbles to $-\frac{1}{2}$ " + $\frac{1}{4}$ "
268.5'-269.0'	light green, clayey, fine to medium, glauconite sand
269.0'-277.0'	Lost Core
277.0'-282.0'	light gray green, medium to medium coarse, cast and mold sandstone interbedded with medium to medium coarse, glauconite shell sand; beds range in thickness from 0.1' to 0.5'; glauconite = 10-20%
282.0'-287.0'	Lost Core
287.0'-291.0'	as from 277.0-282.0, glauconite = 20-30%
291.0'-297.0'	Lost Core
297.0'-299.0'	light green, medium to medium coarse, glauconite and shell sandstone; sandstone exhibits rude shell and glauconite bedding on the order of 0.05'-0.1' thick; glauconite = 30-40%
299.0'-302.0'	Lost Core
302.0'-305.8'	as from 297.0-299.0
* 305.8'-306.0'	gray green dense, fine grained glauconite and shell sandstone with 1/8" to 1/4" quartz and glauconite pebbles
306.0'-310.0'	Lost Core
310.0'-310.5'	gray green, dense, fine-medium, glauconite-shell, sandstone, minor cast and molds, 5-10% 1/8" to 1/4" quartz and glauconite pebbles (N.B. this may be a portion of the previous run)
310.5'-330.0'	Lost Core

\*field examination only  
end hole at 33.0'  
casting set at 119.5'

BF-C-4-68

NORTH CAROLINA PHOSPHATE CORPORATION

OBSERVATION WELL

LOCATION - P-19, t-12

North Carolina Phosphate Corporation Well No. 185

Drilled by: Girdler Foundation, March, 1968

Logged by: North Carolina Department of Air and Water Resources

Elevation Measuring Point at base of recorder +37.10

Ground Elevation +35.30

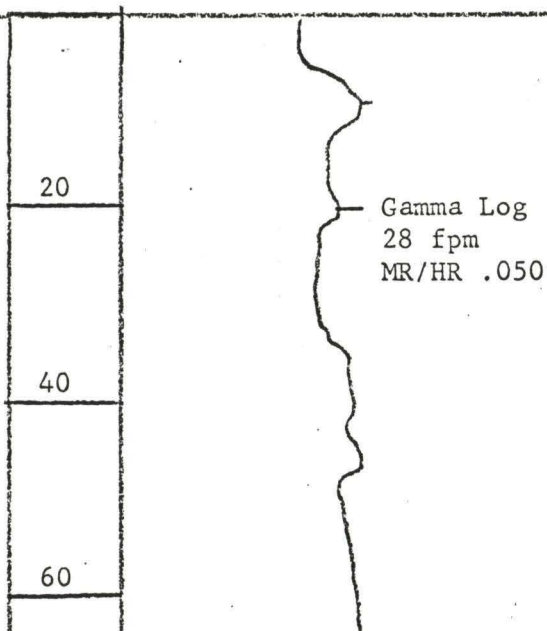
Casing: 4" to 120'

Open Hole: 120' to 316'

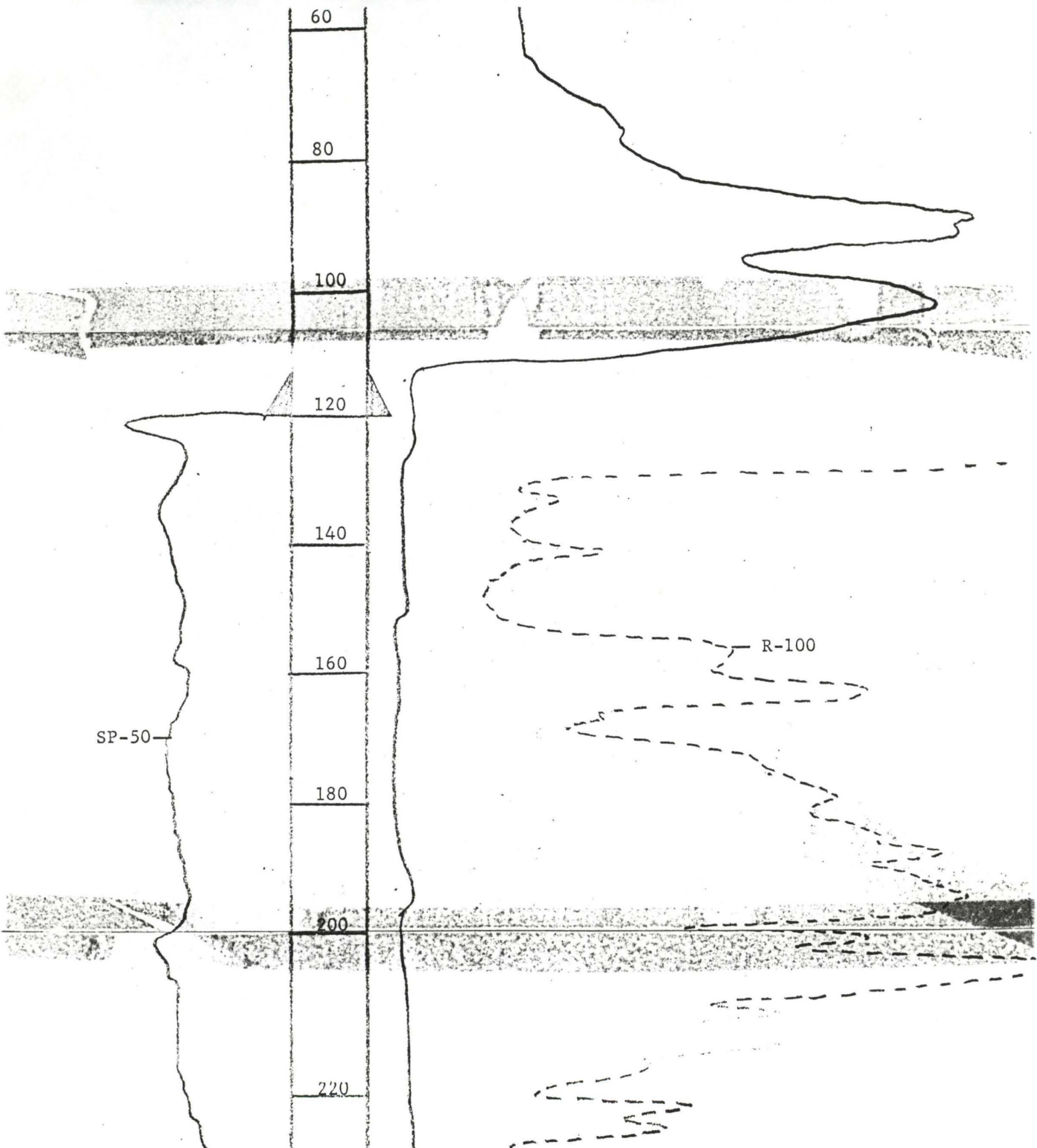
Total Depth: 316'

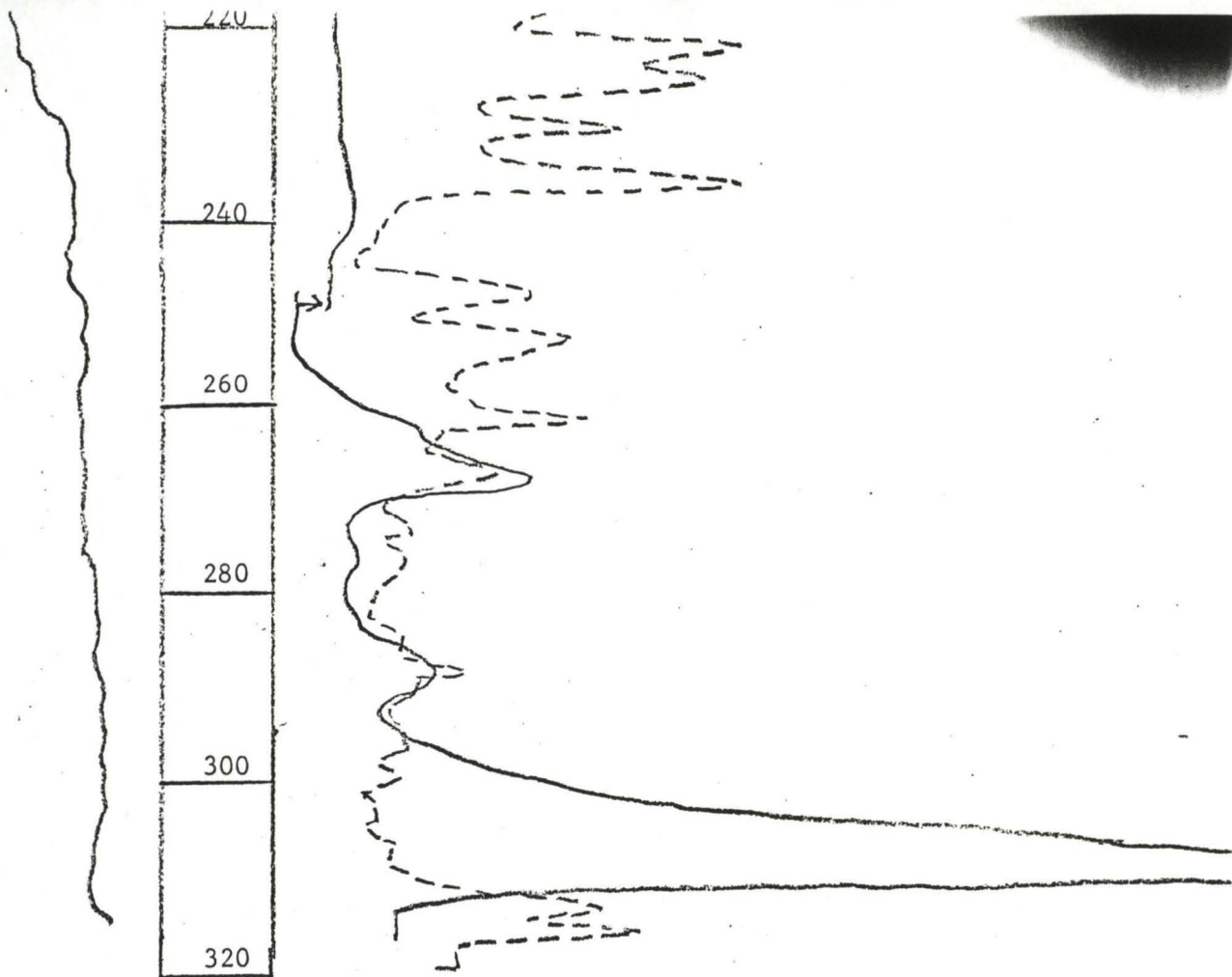
Casing cemented to surface

Land Surface









Date: 4-4-68  
By: NWW